



STRUCTURAL BIOLOGY  
COMMUNICATIONS

**Volume 70 (2014)**

**Supporting information for article:**

**Structure of a Bacterial Microcompartment Shell Protein Bound to a Cobalamin Cofactor**

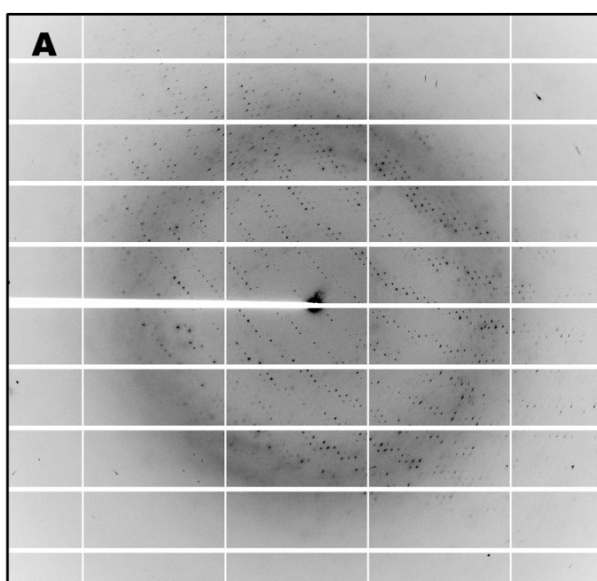
**Michael C. Thompson, Christopher S. Crowley, Jeffrey Kopstein, Thomas A. Bobik and Todd O. Yeates**

## Supplemental Information for

# X-ray Crystal Structure of a Bacterial Microcompartment Shell Protein Bound to a Cobalamin Cofactor

by

Michael C. Thompson, Christopher S. Crowley, Jeffrey Kopstein, Thomas A. Bobik, and Todd O. Yeates



**Figure S1.** Hexagonal crystals obtained by co-crystallization of cpEutL and hydroxocobalamin displayed diffraction pathologies that impeded structure determination. Two oscillation images ( $1^\circ$ ) are shown (A,B), which were collected from a single crystal. The image in panel A is related to the image in panel B by a  $90^\circ$  rotation of the crystal specimen.

