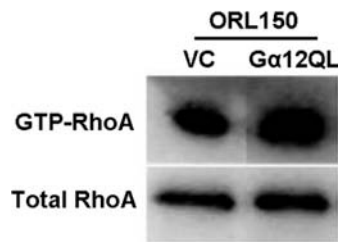
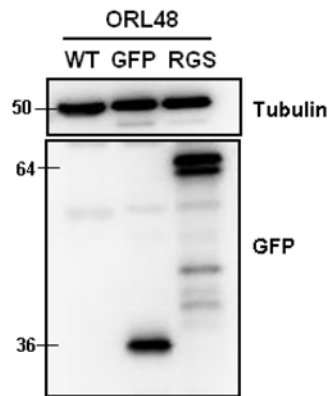


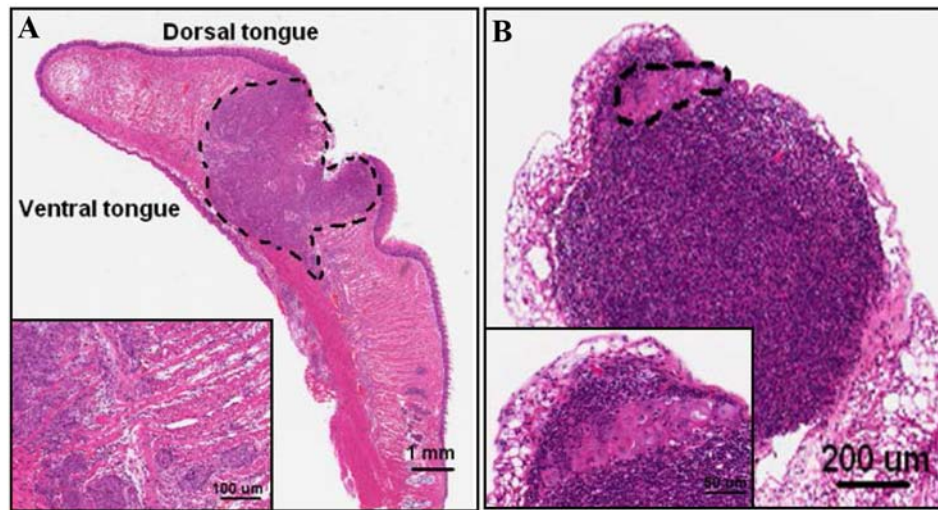
**SUPPLEMENTARY FIGURES**



**Supplementary Figure S1: Expression of Gα12QL in ORL150 induces RhoA activation.**



**Supplementary Figure S2: Expression of GFP and the GFP-RGS domain of PDZ-RhoGEF in ORL48 was determined using anti-GFP antibody.** The presence of band at the size of 75kDa indicates the expression of GFP-RGS domain of PDZ-RhoGEF, whereas the control vector only shows expression of GFP at 35kDa.



**Supplementary Figure S3: Histology evaluation of ORL48 orthotopic tongue xenograft.** (A) H&E section showing the growth of the primary tumor on the tongue. Inset is the higher magnification of the tumoral area showing ORL48 cells formed moderately differentiated tumor with intramuscular invasion. (B) H&E section of the cervical LN indicated the presence of OSCC metastasis. Inset showed the higher magnification of the metastatic LN area.