

Supplementary Fig.S1

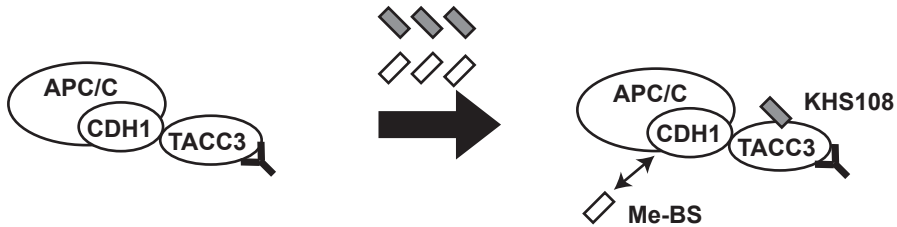
Immunoprecipitation with anti-Flag(TACC3)

Addition of KHS108 or Me-BS

A

Inherent interaction

excess amount of KHS108 or Me-BS

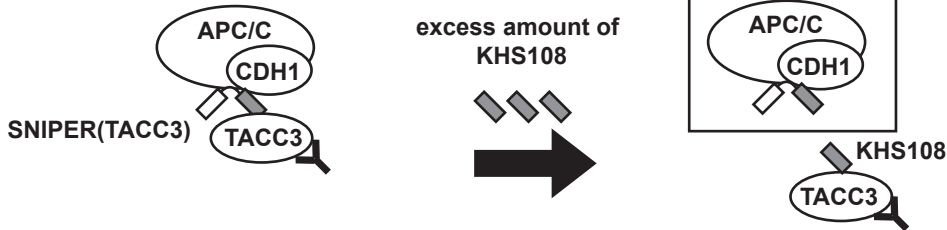


No effect

B

SNIPER(TACC3)-mediated interaction

excess amount of KHS108



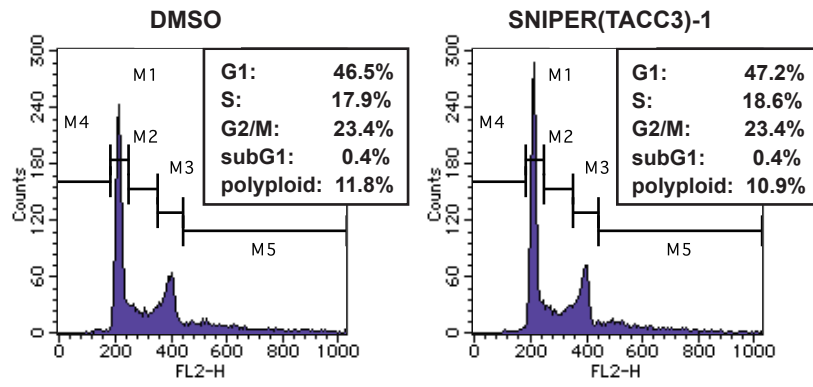
APC/C^{CDH1} eluted

excess amount of Me-BS

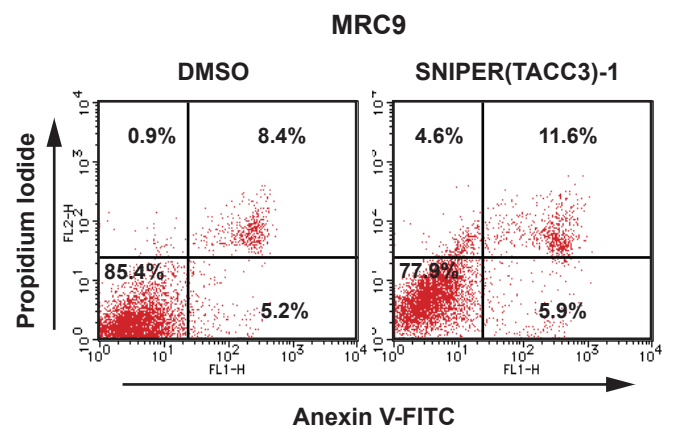
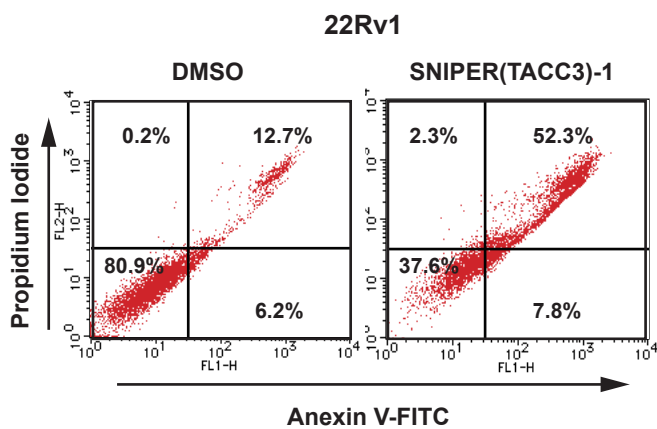
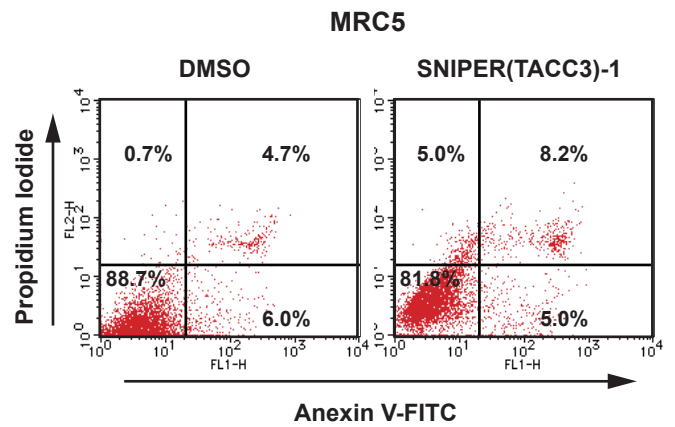
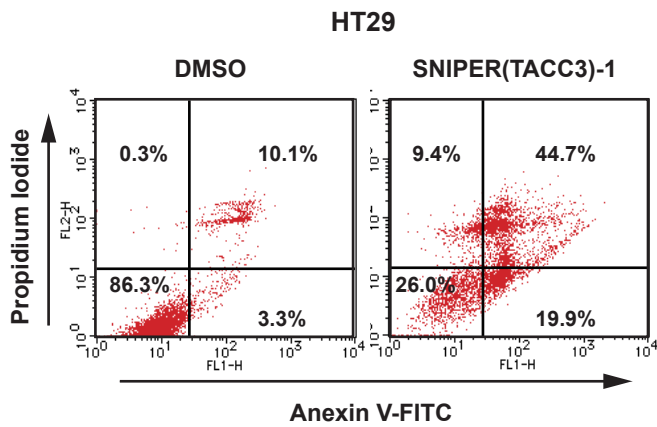
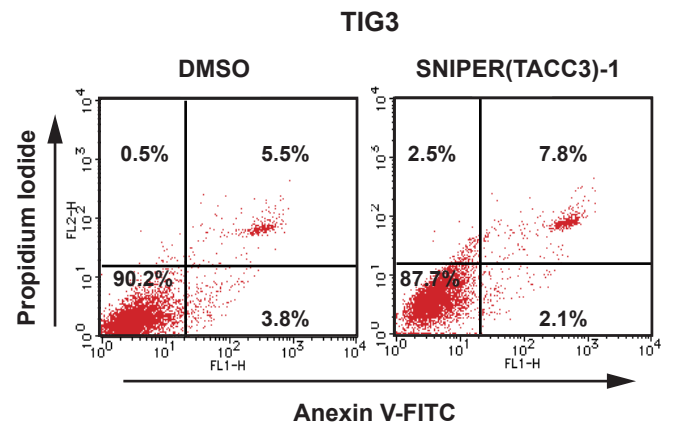
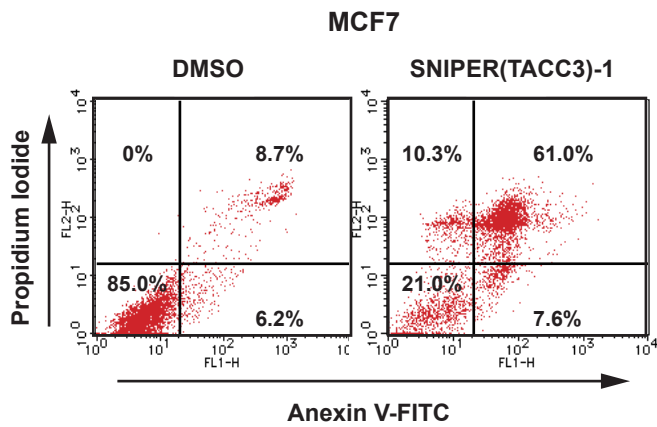
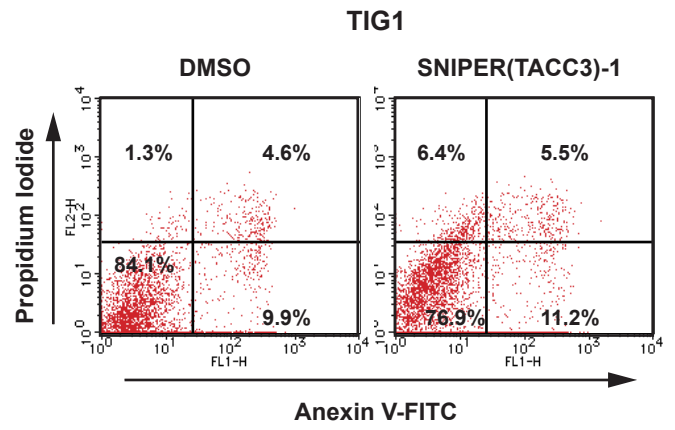
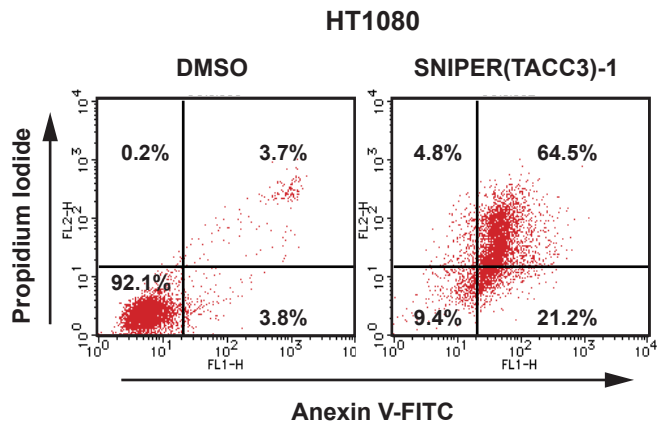


APC/C^{CDH1} eluted

Supplementary Fig.S2



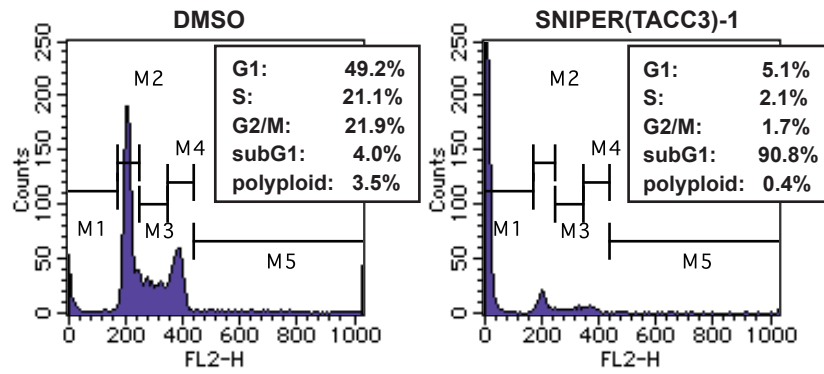
Supplementary Fig.S3



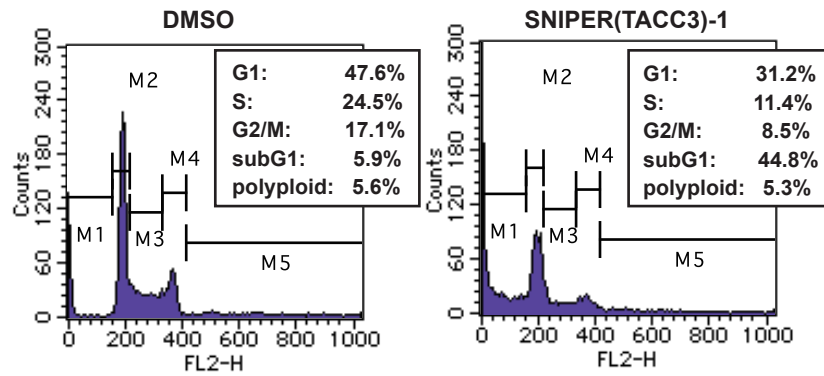
Supplementary Fig.S4

A

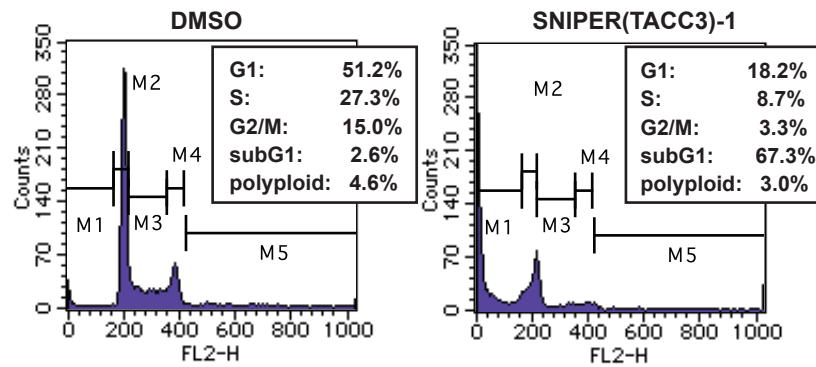
HT1080



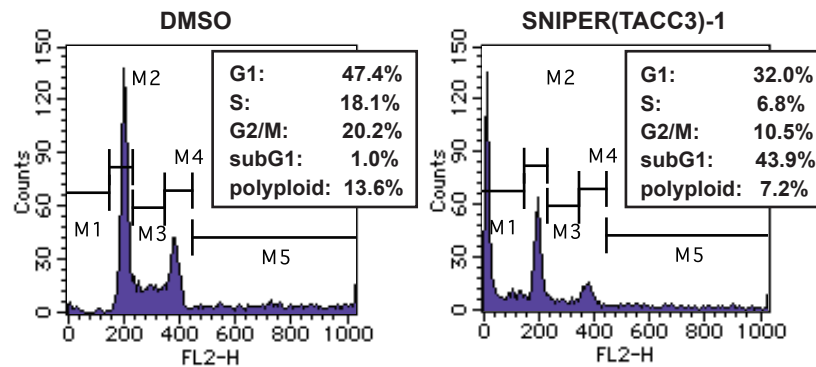
MCF7



HT29



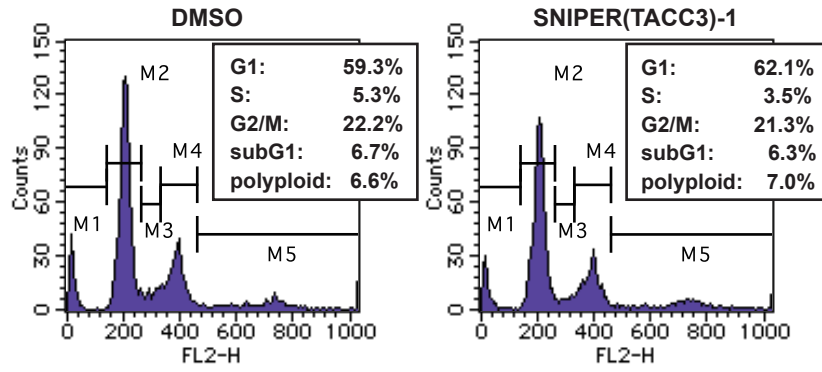
22Rv1



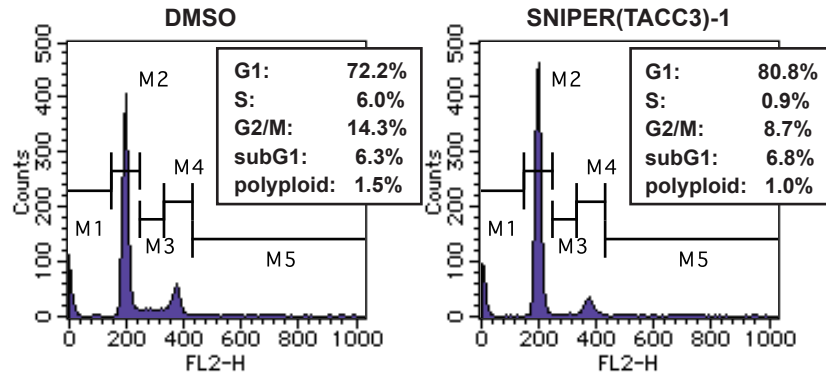
Supplementary Fig.S4

B

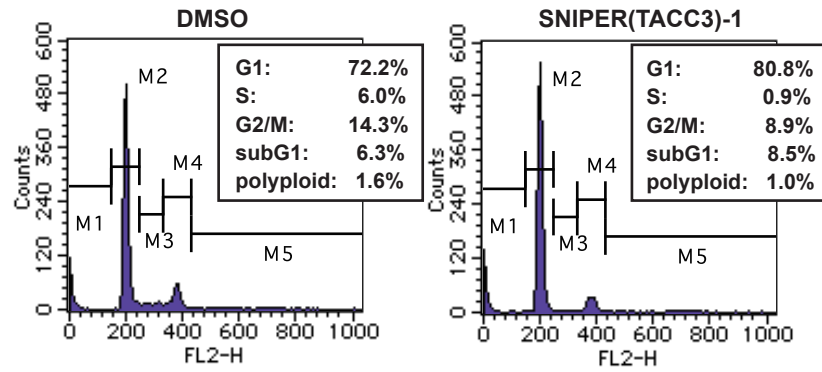
TIG1



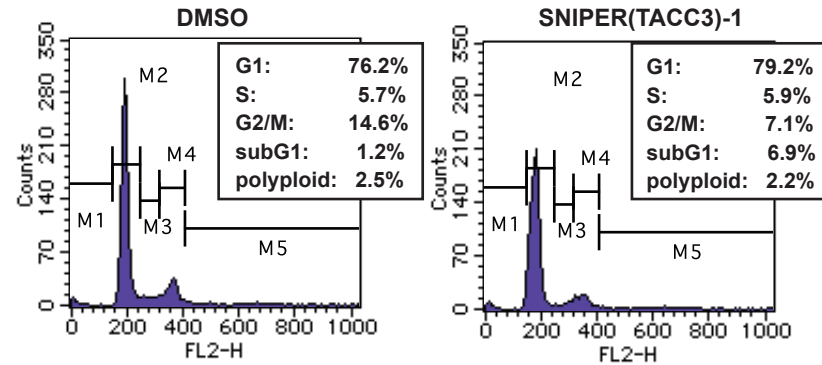
TIG3



MRC5

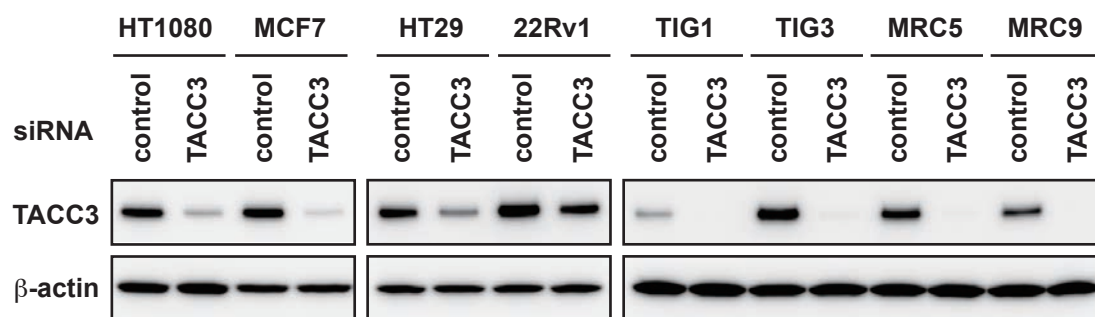


MRC9

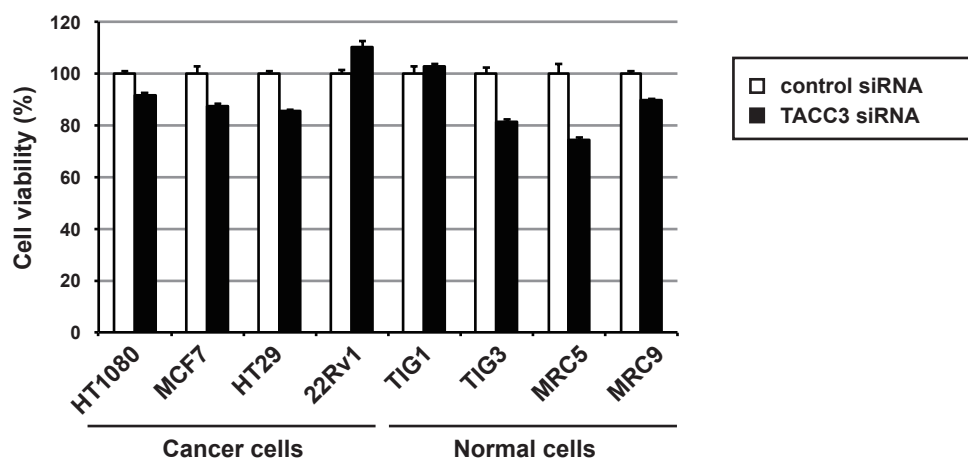


Supplementary Fig.S5

A



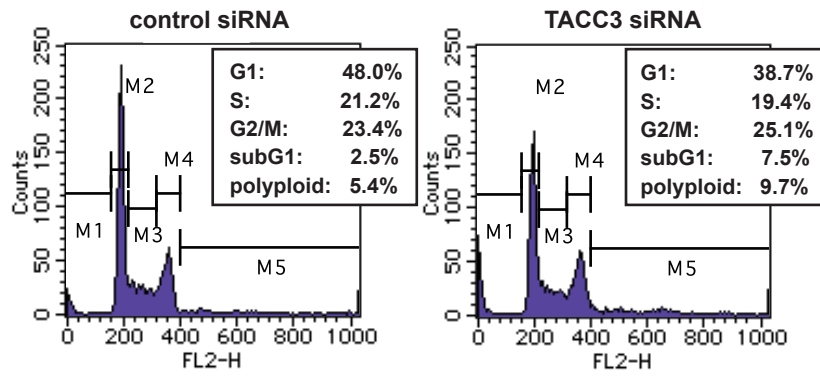
B



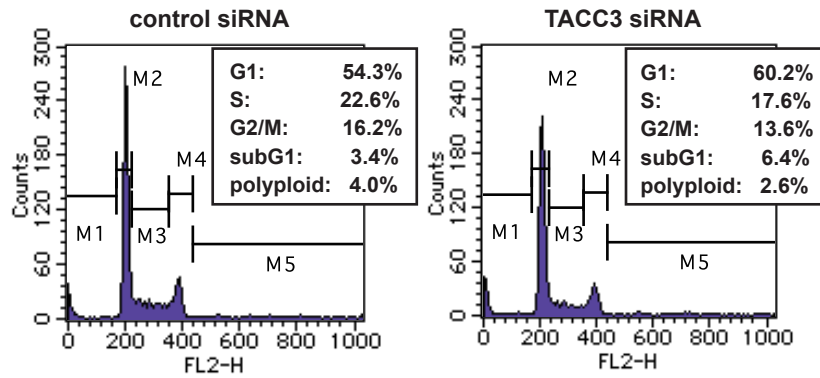
Supplementary Fig.S5

C

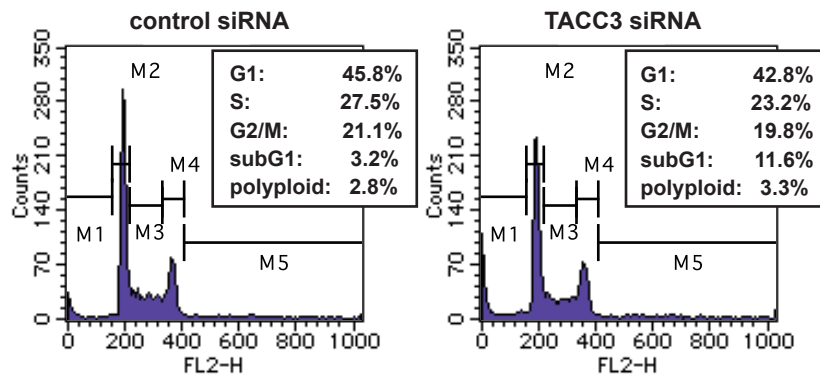
HT1080



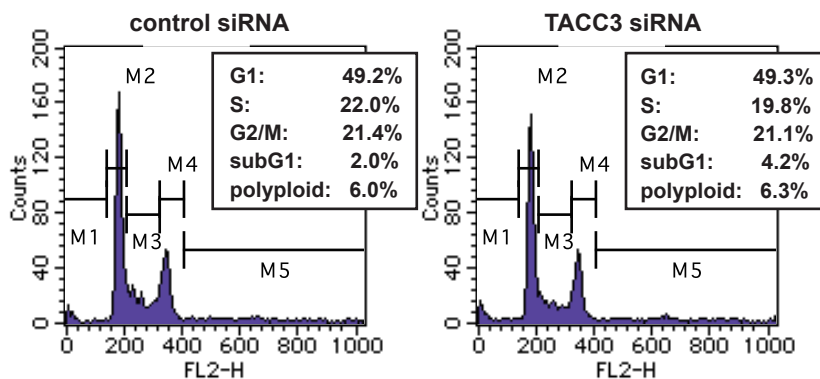
MCF7



HT29



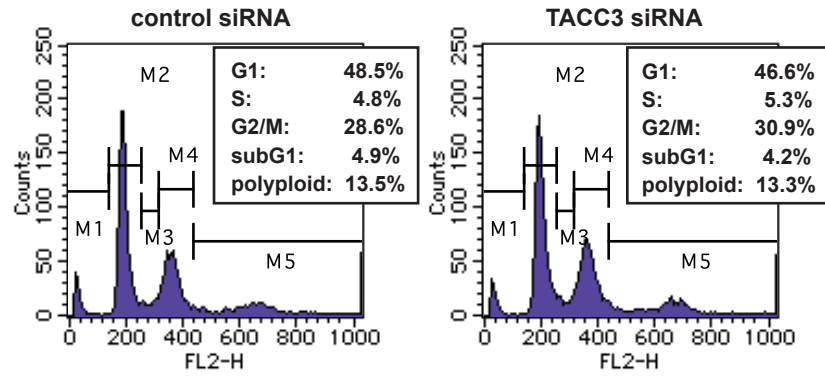
22Rv1



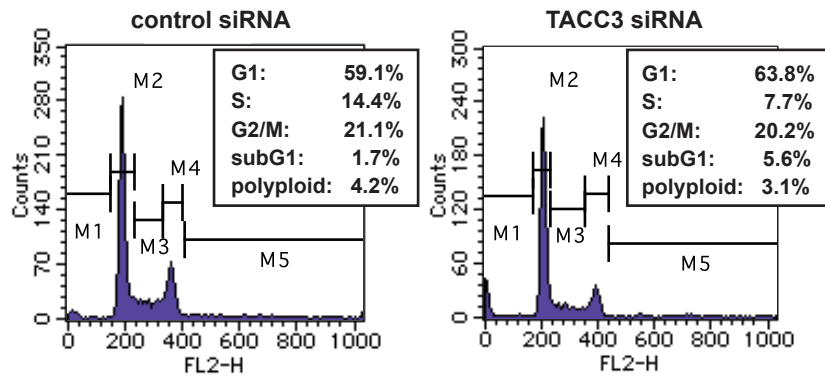
Supplementary Fig.S5

D

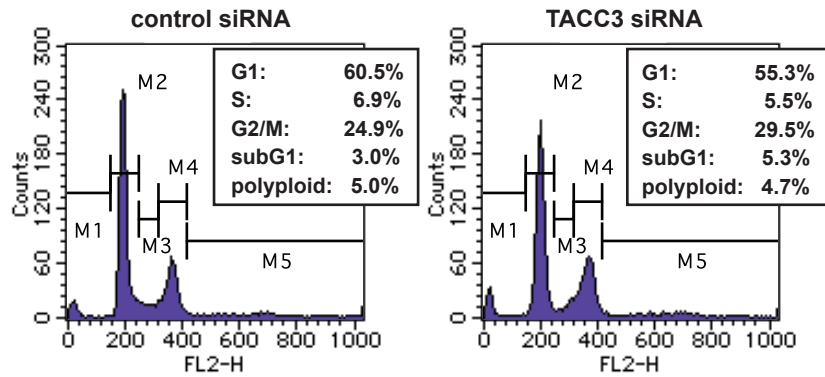
TIG1



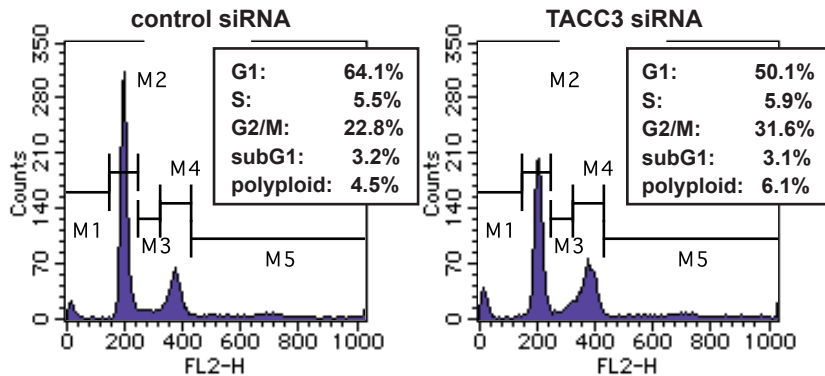
TIG3



MRC5

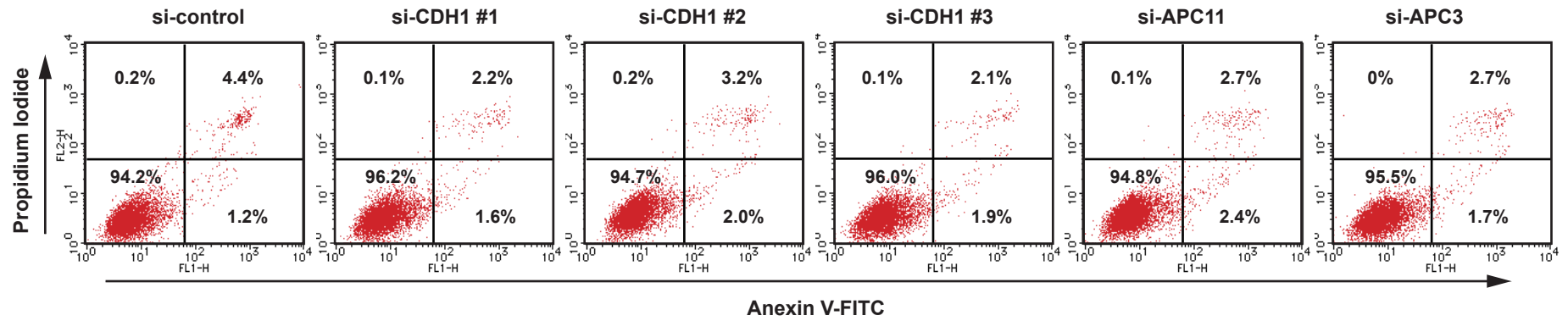


MRC9



Supplementary Fig.S6

DMSO



SNIPER(TACC3)-1

