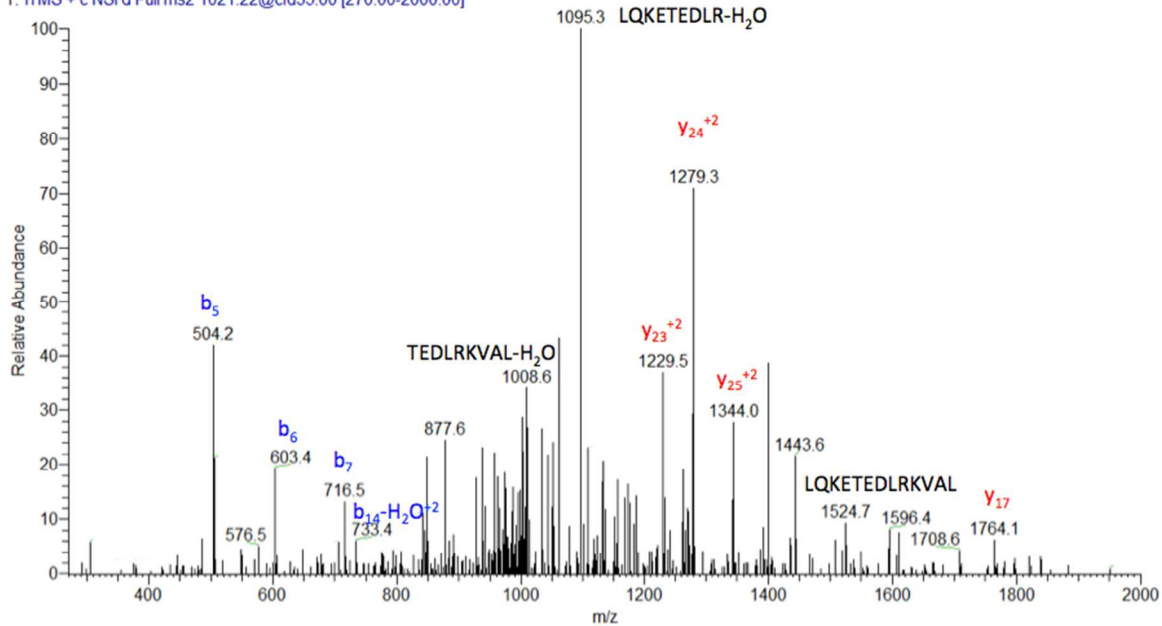


Supplemental Figure 1: Annotated MS/MS spectra for all single peptide identifications of proteins. B-type (blue) and y-type ions (red) are labeled to the corresponding peaks in the tandem mass spectra shown.

- a. Q5SWU9 Acetyl-CoA carboxylase 1 FDR 4.230E-2  
Peptide LQQENEQLQKETEDLRKVALEAQQK(GG)

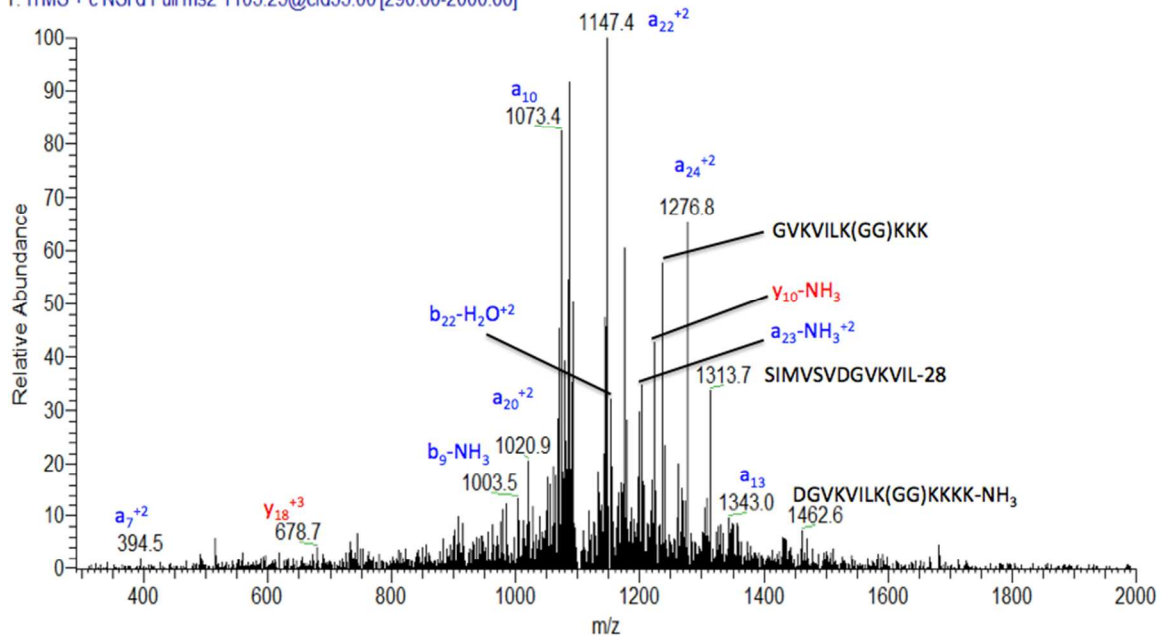
021414\_Ub\_E\_GG\_W\_Exosome #4100 RT: 85.79 AV: 1 NL: 2.25E2  
T: ITMS + c NSI d Full ms2 1021.22@cid35.00 [270.00-2000.00]



- b. E0CYH9 Carboxyl-terminal PDZ ligand of neuronal nitric oxide synthase protein  
FDR 2.370E-4

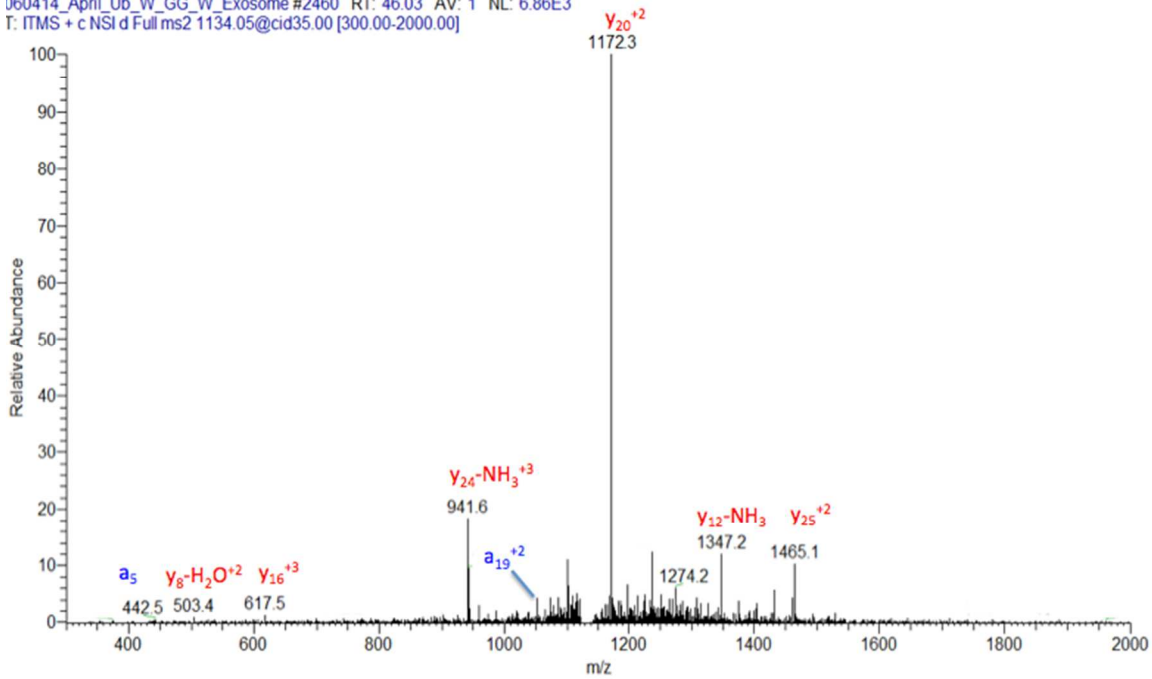
Peptide KKKVSIMVSDGVKVLK(GG)KKKKLLLLQK

021414\_Ub\_E\_GG\_E\_Exosome #3363 RT: 65.22 AV: 1 NL: 9.23E2  
T: ITMS + c NSI d Full ms2 1105.23@cid35.00 [290.00-2000.00]



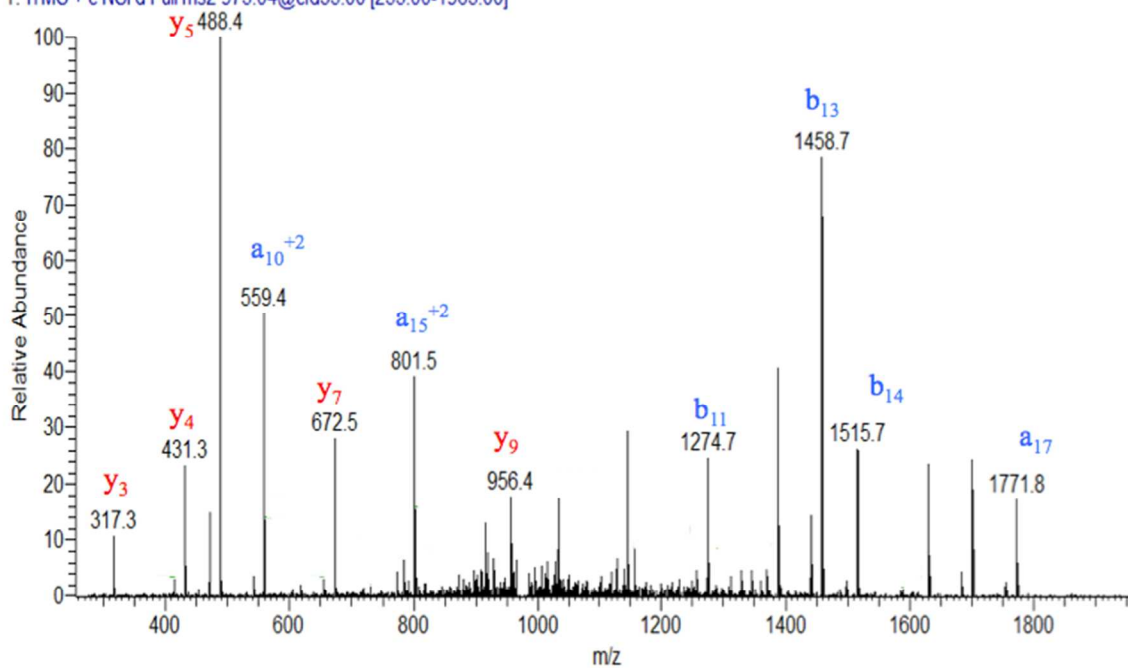
c. Q6P925 Cysteine-rich perinuclear theca 4 FDR 5.100E-2  
Peptide AK(GG)RSKLLKKRNPRSKLPK(GG)RSRHSLIR

060414\_April\_Ub\_W\_GG\_W\_Exosome #2460 RT: 46.03 AV: 1 NL: 6.86E3  
T: ITMS + c NSI d Full ms2 1134.05@cid35.00 [300.00-2000.00]



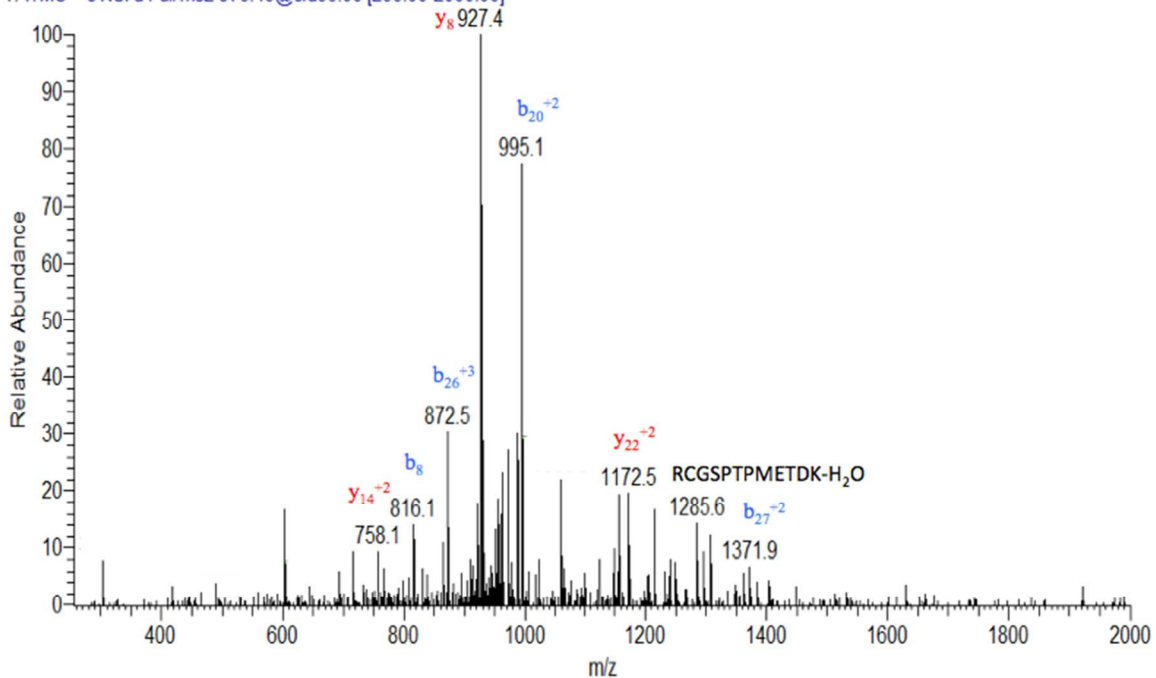
d. P15975 Inactive ubiquitin carboxyl-terminal hydrolase 53 FDR 4.484E-2  
Peptide MAWVK(GG)FLRKPSGNLGK

032514\_Ub\_E\_GG\_FT\_Exosome #3933 RT: 71.13 AV: 1 NL: 7.05E3  
T: ITMS + c NSI d Full ms2 975.04@cid35.00 [255.00-1965.00]



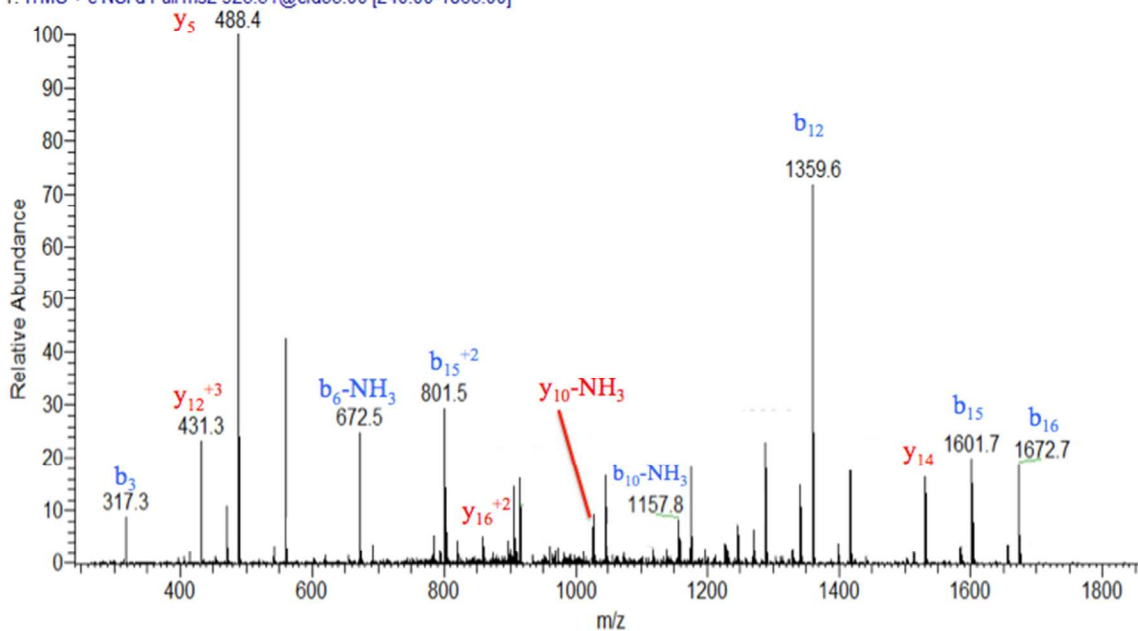
e. B2RXC2 Inositol 1,4,5-trisphosphate 3-kinase B FDR 2.15E-2  
Peptide GTPASPRCGSPTPMETDK(GG)RVAPSLER

012614\_Exo\_Ub3933\_E\_GG\_E\_7\_3#1928 RT: 50.35 AV: 1 NL: 4.76E2  
T: ITMS + c NSI d Full ms2 973.45@cid35.00 [255.00-2000.00]



f. Q924L1 LETM1 domain-containing protein 1 FDR 8.52E-2  
Peptide MKGIQMLWADGKK(GG)AR

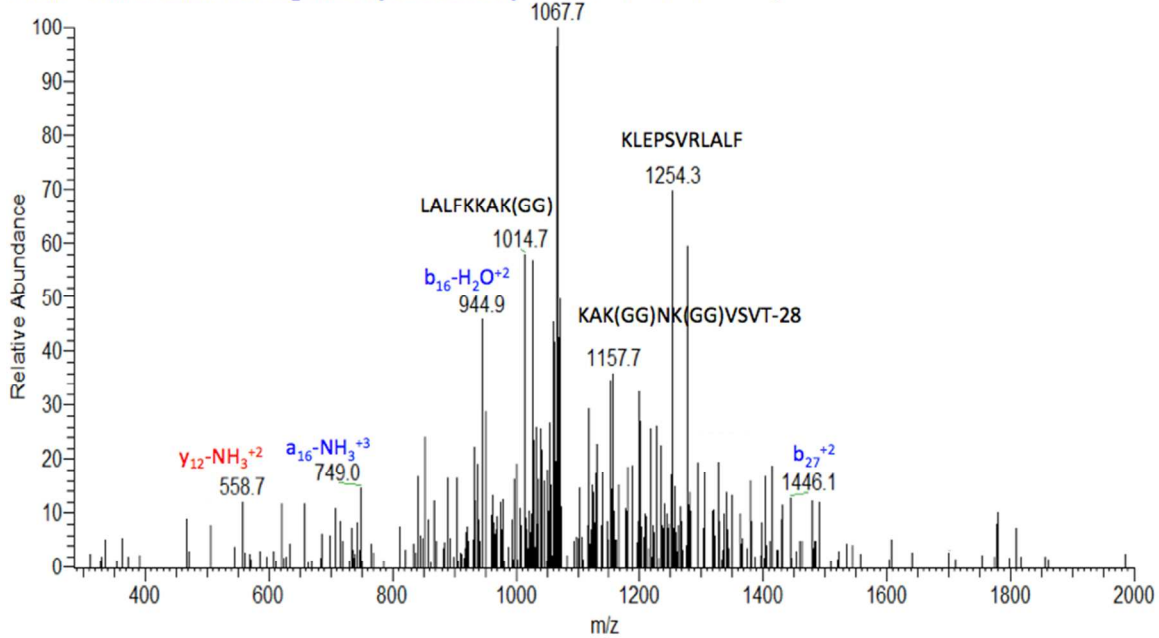
032514\_Ub\_W\_GG\_W\_Exosome #3486 RT: 62.81 AV: 1 NL: 2.74E4  
T: ITMS + c NSI d Full ms2 925.51@cid35.00 [240.00-1865.00]



g. Q0P5X1 Leucine-rich repeat and IQ domain-containing protein 1 FDR 5.09E-2  
Peptide KLRKKLEPSVRLALFKKAK(GG)NK(GG)VSVTK

021414\_Ub\_W\_GG\_FT\_Exosome #867 RT: 26.72 AV: 1 NL: 1.08E2

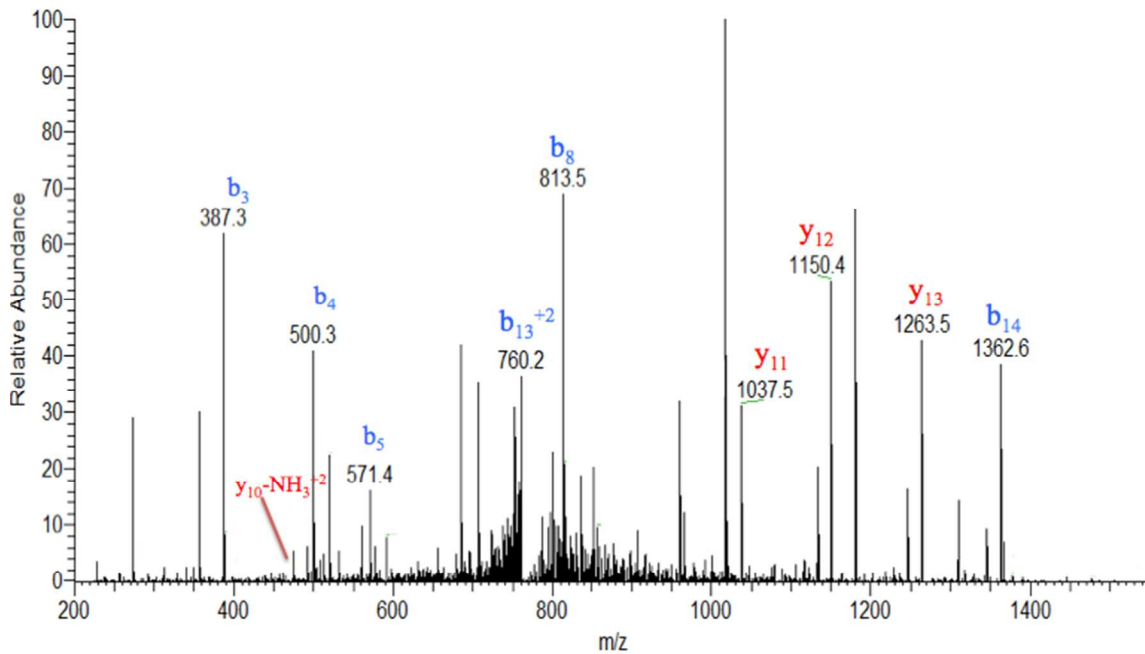
T: ITMS + c NSI d Full ms2 1081.36@cid35.00 [285.00-2000.00] KAK(GG)NK(GG)VSV-NH<sub>3</sub>



j. P51960 Myb-related protein A FDR 8.52E-3  
Peptide WSLIAK(GG)HLK(GG)GR

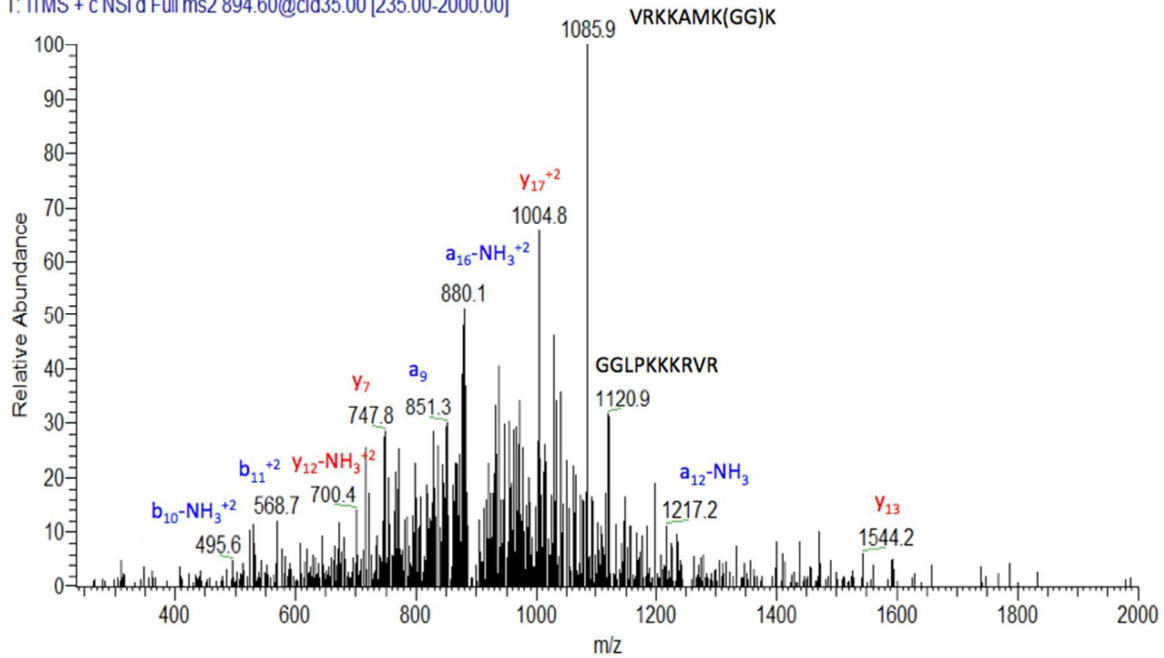
121414\_Ub\_W\_GG\_FT\_Exosome #1470 RT: 37.58 AV: 1 NL: 2.46E3

T: ITMS + c NSI d Full ms2 768.92@cid35.00 [200.00-1550.00]



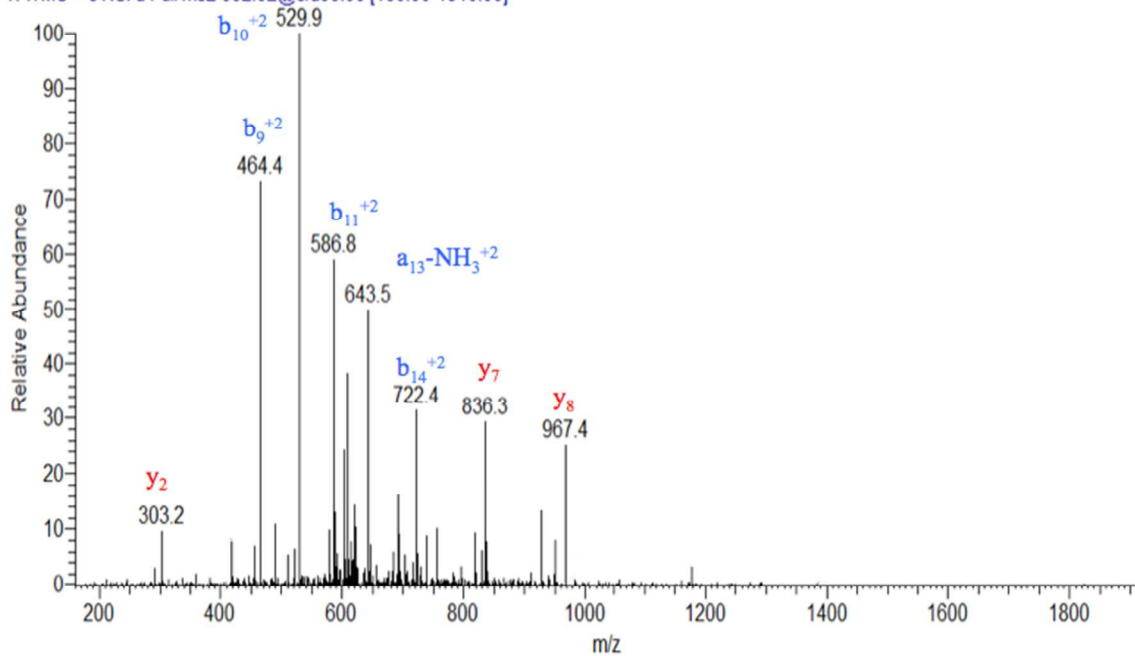
k. H3BKN5 Probable global transcription activator SNF2L2 FDR 9.13E-3  
Peptide VLGRK(GG)LPKKRVRKKAMK(GG)KR

060414\_April\_Ub\_E\_GG\_W\_Exosome\_140608233604#2038 RT: 39.65 AV: 1 NL: 4.11E2  
T: ITMS + c NSI d Full ms2 894.60@cid35.00 [235.00-2000.00]



n. J3QQ16 Protein Col6a3 FDR 3.625E-2  
Peptide DLK(GG)IMVLMLTGDMQR

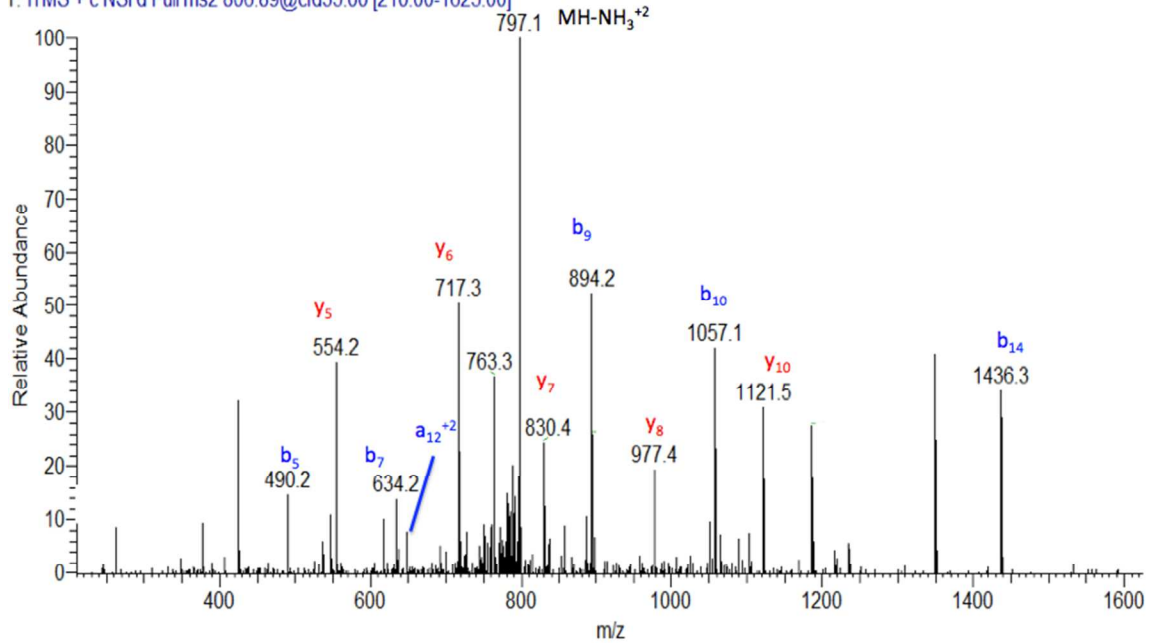
021414\_Ub\_E\_GG\_W\_Exosome#1821 RT: 41.33 AV: 1 NL: 5.29E3  
T: ITMS + c NSI d Full ms2 632.32@cid35.00 [160.00-1910.00]



o. A2AU83 Protein GM14124 FDR 2.149E-2  
Peptide AFSSPSGFLYHK(GG)R

021414\_Ub\_E\_GG\_W\_Exosome#2894 RT: 60.68 AV: 1 NL: 6.91E2

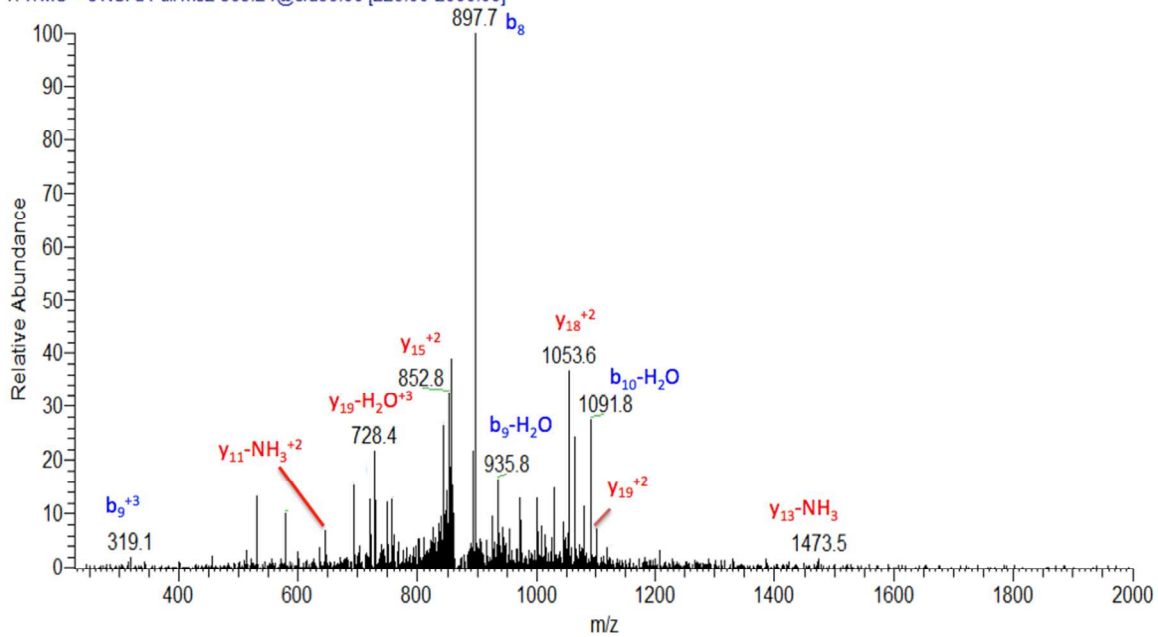
T: ITMS + c NSI d Full ms2 806.89@cid35.00 [210.00-1625.00]



p. E9PZM7 Protein Scaf11 FDR 5.09E-2  
Peptide RK(GG)SVRRGRK(GG)PPLLKKKLRR

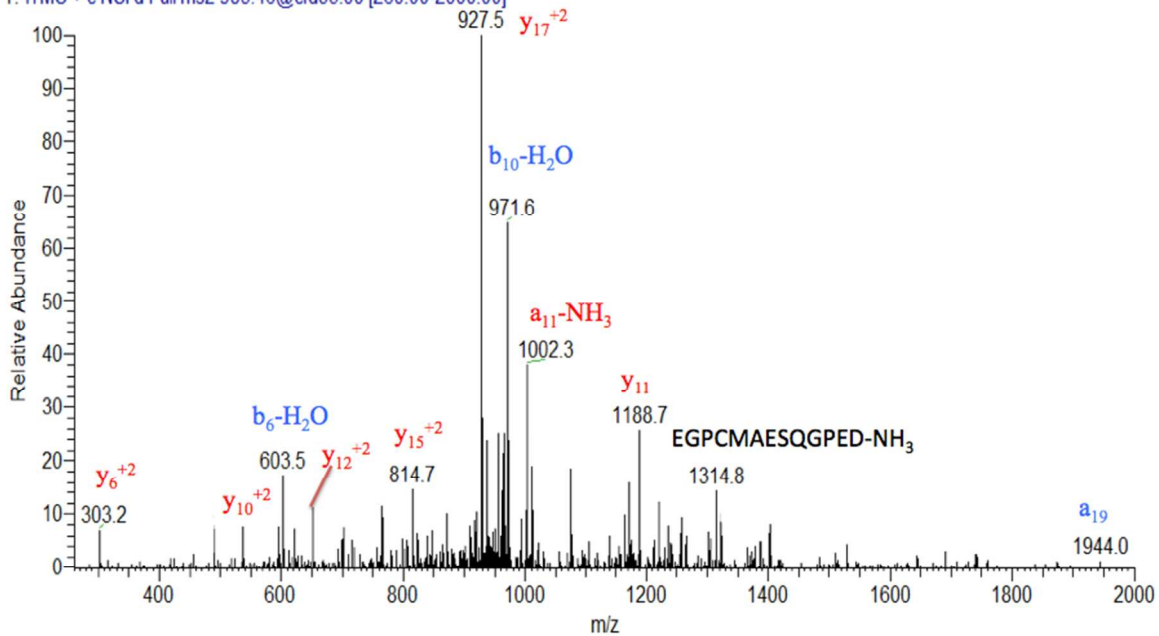
021414\_Ub\_W\_GG\_W\_Exosome#1629 RT: 38.55 AV: 1 NL: 1.67E3

T: ITMS + c NSI d Full ms2 869.24@cid35.00 [225.00-2000.00]



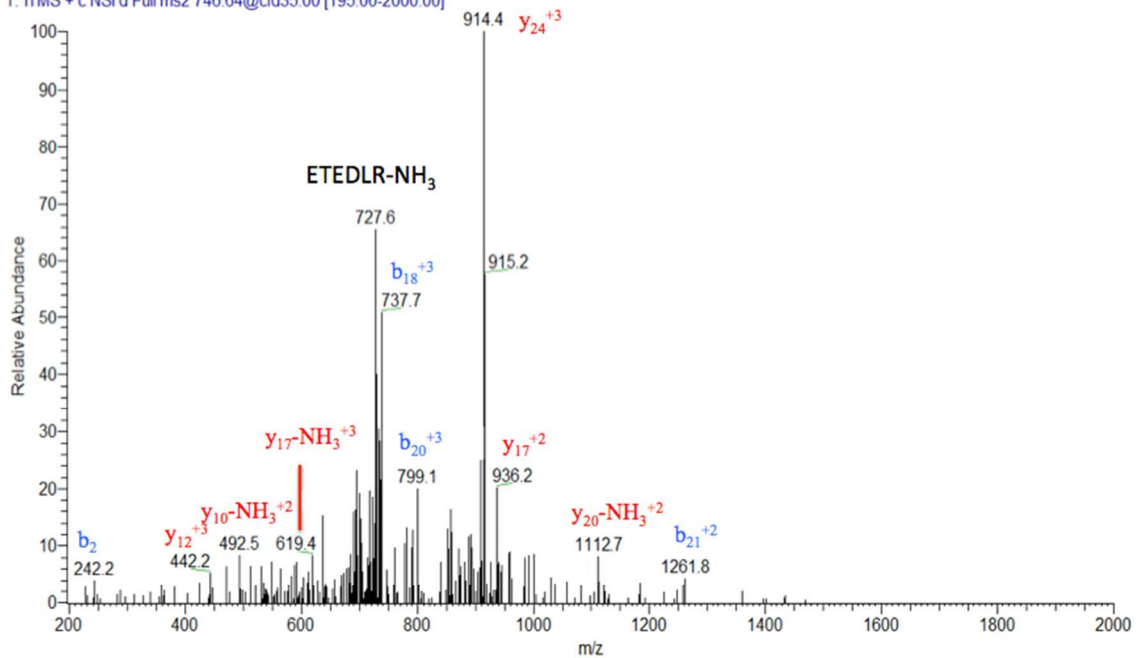
q. G3UWJ2 Protein Zfp69 FDR 2.932E-2  
Peptide GEGPCMAESQGPEDPILDVKNKLETK(GG)

021414\_Ub\_W\_GG\_E\_Exosome\_140217000458 #1575 RT: 39.40 AV: 1 NL: 5.02E2  
T: ITMS + c NSI d Full ms2 983.46@cid35.00 [260.00-2000.00]



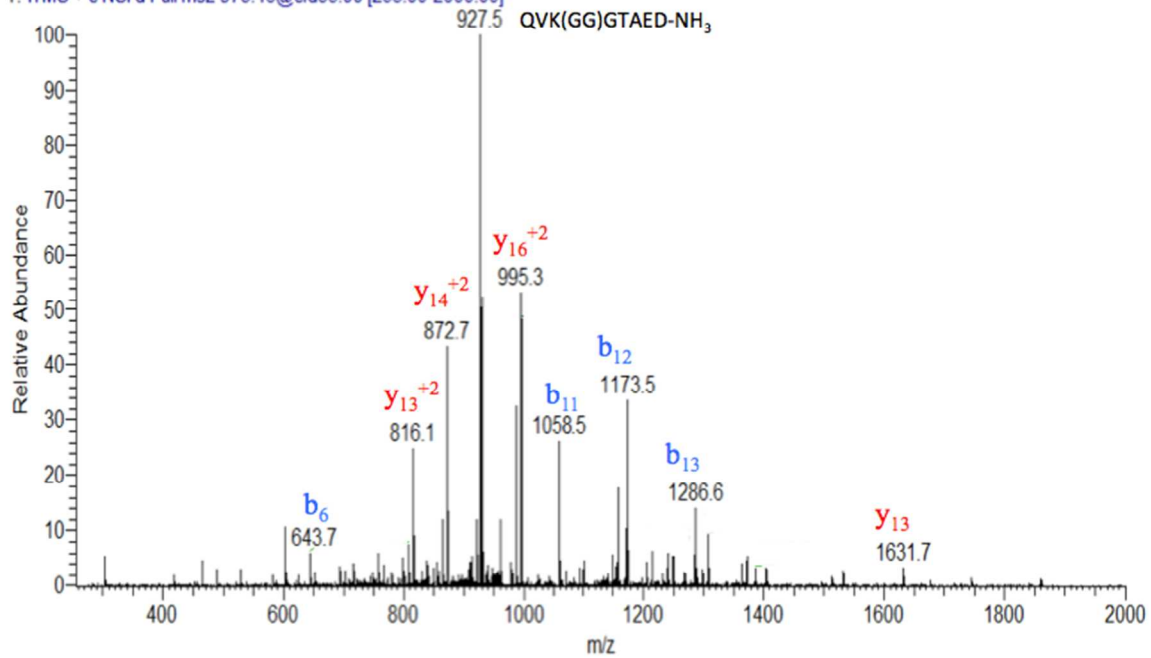
r. G5E861 Sodium channel and clathrin linker 1 FDR 3.768E-2  
Peptide LQQENEQLQKETEDLRKVALEAQK(GG)

021414\_Ub\_E\_GG\_FT\_Exosome\_140217031056 #726 RT: 25.80 AV: 1 NL: 1.95E2  
T: ITMS + c NSI d Full ms2 746.64@cid35.00 [195.00-2000.00]



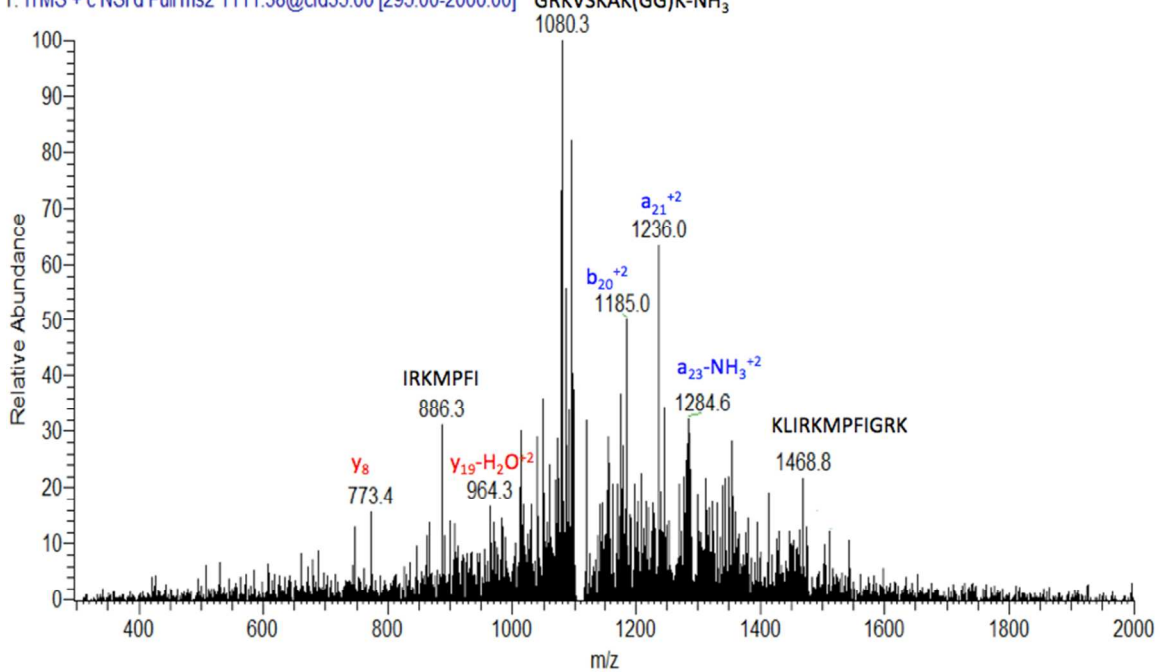
s. Q6PHS6 Sorting nexin-13 FDR 5.28E-3  
Peptide DDQVK(GG)GTAEDLVETFFEVEMEKEK

021414\_Ub\_W\_GG\_W\_Exosome\_140216205906 #1714 RT: 39.61 AV: 1 NL: 5.96E3  
T: ITMS + c NSI d Full ms2 973.46@cid35.00 [255.00-2000.00]



t. D3Z1Z3 Sphingosine-1-phosphate lyase 1 FDR 5.09E-2  
Peptide KKLFLIRKMPFIRKVKAK(GG)KDLVK(GG)

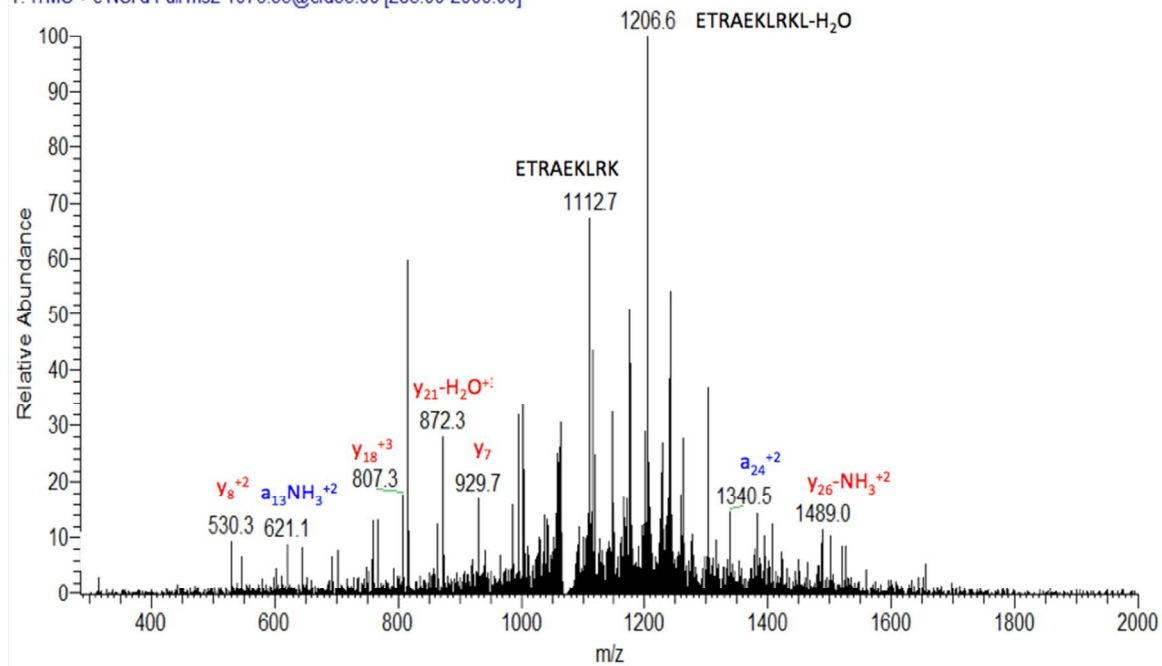
032514\_Ub\_W\_GG\_E2\_Exosome\_2 #2341 RT: 46.26 AV: 1 NL: 2.15E3  
T: ITMS + c NSI d Full ms2 1111.38@cid35.00 [295.00-2000.00]





x. Q9CSP9 Tetratricopeptide repeat protein 14 FDR 5.09E-2  
Peptide TK(GG)K(GG)IETRAEKLRLKLLKEEKRLKKK

021414\_Ub\_E\_GG\_FT\_Exosome\_140217031056#1858 RT: 46.75 AV: 1 NL: 2.27E3  
T: ITMS + c NSI d Full ms2 1076.35@cid35.00 [285.00-2000.00]



z. Q6ZPJ3 Ubiquitin-conjugating enzyme E2 O FDR 5.09E-2  
Peptide KKSIPLSIKNLK(GG)RK(GG)HKRKKKNKVTR

060414\_April\_Ub\_W\_GG\_FT\_Exosome #2158 RT: 43.44 AV: 1 NL: 1.66E3  
T: ITMS + c NSI d Full ms2 1054.01@cid35.00 [280.00-2000.00]

