

Supplementary Material

Proprotein convertase *FURIN* constrains Th2 differentiation and is critical for host resistance against *Toxoplasma gondii*

Anna Oksanen, Saara Aittomäki, Dragana Jankovic, Zsuzsanna Ortutay, Kati Pulkkinen, Sanna Hämäläinen, Anne Rokka, Garry L. Corthals, Wendy T. Watford, Ilkka Junttila, John J. O'Shea, and Marko Pesu

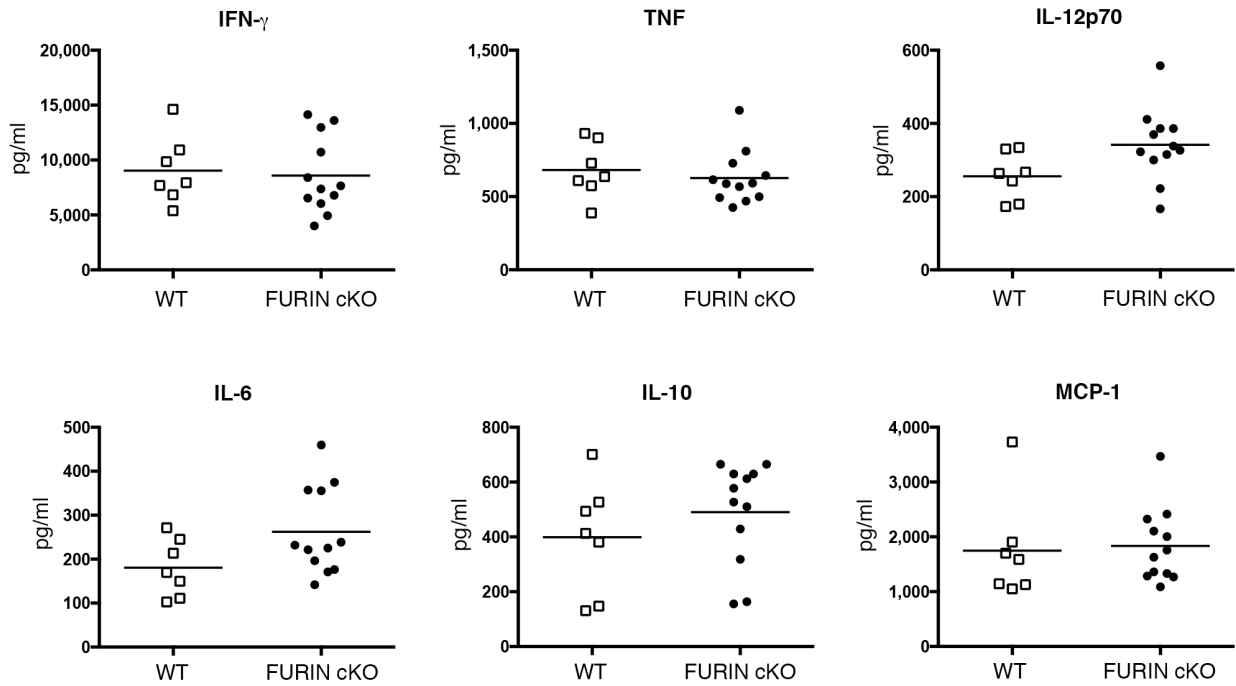


Figure S1. Serum cytokine levels in *T. gondii* infected CD4cre-fur^{f/f} and littermate animals. CD4cre-fur^{f/f} (n=12) and littermate control (n=7) mice were inoculated i.p. with 20 pepsin-treated ME-49 cysts. Serum cytokines were measured 9 days post infection with CBA inflammation kit (BD). Statistically significant differences between the groups could not be detected with Mann-Whitney test. Data is pooled from two identical experiments.

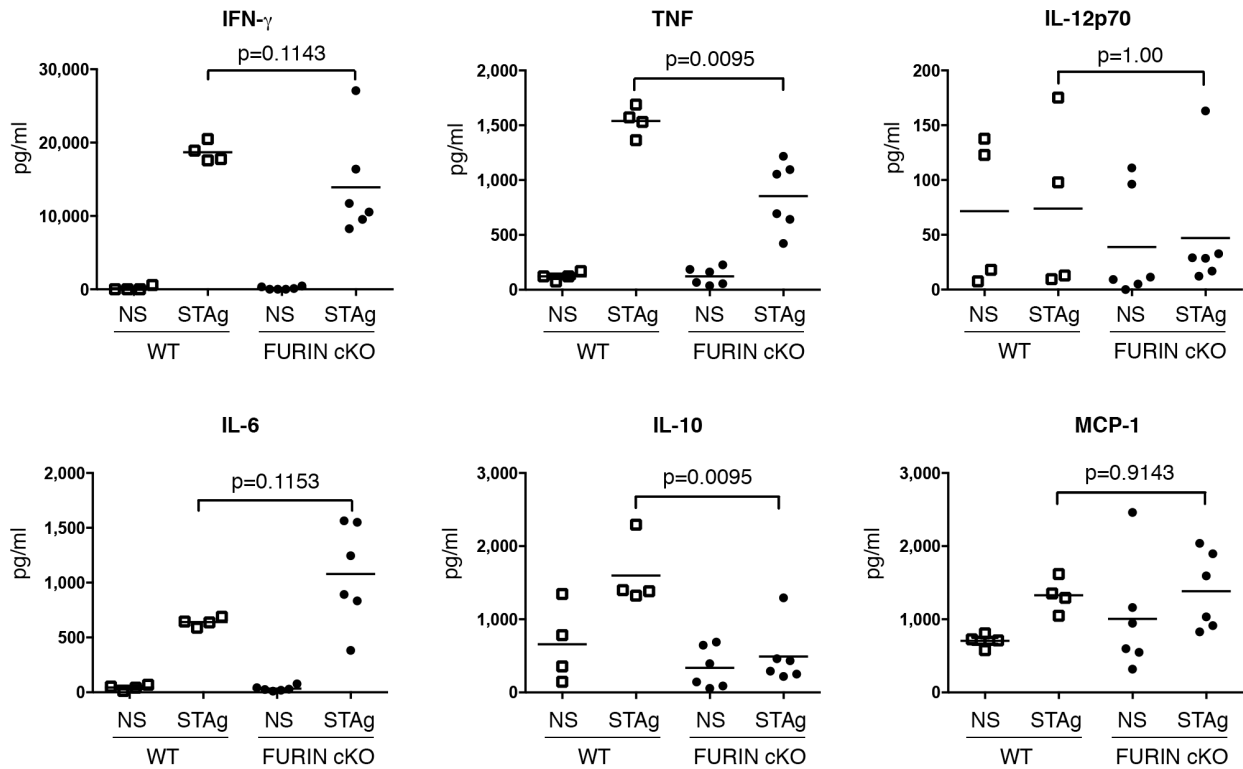


Figure S2. T-cell-expressed FURIN regulates the production of Th1 type cytokines in response to *T. gondii* antigen stimulation. Splenocytes from *T. gondii* infected CD4cre-fur^{fl/fl} (n=6) and littermate (n=4) mice (38 dpi) were left unstimulated (ns) or stimulated ex vivo with soluble *T. gondii* antigen (STAg, 5 μ g/ml) for 72 hrs. Cytokine levels were determined from supernatants with CBA kit (BD). Statistics were calculated with Mann-Whitney test.

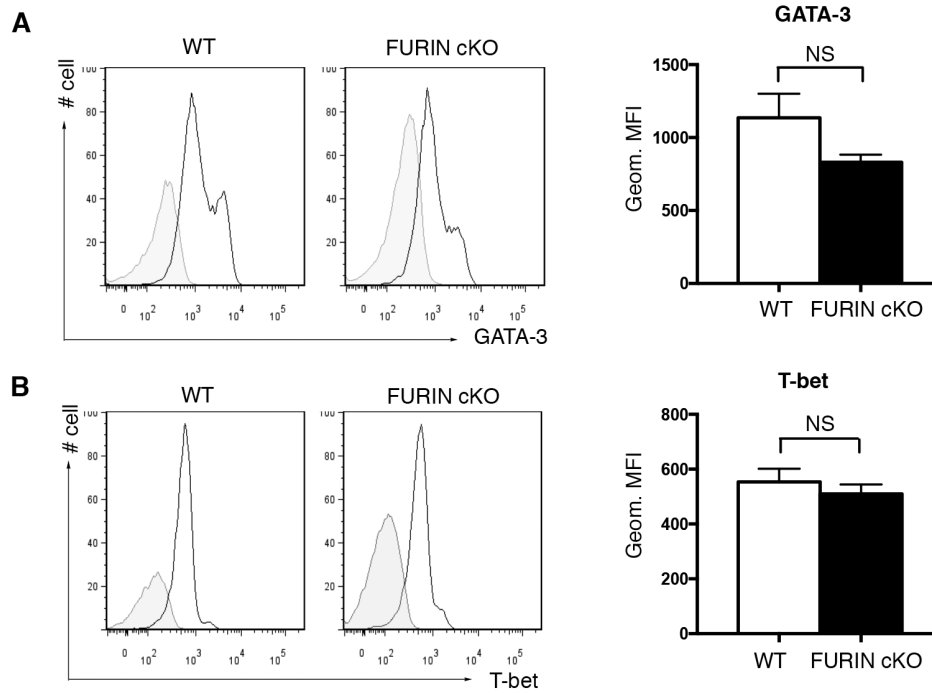


Figure S3. FURIN does not regulate the expression of GATA-3 or T-bet in thymic CD4+CD8-cells. Thymocytes from 12 weeks old CD4cre-fur^{f/f} (n=4) and littermate (n=3) mice were isolated and stained with CD4, CD8, T-bet and GATA-3 antibodies (eBioscience). Representative histograms (black stained cells, grey unstained cells) and quantification of geometric MFIs are shown for GATA-3 (A) and T-bet (B). No statistical differences (ns) were found using Mann-Whitney test.