

Figure 1: Sub-graphs computed using InfoMap. Sub-graph 1: SM, 2: DMN, 3: Visual, 4: FPN, 5: Saliience, 6: Sub-cortical, 7: VA, 8: Cerebellum, 9: Medial temporal areas, 10: Right temporal region

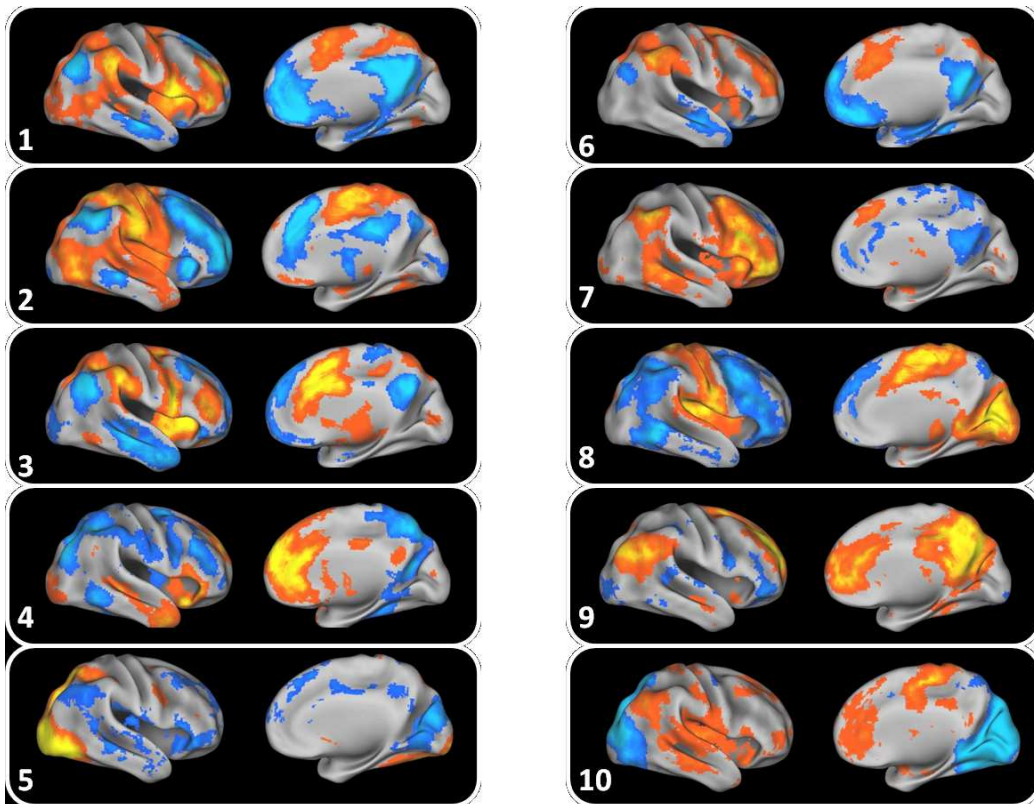


Figure 2: TFMs computed using ICA.

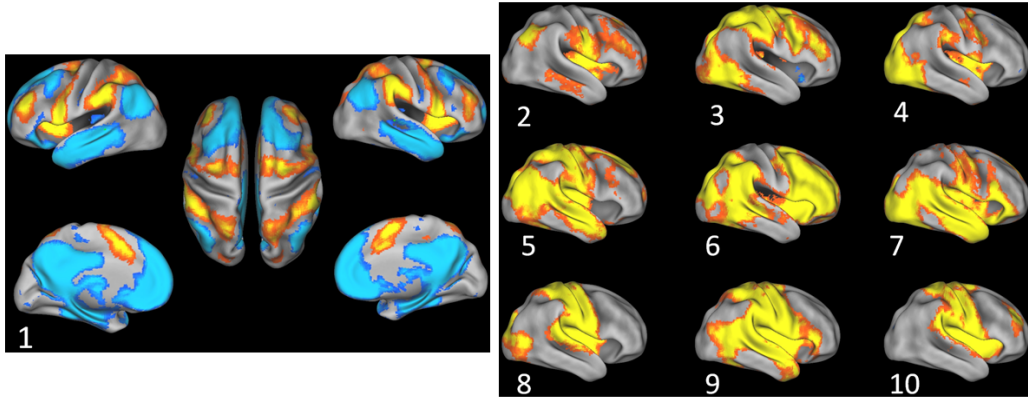


Figure 3: SCPs computed without global signal regression. Only SCP 1 has a significant area of negative correlation - the Dorsal Attention vs. Default mode anti-correlation pattern. The other nine SCPs showed only positive correlation. Of these, the familiar patterns were the sensori-motor (8, 9 and 10), visual (4, 7) and cingulo-opercular networks (2).

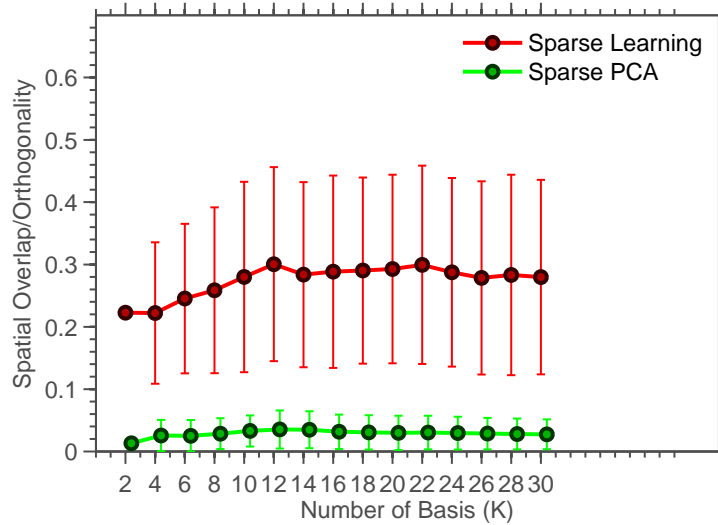


Figure 4: Average orthogonality measured for Sparse Learning and Sparse PCA, measured at a sparsity level of 30%