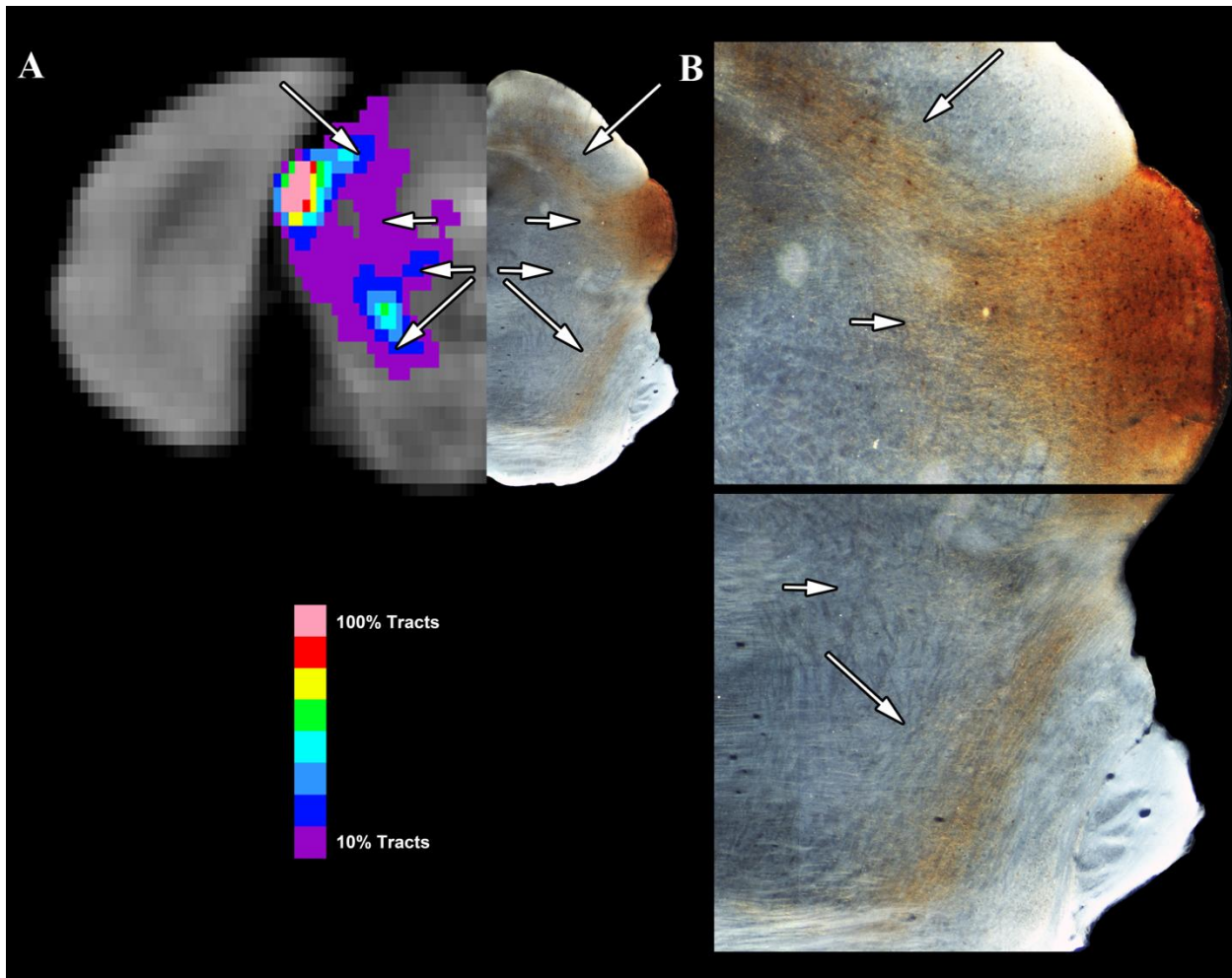


Supplementary Figures



Supplementary Figure 1. Connections to the Midbrain and Pons. Panel A shows the probabilistic tractography results for tracts that pass through the midbrain waypoint mask. Notably there are connections to the periaqueductal gray, portions of the pons, and superior colliculus. These results are echoed in the anterograde tracing results presented in Panel B, which white arrows used to indicate relative points of similar patterns of tractography.