

Supplemental Materials

Molecular Biology of the Cell

Snider et al.

Supplemental Figure 1. Immunoblotting and Coomassie stain of human liver lysates (2 normal and 2 HCC tumors) with serum from a rabbit prior to immunization with CD73S immunogenic peptide.

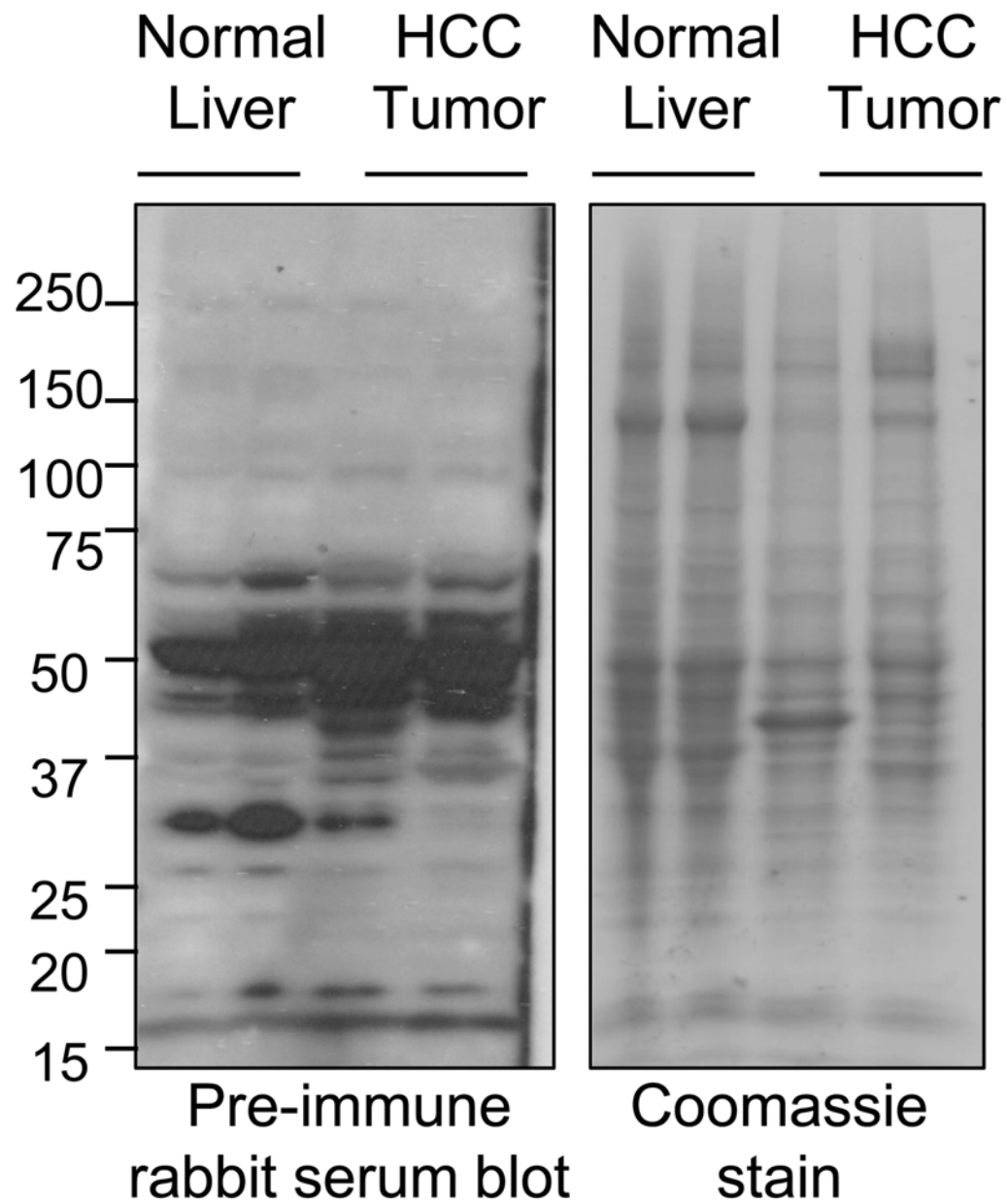
Supplemental Figure 2. A. Co-immunofluorescence analysis of Flag-CD73S (green) and the ER-marker protein PDI (red) in HEK293T cells. **B.** Flag immunoblot of lysates from HEK-293T cells transfected with cDNA encoding Flag-CD73L in combination with Flag-CD73S (lane 1) or mouse Flag-GAPDH (lanes 2-4). The amount of CD73L cDNA transfected was equal among all 4 lanes and GAPDH cDNA was in 2-fold excess of CD73L cDNA. **C.** CD73S/L immunoblot (N-terminus antibody) of transfected HEK293T lysates [Flag-CD73 (2 μ g), GFP-CD73L (2 μ g) or a combination of the two (1 μ g each)] showing that CD73S negatively regulates CD73L. **D.** Expression of Flag-CD73S and Flag-cN-IA individually (lanes 1, 2) or in combination (equal cDNA amount) demonstrating that CD73S downregulates cN-IA protein expression.

Supplemental Table 1. Primers used for quantitative real-time PCR

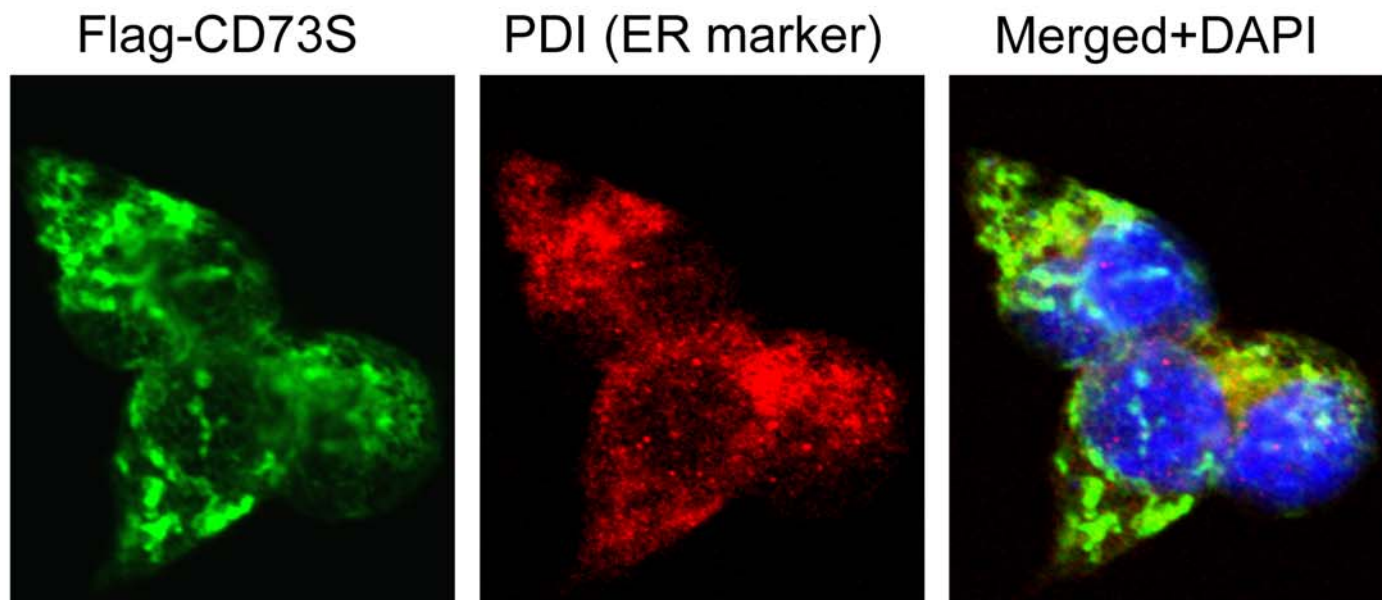
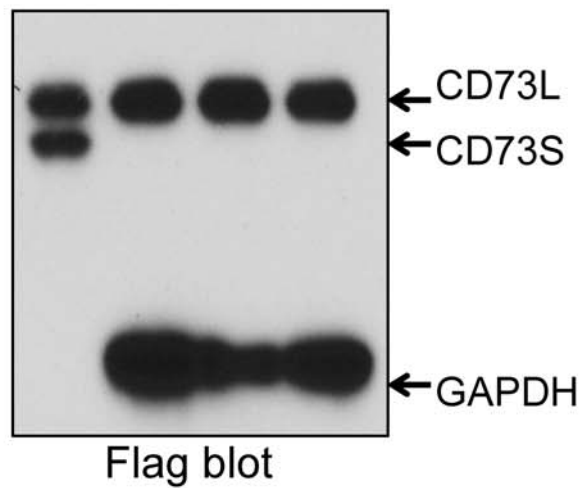
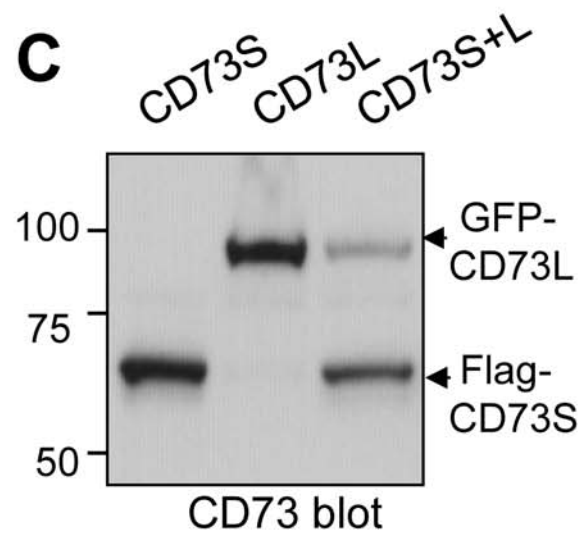
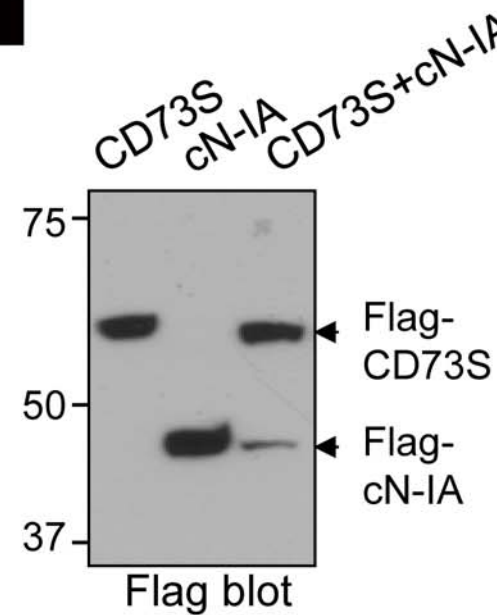
Human NT5E-1 Forward:	CTCCTCTCAATCATGCCGCT
Human NT5E-1 Reverse:	CAAATGTGCCTCCAAAGGGC
Human NT5E-2 Forward:	TGATGAACGCAACAATGGAATC
Human NT5E-2 Reverse:	TCTGGAACCCATCTCCACCA
Human 18S Forward:	CCATCCAATCGGTAGTAGCG
Human 18S Reverse:	GTAACCCGTTGAACCCATT
Mouse AK047143 Forward:	CCATGTGCATTGTAAACGGAGGTG
Mouse AK047143 Reverse:	TTTGGTTTGTGGTTGGCAGCAGAG
Mouse 18S Forward:	ACCTGGTTGATCCTGCCAGTAG
Mouse 18S Reverse:	TTAATGAGCCATTTCGCAGTTTC

Supplemental Table 2. Clinical Description of surgical and biopsy human liver specimens used in the present study.

HCC surgical specimens					
Sample	Lab Info	Etiology	Max Tumor	# tumors	surrounding liver
HCC #1	Tumor (large, white+brown, soft)	none	8.6 cm	1	normal
HCC #2	Tumor (med-large pieces, T2-pink)	HCV	5.2 cm	2	fibrosis
HCC #3	Tumor (small, soft)	HCV	2.2 cm	1	cirrhosis
HCC #4	Tumor (huge, white+pink, soft)	none	23 cm	numerous	normal
HCC #5	Tumor (huge, white+yellow, soft)	none	8.5 cm	1	normal
HCC #6	Tumor (Medium, white, soft)	alcohol	4.4 cm	1	fibrosis
HCV cirrhosis biopsy specimens					
Sample	Confirmed Pathology	Fibrosis Score	AFP level		
HCV #1	Hepatitis C	6	3		
HCV #2	Hepatitis C	6	44.2		
HCV #3	Hepatitis C	6	9.1		
HCV #4	Hepatitis C	6	7.7		



Supplemental Figure 1

A**B****C****D**

Supplemental Figure 2