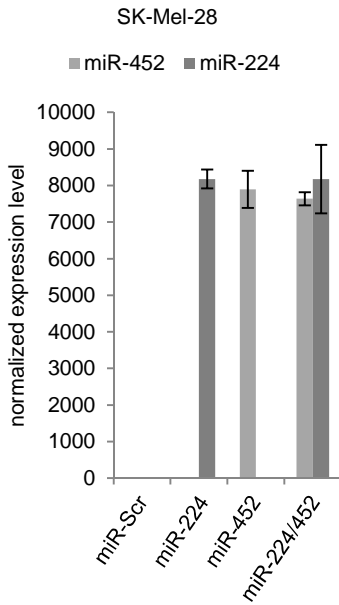
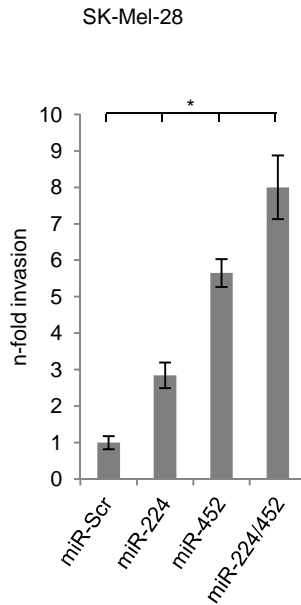


Supplementary Fig S2

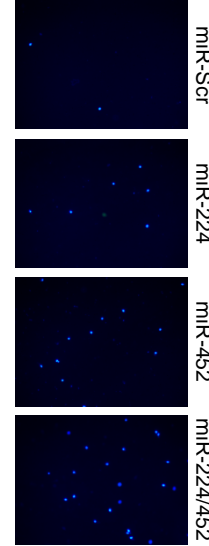
S2A



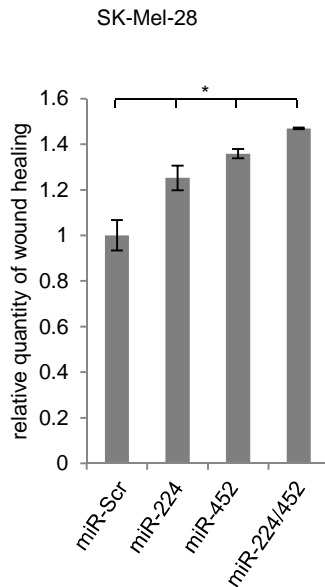
S2B



SK-Mel-28



S2C



SK-Mel-28

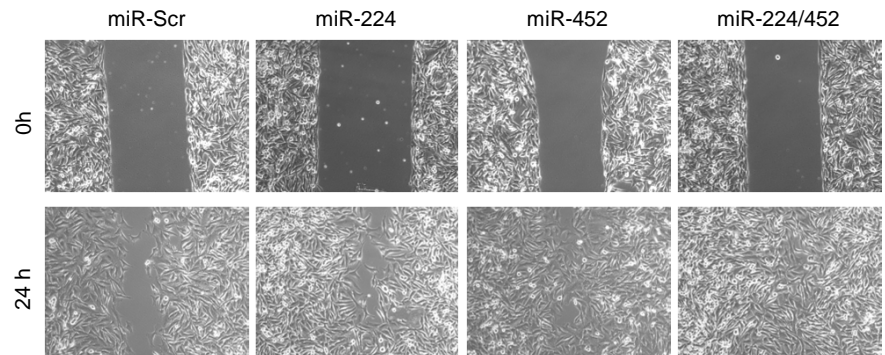


Figure S2. (A) Stable expression of miR-224/-452 was verified by TaqMan® MicroRNA single assays. (B-C) Overexpression of miR-224 and -452 induced typical invasive and migratory properties in less aggressive SK-Mel-28 cells shown by Boyden chamber and scratch assay, respectively. Data information: Bar graphs are represented as means \pm SD, $n = 3$ (A,C) or $n = 5$ (B), $*P \leq 0.05$, two-sided Student's t-test.