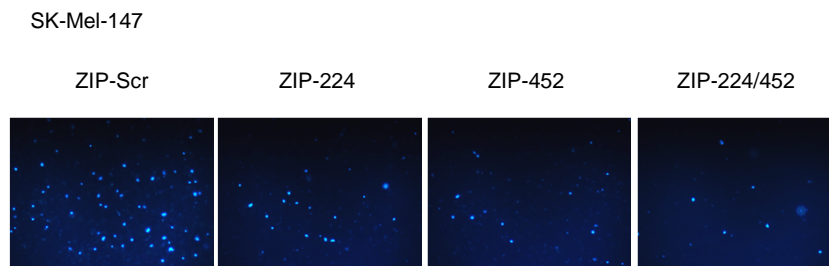
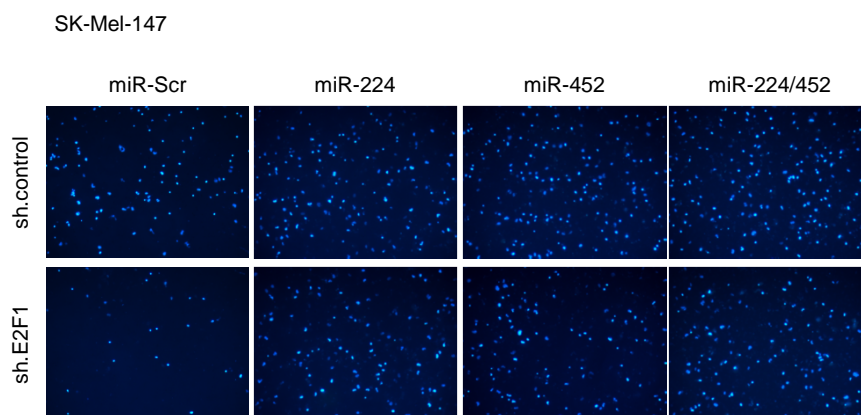


Supplementary Fig S3

S3A



S3B



S3C

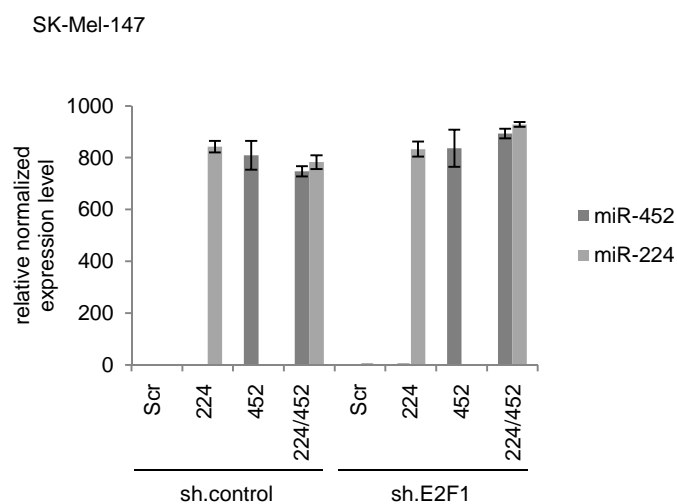


Figure S3. Representative images of invasion assays in SK-Mel-147 depleted for miR-224/452 (A), or treated with shE2F1 alone or in combination with miR-224/452 (B). (C) MiR-224/452 level after re-expression in E2F1-ablated and control cells. Data information: Bar graphs are represented as means \pm SD, n = 3.