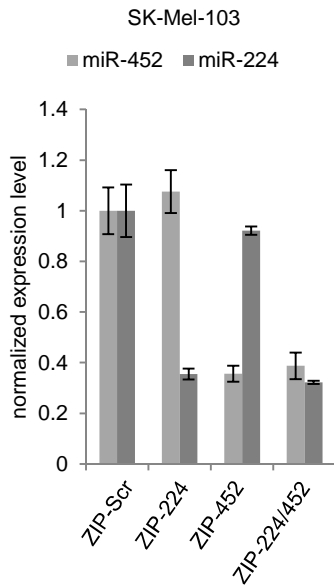
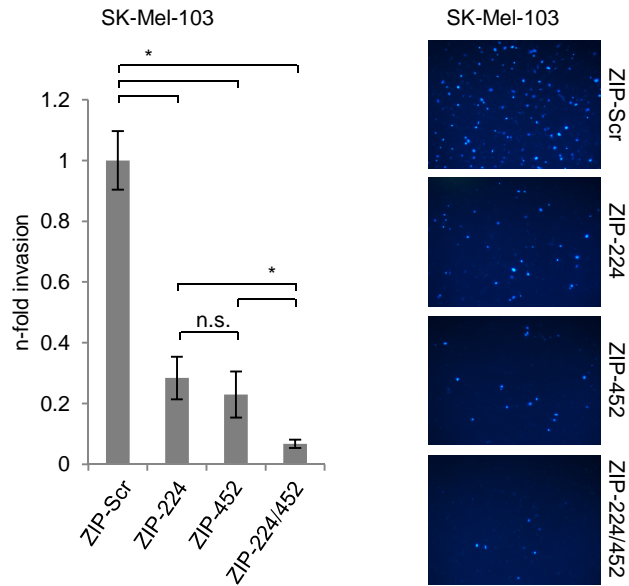


# Supplementary Fig S4

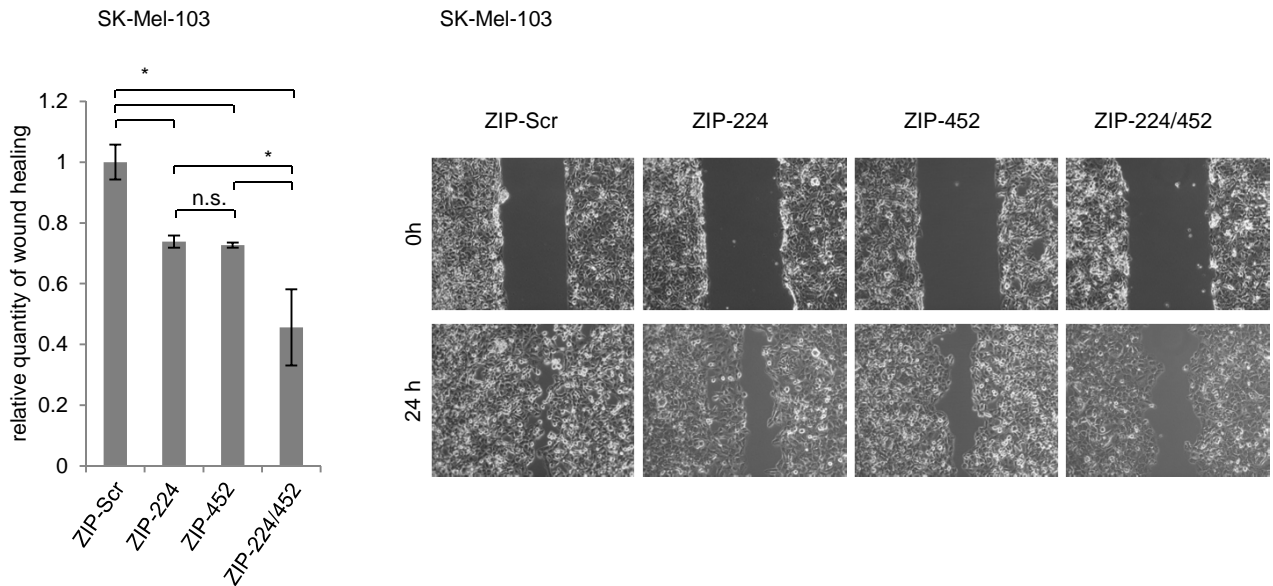
**S4A**



**S4B**



**S4C**



**Figure S4.** (A) Stable knockdown of miR-224/-452 by specific *miRZip Anti-microRNA* constructs was verified by TaqMan®MicroRNA single assays. (B-C) Effect of miR-224/452 knockdown on invasion and migration of SK-Mel-103 cells. Data information: Bar graphs are represented as means  $\pm$  SD,  $n = 3$  (A,C) or  $n = 5$  (B),  $*P \leq 0.05$ , two-sided Student's t-test.