

Table S1. Primer list.

Gene	AGI number	Sequence
qRT-PCR		
<i>Dof5.8</i> , Fig. 4 (a)	At5g66940	AGGAGGATCTGTTGCGATTCC CGAGGACAAGAAAGCTGCTC
<i>Dof5.8</i> , Fig.2 and Fig.4(b)	At5g66940	AAGCCGGAACCTTCCCTTAC AGAGCTGAAACCGCCATAGA
<i>Dof5.8</i> , Fig. 4 (c)	At5g66940	TGGCAGTTTGAAGGTCAAGA GATTGAAACCCTCCGATGAA
<i>UBQ10</i>	At4g05320	GGCCTTGATAATCCCTGATGAATAAG AAAGAGATAACAGGAACGGAAACATAGT
ChIP-qPCR		
a (-1492 to -1322)	At5g66940	CAGAGAGGAAAAGGACAAAAAGAAT TTCACACCAAAAAGCATCCAACATT
b (-1268 to -1159)	At5g66940	TTACCCGACAACCTTCGCTTC ACAGGAAAGAAGAGAGGGTAGTAAT
ATHB8	At4g32880	GAAAGGAAGGCTAAACGAATTTGC GTGTCCGGCTGTGTTGAAAAG
UBQ10	At4g05320	CAAATTCCTCCCTTTAAGCACC AACTTATCCGGTCCTAGATCATCAG
Cloning		
<i>MP</i> ^a	At1g19850	CT <u>ACCATGG</u> CTTCATTGTCTTGTGTTGAAGAC GTA <u>AGGCCTT</u> GAAACAGAAGTCTTAAGATCGTTAA
<i>BDL</i> ^a	At1g04550	GTGCCATGGGTGGTGTGTCAGAATTGGAG GTGAGGCCTAACAGGGTTGTTTCTTTGTCTATC
<i>Dof5.8</i> promoter (M1)	At5g66940	TGTTGTGAGAAGTATGTGCCAAGAC GAGTCTCCAAAATGTTGGATGCT
<i>Dof5.8</i> promoter (M23)	At5g66940	GTTTTGTGAACTCTGTGAAGCGAAGGTTGTCGGGTAAAG GAATCTCTTCACAGAGTTTTGACTGTTTTTAGCCTCCCCA
<i>Dof5.8</i> promoter (M1234)	At5g66940	TGTAATGTGATTTGTTCCACAGGAAAAG GTGACTCTCTCTCTACCTTAAAG
Genotyping of T-DNA lines		
a	At1g19850	CATCTTCCCTAGTATGGCTTCGG
b	At1g19850	CACTCATCTGCTGGACCTCA
c	At1g19850	TGGTTTCTCCTCTACCAGTTGGAG
d	At5g66940	CAGCCATGGGCATGCCTTCTGAATTCAGTGAATC
e	At5g66940	GCCAGGCCTCGCTACGTAGTCTCCAGACACGA
SALK_LBb1	-	GCGTGGACCGCTTGCTGCAACT

^aRestriction sites for cloning are underlined.

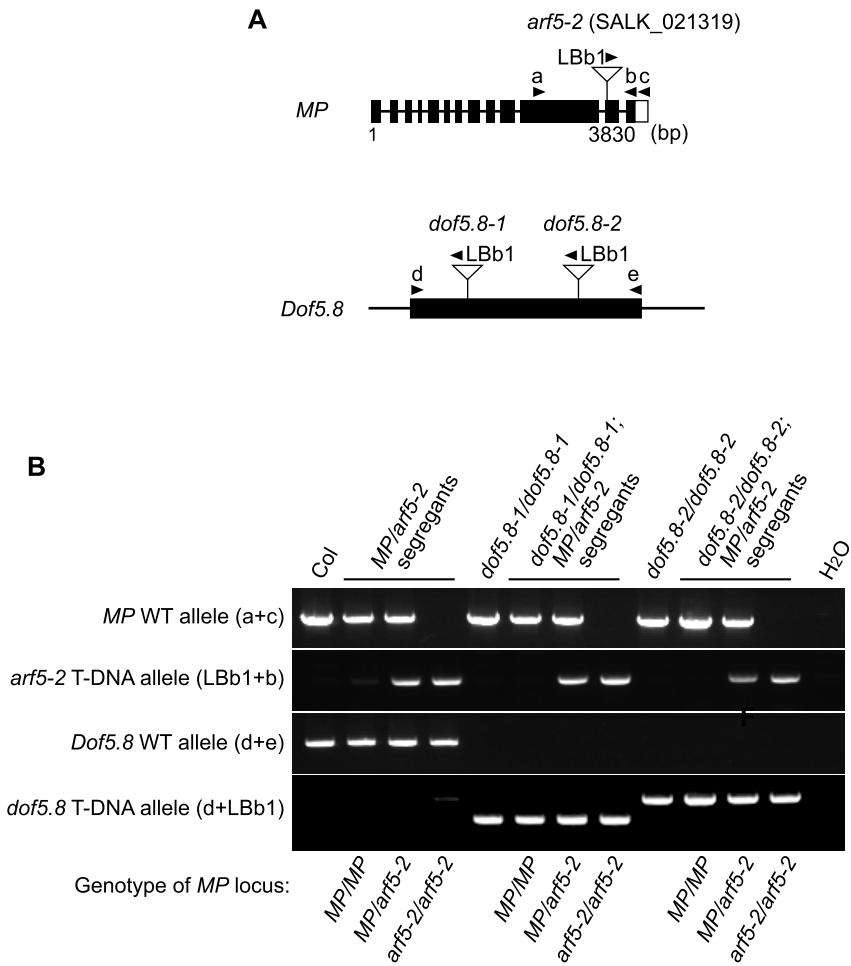


Figure S1. Genotyping of segregating populations of the *arf5-2* mutant harbouring the heterozygous *arf5-2* allele and the mutants that are heterozygous for the *arf5-2* allele and homozygous for the *dof5.8* allele. (A) Positions of primers used in genotyping. Sequences of the primers are shown in Table S1. (B) A representative image of the results of genotyping.