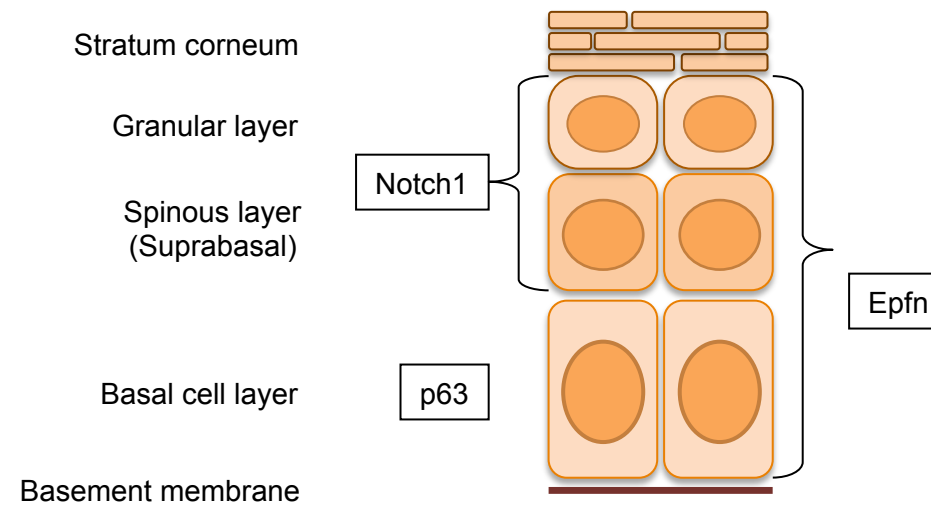
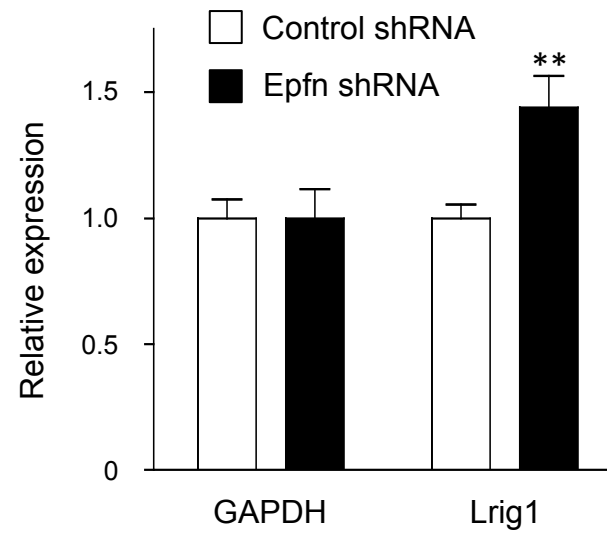


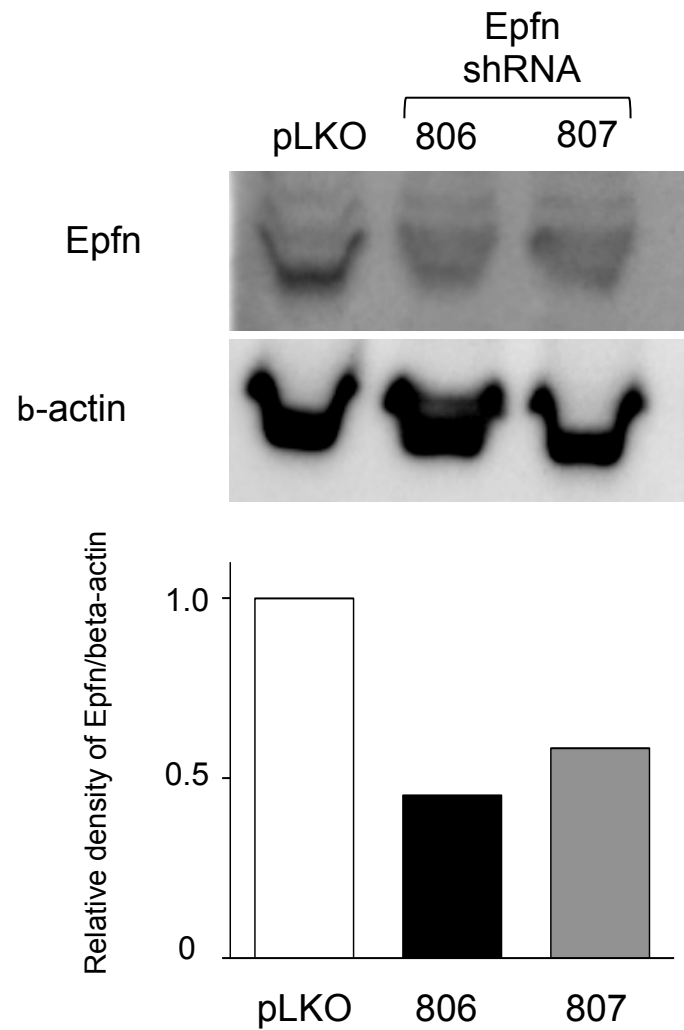
Scheme of Epfn, p63, and Notch 1 expression in epidermis



A schematic diagram of the epidermis and expression patterns of Epfn, p63, and Notch1. Stem cells and TA cells are localized in the basal layer and attach to the basement membrane. Basal layer keratinocytes express p63 and Epfn. Differentiating keratinocytes in the upper layers are not proliferative and express Notch1 and Epfn.



Expression of Lrig1 mRNA expression in HaCaT cells transfected with control shRNA and Epfn shRNA. The expression of Lrig1 was enhanced in Epfn knock-down HaCaT cells. Data show the mean+s.e.m (3 independent experiments); **P<0.01



Upper panel: Western blot analysis of the endogenous Epfn expression in human primary keratinocytes transfected with control shRNA and *Epfn* shRNA (806 and 807).

Lower panel: densitometric analysis of the Western blot assays using NIH ImageJ.

qPCR primer sequences	
Gene	Sequence
hEfn	5' GCAGCCTCTCCAACTTACC 3' 5' TTTCCAGGTCCTCGCAGGTTAC 3'
hNotch1	5' GCTGGACTGGTGAGGACTG 3' 5' AGCCCTCGTTACAGGGGTT 3'
hK10	5' TGGAAGCCTCCTTGGCAGAAACAGA 3' 5' CCTCTCCTTCTAGCAGGCTGCGGTA 3'
hInvoculin	5' GCACCTGGAACAGCAGGAAAAGCAC 3' 5' GTGGGCAGGGCTGGTTGAATGTCT 3'
hLrig1	5' GGGGACAGAAAGGAGGAAGT 3' 5' GCCTCTCAGAAGCAGCAAAT 3'
hHprt1	5' ATTGTAATGACCAGTCAACAGGG 3' 5' GCATTGTTTTGCCAGTGTCAA 3'
mEfn	5' TCTCACTATTTACCCTCCCCTG 3' 5' ACCTCATCTCTGCTTTCTCTCCG 3'
mGapdh	5' CCATCACCATCTTCCAGGAG 3' 5' GCATGGACTGTGGTCATGAG 3'

ChIP primer sequences

set A: 5'-AGC AGG GTA CCC GCC ACA GGA-3'
 5'-GAC TCG GTG CAG GGA CCA TGG-3'

set B: 5'-GCT CAA ACT TTT GGC CTC TG-3'
 5'- GTG AGG CTC AGA GTC GAG GT-3'

the intervening primer: 5'-ATT TGG CAA GAG GTG TG-3'
 5'-AGG CTG GGA GGG ACC TAG GAC-3'