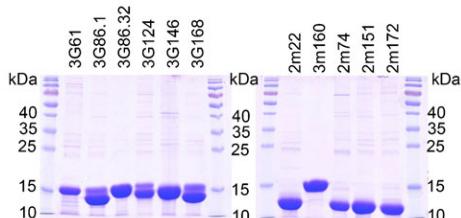


Supplementary Material

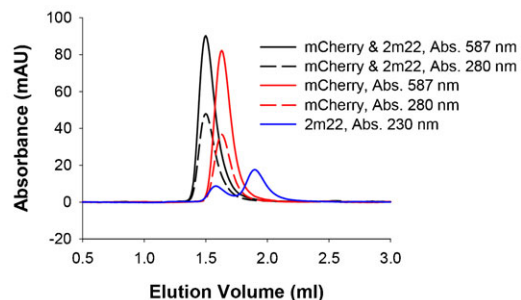
Michael Brauchle et al. doi: 10.1242/bio.201410041



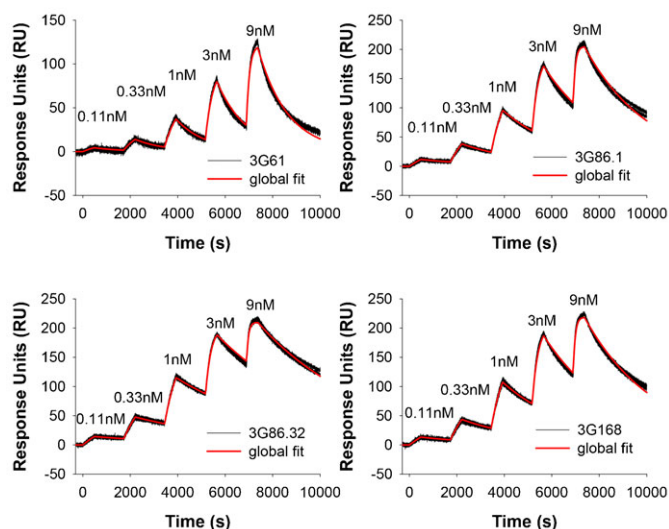
**Fig. S1. Alignment of GFP, sfGFP, eGFP, eYFP, mCherry and mRuby2.** Sequence-based alignment of GFP, sfGFP, eGFP, eYFP, mCherry and mRuby2. Identical residues to the GFP sequence (top line) are represented by a dot (.), gaps are shown by hyphens (-). Differences to GFP are written in one letter amino acid code and are highlighted in green, red and yellow for sfGFP, eGFP and eYFP, respectively. Differences between mCherry and mRuby2 are highlighted in gray. Compared to GFP (which was used in the RD selection) sfGFP differs in 10 residues (96% sequence identity), eGFP in 3 residues (99%) and eYFP in 6 residues (97%). mCherry (which was the target used in a different RD selection) and mRuby2 have sequence identities of 27 and 30% to GFP, respectively, and 54% to each other.



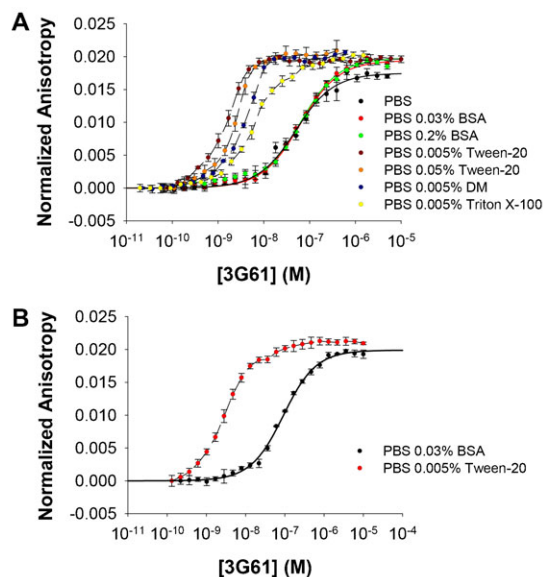
**Fig. S2. Analysis of IMC-purified DARPins.** IMC-purified DARPins were run on a 15% acrylamide gel. Note that some DARPins run as double bands; this however, is a known phenomenon: since DARPins are very stable they tend to not fully unfold despite an incubation in SDS loading buffer at 96°C (Binz et al., 2003).



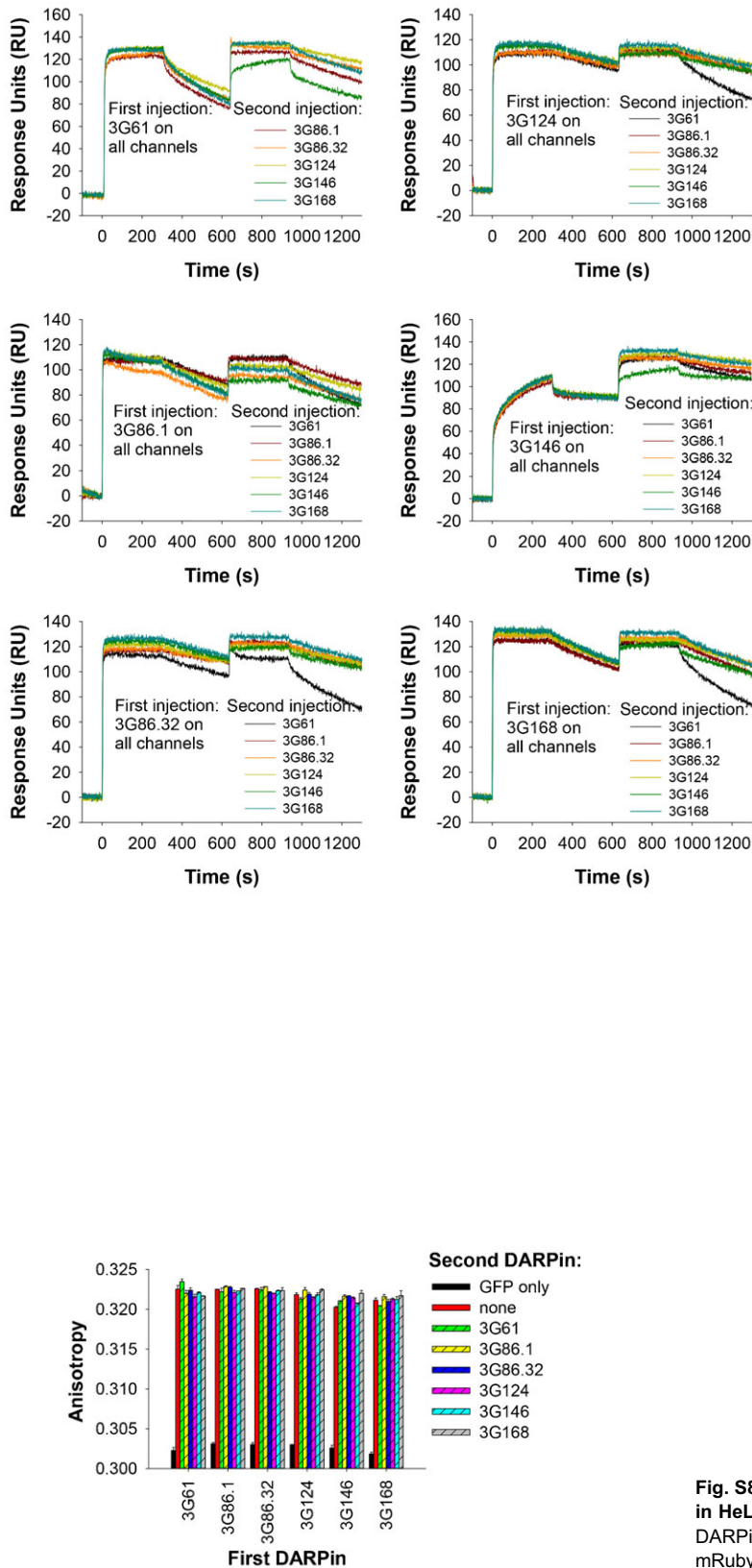
**Fig. S3. 2m22 binding to mCherry analyzed by SEC.** 2m22 and mCherry were run on SEC either alone or as an equimolar mixture. Elution of mCherry was followed by absorption at 280 nm and at its absorption maximum at 587 nm. Elution of 2m22 was followed by absorption at 230 nm (due to very low extinction coefficient at 280 nm). Upon co-incubation of 2m22 and mCherry a clear and complete shift towards higher molecular weights can be seen, indicating that also the dimeric fraction of 2m22 converts into a 1:1 complex with mCherry.



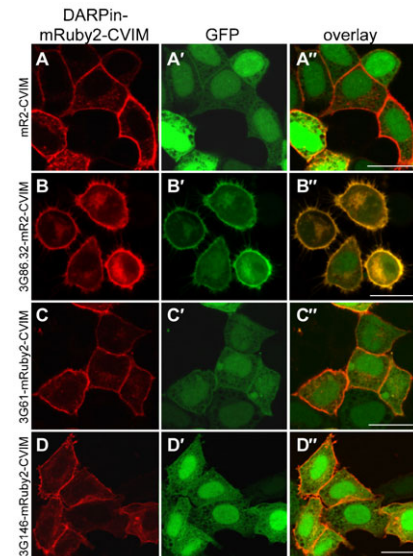
**Fig. S4. Kinetic titration SPR experiments of DARPins binding to GFP.** Five increasing DARPin concentrations (0.11, 0.33, 1, 3, and 9 nM) were injected over a GFP-coated surface and binding was monitored by SPR. Black curves represent duplicates of binding signals, red curves indicate a global fit to a 1:1 kinetic titration binding model (Karlsson et al., 2006). Extracted kinetic data can be found in Table 1.



**Fig. S5. Influence of buffer conditions on the affinity of anti-GFP DARPins 3G61 binding to GFP (A) and sfGFP (B).** Fluorescence anisotropy assays with anti-GFP DARPins 3G61 were carried out in different buffer conditions. (A) Binding to GFP: addition of BSA does not alter the  $K_D$  as assays performed in PBS, PBS with 0.03% BSA and PBS with 0.2% BSA all give  $K_D$ s of about 60 nM (Table 1). In contrast, addition of Tween-20, decyl-maltoside (DM) and Triton X-100 increases the affinity, although to different extents; note that the dashed lines do not represent a fitted curve, as these assay conditions are not suitable to obtain a quantitative result (as  $[GFP]$  is higher than  $K_D$ ). Nonetheless, it is obvious that the addition of Tween-20 increases the affinity to around the same  $K_D$  value determined by SPR (supplementary material Fig. S4 and Table 1), measured under the same conditions. (B) Also binding to sfGFP is much tighter in PBS with Tween-20; also here the dashed line does not represent a fit. For the affinity in PBS with 0.03% BSA, see Table 1.



**Fig. S6. SPR does not show simultaneous binding of any two DARPins to GFP.** A GFP-coated SPR surface was saturated by injection of one DARPin, dissociation was allowed to occur for 300 sec, followed by a second injection with another DARPin. No combination of two anti-GFP DARPins showed an increased binding above the plateau reached by the injection of the first anti-GFP DARPin alone, indicating that these DARPins cannot bind simultaneously.



**Fig. S8. Membrane-tethered anti-GFP-DARPin 3G86.32 can recruit GFP in HeLa cells.** Shown are HeLa cells transiently overexpressing different DARPin-mRuby2 versions tethered to the plasma membrane (DARPin-mRuby2-CVIM, A–D) together with GFP (A'–D') to indicate whether or not GFP is recruited to the plasma membrane (A''–D''). (A,A'') mRuby2-CVIM does not recruit unfused GFP to the membrane. (B,B'') High-affinity 3G86.32-mRuby2-CVIM recruits GFP to the membrane, as can be seen in the overlap of GFP and mRuby2 signal. (C,C'') Low-affinity 3G61-mRuby2-CVIM and (D,D'') low-affinity 3G146-mRuby2-CVIM cannot re-localize GFP. Unprimed letters, mRuby2 channel; primed letters, GFP channel; double primed letters, overlay. Scale bars are 20  $\mu$ m.



**Table S1. Full-length nt sequences of DARPins used in this study****3G61:**

ATGAGAGGATCGCATCACCATCACCATCACGGATCCGACCTGGGTAAGAAACTGCTGGAAGCTGCTCGTGTGGTCAAGACGACGAAGT  
TCGTATCCTGATGGCTAACGGTGTGACGTTAACGCTCTTGACCGTTTGGTCTTACTCCGCTGCACCTTGCTGCTCAGCGTGGTCACTG  
AATCGTTGAAGTTCTGCTGAAGACGGTGTGACGTTAACGCTGCTGACATTGATGGTTATACTCCGCTGCACCTGGCTTTTTCTGGT  
CACCTGAAATCGTTGAAGTTCTGCTGAAGTACGGTGTGACGTTAACGCTGATGACGAGCTGGTTTTACTCCGCTGCACCTGGTGTCT  
ATTTTTGGTCACTGGAATCGTTGAAGTTCTGCTGAAGAACGGTGTGACGTTAACGCTCAGGACAAATTCGGTAAGACCGCTTTCAC  
ATCCATCGACAACGGTAACGAGGACCTGGCTGAAATCCTGCAAAAAGCTTAATTA

**3G86.1:**

ATGAGAGGATCGCATCACCATCACCATCACGGATCCGACCTGGGTAAGAAACTGCTGGAAGCTGCTCGTGTGGTCAAGACGACGAAGT  
TCGTATCCTGATGGCTAACGGTGTGACGTTAACGCTCTTGACCGTTTGGTCTTACTCCGCTGCACCTTGCTGCTCAGCGTGGTCACTG  
GAAATCGTTGAAGTTCTGCTGAAGTGTGGTGTGACGTTAACGCTGCTGACCTTTGGGTCAGACTCCGCTGCACCTGGCTGCTACTG  
GGTCACTGGAATCGTTGAAGTTCTGCTGAAGAACGGTGTGACGTTAACGCTGCTGACAATATTGGTCATACTCCGCTGCACCTGGCT  
GCTTGGGCTGGTCACTGGAATCGTTGAAGTTCTGCTGAAGAACGGTGTGACGTTAACGCTCAGGACAAATTCGGTAAGACCGCTTTC  
GACATCTCCATCGACAACGGTAACGAGGACCTGGCTGAAATCCTGCAAAAAGCTTAATTA

**3G86.32:**

ATGAGAGGATCGCATCACCATCACCATCACGGATCCGACCTGGGTAAGAAACTGCTGGAAGCTGCTCGTGTGGTCAAGACGACGAAGT  
TCGTATCCTGATGGCTAACGGTGTGACGTTAACGCTCTTGACCGTTTGGTCTTACTCCGCTGCACCTTGCTGCTCAGCGTGGTCACTG  
GAAATCGTTGAAGTTCTGCTGAAGTGTGGTGTGACGTTAACGCTGCTGACCTTTGGGTCAGACTCCGCTGCACCTGGCTGCTACTG  
GGTCACTGGAATCGTTGAAGTTCTGCTGAAGTACGGTGTGACGTTAACGCTCTTGACCTTATTGGTAAGACTCCACTGCACCTGACT  
GCTATTGATGGTCACTGGAATCGTTGAAGTTCTGCTGAAGAACGGTGTGACGTTAACGCTCAGGACAAATTCGGTAAGACCGCTTTC  
GACATCTCCATCGACAATGGTAACGAGGACCTGGCTGAAATCCTGCAAAAAGCTTAATTA

**3G124:**

ATGAGAGGATCGCATCACCATCACCATCACGGATCCGACCTGGGTAAGAAACTGCTGGAAGCTGCTCGTGTGGTCAAGACGACGAAG  
TTCTGATCCTGATGGCTAACGGTGTGACGTTAACGCTGCTGACGATGTTGGTGTACTCCTCTGCACCTGGCTGCTCAGCGTGGTCACT  
GGAAATCGTTGAAGTTCTGCTGAAGTGTGGTGTGACGTTAACGCTGCTGACCTTTGGGTCAGACTCCGCTGCACCTGGCTGCTACTG  
TGCTCACTGGAATCGTTGAAGTTCTGCTGAAGAACGGTGTGACGTTAACGCTGCTGACAATATTGGTCATACTCCGCTGCACCTGGC  
TGCTTGGGCTGGTCACTGGAATCGTTGAAGTTCTGCTGAAGAACGGTGTGACGTTAACGCTCAGGACAAATTCGGTAAGACCGCTTTC  
GCATCTCCATCGACAACGGTAACGAGGACCTGGCTGAAATCCTGCAAAAAGCTTAATTA

**3G146:**

ATGAGAGGATCGCATCACCATCACCATCACGGATCCGACCTGGGTAAGAAACTGCTGGAAGCTGCTCGTGTGGTCAAGACGACGAAGT  
TCGTATCCTGATGGCTAACGGTGTGACGTTAACGCTCTTGACCGTTTGGTGTACTCCGCTGCACCTTGCTGCTCAGCGTGGTCACTG  
GAAATCGTTGAAGTTCTGCTGAAGTACGGTGTGACGTTAACGCTGCTGACGTTAACGCTCTTGACCTTATTGGTAAGACTCCACTGC  
GGTCACTTGAATCGTTGAAGTTCTGCTGAAGAACGGTGTGACGTTAACGCTCTTGACCTTATTGGTAAGACTCCACTGCACCTGGCT  
GCTGCTATGGGTCACCTGGAATCGTTGAAGTTCTGCTGAAGAACGGTGTGACGTTAACGCTCAGGACAAATTCGGTAAGACCGCTTTC  
GACATCTCCATCGACAACGGTAACGAGGACCTGGCTGAAATCCTGCAAAAAGCTTAATTA

**3m160:**

ATGAGAGGATCGCATCACCATCACCATCACGGATCCGACCTGGGTAAGAAACTGCTGGAAGCTGCTCGTGTGGTCAAGACGACGAAGT  
TCGTATCCTGATGGCTAACGGTGTGACGTTAACGCTCTTGACCGTTTGGTGTACTCCGCTGCACCTTGCTGCTCAGCGTGGTCACTG  
GAAATCGTTGAAGTTCTGCTGAAGAACGGTGTGACGTTAACGCTCTTGACCTTATTGGTAAGACTCCACTGCACCTGGCTGCTACTG  
GGTCACTGGAATCGTTGAAGTTCTGCTGAAGAACGGTGTGACGTTAACGCTCTTGACCGTTTGGTGTACTCCGCTGCACCTGGCTGCT  
TGCTAATAATGGTCACTGGAATCGTTGAAGTTCTGCTGAAGAACGGTGTGATGTTAACGCTCAGGACAAATTCGGTAAGACCGCTTTC  
GCATCTCCATCGACAACGGTAACGAGGACCTGGCTGAAATCCTGCAAAAAGCTTAATTA

**3G168:**

ATGAGAGGATCGCATCACCATCACCATCACGGATCCGACCTGGGTAAGAAACTGCTGGAAGCTGCTCGTGTGGTCAAGACGACGAAGT  
TCGTATCCTGATGGCTAACGGTGTGACGTTAACGCTCTTGACCGTTTGGTGTACTCCGCTGCACCTTGCTGCTCAGCGTGGTCACTG  
GAAATCGTTGAAGTTCTGCTGAAGTGTGGTGTGACGTTAACGCTGCTGACCTTTGGGTCAGACTCCGCTGCACCTGGCTGCTACTG  
GGTCACTGGAATCGTTGAAGTTCTACTGAAGAACGGTGTGACGTTAACGCTCTGACAATATTGGTCATACTCCGCTGCACCTGGCT  
GCTTGGGCTGGTCACTGGAATCGTTGAAGTTCTGCTGAAGAACGGTGTGACGTTAACGCTCAGGACAAATTCGGTAAGACCGCTTTC  
GACATCTCCATCGACAACGGTAACGAGGACCTGGCTGAAATCCTGCAAAAAGCTTAATTA

**2m22:**

ATGAGAGGATCGCATCACCATCACCATCACGGATCCGACCTGGGTAAGAAACTGCTGGAAGCTGCTCGTGTGGTCAAGACGACGAAGT  
TCGTATCCTGATGGCTAACGGTGTGACGTTAACGCTCTTGACCGTTTGGTGTACTCCGCTGCACCTGGCTGCTTATCATGGTCACTG  
GAAATCGTTGAAGTTCTGCTGAAGAACGGTGTGACGTTAACGCTAATGACCTTTTGGTGTACTCCGCTGCACCTGGCTGCTATTCTG  
GTCACTGGAATCGTTGAAGTTCTGCTGAAGAACGGTGTGACGTTAACGCTCAGGACAAATTCGGTAAGACCGCTTTCGACATCTCC  
TCGACAACGGTAACGAGGACCTGGCTGAAATCCTGCAAAAAGCTTAAT

**2m74:**

ATGAGAGGATCGCATCACCATCACCATCACGGATCCGACCTGGGTAAGAAACTGCTGGAAGCTGCTCGTGTGGTCAAGACGACGAAGT  
TCGTATCCTGATGGCTAACGGTGTGACGTTAACGCTCTTGACCGTTTGGTGTACTCCGCTGCACCTGGTGTCTTACTGGTCACTG  
GAAATCGTTGAAGTTCTGCTGAAGAACGGTGTGACGTTAACGCTCAGGACTATAATGGTTTTACTCCGCTGCACCTGGCTGCTATGCGT  
GGTCACTGGAATCGTTGAAGTTCTGCTGAAGAACGGTGTGACGTTAACGCTCAGGACAAATTCGGTAAGACCGCTTTCGACATCTCC  
ATCGACAACGGTAACGAGGACCTGGCTGAAATCCTGCAAAAAGCTTAATTA

**2m151:**

ATGAGAGGATCGCATCACCATCACCATCACGGATCCGACCTGGGTAAGAAACTGCTGGAAGCTGCTCGTGTGGTCAAGACGACGAAGT  
TCGTATCCTGATGGCTAACGGTGTGACGTTAACGCTAATGACATTACTGGTATTACTCCGCTGCACCTGGCTGCTTTACTGGTCACTG  
GAAATCGTTGAAGTTCTGCTGAAGAACGGTGTGACGTTAACGCTAATGACTATAATGGTTATACTCCGCTGCACCTGGCTGCTATGCA  
GGTCACTGGAATCGTTGAAGTTCTGCTGAAGAACGGTGTGACGTTAACGCTCAGGACAAATTCGGTAAGACCGCTTTCGACATCTCC  
ATCGACAACGGTAACGAGGACCTGGCTGAAATCCTGCAAAAAGCTTAATTA

**2m172:**

ATGAGAGGATCGCATCACCATCACCATCACGGATCCGACCTGGGTAAGAAACTGCTGGAAGCTGCTCGTGTGGTCAAGACGACGAAGT  
TCGTATCCTGATGGCTAACGGTGTGACGTTAACGCTGATGACATTACTGGTATTACTCCGCTGCACCTGGCTGCTTTACTGGTCACTG  
GAAATCGTTGAAGTTCTGCTGAAGAACGGTGTGACGTTAACGCTCAGGACTATGAGGGTTGGACTCCGCTGCACCTGGCTGCTACTAA  
TGCTCACTGGAATCGTTGAAGTTCTGCTGAAGAACGGTGTGACGTTAACGCTCAGGACAAATTCGGTAAGACCGCTTTCGACATCTCC  
CATCGACAACGGTAACGAGGACCTGGCTGAAATCCTGCAAAAAGCTTAATTA