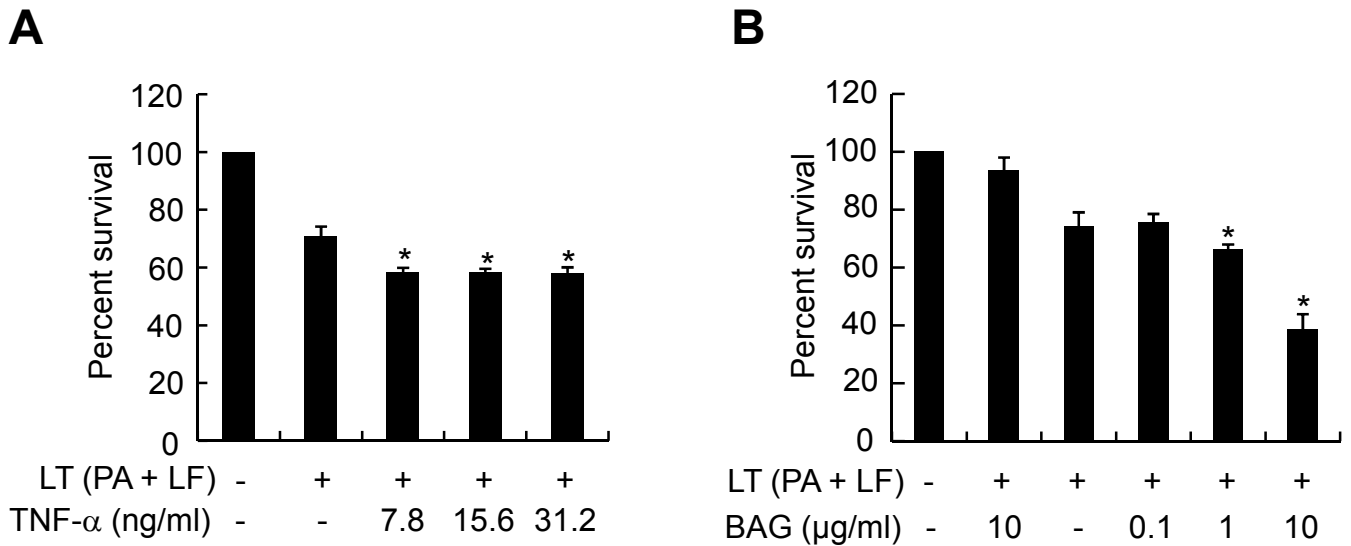


## Additional file 1 : Supplementary Figure 1



### Supplementary Figure 1. Pretreatment of low concentrations of TNF- $\alpha$ and BAG

**enhances LT-mediated cytotoxicity.** (A) J774A.1 cells were pre-treated with 0, 7.8, 15.6, or 31.2 ng/ml TNF- $\alpha$  for 24 h, and then LT (0.1  $\mu$ g/ml PA + 0.1  $\mu$ g/ml LF) was added. (B) J774A.1 cells were pre-treated with 0, 0.1, 1, or 10  $\mu$ g/ml BAG for 24 h, and then LT (0.1  $\mu$ g/ml PA + 0.1  $\mu$ g/ml LF) was added. After the 4-h incubation with LT, cell viability was determined using MTT assay. The y axis represents the percent survival relative to control values and is given as the mean  $\pm$  SD derived from three separate experiments. \* P < 0.05 as compared with the untreated control group.