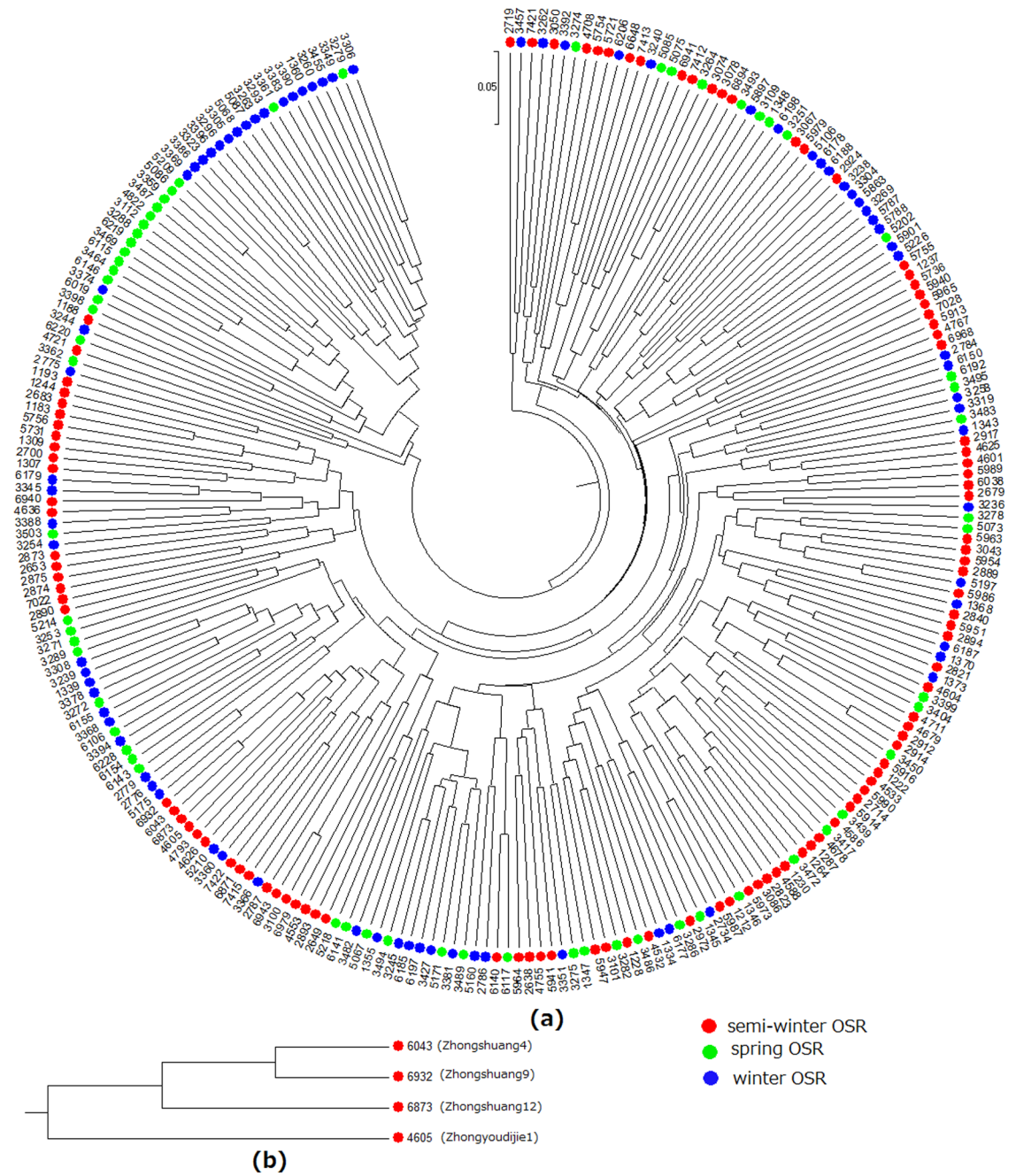


**Supplemental Fig. 1.** The allelic variations in *B. napus* and *B. oleracea* identified by the primer pair BnEMS0628. A. The capillary electrophoresis graph of an allele of BnEMS0628 in a *B. napus* line; B. The capillary electrophoresis graph of an allele of BnEMS0628 in a *B. oleracea* line.



**Supplemental Fig. 2.** UPGMA dendrograms of rapeseed lines based on Nei's distance. Label colors represent the germplasm types. a. A UPGMA dendrogram of 248 rapeseed lines; b. A UPGMA dendrogram of four rapeseed lines which pedigree was known.