

## Supplemental Table 1

### *Antibodies*

| <u>Antibody</u> | <u>Conjugate</u>          | <u>Clone</u> | <u>Source</u>             |
|-----------------|---------------------------|--------------|---------------------------|
| Flk2/CD135 PE   | PE                        | N418         | eBiosciences              |
| CD27            | APC                       | LG.7F9       | eBiosciences              |
| CD115           | APC                       | AFS98        | eBiosciences              |
| PDCA-1          | APC                       | eBio10129C   | eBiosciences              |
| c-kit/CD117     | Pe-Cy7                    | 2B8          | eBiosciences              |
| Gr-1            | Pe-Cy7                    | RB6-8C5      | eBiosciences              |
| B220            | APC0eFluo780              | RA3-6B2      | eBiosciences              |
| CD11c           | PerCP-Cy5.5               | N418         | eBiosciences              |
| CD16/32         | PerCP-Cy5.5               | 93           | eBiosciences              |
| MHC class II    | Biotin                    | M5/114.15.2  | eBiosciences              |
| CD11b           | PeCy7                     | M1/70        | BD Biosciences            |
| CD8             | PE                        | 53-67        | BD Biosciences            |
| Ly6G            | PE                        | 1A8          | Miltenyi Biotec           |
| CD3             | Purified / AlexaFluor 488 | 145-2C11     | Bio X-Cell / Bhattacharya |
| CD3             | Purified / Pacific Blue   | 145-2C11     | Bio X-Cell / Bhattacharya |
| CD4             | Purified / Pacific Blue   | GK1.5        | Bio X-Cell / Bhattacharya |
| CD8             | Purified / Pacific Blue   | 53-6.72      | Bio X-Cell / Bhattacharya |
| CD11b           | Purified / Pacific Blue   | M1/70        | Bio X-Cell / Bhattacharya |
| CD11c           | Purified / Pacific Blue   | N418         | Bio X-Cell / Bhattacharya |
| CD19            | Purified / Pacific Blue   | 1D3          | Bio X-Cell / Bhattacharya |
| B220            | Purified / Pacific Blue   | 6B2          | Bio X-Cell / Bhattacharya |
| Terr119         | Purified / Pacific Blue   | Terr119      | Bio X-Cell / Bhattacharya |
| Gr-1            | Purified / Pacific Blue   | 8C5          | Bio X-Cell / Bhattacharya |

|               |                           |            |                           |
|---------------|---------------------------|------------|---------------------------|
| Sca-1         | Purified / Pacific Blue   | E13-161-70 | Bio X-Cell / Bhattacharya |
| CD45.1        | Purified / AlexaFluor 680 | A20.1.7    | Bio X-Cell / Bhattacharya |
| CD45.2        | Purified / AlexaFluor 488 | AL1-4A2    | Bio X-Cell / Bhattacharya |
| Ly6D          | Purified / AlexaFluor 488 | ThB        | Bio X-Cell / Bhattacharya |
| IL7R $\alpha$ | Purified / Biotin         | A7R34      | Bio X-Cell / Bhattacharya |
| Streptavidin  | Qdot605                   |            | Invitrogen                |

## **Supplemental Figure Legends**

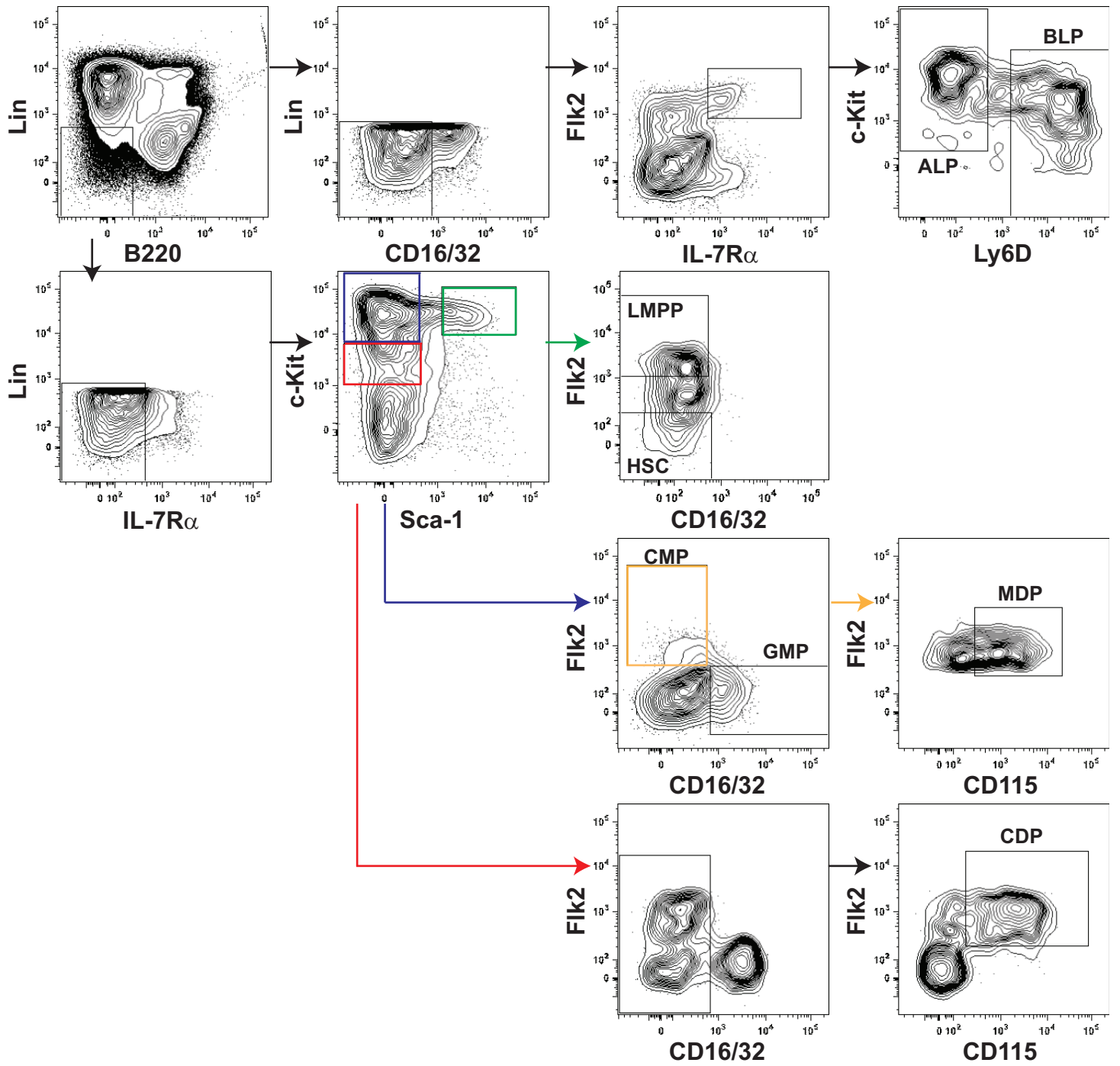
### **Figure 1. Gating strategy for hematopoietic stem and progenitor cells.**

Lineage (Lin) markers include CD3, CD4, CD8, CD11b, CD11c, CD19, Gr-1, and Terr119. ALP, all-lymphocyte progenitors; BLP, B lymphocyte progenitor; CDP, common dendritic cell progenitor; CMP, common myeloid progenitor; LMPP, lymphoid-primed multi-potent progenitor; HSC, hematopoietic stem cell; GMP, granulocyte-macrophage progenitor; MDP, macrophage-dendritic cell progenitor.

### **Figure 2. Gating strategy for mature cells in the bone marrow and spleen.**

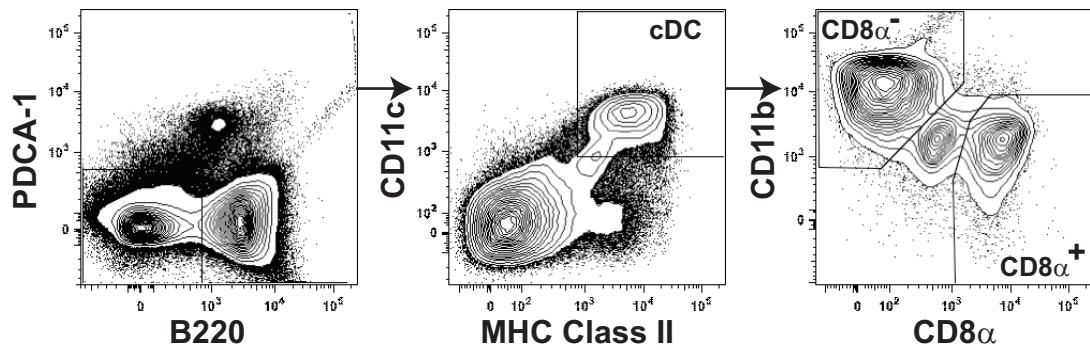
Gating strategy for (A) CD8 $\alpha^+$  and CD8 $\alpha^-$  classical dendritic cells (cDC) in the spleen, (B) plasmacytoid dendritic cells (pDC) in the spleen, (C) monocytes in the bone marrow and spleen, (D) B cells in the bone marrow, and (D) T cells and B cells in the spleen. Neut, neutrophils; mono, monocytes.

# Supplemental Figure 1

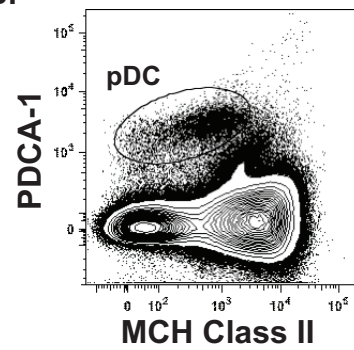


# Supplemental Figure 2

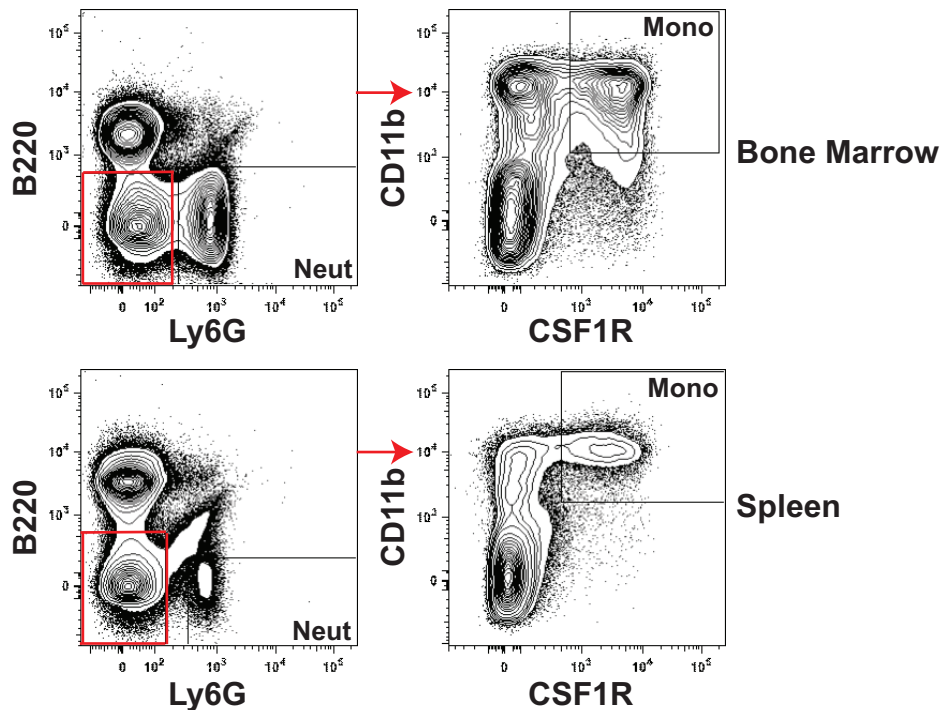
A.



B.



C.



D.

