

Supplementary information

Examples of the 13 ROIs drawn on coregistered FLAIR images using the in-house software Eval Gui.

Cerebellum

Measured on two slices, with the inferior slice at the level of the middle cerebellar peduncle.



Medial frontal cortex

Measures on three slices, with the middle slice at the level of the foramina of Monro. The ROIs included the cortex and were 2 voxels wide.



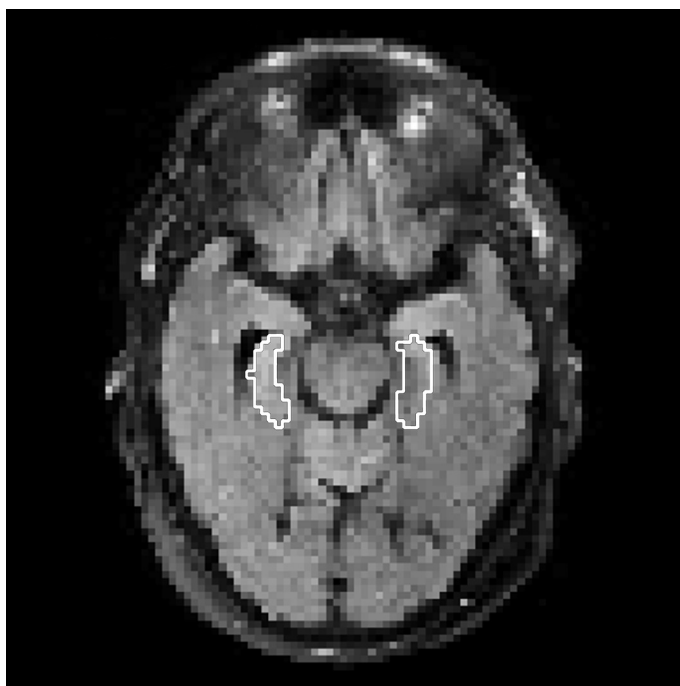
Lentiform nucleus right and left

Measured on one slice bilaterally at the level of the foramina of Monro.



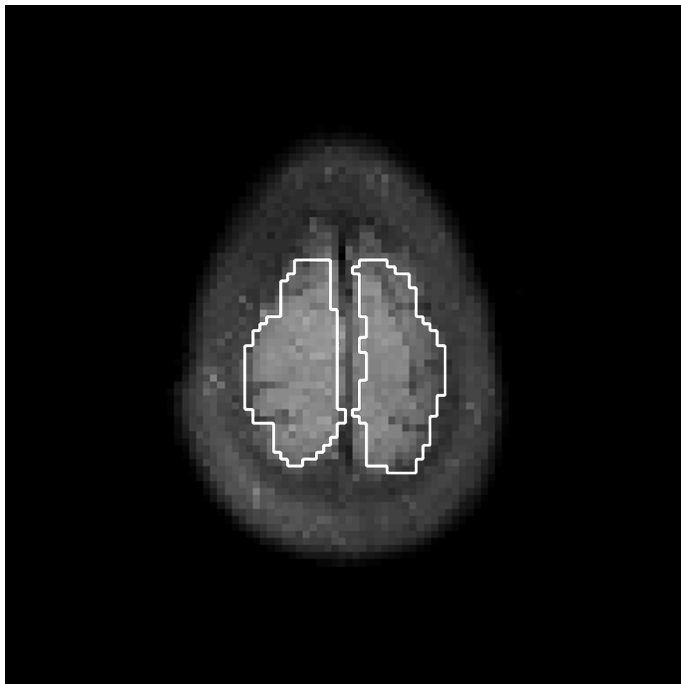
Medial temporal lobe

Measured on both sides of one slice at the level of the temporal horns. The ROIs were drawn from the anterior margin of the temporal horns to the posterior part of the brainstem.



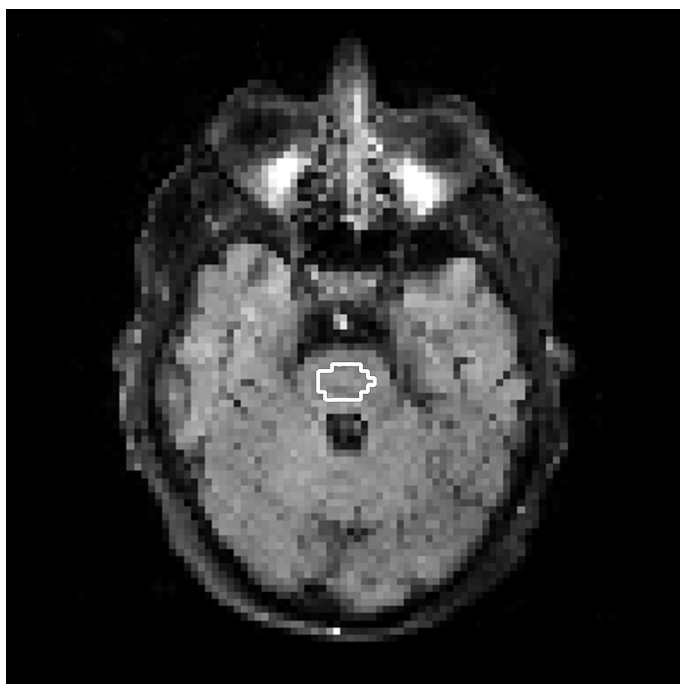
High convexity cortex

Measured on the two most superior slices including brain parenchyma.



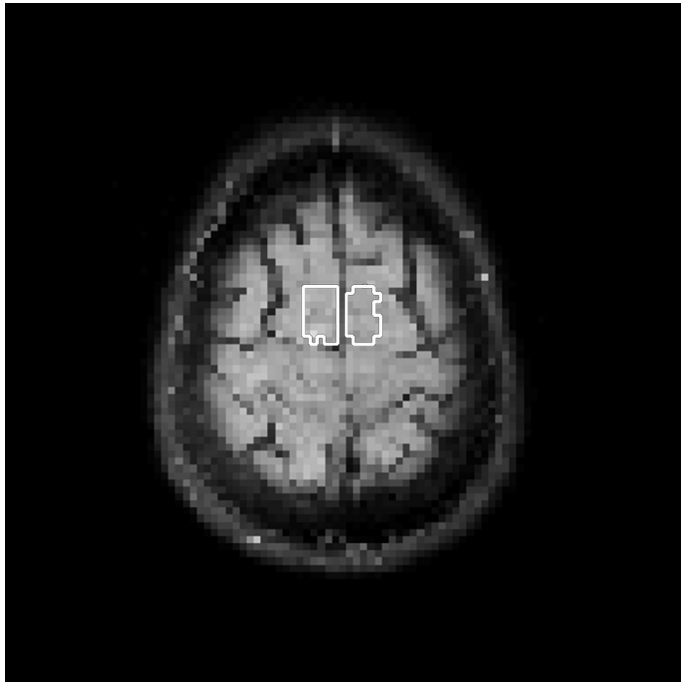
Pons

Measured on three slices, with the middle slice at the level of the middle cerebellar peduncles.



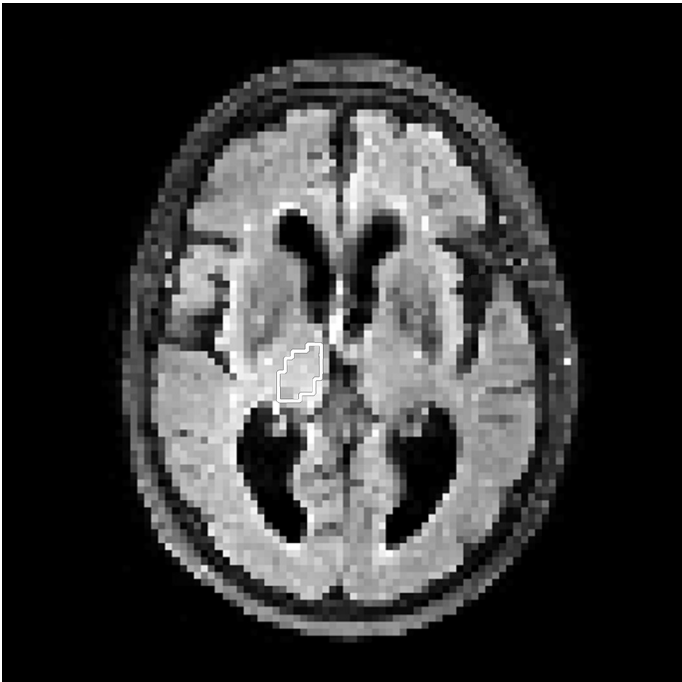
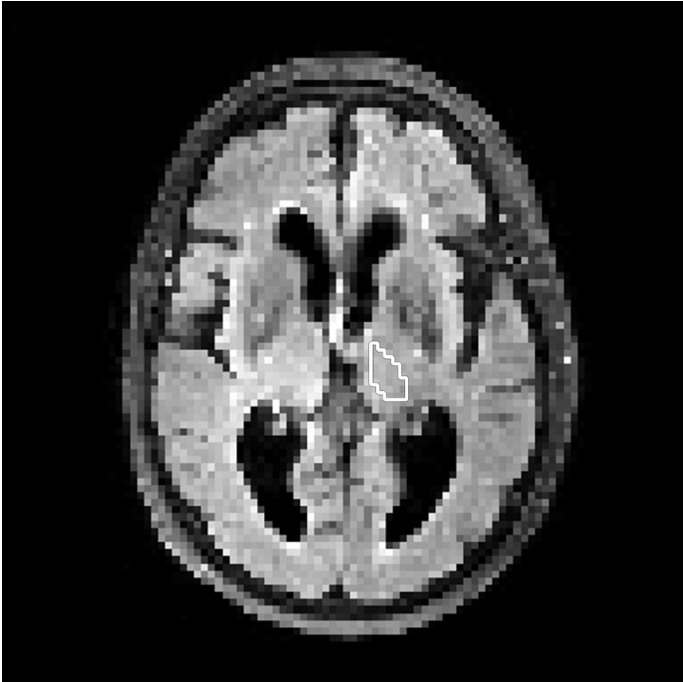
Supplementary motor area

Measured on two slices.



Thalamus right and left

Measured on each side on two slices, with the superior slice at the level of the foramina of Monro.



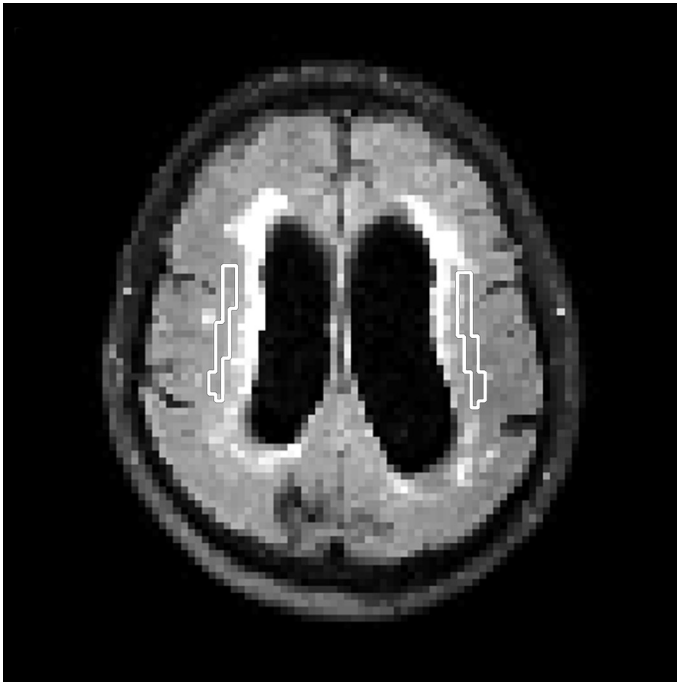
Frontal white matter

Measured on two slices, with the ROIs drawn 5–10 mm anterior to the frontal horns at the level of the cella media. Care was taken to avoid ventricles in the ROIs.



Lateral white matter

Measured on both sides as two oblong ROIs in the white matter 5–10 mm lateral to the cella media of the lateral ventricles on two slices.



Superior white matter

Measured on both sides as two rectangular ROIs on two slices. The inferior ROI was at the level of the first slice above the lateral ventricles without visible CSF.

