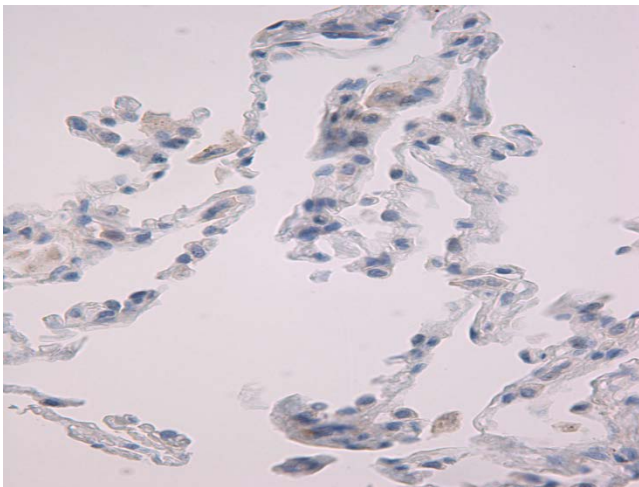


Figure 1S: Normal lung tissue

A: Dicer



B: Drosha

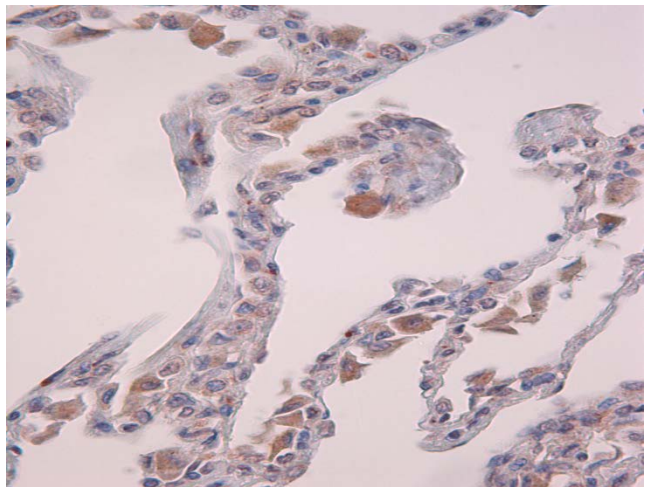


Figure S2 Immunohistochemical (IHC) staining of Dicer in NSCLC tissues, representing (A) negative staining, (B) weak staining, (C) intermediate staining, and (D) strong staining. Dicer is found primarily in cytoplasm, see brown staining.

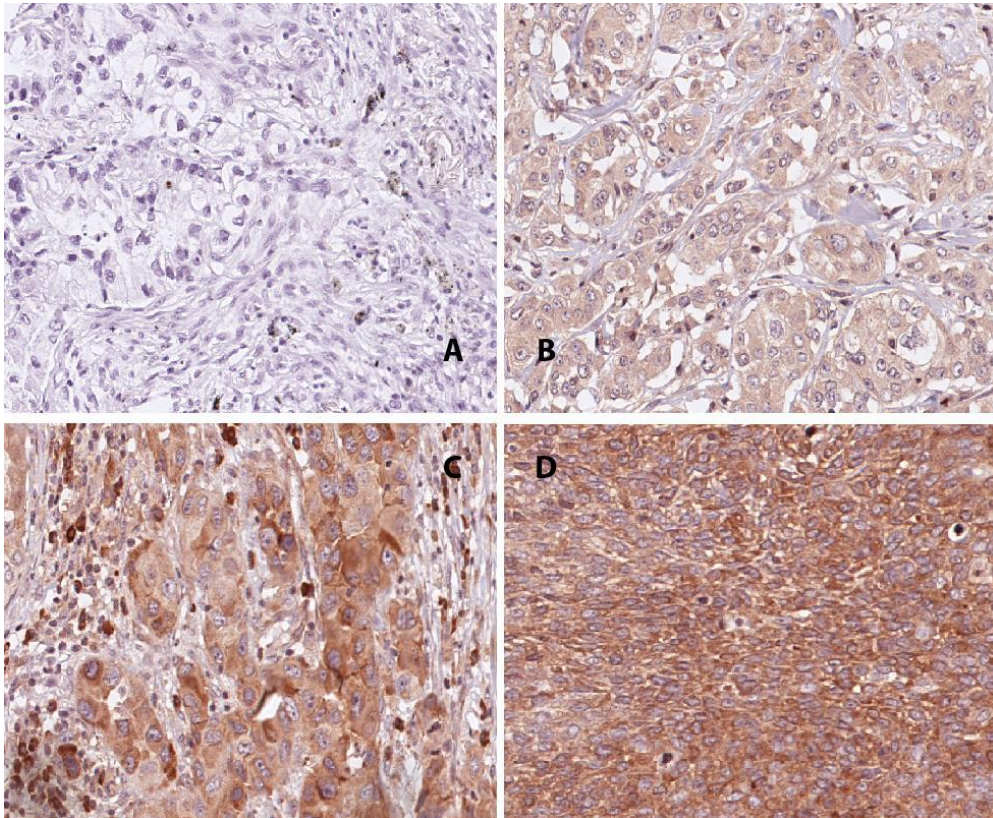


Figure S3 Immunohistochemical (IHC) staining of Drosha in NSCLC tissues, representing (A) negative staining, (B) weak staining, (C) intermediate staining, and (D) strong staining. Drosha is primarily found in the nuclei, see brown staining.

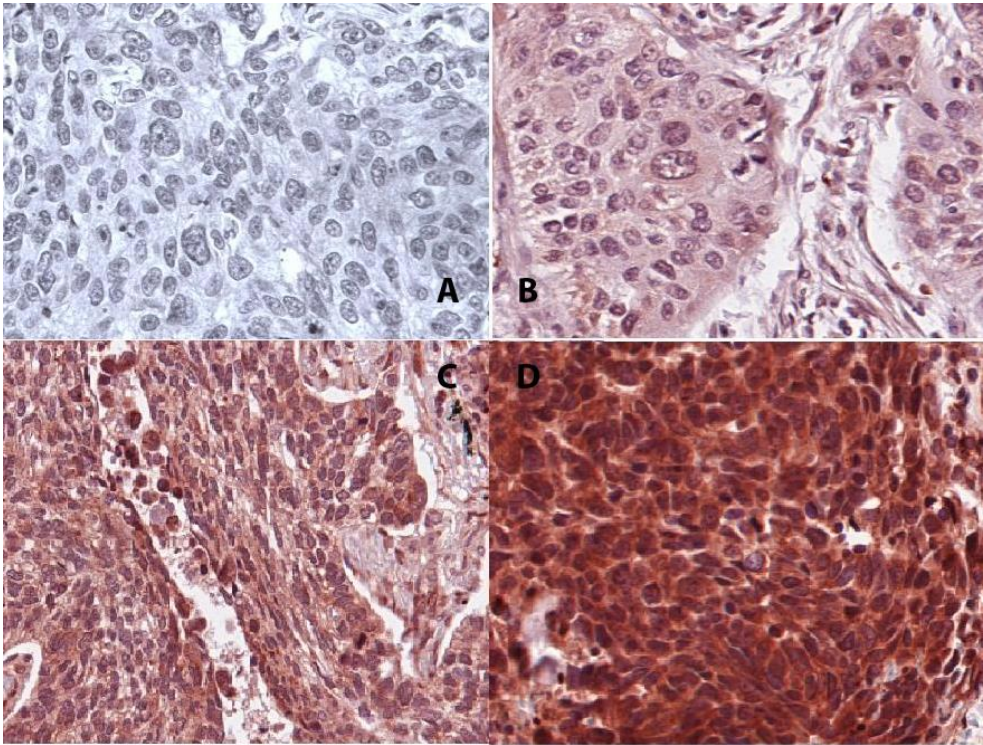


Figure S4 Correlation between Dicer and Drosha expression in the total patient material.

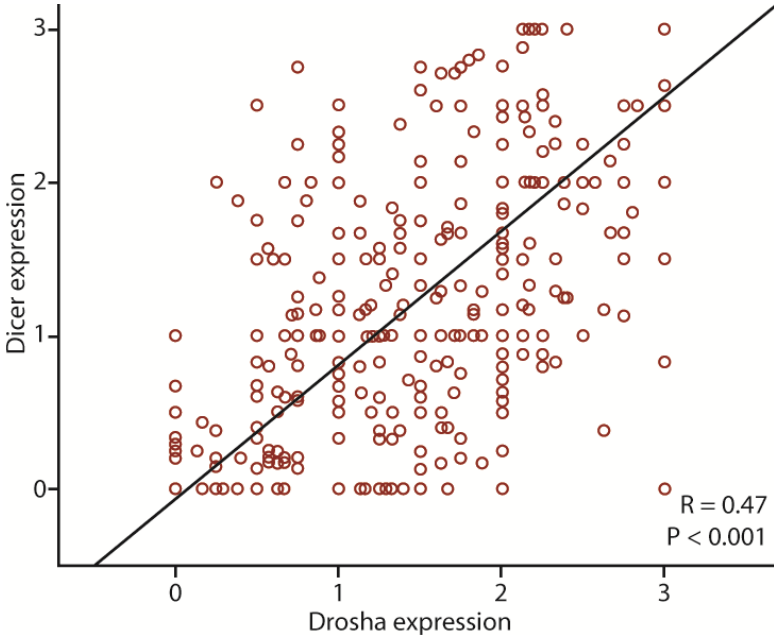


Figure S5: Proportionality of the hazards

