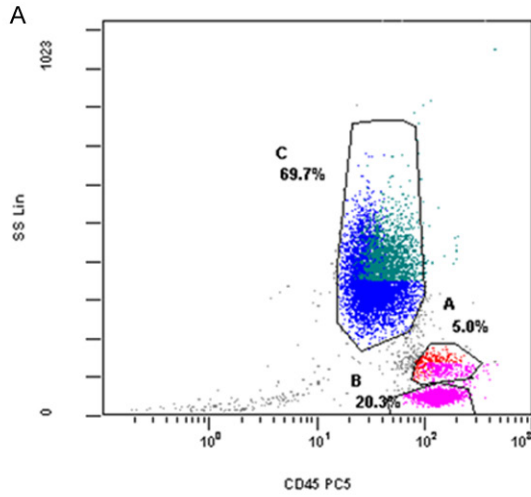
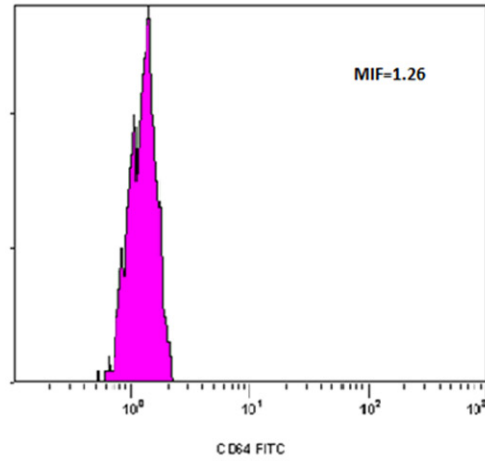
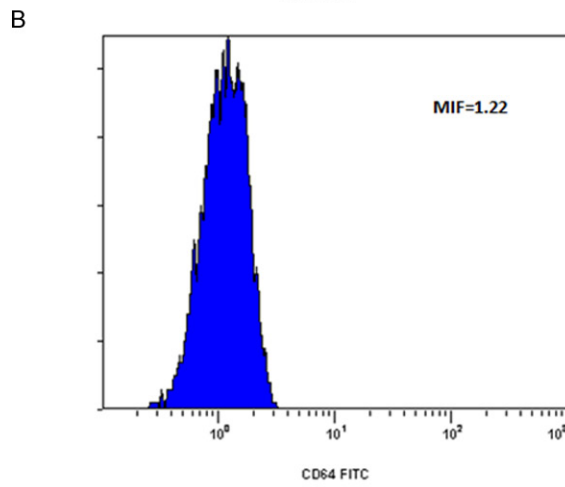


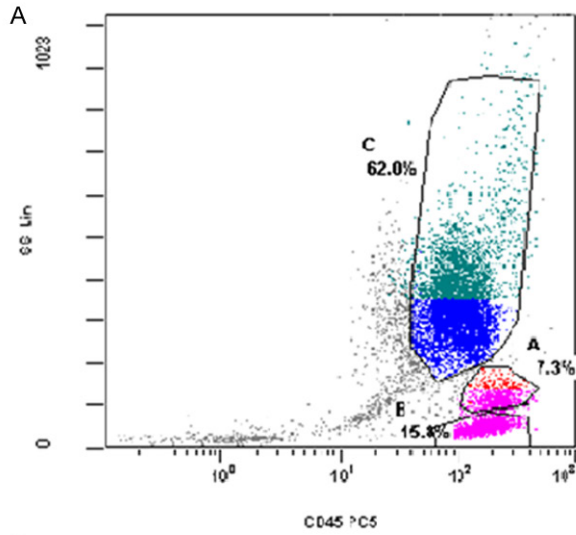
Neutrophil CD64 expression in ICU



Supplementary Figure 1. The level of CD64 expression in PBMC of a representative healthy control. The level of CD64 expression is determined by the mean fluorescence intensity (MFI) found on granulocytes (gated within population C) divided by the MFI found on lymphocytes (gated within populations A and B). Values less than 1 indicate normal levels of CD64 expression. In this healthy control, the MIF of granulocytes/the MIF of lymphocytes (1.22/1.26) is 0.97, which is within the normal range. The y axis in A indicates granularity. The y axis in B indicates % Max fluorescence.



Neutrophil CD64 expression in ICU



Supplementary Figure 2. The level of CD64 expression in PBMC of a representative ICU patient. The level of CD64 expression is determined by the mean fluorescence intensity (MFI) found on granulocytes (gated within population C) divided by the MFI found on lymphocytes (gated within populations A and B). Values less than 1 indicate normal levels of CD64 expression. In this ICU patient, the MIF of granulocytes/the MIF of lymphocytes (12.5/1.96) is 6.38, which is above the normal range. The y axis in A indicates granularity. The y axis in B indicates % Max fluorescence.

