

Tertiary lymphoid structures and immune cell infiltration in Merkel cell carcinomas

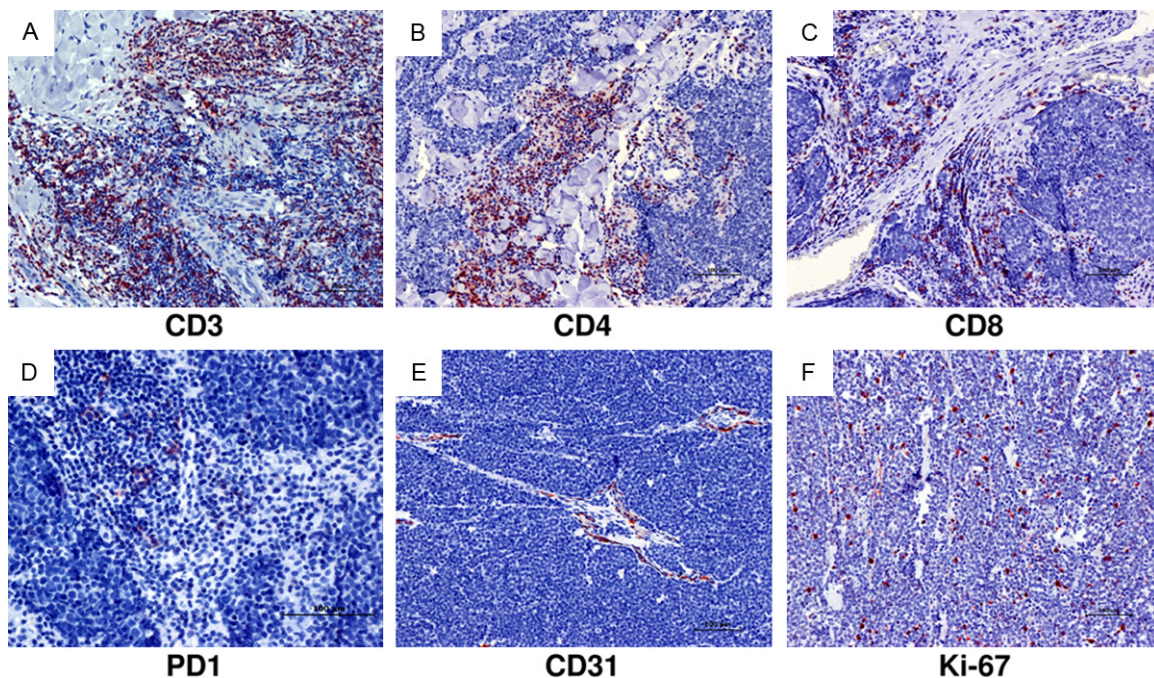


Figure S1. Exemplary immunohistochemical stainings of MCCs for (A) CD3, (B) CD4, (C) CD8, (D) PD-1, (E) CD31, (F) Ki67.

Table S1. Immune cell infiltration in MCCs

	Mean (SD)	Median (IQR 25, 75)	Min-Max
CD3 [cells/mm ²]	135 (393)	16 (6, 72)	0-1764
CD4 [cells/mm ²]	135 (482)	18 (0, 53)	0-2175
CD8 [cells/mm ²]	172 (302)	25 (6, 253)	0-1188
CD68 [cells/mm ²]	182 (121)	137 (109, 232)	16-534
CD31 [cells/mm ²]	47 (55)	29 (25, 45)	18-278
Ki67 [%]	14 (10)	13 (5, 20)	3-30