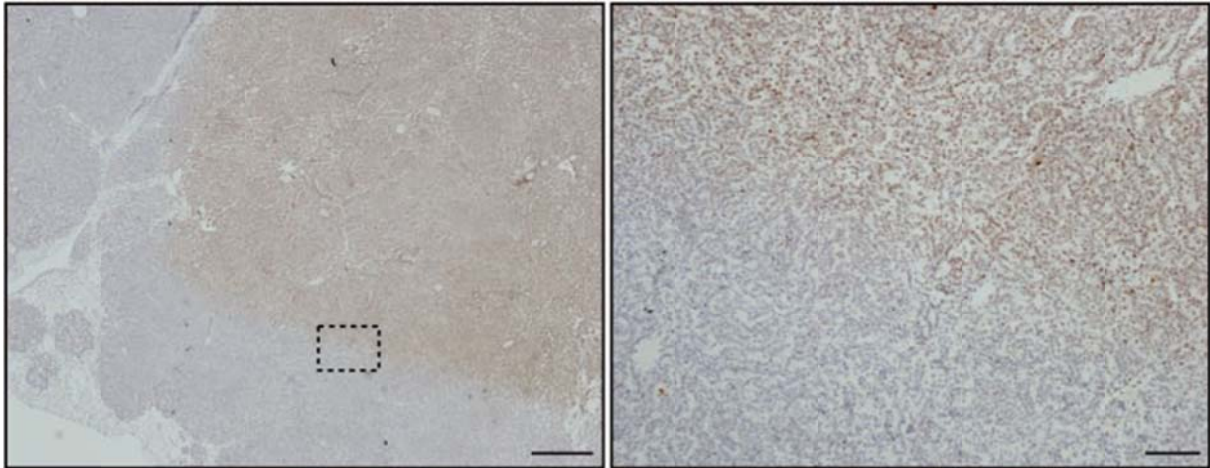


Supplementary Figure 1. Histopathological comparison of intranasal and intrathoracic induced NSCLC in *K*, *KL*, and *KP* mice. Representative H&E staining of lung adenocarcinomas from *K*, *KL*, and *KP* mice (3 mice per genotype) virally infected with intranasal AdCre (left panels) or intrathoracic AdCre (right panels). Black scale bar = 50 μ m. White scale bar = 25 μ m.



Supplementary Figure 2. Target validation after image-guided irradiation. Representative immunohistochemical analysis of solitary lung tumors from *K* mice (n=3). Lungs were harvested 30 minutes after a single dose of 8 Gy using the 5x5 mm collimator. Sections were stained with antibodies against γ -H2AX to visualize DNA double strand breaks induced by IR. Distinct differentiation between stained and unstained tumor tissue validates precise irradiation. Scale bar left panel = 500 μ m. Scale bar right panel = 100 μ m.