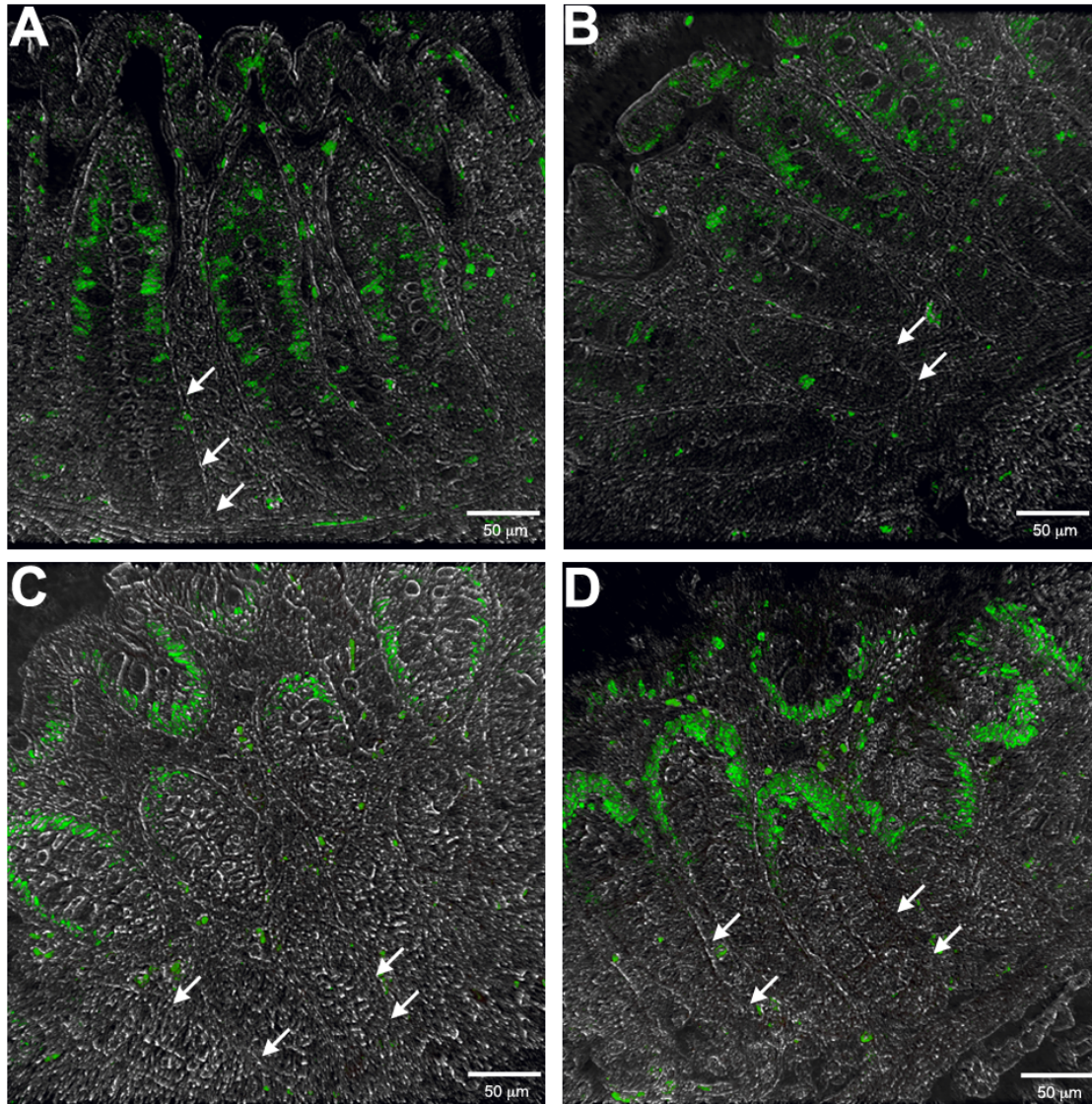


Supplemental Figure 1. Percentage of CD4⁺ T cells among lamina propria leukocytes (LPLs) in chronically SIV-infected macaques. The cells were first gated on singlets followed by lymphocytes, CD3 and then on CD3⁺CD4⁺ T cell subsets. Data was analyzed using Wilcoxon's rank sum test. The error bars represent standard error of mean CD4⁺ T cell percentage within each group. Triple asterisks (***) indicate statistical significance ($p < 0.001$) compared to uninfected controls.



Supplemental Figure 2. Colon: Differentiated enterocytes near the lumen and not crypt epithelial cells stain positive for cyclin dependent kinase inhibitor p21 in two different regions shown in a chronic-SIV infected (**A-B**) and uninfected control macaque (**C-D**). White arrows demarcate the lower outer boundaries of crypts. This suggests the absence of cell cycle arrest or cellular senescence in colonic crypt epithelial cells.