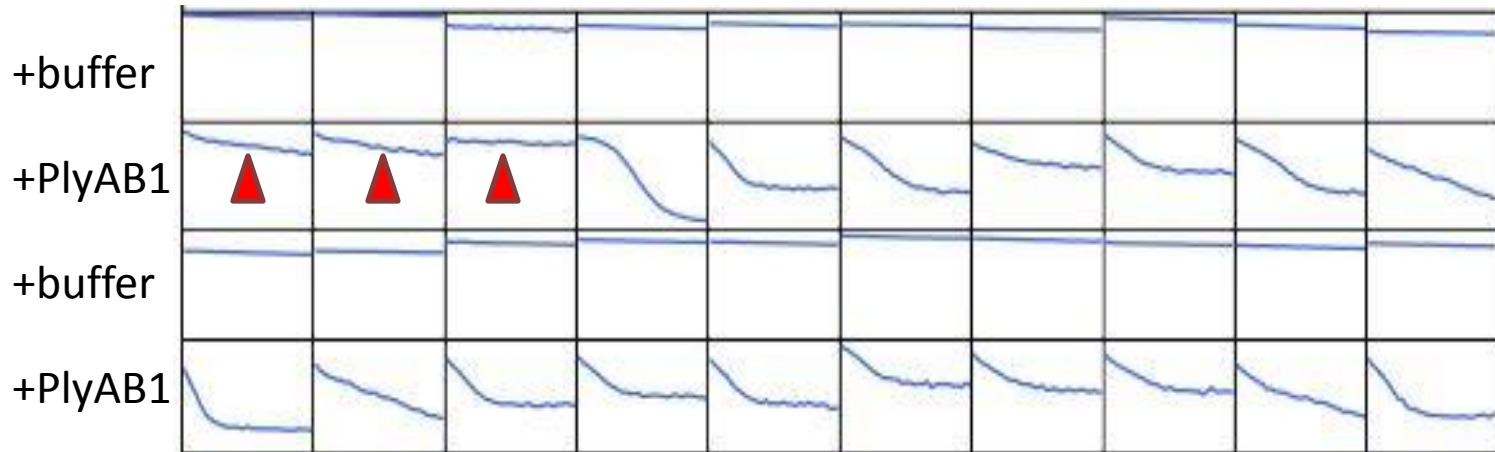
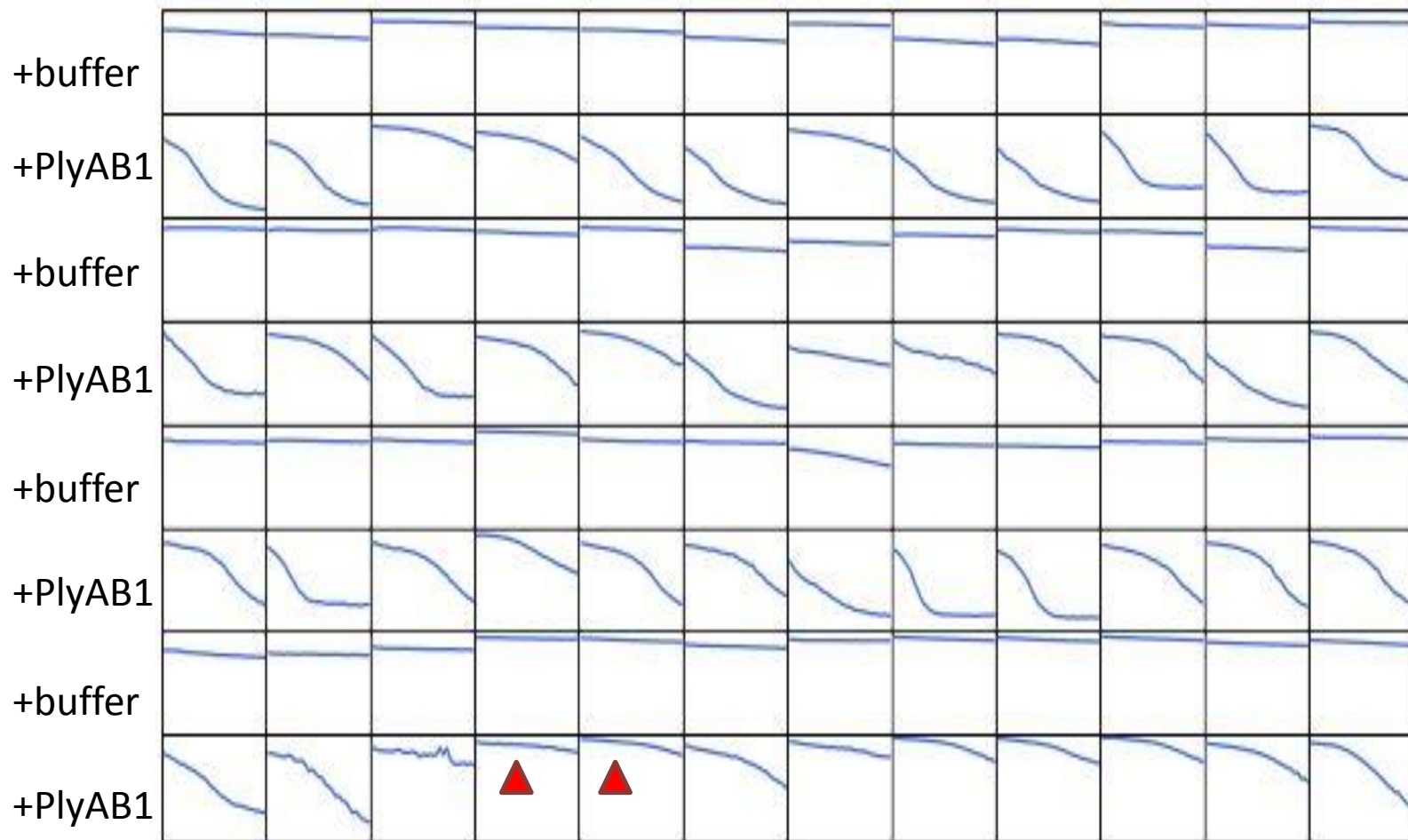


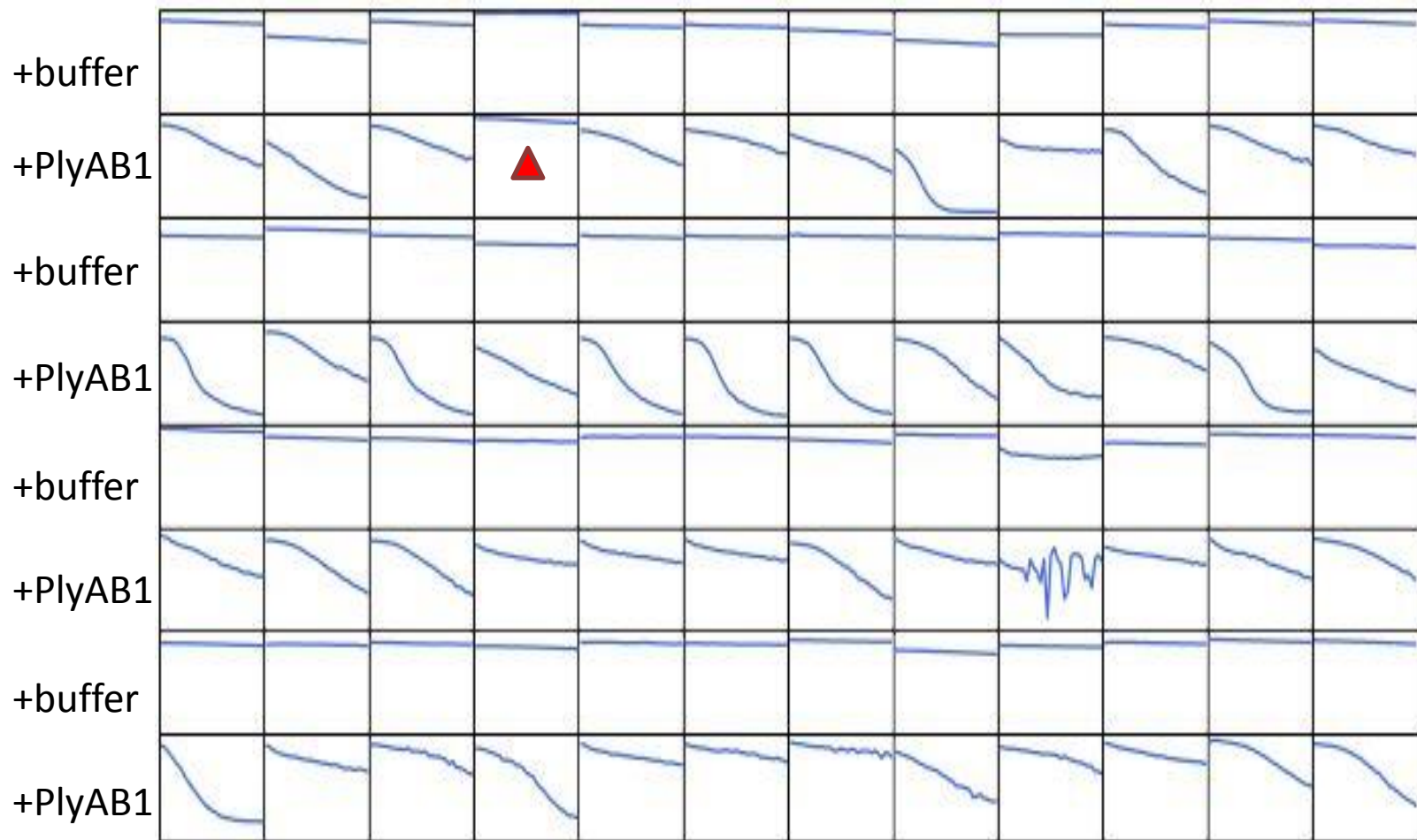
**Fig., S1 Lytic activity of PlyAB1 on clinical A . *Baumannii* isolates CQ1-CQ48**



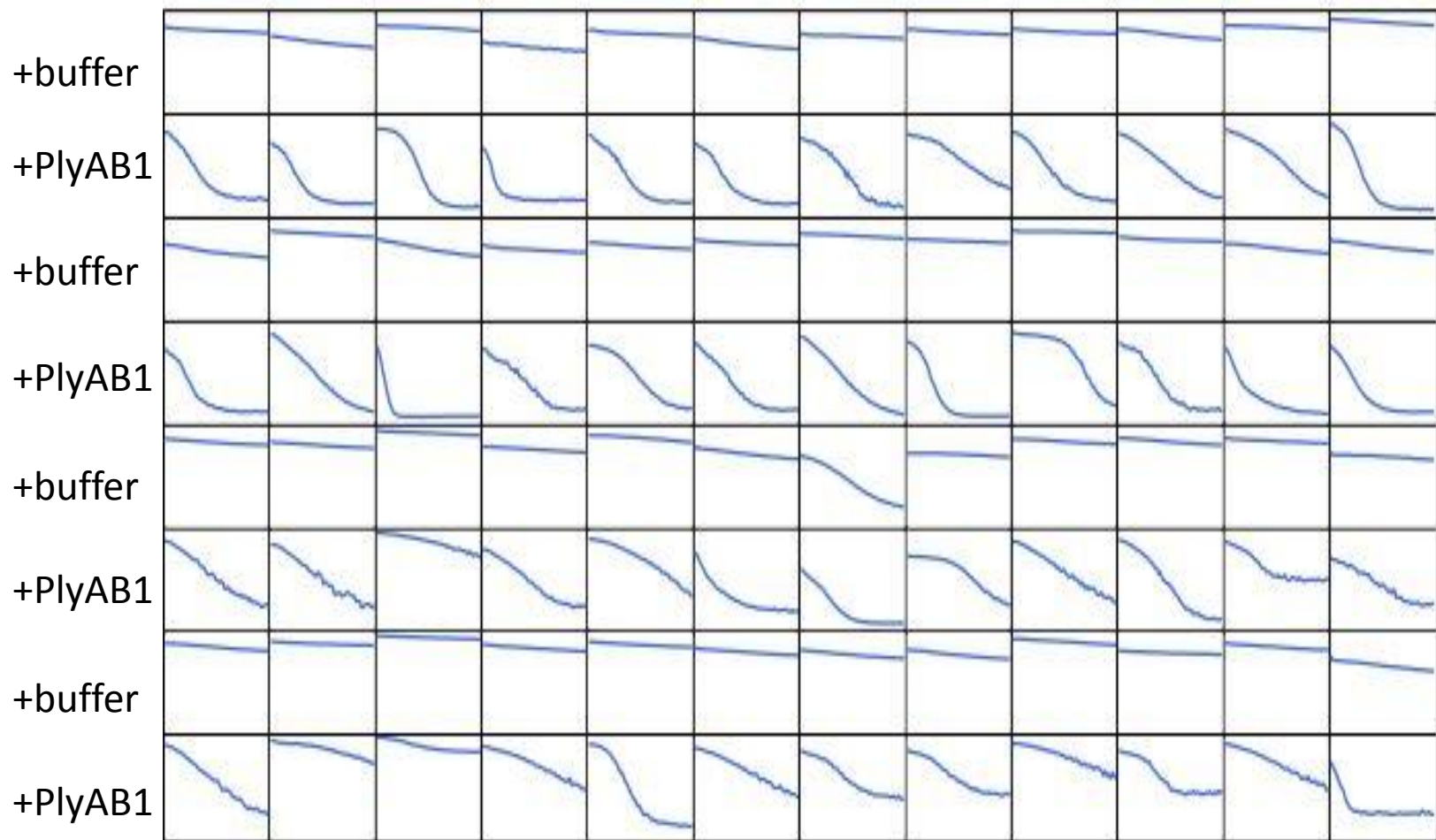
**Fig,. S2 Lytic activity of PlyAB1 on clinical *A . Baumannii* isolates CQ49-CQ68, red triangle indicates the PlyAB1-resistant strain.**



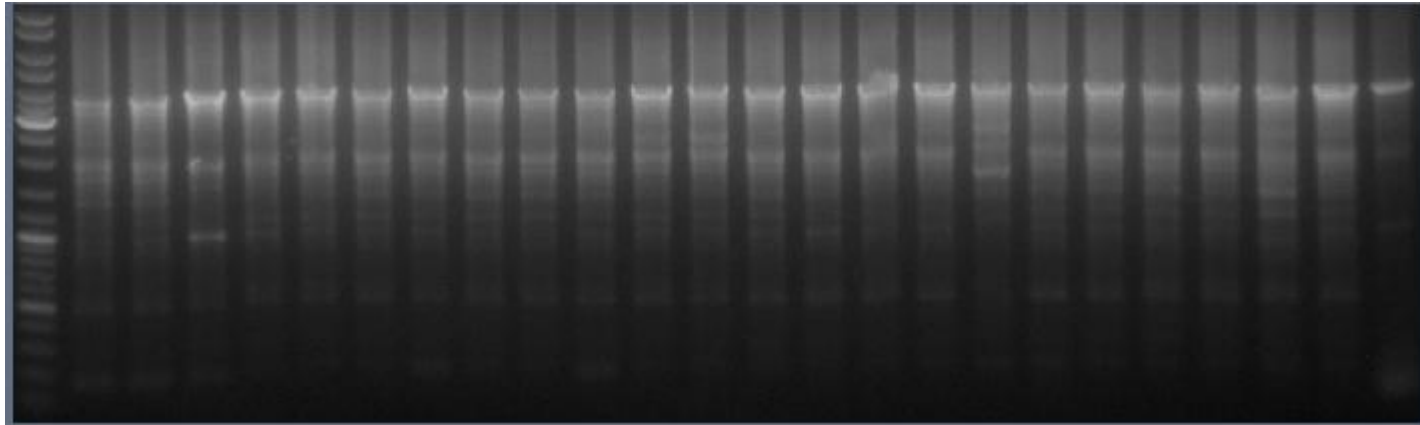
**Fig. S3 Lytic activity of PlyAB1 on clinical *A. Baumannii* isolates CQ69-CQ116, red triangle indicates the PlyAB1-resistant strain**



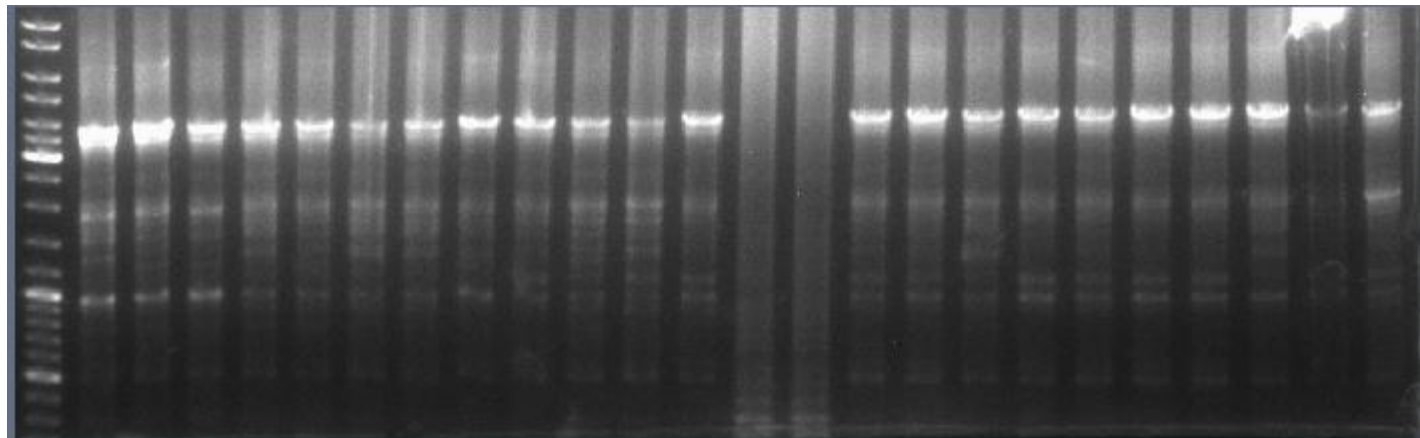
**Fig. S4 Lytic activity of PlyAB1 on clinical *A. Baumannii* isolates CQ117-CQ164 , red triangle indicates the PlyAB1-resistant strain**



**Fig. S5 Lytic activity of PlyAB1 on clinical *A. Baumannii* isolates CQ165-CQ212**



Rep-PCR AB01-AB24



Rep-PCR AB25-AB48

**Fig. S6 Rep-PCR of 48 *A. Baumannii* isolates**