

**Supplementary Information**

**for**

**CLCA2 as a Novel Immunohistochemical Marker for Differential Diagnosis of**

**Squamous Cell Carcinoma from Adenocarcinoma of the Lung**

**Supplementary Figures S1 and S2**

**Supplementary FIGURE S1:**

Positive and negative controls for CLCA2 immunohistochemistry

**Supplementary FIGURE S2:**

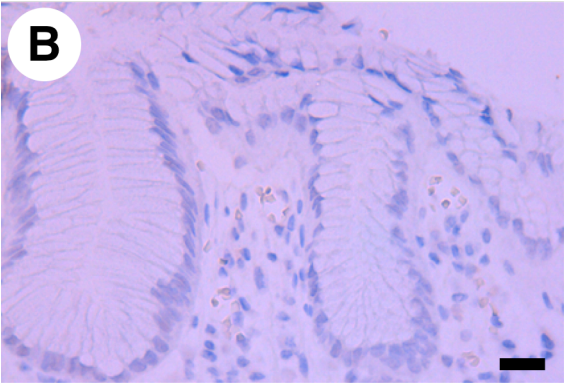
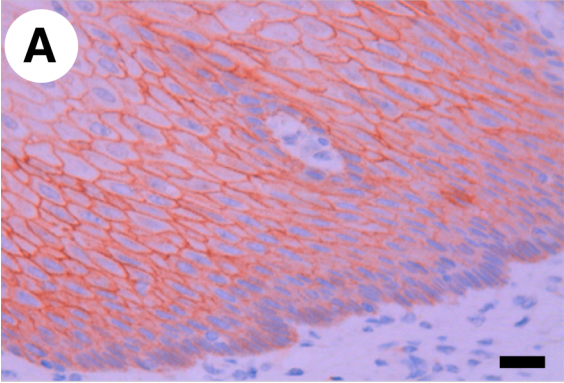
CLCA2 immunoreactivity in non-cancerous bronchial epithelium and alveolar epithelium of the lung

## LEGENDS FOR SUPPLEMENTARY FIGURES

**Supplementary FIGURE S1:** Positive and negative controls for CLCA2 immunohistochemistry. (A) Esophageal stratified squamous epithelium was used as positive control. (B) Gastric foveolar epithelium was used as negative control. Scale bar = 20  $\mu\text{m}$ .

**Supplementary FIGURE S2:** CLCA2 immunoreactivity in non-cancerous bronchial epithelium and alveolar epithelium of the lung. The bronchial epithelium (A) and alveolar epithelium (B) were negative to very weakly positive for CLCA2 expression. Scale bar = 20  $\mu\text{m}$ .

# Supplementary Figure 1



## Supplementary Figure 2

