

On the Analysis of a Repeated Measure Design in Genome-Wide Association Analysis

Figure S1. Q-Q plots for eight phenotypes with the results from longitudinal data analysis.

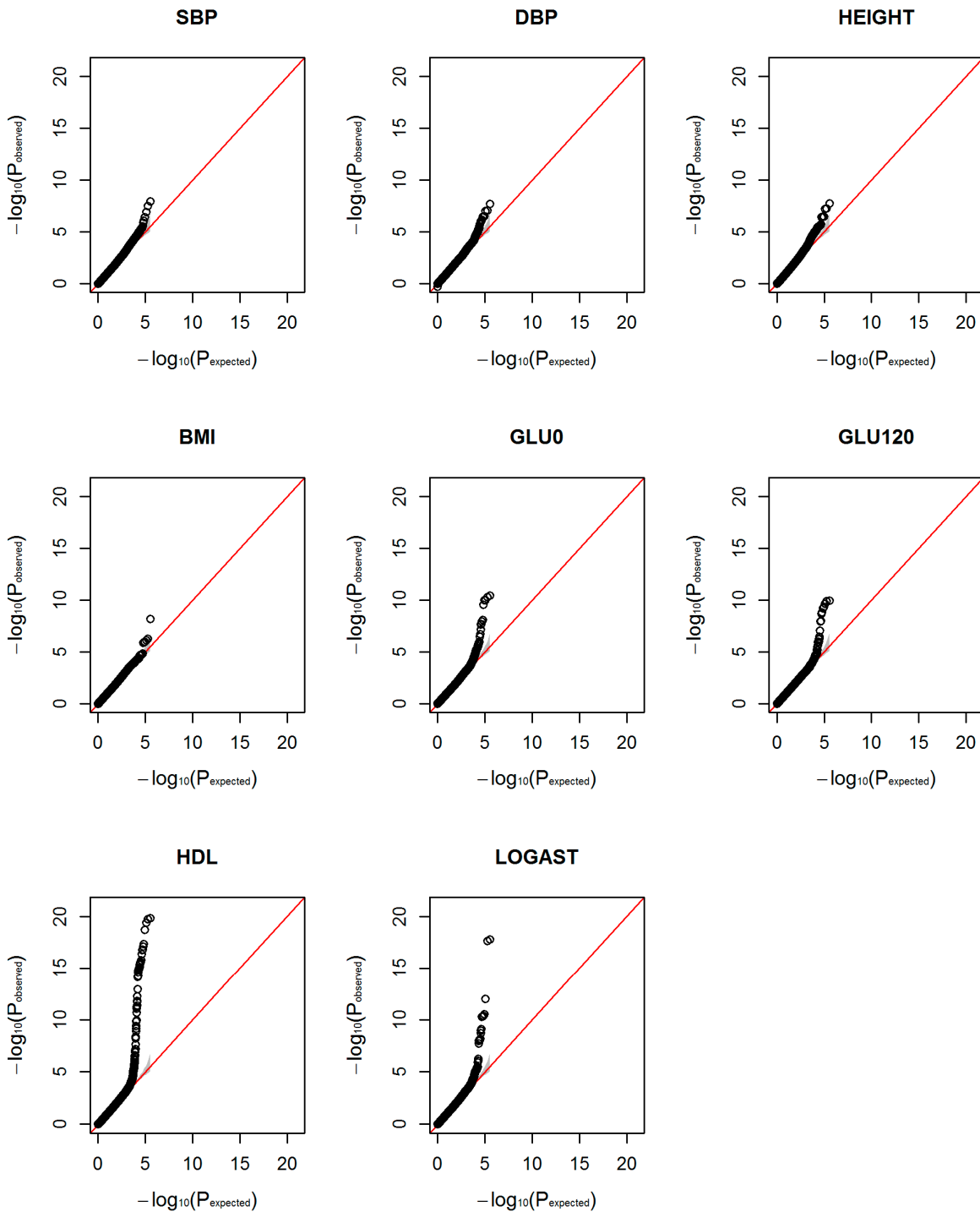


Figure S2. Q-Q plots for eight phenotypes with the results from cross-sectional data analysis.

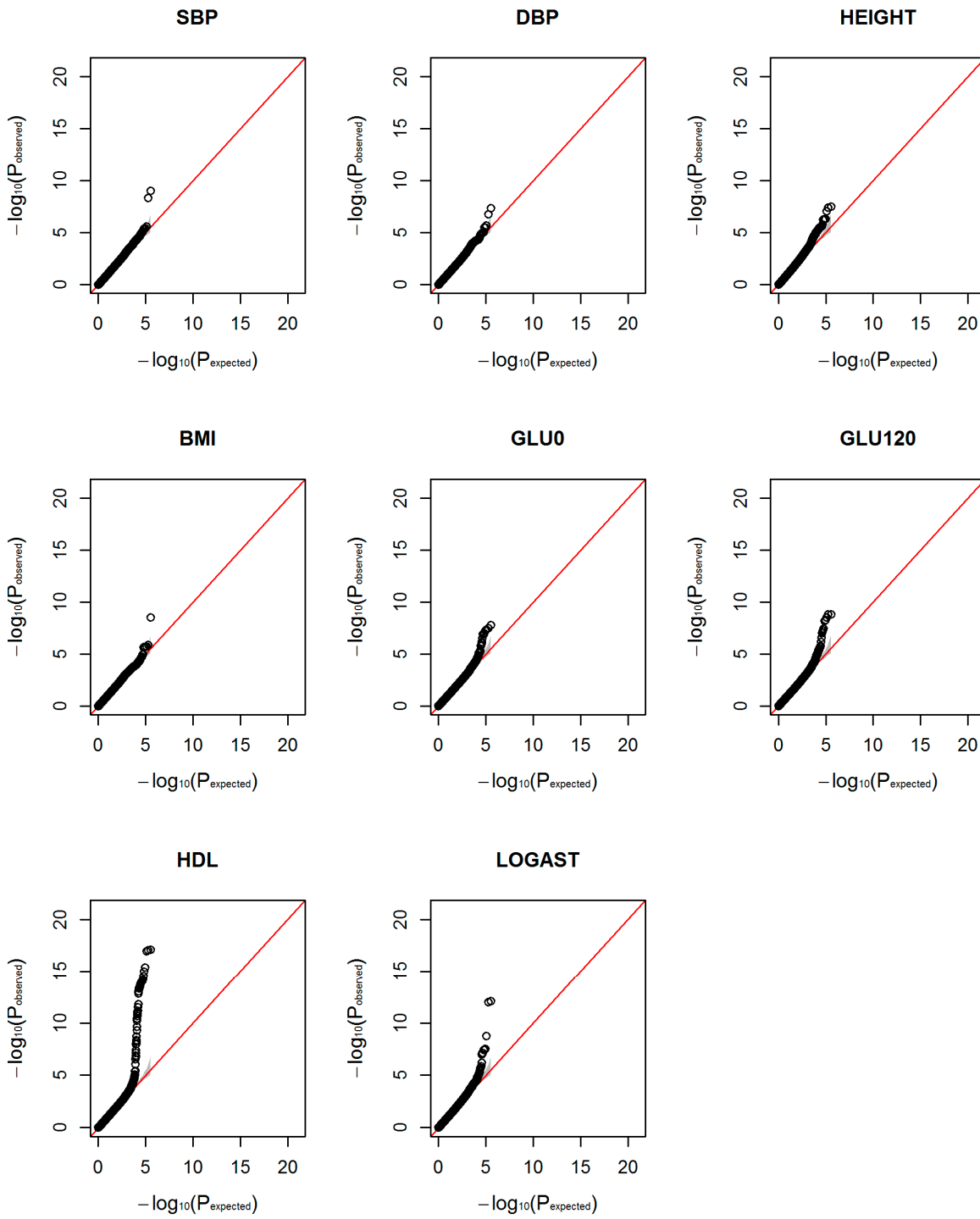


Figure S3. Manhattan plots for eight phenotypes with the results from longitudinal data analysis.

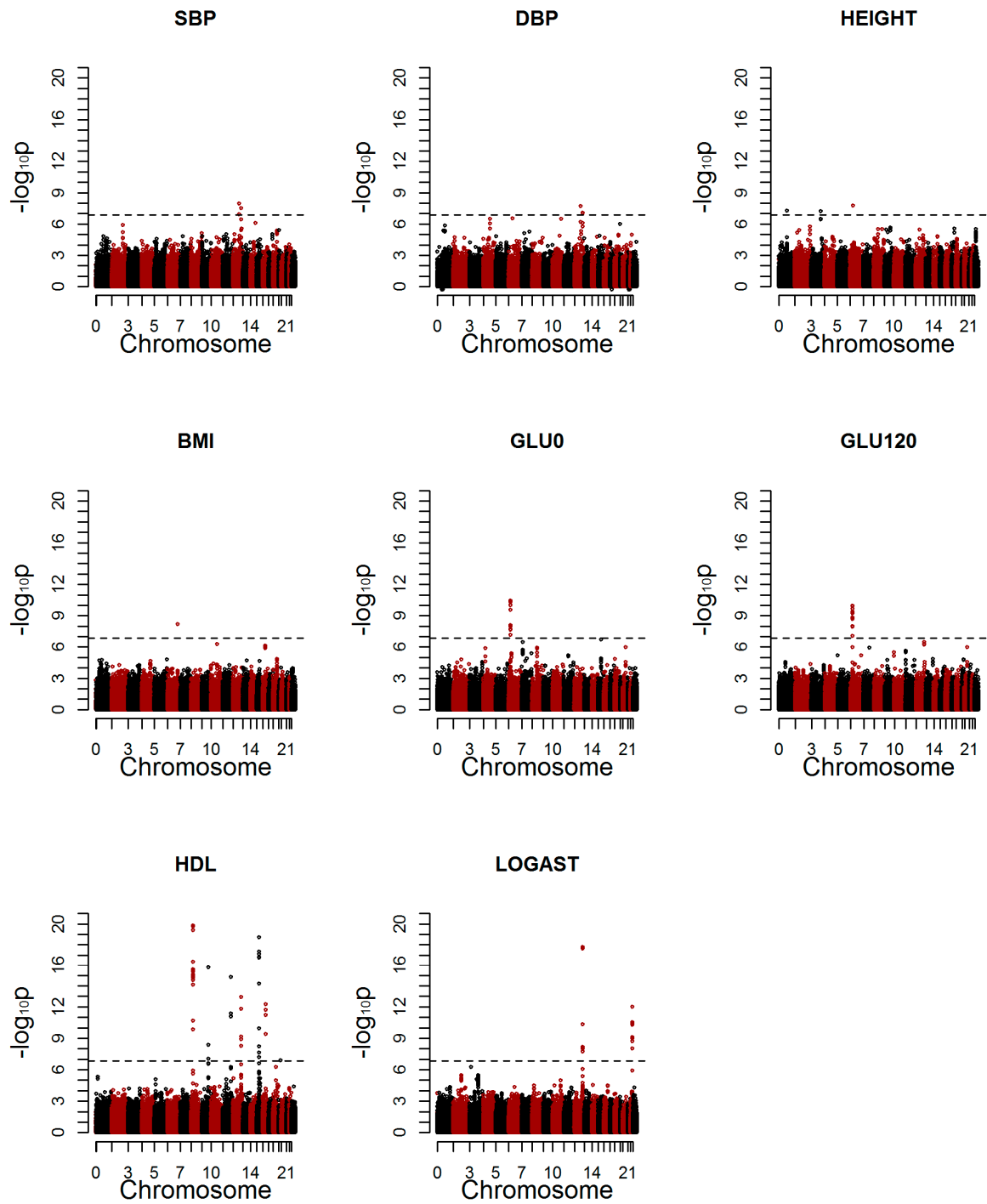


Figure S4. Manhattan plots for eight phenotypes with the results from cross-sectional data analysis.

