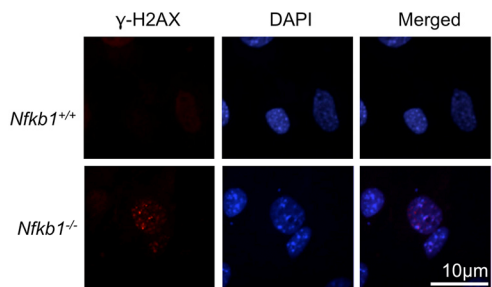
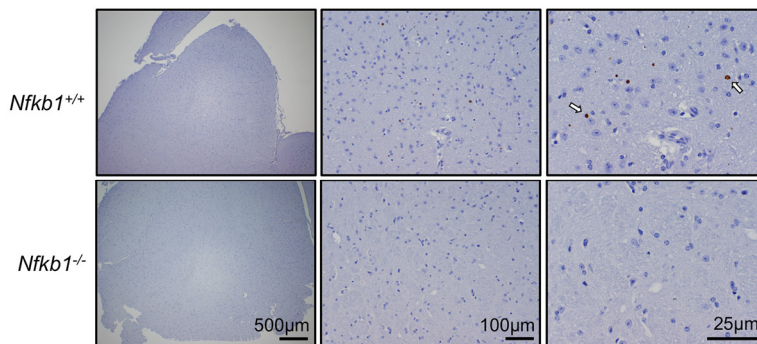


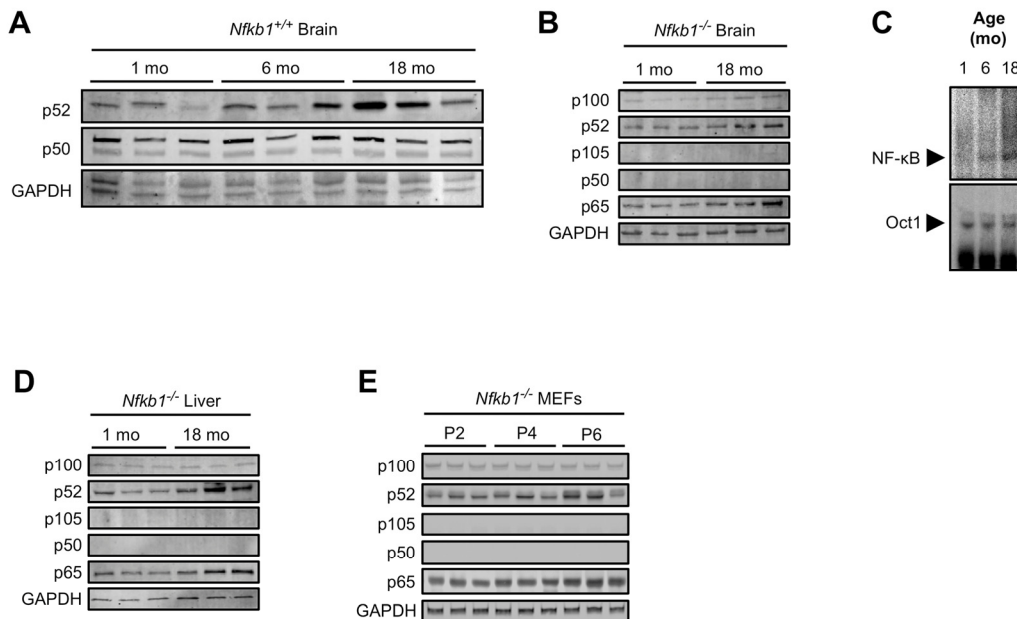
**SUPPLEMENTAL FIGURES**



**Figure S1. *Nfkb1*<sup>-/-</sup> MEFs accumulate more γH2AX foci than *Nfkb1*<sup>+/+</sup>.** Representative immunofluorescence images of γH2AX foci in primary *Nfkb1*<sup>+/+</sup> and *Nfkb1*<sup>-/-</sup> MEFs at passage 4.



**Figure S2. Loss of *Nfkb1*<sup>-/-</sup> results in decreased apoptosis in brain tissue *in vivo*.** Representative images of caspase 3 staining of brain tissue from 12-month old *Nfkb1*<sup>+/+</sup> and *Nfkb1*<sup>-/-</sup> mouse brains. Arrows represent caspase 3 positive cells. n=3 per group.



**Figure S3. p50 DNA binding declines with age.** (A and B) Immunoblots, using the indicated antibodies, of tissue lysates from (A) *Nfkb1*<sup>+/+</sup> and (B) *Nfkb1*<sup>-/-</sup> mouse brains at the specified age. (C) NF-κB and Oct1 EMSA in brains from 1-month old, 6-month old and 18-month old *Nfkb1*<sup>+/+</sup> mice. Oct1 EMSA demonstrates equal lysate loading. (D) Immunoblot using the indicated antibodies in lysates from *Nfkb1*<sup>-/-</sup> mouse liver at the specified age. (E) Immunoblot from *Nfkb1*<sup>-/-</sup> MEF lysates at passage 2, 4, and 6. Each lane represents an individual MEF isolate, harvested at different times.