

Supplementary Materials

A new MultiLocus VNTR Analysis tool for surveillance and local epidemiology of Bacterial Leaf Blight and Bacterial Leaf Streak of rice caused by *Xanthomonas oryzae*

L. Poulin¹, P. Grygiel², M. Magne², L. Gagnevin², L.M. Rodriguez-R¹, N. Forero Serna¹, S. Zhao¹, M. El Rafii¹, S. Dao³, C. Tekete³, O. Koita³, O. Pruvost², V. Verdier¹, C. Vernière^{2§}, R. Koebnik^{1§}

¹*UMR 186 Résistance des Plantes aux Bio-agresseurs, Institut de Recherche pour le Développement, Montpellier, France*

²*UMR PVBMT, Centre de Coopération Internationale en Recherche Agronomique pour le Développement, Saint-Pierre, La Réunion, France*

³*Laboratoire de Biologie Moléculaire Appliquée, Faculté des Sciences et Techniques (FAST), Université des Sciences Techniques et Technologie, Bamako, Mali*

§ These authors contributed equally to this work.

TABLE S1 *Xanthomonas oryzae* strains used in this study

Strain name	Year of isolation	Host species	Country of origin	Locality	References
<i>Xanthomonas oryzae</i> pv. <i>oryzicola</i> from Africa					
BAI5	2009	<i>Oryza sativa</i>	Burkina Faso	Haut-Bassins, Vallée du Kou	Wonni <i>et al.</i> , 2014
BAI6	2009	<i>O. sativa</i>	Burkina Faso	Haut-Bassins, Vallée du Kou	Wonni <i>et al.</i> , 2014
BAI7	2009	<i>Oryza longistaminata</i>	Burkina Faso	Centre-Est, Itenga	Wonni <i>et al.</i> , 2014
BAI8	2009	<i>O. longistaminata</i>	Burkina Faso	Centre-Est, Itenga	Wonni <i>et al.</i> , 2014
BAI9	2009	<i>O. longistaminata</i>	Burkina Faso	Centre-Est, Itenga	Wonni <i>et al.</i> , 2014
BAI10	2009	<i>O. longistaminata</i>	Burkina Faso	Centre-Est, Itenga	Wonni <i>et al.</i> , 2014
BAI11	2009	Wild rice	Burkina Faso	Centre-Est, Itenga	Wonni <i>et al.</i> , 2014
BAI12	2009	<i>O. sativa</i>	Burkina Faso	Centre-Est, Bagré	Wonni <i>et al.</i> , 2014
BAI13	2009	Weed	Burkina Faso	Centre-Est, Bagré	Wonni <i>et al.</i> , 2014
BAI14	2009	<i>O. sativa</i>	Burkina Faso	Centre-Est, Bagré	Wonni <i>et al.</i> , 2014
BAI15	2009	<i>O. sativa</i>	Burkina Faso	Centre-Est, Bagré	Wonni <i>et al.</i> , 2014
BAI16	2009	<i>O. sativa</i>	Burkina Faso	Centre-Est, Bagré	Wonni <i>et al.</i> , 2014
BAI17	2009	<i>Pennisetum</i> sp.	Burkina Faso	Centre-Est, Bagré	Wonni <i>et al.</i> , 2014
BAI18	2009	<i>O. sativa</i>	Burkina Faso	Centre-Est, Koulwooko	Wonni <i>et al.</i> , 2014
BAI20	2009	Weed	Burkina Faso	Cascades, Karfiguela	Wonni <i>et al.</i> , 2014
BAI21	2009	<i>O. sativa</i>	Burkina Faso	Cascades, Karfiguela	Wonni <i>et al.</i> , 2014
BAI22	2009	<i>O. longistaminata</i>	Burkina Faso	Cascades, Karfiguela	Wonni <i>et al.</i> , 2014
BAI34	2009	<i>O. sativa</i>	Burkina Faso	Cascades, Karfiguela	Wonni <i>et al.</i> , 2014
BAI36	2010	<i>O. sativa</i>	Burkina Faso	Boucle du Mouhoun, Niassan	Wonni <i>et al.</i> , 2014
BAI37	2010	<i>O. sativa</i>	Burkina Faso	Centre-Est, Bagré	Wonni <i>et al.</i> , 2014
BAI40	2010	<i>O. sativa</i>	Burkina Faso	Centre-Est, Bagré	Wonni <i>et al.</i> , 2014
BAI42	2010	<i>O. sativa</i>	Burkina Faso	Centre-Est, Bagré	Wonni <i>et al.</i> , 2014
BAI43	2010	<i>O. sativa</i>	Burkina Faso	Hauts-Bassins, Niéna-Donkélé	Wonni <i>et al.</i> , 2014
BAI44	2010	<i>O. sativa</i>	Burkina Faso	Hauts-Bassins, Niéna-Donkélé	Wonni <i>et al.</i> , 2014
BAI60	2011	<i>O. sativa</i>	Burkina Faso	Boucle du Mouhoun, Niassan	Wonni <i>et al.</i> , 2014
BAI62	2011	<i>Brachiaria lata</i>	Burkina Faso	Boucle du Mouhoun, Niassan	Wonni <i>et al.</i> , 2014
BAI64	2011	<i>O. sativa</i>	Burkina Faso	Boucle du Mouhoun, Niassan	Dr I. Wonni
BAI65	2011	<i>Paspalum vaginatum</i>	Burkina Faso	Boucle du Mouhoun, Niassan	Wonni <i>et al.</i> , 2014
BAI68	2011	<i>O. longistaminata</i>	Burkina Faso	Boucle du Mouhoun, Niassan	Wonni <i>et al.</i> , 2014
BAI69	2011	<i>O. longistaminata</i>	Burkina Faso	Cascades, Karfiguela	Wonni <i>et al.</i> , 2014
BAI71	2011	<i>O. sativa</i>	Burkina Faso	Cascades, Karfiguela	Dr I. Wonni
BAI76	2011	<i>O. sativa</i>	Burkina Faso	Cascades, Karfiguela	Wonni <i>et al.</i> , 2014
BAI81	2011	<i>O. sativa</i>	Burkina Faso	Cascades, Karfiguela	Dr I. Wonni
BAI82	2011	<i>O. sativa</i>	Burkina Faso	Cascades, Karfiguela	Wonni <i>et al.</i> , 2014
MAI3 (CFBP 7326)	2003	<i>O. sativa</i>	Mali	Office du Niger, Niono	Gonzalez <i>et al.</i> , 2007
MAI5 (CFBP 7328)	2003	<i>O. sativa</i>	Mali	Office du Niger, Niono	Gonzalez <i>et al.</i> , 2007
MAI6 (CFBP 7329)	2003	<i>O. sativa</i>	Mali	Office du Niger, Niono	Gonzalez <i>et al.</i> , 2007
MAI7 (CFBP 7334)	2003	<i>O. sativa</i>	Mali	Office du Niger, Niono	Gonzalez <i>et al.</i> , 2007
MAI8 (CFBP 7330)	2003	<i>O. sativa</i>	Mali	Office du Niger, Niono	Gonzalez <i>et al.</i> , 2007
MAI10 (CFBP 7331)	2003	<i>O. sativa</i>	Mali	Office du Niger, Niono	Gonzalez <i>et al.</i> , 2007
MAI11 (CFBP 7335)	2003	<i>O. sativa</i>	Mali	Office du Niger, Niono	Gonzalez <i>et al.</i> , 2007
MAI12	2003	<i>O. sativa</i>	Mali	Office du Niger, Niono	Gonzalez <i>et al.</i> , 2007
MAI13	2003	<i>O. sativa</i>	Mali	Office du Niger, Niono	Gonzalez <i>et al.</i> , 2007
MAI16	2009	<i>O. sativa</i>	Mali	Office du Niger, Molodo	Wonni <i>et al.</i> , 2014
MAI17	2009	<i>O. sativa</i>	Mali	Office du Niger, Kogoni	Wonni <i>et al.</i> , 2014

MAI18 (CFBP 7338)	2009	<i>O. longistaminata</i>	Mali	Office du Niger, Kogoni	Wonni <i>et al.</i> , 2014
MAI19	2009	<i>O. longistaminata</i>	Mali	Office du Niger, Kogoni	Wonni <i>et al.</i> , 2014
MAI20	2009	<i>O. longistaminata</i>	Mali	Office du Niger, Kogoni	Wonni <i>et al.</i> , 2014
MAI21	2009	<i>O. longistaminata</i>	Mali	Office du Niger, Kogoni	Wonni <i>et al.</i> , 2014
MAI22	2009	<i>Oryza barthii</i>	Mali	Office du Niger, Kogoni	Wonni <i>et al.</i> , 2014
MAI23	2009	<i>O. barthii</i>	Mali	Office du Niger, Kogoni	Wonni <i>et al.</i> , 2014
MAI24	2009	<i>O. barthii</i>	Mali	Office du Niger, Kogoni	Wonni <i>et al.</i> , 2014
MAI25	2009	<i>O. longistaminata</i>	Mali	Office du Niger, Kogoni	Wonni <i>et al.</i> , 2014
MAI26	2009	<i>O. sativa</i>	Mali	Office du Niger, Macina	Wonni <i>et al.</i> , 2014
MAI29	2009	<i>O. sativa</i>	Mali	Office du Niger, Macina	Wonni <i>et al.</i> , 2014
MAI30	2009	<i>O. sativa</i>	Mali	Office du Niger, Macina	Wonni <i>et al.</i> , 2014
MAI32	2009	<i>O. sativa</i>	Mali	Office du Niger, Macina	Wonni <i>et al.</i> , 2014
MAI34	2009	<i>O. sativa</i>	Mali	Office du Niger, Macina	Wonni <i>et al.</i> , 2014
MAI35	2009	<i>O. sativa</i>	Mali	Office du Niger, Macina	Wonni <i>et al.</i> , 2014
MAI36	2009	<i>O. barthii</i>	Mali	Office du Niger, Ndebougou	Wonni <i>et al.</i> , 2014
MAI40	2009	<i>O. sativa</i>	Mali	Sikasso, Sélingué	Wonni <i>et al.</i> , 2014
MAI42	2009	<i>O. sativa</i>	Mali	Sikasso, Sélingué	Wonni <i>et al.</i> , 2014
MAI43	2009	<i>O. sativa</i>	Mali	Sikasso, Sélingué	Wonni <i>et al.</i> , 2014
MAI44	2009	<i>O. sativa</i>	Mali	Sikasso, Sélingué	Wonni <i>et al.</i> , 2014
MAI45	2009	<i>O. sativa</i>	Mali	Sikasso, Sélingué	Wonni <i>et al.</i> , 2014
MAI46	2009	<i>O. sativa</i>	Mali	Koulikoro, Baguineda	Wonni <i>et al.</i> , 2014
MAI48	2012	<i>O. sativa</i>	Mali	Koulikoro, Baguineda	LBMA
MAI50	2012	<i>O. sativa</i>	Mali	nd	LBMA
MAI57	2013	<i>O. sativa</i>	Mali	nd	LBMA
MAI58	2013	<i>O. sativa</i>	Mali	nd	LBMA
<i>Xanthomonas oryzae</i> pv. <i>oryzicola</i> from Asia					
Xoc-china	nd	<i>O. sativa</i>	China	nd	Dr J.E. Leach
AH-CF-1	2011	nd	China	Anhui, Zhipu	Dr S. Zhao
AH-CF-3	2011	nd	China	Anhui, Zhipu	Dr S. Zhao
AH-CF-5	2011	nd	China	Anhui, Zhipu	Dr S. Zhao
AH-DY-1	2011	<i>O. sativa</i>	China	Anhui, Beiyao	Dr S. Zhao
AH-DY-5	2011	<i>O. sativa</i>	China	Anhui, Qiaozhang	Dr S. Zhao
AH-MG-1	2011	nd	China	Anhui, Caigang	Dr S. Zhao
AH-MG-4	2011	<i>O. sativa</i>	China	Anhui, Shishuo	Dr S. Zhao
AH-MG-6	2011	<i>O. sativa</i>	China	Anhui, Shishuo	Dr S. Zhao
AH-MG-7	2011	nd	China	Anhui, Mingguang	Dr S. Zhao
AH-YS-4	2011	<i>O. sativa</i>	China	Anhui, Huangliangou	Dr S. Zhao
AH-YS-6	2011	<i>O. sativa</i>	China	Anhui, Huangliangou	Dr S. Zhao
FJ-SW-1	2011	<i>O. sativa</i>	China	Zhejiang, Shuikouzhai	Dr S. Zhao
FJ-SW-2	2011	<i>O. sativa</i>	China	Zhejiang, Shuikouzhai	Dr S. Zhao
FJ-SW-3	2011	<i>O. sativa</i>	China	Zhejiang, Shuikouzhai	Dr S. Zhao
FJ-SW-5	2011	<i>O. sativa</i>	China	Zhejiang, Shuikouzhai	Dr S. Zhao
GD-CZ-1	2011	<i>O. sativa</i>	China	Guangdong, Lixi	Dr S. Zhao
GX-LC-1	2011	nd	China	Guangxi, Luchuang	Dr S. Zhao
GX-LC-3	2011	nd	China	Guangxi, Luchuang	Dr S. Zhao
HN-DA-1	2011	<i>O. sativa</i>	China	Hainan, Jixiu	Dr S. Zhao
HN-DZ-5	2011	nd	China	Hainan, Tongtan	Dr S. Zhao
HN-DZ-10	2011	<i>O. sativa</i>	China	Hainan, Wuji	Dr S. Zhao
HN-DZ-13	2011	<i>O. sativa</i>	China	Hainan, Wuji	Dr S. Zhao
HN-DZ-16	2011	<i>O. sativa</i>	China	Hainan, Wuji	Dr S. Zhao
HN-WC-13	2011	<i>O. sativa</i>	China	Hainan, Mingbai	Dr S. Zhao
ZJ-PY-2	2011	<i>O. sativa</i>	China	Zhejiang, Jiafeng	Dr S. Zhao

FJ07	2008	<i>O. sativa</i>	China	Fujian	Dr S. Zhao
FJ11	2008	<i>O. sativa</i>	China	Fujian	Zhao <i>et al.</i> , 2012
FJ12	2008	<i>O. sativa</i>	China	Fujian	Zhao <i>et al.</i> , 2012
FJ13	2008	<i>O. sativa</i>	China	Fujian	Zhao <i>et al.</i> , 2012
FJ15	2008	<i>O. sativa</i>	China	Fujian	Zhao <i>et al.</i> , 2012
GX01	2005	<i>O. sativa</i>	China	Guangxi	Zhao <i>et al.</i> , 2012
CFBP 2286 (LMG 797)	1964	<i>O. sativa</i>	Malaysia	nd	CFBP
CFBP 2287 (NCPPB 2921)	1973	<i>O. sativa</i>	Malaysia	nd	CFBP
BLS28	nd	<i>O. sativa</i>	Philippines	nd	Dr C. Vera Cruz
BLS30	1978	<i>O. sativa</i>	Philippines	College, Laguna	Dr C. Vera Cruz
BLS53	1981	<i>O. sativa</i>	Philippines	Polangui, Albay	Dr C. Vera Cruz
BLS54	1981	<i>O. sativa</i>	Philippines	Solana, Cagayan	Dr C. Vera Cruz
BLS55	1981	<i>O. sativa</i>	Philippines	College, Laguna	Dr C. Vera Cruz
BLS58	1981	<i>O. sativa</i>	Philippines	College, Laguna	Dr C. Vera Cruz
BLS66	1981	<i>O. sativa</i>	Philippines	Barutac, Iloilo	Dr C. Vera Cruz
BLS94	1982	<i>O. sativa</i>	Philippines	College, Laguna	Dr C. Vera Cruz
BLS98	1982	<i>O. sativa</i>	Philippines	Nueva Ecija	Dr C. Vera Cruz
BLS99	1982	<i>O. sativa</i>	Philippines	Sum-Ag, Bacolod	Dr C. Vera Cruz
BLS101	1982	<i>O. sativa</i>	Philippines	Solana, Cagayan	Dr C. Vera Cruz
BLS103	1983	<i>O. sativa</i>	Philippines	Baguio, Benguet	Dr C. Vera Cruz
BLS105	1984	<i>O. sativa</i>	Philippines	College, Laguna	Dr C. Vera Cruz
BLS107	1985	<i>O. sativa</i>	Philippines	Polangui, Albay	Dr C. Vera Cruz
BLS112	1986	<i>O. sativa</i>	Philippines	Mintal, Davao	Dr C. Vera Cruz
BLS125	1987	<i>O. sativa</i>	Philippines	College, Laguna	Dr C. Vera Cruz
BLS159	1988	<i>O. sativa</i>	Philippines	College, Laguna	Dr C. Vera Cruz
BLS176	1989	<i>O. sativa</i>	Philippines	North Cotobato	Dr C. Vera Cruz
BLS256 (CFBP 7109)	1984	<i>O. sativa</i>	Philippines	Los Baños, Laguna	Dr C. Vera Cruz
BLS279	1984	<i>O. sativa</i>	Philippines	College, Laguna	Dr C. Vera Cruz
BLS285	1934	<i>O. sativa</i>	Philippines	College, Laguna	Dr C. Vera Cruz
BLS289	1984	<i>O. sativa</i>	Philippines	Camarines Norte	Dr C. Vera Cruz
BLS292	1984	<i>O. sativa</i>	Philippines	Palo, Leyte	Dr C. Vera Cruz
BLS295	1984	<i>O. sativa</i>	Philippines	North Cotobato	Dr C. Vera Cruz
BLS303	nd	<i>O. sativa</i>	Philippines	nd	Dr C. Vera Cruz
BLS305	1985	<i>O. sativa</i>	Philippines	San Dionisio, Iloilo	Dr C. Vera Cruz
BLS333	1985	<i>O. sativa</i>	Philippines	College, Laguna	Dr C. Vera Cruz
BLS354	1983	<i>O. sativa</i>	Philippines	Cabatuan, Isabela	Dr C. Vera Cruz
BLS368	1921	<i>O. sativa</i>	Philippines	Tarlac	Dr C. Vera Cruz
BLS377	1921	<i>O. sativa</i>	Philippines	Guimba, Nueva	Dr C. Vera Cruz
BLS404	1994	<i>O. sativa</i>	Philippines	La Paz, Tarlac	Dr C. Vera Cruz
BLS415	1994	<i>O. sativa</i>	Philippines	La Paz, Tarlac	Dr C. Vera Cruz
BLS417	1994	<i>O. sativa</i>	Philippines	La Paz, Tarlac	Dr C. Vera Cruz
BLS418	1994	<i>O. sativa</i>	Philippines	La Paz, Tarlac	Dr C. Vera Cruz
BLS419	1994	<i>O. sativa</i>	Philippines	La Paz, Tarlac	Dr C. Vera Cruz
BLS420	1994	<i>O. sativa</i>	Philippines	La Paz, Tarlac	Dr C. Vera Cruz
BLS423	1994	<i>O. sativa</i>	Philippines	La Paz, Tarlac	Dr C. Vera Cruz
BLS500	2009	<i>O. sativa</i>	Philippines	nd	Dr C. Vera Cruz
BLS501	2009	<i>O. sativa</i>	Philippines	nd	Dr C. Vera Cruz
BLS502	2009	<i>O. sativa</i>	Philippines	nd	Dr C. Vera Cruz
BLS503	2009	<i>O. sativa</i>	Philippines	nd	Dr C. Vera Cruz
BLS504	2009	<i>O. sativa</i>	Philippines	nd	Dr C. Vera Cruz
BLS505	2009	<i>O. sativa</i>	Philippines	nd	Dr C. Vera Cruz

BLS506	2009	<i>O. sativa</i>	Philippines	nd	Dr C. Vera Cruz
BLS507	2009	<i>O. sativa</i>	Philippines	nd	Dr C. Vera Cruz
BLS508	2009	<i>O. sativa</i>	Philippines	nd	Dr C. Vera Cruz
BLS509	2009	<i>O. sativa</i>	Philippines	nd	Dr C. Vera Cruz
BLS510	2009	<i>O. sativa</i>	Philippines	nd	Dr C. Vera Cruz
<i>Xanthomonas oryzae</i> pv. <i>oryzae</i> from Africa					
BAI1	2004	<i>O. sativa</i>	Burkina Faso	Centre-Est, Bagré	Gonzalez <i>et al.</i> , 2007
BAI2	2004	<i>O. sativa</i>	Burkina Faso	Centre-Est, Bagré	Gonzalez <i>et al.</i> , 2007
BAI3	2004	<i>O. sativa</i>	Burkina Faso	Centre-Est, Bagré	Gonzalez <i>et al.</i> , 2007
BAI4	2004	<i>O. glaberrima</i>	Burkina Faso	Centre-Est, Bagré	Gonzalez <i>et al.</i> , 2007
BAI24	2009	<i>O. sativa</i>	Burkina Faso	Centre-Est, Bagré	Dr I. Wonni
BAI25	2009	<i>O. sativa</i>	Burkina Faso	Centre-Est, Bagré	Dr I. Wonni
BAI26	2009	<i>O. sativa</i>	Burkina Faso	Centre-Est, Bagré	Dr I. Wonni
BAI27	2009	<i>O. sativa</i>	Burkina Faso	Centre-Est, Bagré	Dr I. Wonni
BAI28	2009	<i>O. sativa</i>	Burkina Faso	Centre-Est, Bagré	Dr I. Wonni
BAI29	2009	<i>O. sativa</i>	Burkina Faso	Centre-Est, Bagré	Dr I. Wonni
BAI30	2009	<i>O. sativa</i>	Burkina Faso	Centre-Est, Bagré	Dr I. Wonni
BAI31	2009	<i>O. sativa</i>	Burkina Faso	Centre-Est, Bagré	Dr I. Wonni
BAI32	2009	<i>O. sativa</i>	Burkina Faso	Centre-Est, Bagré	Dr I. Wonni
BAI33	2009	<i>O. sativa</i>	Burkina Faso	Centre-Est, Bagré	Dr I. Wonni
BAI45	2011	<i>O. sativa</i>	Burkina Faso	Boucle du Mouhoun, Sourou	Dr I. Wonni
BAI46	2011	<i>O. sativa</i>	Burkina Faso	Boucle du Mouhoun, Sourou	Dr I. Wonni
BAI50	2011	<i>O. longistaminata</i>	Burkina Faso	Boucle du Mouhoun, Sourou	Dr I. Wonni
BAI51	2011	<i>O. longistaminata</i>	Burkina Faso	Boucle du Mouhoun, Sourou	Dr I. Wonni
BAI53	2011	<i>O. longistaminata</i>	Burkina Faso	Boucle du Mouhoun, Sourou	Dr I. Wonni
BAI54	2011	<i>O. sativa</i>	Burkina Faso	Boucle du Mouhoun, Sourou	Dr I. Wonni
BAI55	2011	<i>O. sativa</i>	Burkina Faso	Boucle du Mouhoun, Sourou	Dr I. Wonni
BAI56	2011	<i>O. sativa</i>	Burkina Faso	Boucle du Mouhoun, Sourou	Dr I. Wonni
BAI57	2011	<i>O. sativa</i>	Burkina Faso	Boucle du Mouhoun, Sourou	Dr I. Wonni
BAI58	2011	<i>O. sativa</i>	Burkina Faso	Boucle du Mouhoun, Sourou	Dr I. Wonni
BAI59	2011	<i>O. sativa</i>	Burkina Faso	Boucle du Mouhoun, Sourou	Dr I. Wonni
CFBP 1947	1979	<i>O. sativa</i>	Cameroon	Maroua	CFBP
CFBP 1948	1979	<i>O. sativa</i>	Cameroon	Maroua	CFBP
LMG 12466 (CFBP 1949)	1979	<i>O. sativa</i>	Mali	Kayes	CFBP
LMG 12467 (CFBP 1951)	1979	<i>O. sativa</i>	Mali	Kayes	CFBP
MAI1 (CFBP 7325)	2003	<i>O. sativa</i>	Mali	Office du Niger, Niono	Gonzalez <i>et al.</i> , 2007
MAI9	2004	<i>O. sativa</i>	Mali	Office du Niger, Molodo	Gonzalez <i>et al.</i> , 2007
MAI14	2009	<i>O. sativa</i>	Mali	Office du Niger, Molodo	LBMA
MAI15	2009	<i>O. sativa</i>	Mali	Office du Niger, Molodo	LBMA
MAI55	2010	<i>O. sativa</i>	Mali	Office du Niger, Niono	LBMA
MAI70	2012	<i>O. sativa</i>	Mali	Office du Niger, Niono	LBMA
MAI71	2012	<i>O. sativa</i>	Mali	Office du Niger, Niono	LBMA
MAI73	2012	<i>O. sativa</i>	Mali	Office du Niger, Niono	LBMA
MAI74	2012	<i>O. sativa</i>	Mali	Office du Niger, Niono	LBMA
MAI75	2012	<i>O. sativa</i>	Mali	Office du Niger, Niono	LBMA
MAI95	2012	<i>O. sativa</i>	Mali	Office du Niger, Niono	LBMA
MAI96	2012	<i>O. sativa</i>	Mali	Office du Niger, Niono	LBMA
MAI98	2012	<i>O. sativa</i>	Mali	Office du Niger, Niono	LBMA
MAI99	2012	<i>O. sativa</i>	Mali	Office du Niger, Niono	LBMA
MAI100	2012	<i>O. sativa</i>	Mali	Office du Niger, Niono	LBMA
MAI101	2012	<i>O. sativa</i>	Mali	Office du Niger, Niono	LBMA

MAI104	2012	<i>O. sativa</i>	Mali	Office du Niger, Niono	LBMA
MAI105	2012	<i>O. sativa</i>	Mali	Office du Niger, Niono	LBMA
MAI106	2012	<i>O. sativa</i>	Mali	Office du Niger, Niono	LBMA
MAI107	2012	<i>O. sativa</i>	Mali	Sikasso, Sélingué	LBMA
MAI108	2012	<i>O. sativa</i>	Mali	Sikasso, Sélingué	LBMA
NAI1	2004		Niger	Saga	Gonzalez <i>et al.</i> , 2007
NAI2	2004		Niger	Toula	Gonzalez <i>et al.</i> , 2007
NAI3	2004		Niger	Bonfeba	Gonzalez <i>et al.</i> , 2007
NAI4	2004		Niger	Bonfeba	Gonzalez <i>et al.</i> , 2007
NAI5	2004		Niger	Toula	Gonzalez <i>et al.</i> , 2007
NAI6	2004		Niger	Toula	Gonzalez <i>et al.</i> , 2007
NAI7	2004		Niger	Toula	Gonzalez <i>et al.</i> , 2007
NAI8	2004		Niger	Bonfeba	Gonzalez <i>et al.</i> , 2007
NAI9	2004		Niger	Bonfeba	Gonzalez <i>et al.</i> , 2007
<i>Xanthomonas oryzae</i> pv. <i>oryzae</i> from Asia, Australia and Latin America					
R3	nd	<i>O. sativa</i>	Australia	nd	Dr J.E. Leach
Bangladesh	nd	<i>O. sativa</i>	Bangladesh	nd	Dr J.E. Leach
BanguIXO1	nd	<i>O. sativa</i>	Bangladesh	nd	Dr J.E. Leach
FXO27 (LMG 9585)	nd	<i>O. sativa</i>	Bolivia	Sta. Cruz	LMG
BAIYUAN2	nd	<i>O. sativa</i>	China	nd	Dr J.E. Leach
FJI#30	nd	<i>O. sativa</i>	China	Fujian	Dr J.E. Leach
GXO372	nd	<i>O. sativa</i>	China	nd	Dr J.E. Leach
HB21	nd	<i>O. sativa</i>	China	Fungning	Dr J.E. Leach
HN35	nd	<i>O. sativa</i>	China	nd	Dr J.E. Leach
HN173	nd	<i>O. sativa</i>	China	nd	Dr J.E. Leach
HUB1 #32	nd	<i>O. sativa</i>	China	Hubei, Wuxue	Dr J.E. Leach
Janling 691 #35	nd	<i>O. sativa</i>	China	Hubei, Shiaogan	Dr J.E. Leach
SD38	nd	<i>O. sativa</i>	China	nd	Dr J.E. Leach
YN9	nd	<i>O. sativa</i>	China	nd	Dr J.E. Leach
YN37	nd	<i>O. sativa</i>	China	nd	Dr J.E. Leach
CIAT 1185	1982	<i>O. sativa</i>	Colombia	nd	Dr J.E. Leach
A3837	nd	<i>O. sativa</i>	India	nd	Dr J.E. Leach
A3842	nd	<i>O. sativa</i>	India	nd	Dr J.E. Leach
A3857	nd	<i>O. sativa</i>	India	nd	Dr J.E. Leach
A3872 (I13)	nd	<i>O. sativa</i>	India	Gorgal, Uttar Pradesh	Dr J.E. Leach
A3896	nd	<i>O. sativa</i>	India	nd	Dr J.E. Leach
CFBP 2532	1965	<i>O. sativa</i>	India	nd	Dr J.E. Leach
Dye YK9 (LMG 5047)	nd	<i>O. sativa</i>	India	nd	Dr J.E. Leach
IndiaIXO1	nd	<i>O. sativa</i>	India	nd	Dr J.E. Leach
FXO43 (LMG 9589)	nd	<i>O. sativa</i>	Indonesia	nd	Dr J.E. Leach
IXO16	nd	<i>O. sativa</i>	Indonesia	Ciranjans, West Java	Dr J.E. Leach
IXO57	nd	<i>O. sativa</i>	Indonesia	nd	Dr J.E. Leach
IXO60	nd	<i>O. sativa</i>	Indonesia	nd	Dr J.E. Leach
LMG 648	nd	<i>O. sativa</i>	Japan	nd	LMG
KOO367	nd	<i>O. sativa</i>	Korea	nd	Dr J.E. Leach
KXO212	nd	<i>O. sativa</i>	Korea	nd	Dr J.E. Leach
TY818	nd	<i>O. sativa</i>	Korea	nd	Dr J.E. Leach
XOO214	nd	<i>O. sativa</i>	Korea	nd	Dr J.E. Leach
MB18	nd	<i>O. sativa</i>	Malaysia	nd	Dr J.E. Leach
MXO90	nd	<i>O. sativa</i>	Malaysia	Mardi, S. Perai,	Dr J.E. Leach
MXO92	nd	<i>O. sativa</i>	Malaysia	nd	Dr J.E. Leach
MXO99	nd	<i>O. sativa</i>	Malaysia	Jln. Kg Paya,Pulau Sayap, Kedah	Dr J.E. Leach

MXO300	nd	<i>O. sativa</i>	Malaysia	Mada Kodiang, Kedah	Dr J.E. Leach
0913Xoo	nd	<i>O. sativa</i>	Myanmar	nd	Dr J.E. Leach
B37Xoo	nd	<i>O. sativa</i>	Myanmar	nd	Dr J.E. Leach
R13	nd	<i>O. sativa</i>	Myanmar	nd	Dr J.E. Leach
FXO38 (LMG 9588)	nd	<i>O. sativa</i>	Nepal	nd	Dr J.E. Leach
NXO537	nd	<i>O. sativa</i>	Nepal	nd	Dr J.E. Leach
NXO544	nd	<i>O. sativa</i>	Nepal	Dhanusa	Dr J.E. Leach
NXO588	nd	<i>O. sativa</i>	Nepal	Jhapa	Dr J.E. Leach
NXO604	nd	<i>O. sativa</i>	Nepal	Chitwan	Dr J.E. Leach
NXO622	nd	<i>O. sativa</i>	Nepal	nd	Dr J.E. Leach
NXO624	nd	<i>O. sativa</i>	Nepal	Tanahua	Dr J.E. Leach
NXO638	1978	<i>O. sativa</i>	Nepal	Rupendhi	Dr J.E. Leach
PXO35 (LMG 9602)	1972	<i>O. sativa</i>	Philippines	Culape, Lucban, Quezon	Leach <i>et al.</i> , 1992
PXO36 (LMG 9603)	1972	<i>O. sativa</i>	Philippines	Tilib, Lucban, Quezon	Leach <i>et al.</i> , 1992
PXO61 (CFBP 7201)	1973	<i>O. sativa</i>	Philippines	Los Baños, Laguna	Leach <i>et al.</i> , 1992
PXO68 (LMG 9604)	1974	<i>O. sativa</i>	Philippines	Palawan	Leach <i>et al.</i> , 1992
PXO69	1974	<i>O. sativa</i>	Philippines	Palawan	Leach <i>et al.</i> , 1992
PXO71 (CFBP 1946)	1979	<i>O. sativa</i>	Philippines	Palawan	Leach <i>et al.</i> , 1992
PXO78 (LMG 9608)	1975	<i>O. sativa</i>	Philippines	Ajuy, Iloilo	Leach <i>et al.</i> , 1992
PXO79 (CFBP 1981)	1975	<i>O. sativa</i>	Philippines	Davao	Leach <i>et al.</i> , 1992
PXO83 (LMG 9610)	1976	<i>O. sativa</i>	Philippines	Nueva Ecija	Leach <i>et al.</i> , 1992
PXO86 (CFBP 7202)	1977	<i>O. sativa</i>	Philippines	Los Baños, Laguna	Leach <i>et al.</i> , 1992
PXO87 (LMG 9615)	1974	<i>O. sativa</i>	Philippines	Isabela	Leach <i>et al.</i> , 1992
PXO99 (CFBP 7203)	1980	<i>O. sativa</i>	Philippines	Los Baños, Laguna	Leach <i>et al.</i> , 1992
PXO112	1978	<i>O. sativa</i>	Philippines	Banaue, Ifugao	Leach <i>et al.</i> , 1992
PXO114 (LMG 9623)	1979	<i>O. sativa</i>	Philippines	Los Baños, Laguna	Leach <i>et al.</i> , 1992
PXO132 (LMG 9601)	1979	<i>O. sativa</i>	Philippines	Buguey, Cagayan	Leach <i>et al.</i> , 1992
PXO137 (LMG 9609)	1982	<i>O. sativa</i>	Philippines	Midsayap, North Cotabato	Leach <i>et al.</i> , 1992
PXO141 (LMG 9613)	1982	<i>O. sativa</i>	Philippines	Brces, Pili, Camarines Sur	Leach <i>et al.</i> , 1992
PXO142 (LMG 9612)	1981	<i>O. sativa</i>	Philippines	Panabo, Davao	Leach <i>et al.</i> , 1992
PXO143 (LMG 9614)	1974	<i>O. sativa</i>	Philippines	Lopez, Bohol	Leach <i>et al.</i> , 1992
PXO145	1981	<i>O. sativa</i>	Philippines	Bontoc, Mt. Province	Leach <i>et al.</i> , 1992
PXO154 (LMG 9621)	1981	<i>O. sativa</i>	Philippines	IRCTN, Banaue, Ifugao	Leach <i>et al.</i> , 1992
PXO155	1981	<i>O. sativa</i>	Philippines	nd	Leach <i>et al.</i> , 1992
PXO156	1979	<i>O. sativa</i>	Philippines	nd	Leach <i>et al.</i> , 1992
PXO157 (LMG 9605)	1985	<i>O. sativa</i>	Philippines	Casigan, Narra, Palawan	Leach <i>et al.</i> , 1992
PXO164 (LMG 9616)	1979	<i>O. sativa</i>	Philippines	Polangui, Albay	Leach <i>et al.</i> , 1992
PXO165	1982	<i>O. sativa</i>	Philippines	Malicboy, Pagbilao, Quezon	Leach <i>et al.</i> , 1992
PXO170 (LMG 9606)	1984	<i>O. sativa</i>	Philippines	Malinao, Narra, Palawan	Leach <i>et al.</i> , 1992
PXO171 (LMG 9611)	1984	<i>O. sativa</i>	Philippines	San Enrique, Negros Occidental	Leach <i>et al.</i> , 1992
PXO176 (LMG 9617)	1986	<i>O. sativa</i>	Philippines	Sorsogon, Sorsogon	Leach <i>et al.</i> , 1992
PXO177 (LMG 9618)	1986	<i>O. sativa</i>	Philippines	Pawa, Tabaco, Albay	Leach <i>et al.</i> , 1992
PXO183 (LMG 9622)	1986	<i>O. sativa</i>	Philippines	Banaue, Ifugao	Leach <i>et al.</i> , 1992
PXO201	1994	<i>O. sativa</i>	Philippines	nd	Leach <i>et al.</i> , 1992
PXO342	1994	<i>O. sativa</i>	Philippines	Calauan, Laguna	Dr C. Vera Cruz
PXO345 (CFBP 7210)	1994	<i>O. sativa</i>	Philippines	Mabitac, Laguna	Dr C. Vera Cruz

PXO346	1994	<i>O. sativa</i>	Philippines	Mabitac, Laguna	Dr C. Vera Cruz
PXO347	1994	<i>O. sativa</i>	Philippines	Mabitac, Laguna	Dr C. Vera Cruz
PXO349	nd	<i>O. sativa</i>	Philippines	Calauan, Laguna	Dr C. Vera Cruz
PXO351	1995	<i>O. sativa</i>	Philippines	nd	Dr C. Vera Cruz
PXO354	1993	<i>O. sativa</i>	Philippines	Calauan, Laguna	Dr C. Vera Cruz
PXO357	1993	<i>O. sativa</i>	Philippines	Calauan, Laguna	Dr C. Vera Cruz
PXO378	1993	<i>O. sativa</i>	Philippines	Calauan, Laguna	Dr C. Vera Cruz
PXO379	1993	<i>O. sativa</i>	Philippines	Calauan, Laguna	Dr C. Vera Cruz
PXO418	1994	<i>O. sativa</i>	Philippines	Calauan, Laguna	Dr C. Vera Cruz
PXO421	1994	<i>O. sativa</i>	Philippines	Calauan, Laguna	Dr C. Vera Cruz
PXO448 (CFBP 7211)	1994	<i>O. sativa</i>	Philippines	Mabitac, Laguna	Dr C. Vera Cruz
PXO508	1994	<i>O. sativa</i>	Philippines	Calauan, Laguna	Dr C. Vera Cruz
PXO513	1994	<i>O. sativa</i>	Philippines	Calauan, Laguna	Dr C. Vera Cruz
PXO520	1994	<i>O. sativa</i>	Philippines	Calauan, Laguna	Dr C. Vera Cruz
PXO555	1995	<i>O. sativa</i>	Philippines	Calauan, Laguna	Dr C. Vera Cruz
PXO559	1995	<i>O. sativa</i>	Philippines	Calauan, Laguna	Dr C. Vera Cruz
PXO560	1995	<i>O. sativa</i>	Philippines	Calauan, Laguna	Dr C. Vera Cruz
PXO561	1995	<i>O. sativa</i>	Philippines	Calauan, Laguna	Dr C. Vera Cruz
PXO562	1998	<i>O. sativa</i>	Philippines	Calauan, Laguna	Dr C. Vera Cruz
PXO563	1998	<i>O. sativa</i>	Philippines	Calauan, Laguna	Dr C. Vera Cruz
PXO565	1999	<i>O. sativa</i>	Philippines	Calauan, Laguna	Dr C. Vera Cruz
PXO566	1999	<i>O. sativa</i>	Philippines	Calauan, Laguna	Dr C. Vera Cruz
PXO567	1999	<i>O. sativa</i>	Philippines	Calauan, Laguna	Dr C. Vera Cruz
PXO568	2002	<i>O. sativa</i>	Philippines	Calauan, Laguna	Dr C. Vera Cruz
PXO570	2003	<i>O. sativa</i>	Philippines	Calauan, Laguna	Dr C. Vera Cruz
PXO571	2002	<i>O. sativa</i>	Philippines	Calauan, Laguna	Dr C. Vera Cruz
PXO572	2002	<i>O. sativa</i>	Philippines	Calauan, Laguna	Dr C. Vera Cruz
PXO573	2002	<i>O. sativa</i>	Philippines	Calauan, Laguna	Dr C. Vera Cruz
PXO575	2002	<i>O. sativa</i>	Philippines	Calauan, Laguna	Dr C. Vera Cruz
PXO576	2003	<i>O. sativa</i>	Philippines	Calauan, Laguna	Dr C. Vera Cruz
PXO577	2003	<i>O. sativa</i>	Philippines	Calauan, Laguna	Dr C. Vera Cruz
PXO578	2003	<i>O. sativa</i>	Philippines	Calauan, Laguna	Dr C. Vera Cruz
PXO579	2004	<i>O. sativa</i>	Philippines	Calauan, Laguna	Dr C. Vera Cruz
PXO580	2004	<i>O. sativa</i>	Philippines	Calauan, Laguna	Dr C. Vera Cruz
PXO581	2004	<i>O. sativa</i>	Philippines	Calauan, Laguna	Dr C. Vera Cruz
CLI	nd	<i>O. sativa</i>	Sri Lanka	nd	Dr J.E. Leach
Ecyl	nd	<i>O. sativa</i>	Sri Lanka	nd	Dr J.E. Leach
XO03	nd	<i>O. sativa</i>	Thailand	nd	Dr J.E. Leach
XO04	nd	<i>O. sativa</i>	Thailand	nd	Dr J.E. Leach
XO05	nd	<i>O. sativa</i>	Thailand	nd	Dr J.E. Leach
XO08	nd	<i>O. sativa</i>	Thailand	nd	Dr J.E. Leach
XO010	nd	<i>O. sativa</i>	Thailand	nd	Dr J.E. Leach
XO011	nd	<i>O. sativa</i>	Thailand	nd	Dr J.E. Leach
XO012	nd	<i>O. sativa</i>	Thailand	nd	Dr J.E. Leach

PXO = Philippine *X. oryzae* pv. *oryzae* strain collection and BLS = Philippine *X. oryzae* pv. *oryzicola* strain collection from the International Rice Research Institute (IRRI), Los Baños, Philippines; CIAT = Lab Rice Pathology collection of the Centro Internacional de Agricultura Tropical (CIAT), Cali, Colombia; CFBP = Collection Française de Bactéries Phytopathogènes, INRA, Angers, France; NCPPB = National Collection of Plant-Pathogenic Bacteria, United Kingdom; LMG = Laboratorium voor Microbiologie, Universiteit Gent, Belgium; LBMA = Laboratoire Biologie Moléculaire Appliquée, Bamako, Mali.

TABLE S2 Characteristics of 33 sequenced VNTR loci

Locus	Primer #1	Primer #2	<i>Xoo</i> -Africa				<i>Xoo</i> -Asia				<i>Xoc</i>				
			No. of samples ^a	No. of alleles	Allelic range ^b	HGDI score ^c	No. of samples	No. of alleles	Allelic range	HGDI score	No. of samples	No. of alleles	Allelic range	HGDI score	Old name ^d
Xo_G02	AGGCGGCGTTGCATCGTG	AACAGCGGCGTGCCGATG	20/20	3	2-4	0.47					20/20	7	3-9	0.78	B02
Xo_G06	GCAGACGGATGGGCGTTG	CGCTGTGCGGCAGGGTTTG	20/20	2	4-5	0.39	20/20	7	4-12	0.83	20/20	5	5-9	0.72	B05
Xo_G07	CAGGGCGAACGCGATGAG	GCTCCATGGTGCCGGAGA	20/20	6	4-13	0.71	5/20	3	1-7	0.80	20/20	5	5-10	0.73	M08
Xo_G09	GGAATGCCGAAGCGCTCG	TGCTCGACCTGGAAGGCG									20/20	9	2-32	0.79	B06
Xo_G15	GGATCTGCACGGCGCCAC	CGCCTTGTCGATCCGCA	5/5	1	3	0	4/20	4	11-40	1	20/20	7	3-11	0.85	B14
Xo_G16	TGGATCAGCGTGACCGGC	TCGCCACCTCGTTCACGC					4/20	3	3-6	0.83	18/20	5	5-10	0.71	B13
Xo_G20	CGACACCGGTGGCATCCT	GTGCCGGTGACCGTCAGC					20/20	8	10-18	0.78					
Xo_G25	GCTGGCGGTGACCACCAC	GTCCAGCAGGTGCTCGCG	20/20	5	4-9	0.51	20/20	6	1-10	0.78	0/4				
Xo_G27	GTGAGCGAGGTACGGCGG	GGTGGCGTCCATCCTTGG					20/20	9	4-20	0.91					
Xo_G44	GCCGTGCTTCCGTCTGCA	CCGCATCCATCGCGACAG	20/20	3	2-5	0.48	20/20	4	4-7	0.56	19/20	3	2-5	0.50	
Xo_G52	GCACAGCAGCCACGGCAA	GCGTGGACGGATGCCAGC									19/20	7	7-14	0.80	B01
Xo_G53	CGCCAGCCAGAACGACA	GCTGGCGGTGACCACCAC	20/20	4	5-10	0.50	20/20	6	2-15	0.77	0/4				
Xo_G55	ACCCGGCAACTCGCAACC	GGCAGAGCAAGCGGCAT	20/20	5	11-23	0.73					20/20	9	5-17	0.86	B21
Xo_G58	CAACGAGGTGCCCGGCAA	GGAGCGGCACATCATCG	19/20	5	3-7	0.64	20/20	5	1-5	0.80	20/20	6	3-9	0.77	
Xo_G59	CTGCCGGCCTTGCCCAAG	ATGCTTGCGGTCCACGG	20/20	4	4-8	0.49					20/20	6	3-8	0.74	B11
Xo_G60	GTTGCCGCCCGGTAC	CGGCGTCTTGCCAACCCT	20/20	4	3-7	0.63	9/9	3	1-3	0.56	20/20	2	2-3	0.48	
Xo_G62	TGGCCTGATCGTGCGTCA	ACGACAAGCAGCGCCTGC	20/20	2	5-6	0.51	11/20	3	2-4	0.62	4/4	1	3	0	
Xo_G67	GCTTGGCGGGTCACATCG	TGGATCGACCCGGACTG	20/20	2	3-4	0.44	6/6	1	2	0	20/20	13	6-49	0.95	B20
Xo_G70	GGCTCGTCTACGGAGC	TGGAACACGGCTGCGTGC									20/20	5	3-8	0.65	B03
Xo_G71	CGTCGGCCGCAAGTACG	GTCTCGGACACGCGCACG									20/20	4	5-8	0.66	B04
Xo_G73	GCGGTGGGCAGCGATGTC	ATGGTTGTGGTGCGGCGG									20/20	5	2-6	0.69	B08
Xo_G74	CGCGCCGATCACGCCTTG	GGCCACAAACGCAACCCG									20/20	4	4-7	0.36	B09
Xo_G75	GCGCTACACCGGCTTCGC	ATCGGAACGTGGCTGCGC									20/20	3	3-6	0.51	B10
Xo_G77	CCGACCAATGCCGAGCAG	CCAGTCTTCGGCCAGCG									20/20	4	3-6	0.63	B15

Xo_G78	GCTCGGCCACGAAGCTGC	GCGCATGAAGCAGGTCGG									19/20	2	5-6	0.53	B16
Xo_G79	AGGCAGGCGAAATCGGCG	ACGCCGAGGAAGCCGGTG									20/20	8	13-47	0.79	B17
Xo_G80	ACGGATGGCGTTGGCCAG	TCGGCATGATCCTGGGCG					20/20	2	1-2	0.51	19/20	6	3-11	0.74	B18
Xo_G81	GAAACAGGCGCGGCGTCA	CTGACCGGCGTGCTGCTG					12/20	1	2	0	20/20	7	3-14	0.79	B19
Xo_G83	ACAGGCATCGGCCGATTC	GGGGTCTGCTGGGTGCGAC					20/20	2	3-4	0.39	20/20	4	3-6	0.65	G04
Xo_G84	CAGCACAGCGATCGCCTG	CAGGGGCTGCGCAGCTAC									18/20	5	4-9	0.71	G05
Xo_G85	GGACACCATGCCCGTCGG	CTCAGTGCCGGCGTGCGAG									20/20	5	4-10	0.82	G09
Xo_G86	AGCCCCACCCAATCACGC	ACGCGGAGCAAAAAGGCGT									20/20	3	3-6	0.48	G11
Xo_G87	CGCAGATGCTCGTTGCCG	CGATGCGACGCTGGATGC									20/20	3	4-6	0.70	M01

^a Number of strains for which DNA sequences were obtained / number of strains that were analyzed by PCR, indicating success of PCR.

^b Alleles with the smallest number and with the largest number of repeats.

^c HGDI, Hunter-Gaston Discriminatory Index.

^d For comparison, locus names used in a previous publication are given (Zhao *et al.*, 2012).

The test panels consisted of 12 to 14 strains representing worldwide diversity to evaluate the conservation of loci (diversity panel) and 6 to 8 presumably related strains to elucidate the resolution (stability panel):

African *X. oryzae* pv. *oryzae* diversity panel: BAI1, BAI3, BAI4, BAI27, BAI29, BAI32, CFBP 1947, CFBP 1949, CFBP 1951, MAI1, MAI9, MAI14, NAI1, NAI8;

African *X. oryzae* pv. *oryzae* stability panel: NAI2, NAI3, NAI4, NAI5, NAI7, NAI9;

Asian *X. oryzae* pv. *oryzae* diversity panel: A3842, CFBP 2532, CFBP 2532, HN173, IXO57, NXO537, NXO622, PXO99, PXO112, TY818, XOO212, YN37;

Asian *X. oryzae* pv. *oryzae* stability panel: CIAT1185, PXO61, PXO86, PXO145, PXO378, PXO555, PXO566, PXO577;

X. oryzae pv. *oryzicola* diversity panel: Africa: MAI3, MAI 4, MAI5, MAI7, MAI8, MAI10, MAI11; Asia: BLS256, CFBP 2286, CFBP 2287, FJ15, GX01, GX07, UPB497;

X. oryzae pv. *oryzicola* stability panel: Africa: MAI18, MAI19, MAI21; Asia: FJ11, FJ12, FJ13.

TABLE S3 Allelic richness and private allelic richness per locus and per lineage

Locus	Allelic richness			Private allelic richness		
	<i>Xoo</i> -Africa	<i>Xoo</i> -Asia	<i>Xoc</i>	<i>Xoo</i> -Africa	<i>Xoo</i> -Asia	<i>Xoc</i>
Average over 16 loci	4.2	9.4	9.1	1	3.8	4.8
Xo_G06	4	7.6	6.7	0	3	1.1
Xo_G07	8	-	7.7	0	-	0
Xo_G58	6	7.1	9.6	1.4	0	4.3
Xo_G81	4	4.9	16	1	0.8	11.7
Xo_G2553	5	11.7	1.6	5	11.7	1.6
Xo_G88	7	12.5	1	1	6.5	<u>1</u>
Xo_G44	5	7.4	3	1	3.7	0
Xo_G62	3	4	1.6	2	1.4	0
Xo_G55	8	1.7	18.4	0.4	1	11.5
Xo_G59	5	3.7	5.6	1	1	1.6
Xo_G60	5	3	3.8	2.2	1	0
Xo_G67	2	1.7	23.1	1.3	1	23.1
Xo_G09	1	22	22.9	<u>0</u>	6.5	7.1
Xo_G15	1	29.3	13.1	<u>0.1</u>	22.4	6.3
Xo_G80	1	4.2	8.6	<u>0.3</u>	0.8	5.9
Xo_G83	2	2.8	3.3	0	0	0.8

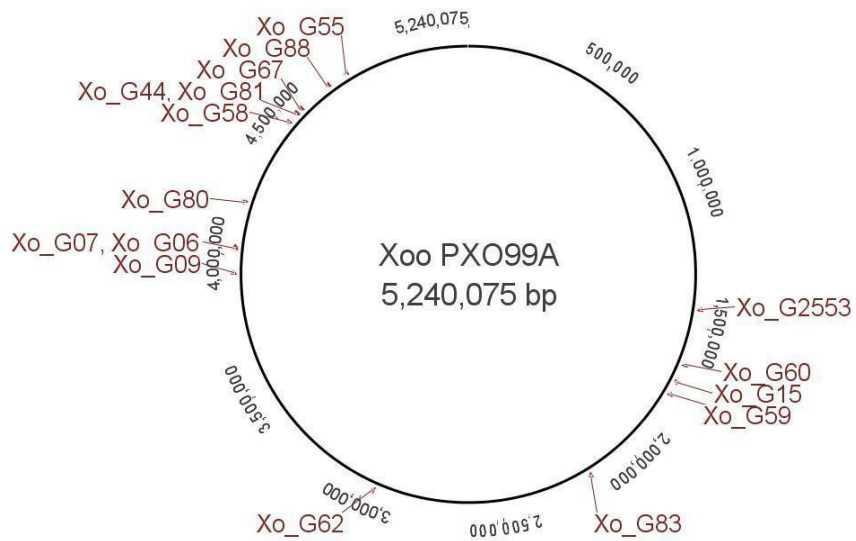
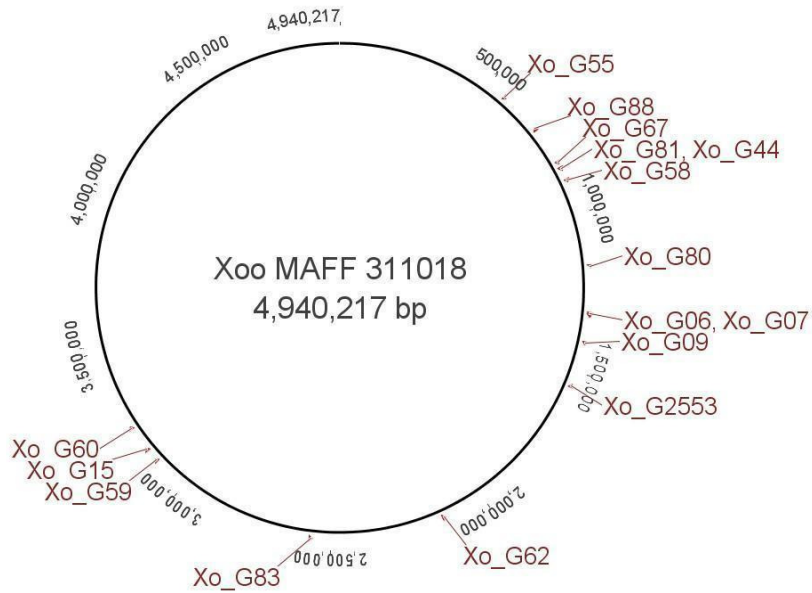
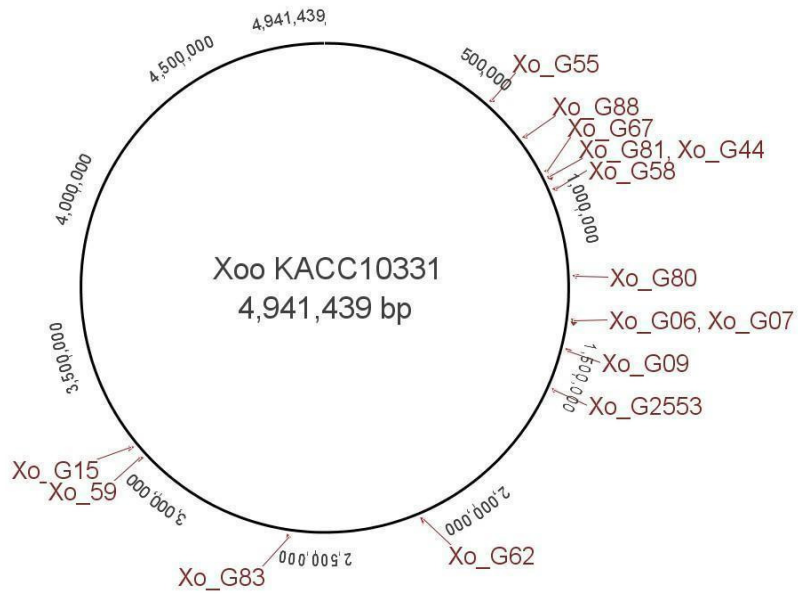
Underlined values indicate private alleles for monomorphic loci.

- indicates that no useful PCR amplicon was obtained due to the insertion of an IS element.

TABLE S4 DAPC groups per lineage and number of strains originating from the different countries

Lineage	DAPC groups per lineage	Number of strains per country in each DAPC group
African <i>Xoo</i>	DAPC-<i>XooAf1a</i>*	17 strains from Mali (2010 & 2012)
	DAPC-<i>XooAf1b</i>*	6 strains from Mali (1979, 2003 & 2009)
	DAPC-<i>XooAf2</i>	2 strains from Cameroon & 1 strain from Burkina Faso (BAI4)
	DAPC-<i>XooAf3</i>	24 strains from Burkina Faso & 9 strains from Niger.
Asian <i>Xoo</i>	DAPC-<i>XooAs1</i>	50 Philippine strains, 11 Chinese strains, 5 Malaysian strains, 4 Indonesian strains, 7 Thai strains, 3 Burmese strains, 3 Korean strains, Nepalese strains, 1 strain from Sri Lanka, 1 strain from Australia (R3) & 1 strain from Colombia (CIAT1185)
	DAPC-<i>XooAs2</i>	19 Philippine strains, 8 Indian strains, 2 Bangladesh strains, 2 Nepalese strains, 1 Japanese strain, 1 Korean strain, 1 strain from Sri Lanka and 1 strain from Bolivia (FXO27)
<i>Xoc</i>	DAPC-<i>Xoc1</i>	70 African strains, 3 Chinese strains (<i>Xoc-china</i> , GXO1, HN-DA-1) & 3 Philippine strains (BLS103, BLS419, BLS489)
	DAPC-<i>Xoc2</i>	76 Asian strains

*When DAPC analysis was run from African *Xoo* MLVA-16 data with K=4 (inferring 4 ancestral groups), the group DAPC-*XooAf1* was further subdivided into *XooAf1a* and *XooAf1b*.



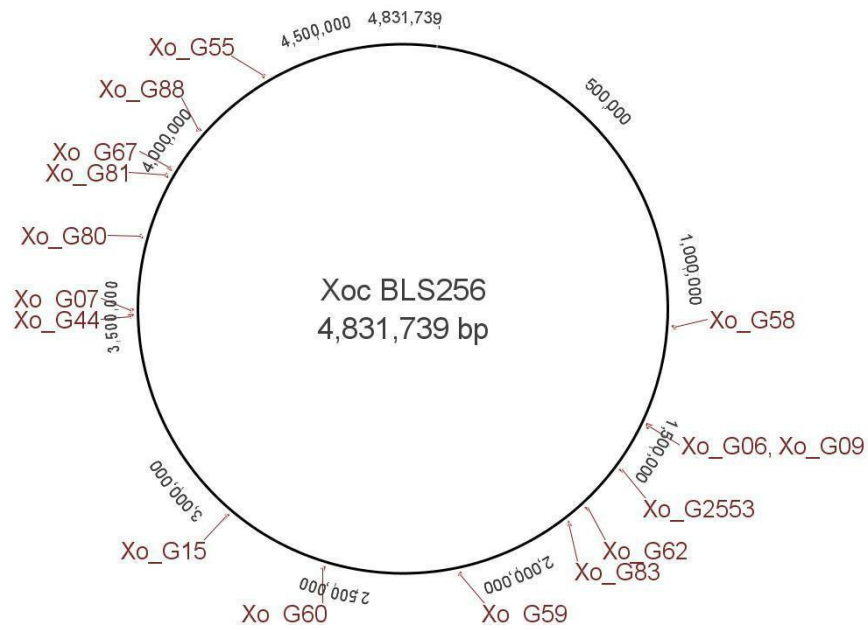


FIG S1 Physical positions of 16 VNTR loci on the chromosomes of completely sequenced *Xanthomonas oryzae* strains: *X. oryzae* pv. *oryzae* strain KACC 103331, *X. oryzae* pv. *oryzae* strain MAFF311018, *X. oryzae* pv. *oryzae* strain PXO99^A, and *X. oryzae* pv. *oryzicola* strain BLS256.

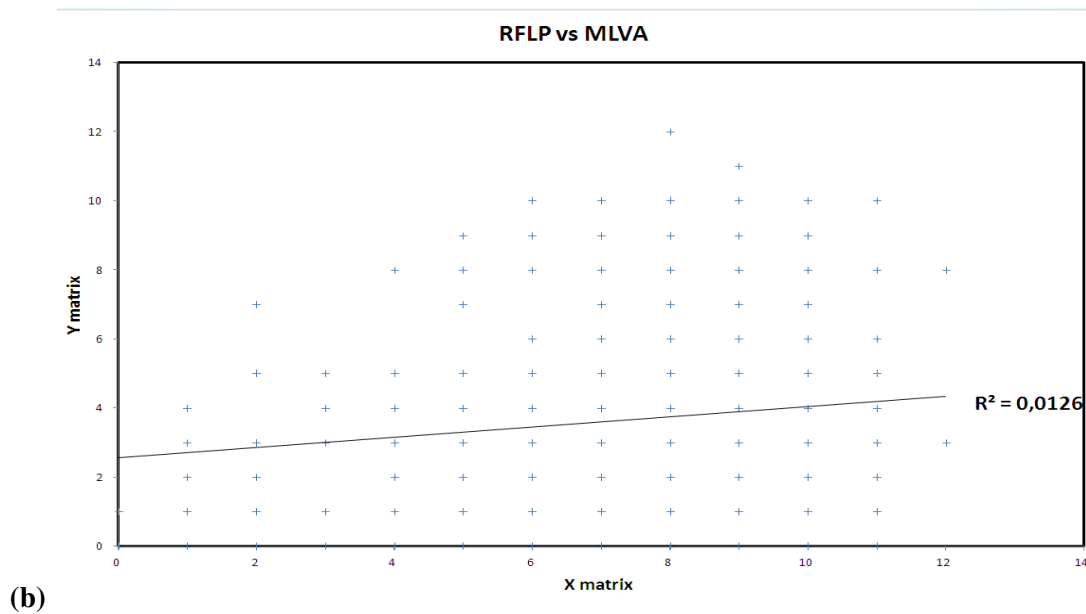
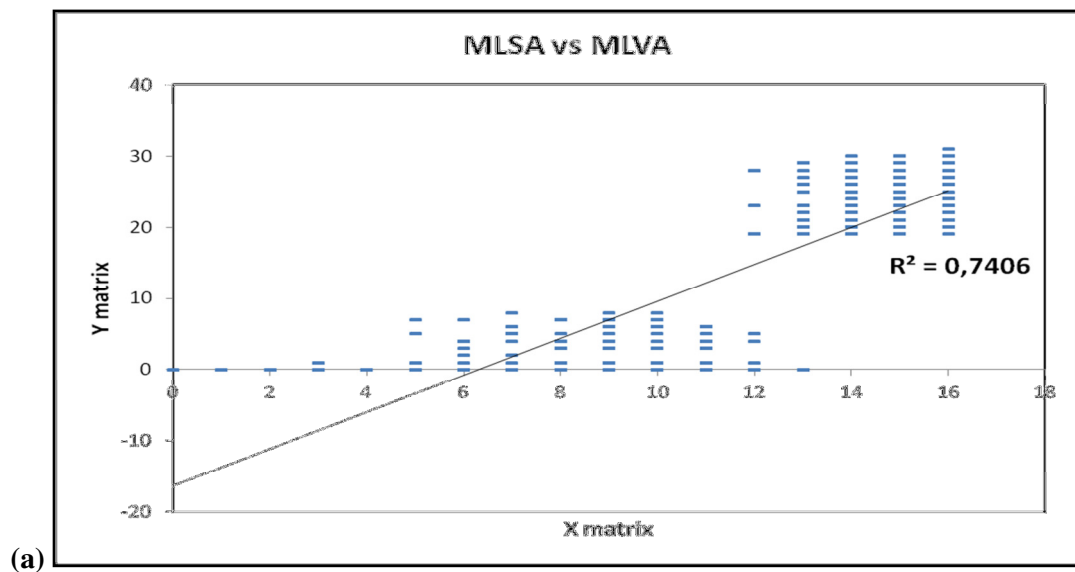


FIG S2 Linear regression analysis of the MLVA-16 matrix (a) against the MLSA matrix of 35 shared strains of *Xanthomonas oryzae* pv. *oryzae* and *X. oryzae* pv. *oryzicola* and (b) against the RFLP matrix of 56 shared strains of *X. oryzae* pv. *oryzicola*, using 999 permutations (GeneAlex 6.501).

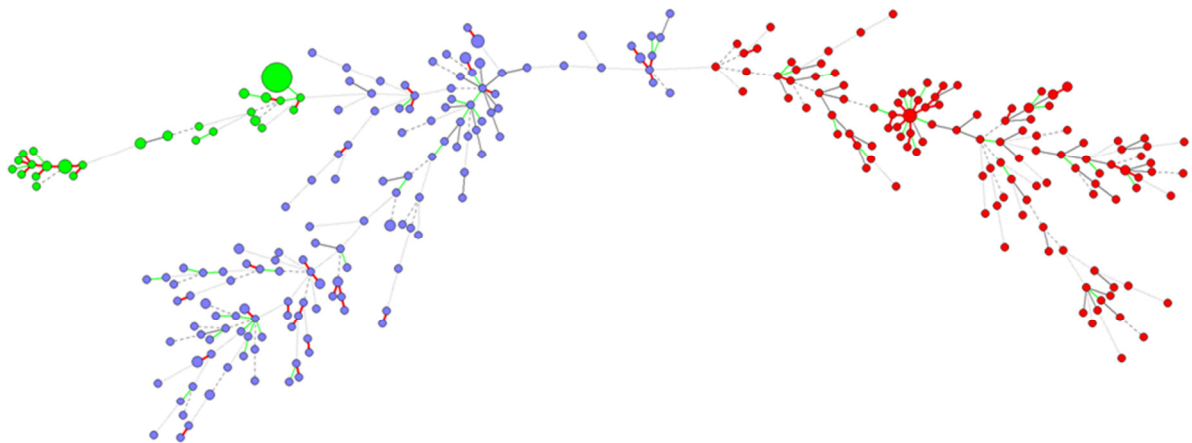


FIG S3 Minimum spanning tree of the worldwide *X. oryzae* strain collection using BioNumerics 7.1 (red = Asian *Xoo*, green = African *Xoo*, blue = *Xoc*). Circle sizes are proportional to the number of strains per haplotype. Red lines correspond to single locus variants, green lines correspond to double locus variants, black lines correspond to triple locus variants, and dashed lines correspond to quadruple locus variants and light grey lines correspond to more-than-quadruple locus variants.

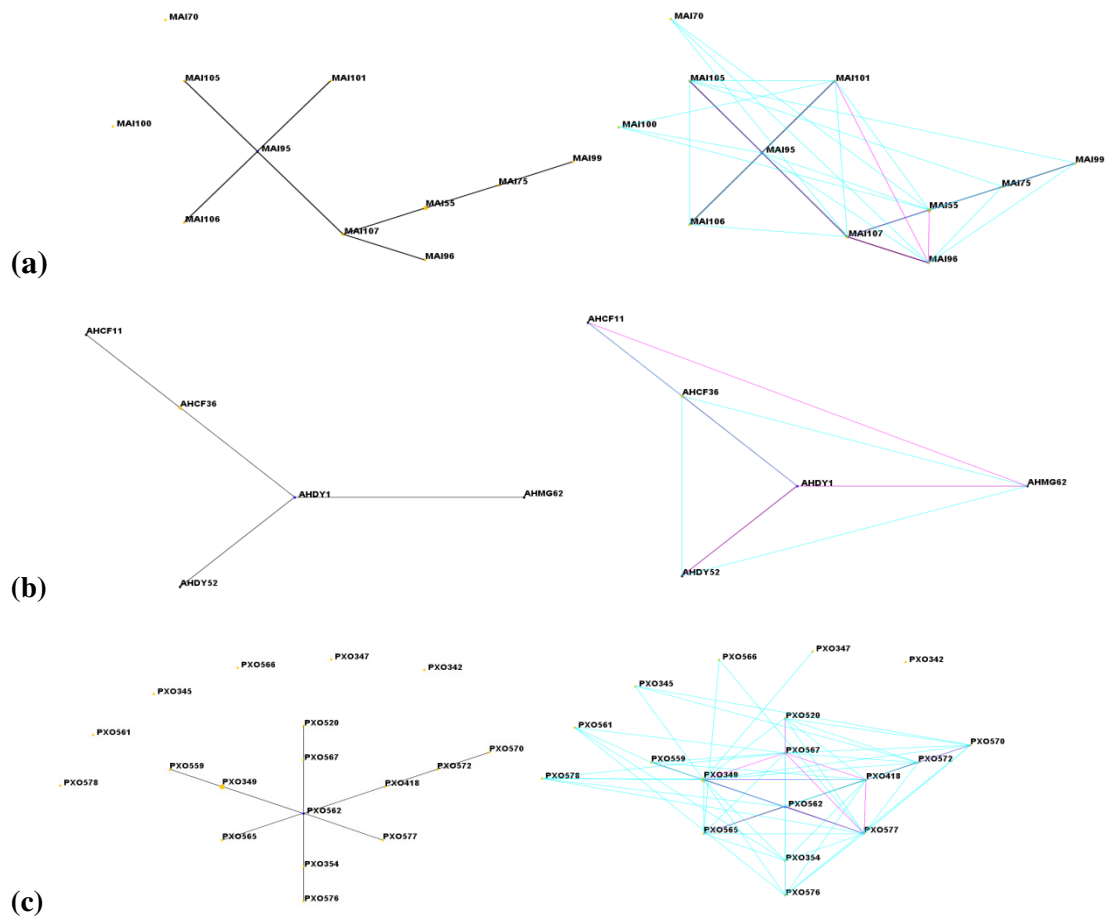


FIG S5 eBURST analysis (a) of the Malian *Xanthomonas oryzae* pv. *oryzae* complex from 2012, (b) of the Chinese *X. oryzae* pv. *oryzicola* complex from 2011, and (c) of the Philippine *X. oryzae* pv. *oryzae* complex from 1994-2003. Complexes with single locus variants (in black), complexes with crosslinked single locus variants (in pink) and double locus variants (in blue) are represented.

References

1. **Gonzalez C, Szurek B, Manceau C, Mathieu T, Sere Y, Verdier V.** 2007 Molecular and pathotypic characterization of new *Xanthomonas oryzae* strains from West Africa. *Mol. Plant Microbe Interact.* **20**:534–546.
2. **Leach JE, Rhoads ML, Vera Cruz CM, White FF, Mew TW, Leung H.** 1992. Assessment of genetic diversity and population structure of *Xanthomonas oryzae* pv. *oryzae* with a repetitive DNA element. *Appl. Environ. Microbiol.* **58**:2188–2195.
3. **Wonni I, Cottyn B, Detemmerman L, Dao S, Ouedraogo L, Sarra S, Tekete C, Poussier S, Corral R, Triplett L, Koita O, Koebnik R, Leach J, Szurek B, Maes M, Verdier V.** 2014. Analysis of *Xanthomonas oryzae* pv. *oryzicola* population in Mali and Burkina Faso reveals a high level of genetic and pathogenic diversity. *Phytopathology* **104**:520–531.
4. **Zhao S, Poulin L, Rodriguez-R LM, Forero-Serna N, Liu SH, Wonni I, Szurek B, Verdier V, Leach JE, He YQ, Feng JX, Koebnik R.** 2012. Development of a variable number of tandem repeats typing scheme for the bacterial rice pathogen *Xanthomonas oryzae* pv. *oryzicola*. *Phytopathology* **102**:948–956.