

15 **Supplemental Figure 1. Tissue Harvesting**

Conventional excision of pterygium with autotransplantation of a superotemporal conjunctival graft was carried out under local anesthesia by a single surgeon. (1) demonstration of the pterygium; (2) excision of the pterygium; (3) measuring of the conjunctival defect; (4) demonstration of the free conjunctival graft with a small
20 rectangular piece of normal conjunctival tissue (control tissue) attached; (5) transfer of the graft; and (6) graft attached with the use of fibrin tissue adhesive.

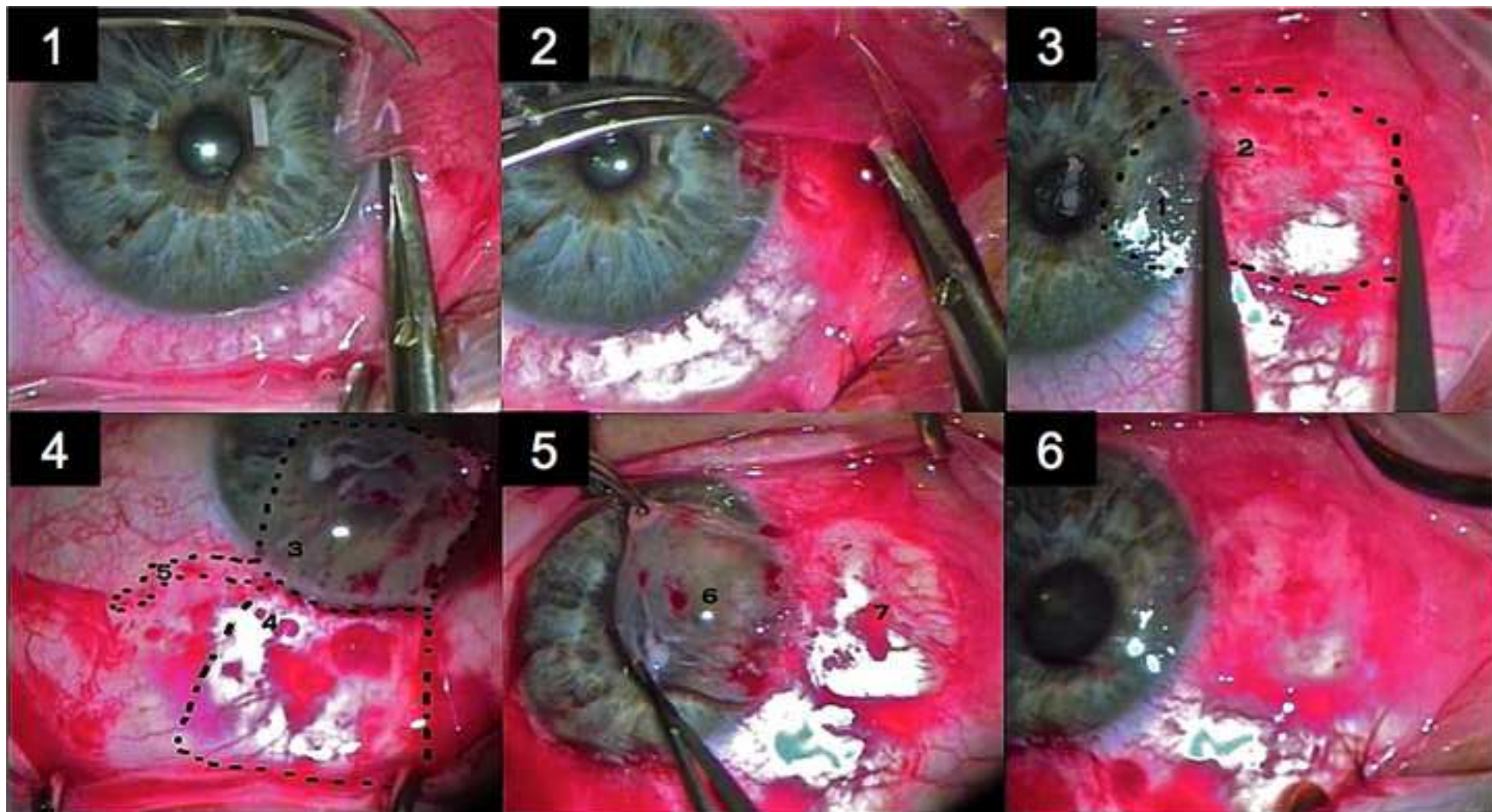
Supplemental Figure 2. Sources of Variation

Bar graph showing the sources of variation in the genome-wide (A) miRNA and (B)
25 mRNA expression analysis. The X-axis of the plot represents the factors or

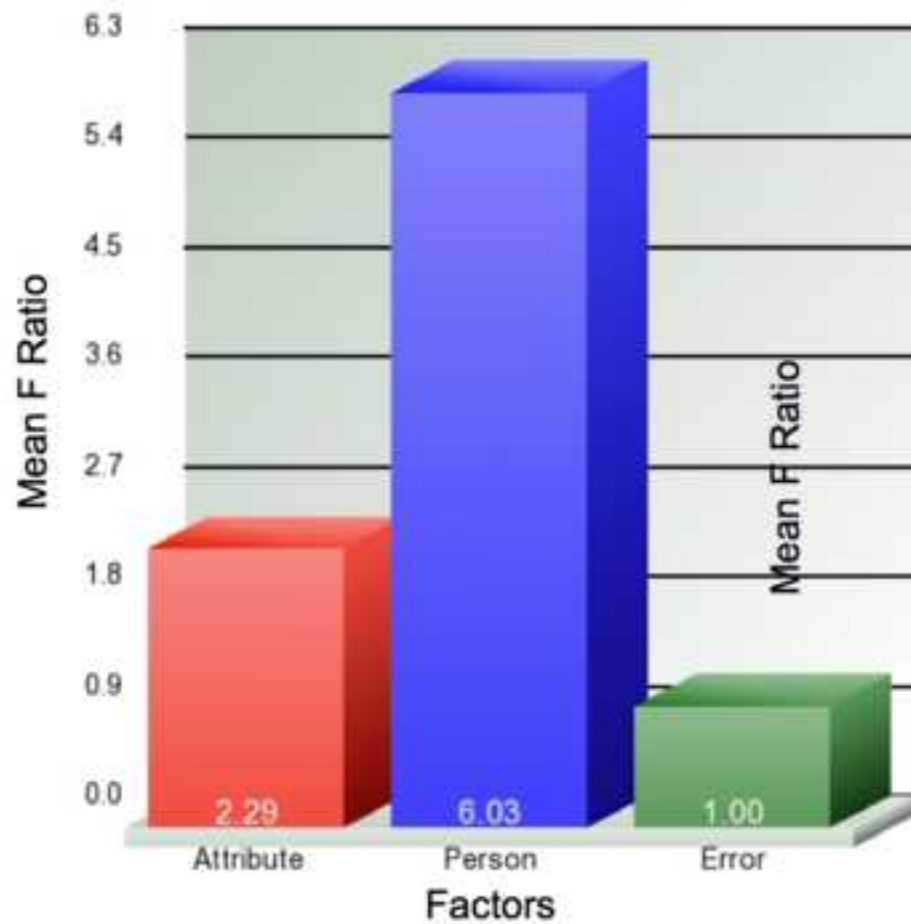
interactions in the ANOVA model and the Y-axis represents the F ratio of the factors or interactions. F ratio describes the signal to noise ratio and is the average signal to noise ratio of all the computed variables for each factor.

5

10



A. miRNA



B. mRNA

