

Additional file 1

Additional file 1 includes 1 Supplemental Table, and 4 Supplemental Figures.

Supplementary Figure Legends

Supplementary Figure 1. Berberine-mediated regulation of expressions several key EMT effectors, including E-cadherin, vimentin, Twist and Snail. (A) Western blot analysis of the concentration-dependent effects of the berberine on the various EMT effectors in the PC-3 cells. (B) The mRNA expression levels of key EMT effectors are analyzed by EMT PCR Array experiments.

Supplementary Figure 2. Aberrant expressions of berberine-modulated EMT-related genes in different clinical stages of prostate cancer tissues. Relative expression levels of PDGFRB (A) and COL1A2 (B) in different clinical stages of prostate cancer tissues analyzed using the public GEO database. *** $p < 0.001$.

Supplementary Figure 3. Kaplan-Meier curves according to various combinations of three-, two- or single gene models. Overall survival for combinations of BMP7/NODAL/WNT11 (A), BMP7/WNT11 (B), NODAL/WNT11 (C), BMP7 (D), NODAL (E) and WNT11 (F) mRNA status of prostate cancer patients.

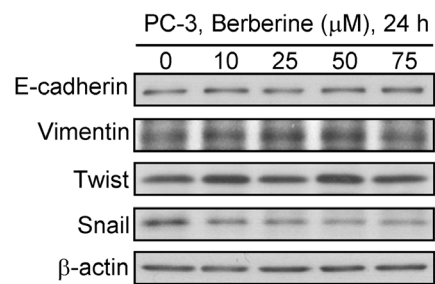
Supplementary Figure 4. Expression level and Kaplan-Meier curves of Snail in prostate cancer tissues. (A) Relative expression levels of Snail in different clinical stages of prostate cancer tissues analyzed using the public GEO database. Overall survival for Snail (B) or combinations of three-gene models of their mRNA status: BMP7/NODAL/SNAI1 (C) of prostate cancer patients. *** $p < 0.001$.

Supplementary Table 1. 84 Epithelial-to-Mesenchymal Transition (EMT)-Associated Genes.

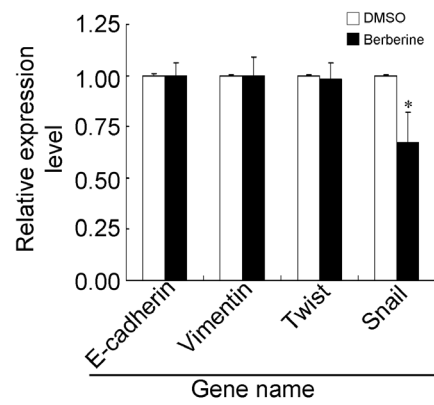
	1	2	3	4	5	6	7	8	9	10	11	12
A	AHNAK	AKT1	BMP1	BMP2	BMP7	CALD1	CAMK2N1	CAV2	CDH1	CDH2	COL1A2	COL3A1
B	COL5A2	CTNNB1	DSC2	DSP	EGFR	ERBB3	ESR1	F11R	FGFBP1	FN1	FOXC2	FZD7
C	GNG11	GSC	GSK3B	IGFBP4	IL1RN	ILK	ITGA5	ITGAV	ITGB1	JAG1	KRT14	KRT19
D	KRT7	MAP1B	MMP2	MMP3	MMP9	MSN	MST1R	NODAL	NOTCH1	NUDT13	OCLN	PDGFRB
E	PLEK2	PPPDE2	PTK2	PTP4A1	RAC1	RGS2	SERPINE1	SIP1	SMAD2	SNAI1	SNAI2	SNAI3
F	SOX10	SPARC	SPP1	STAT3	STEAP1	TCF3	TCF4	TFPI2	TGFB1	TGFB2	TGFB3	TIMP1
G	TMEFF1	TMEM132A	TSPAN13	TWIST1	VCAN	VIM	VPS13A	WNT11	WNT5A	WNT5B	ZEB1	ZEB2

Supplemental Figure 1

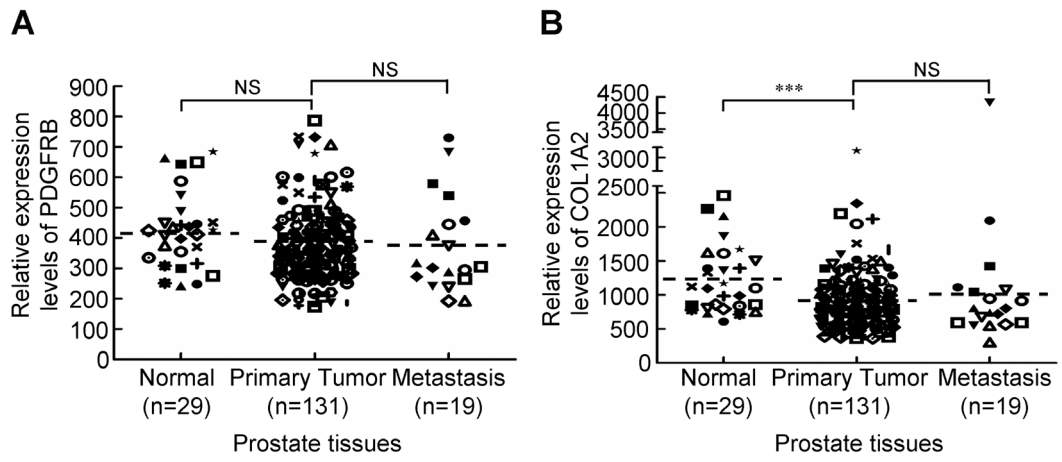
A



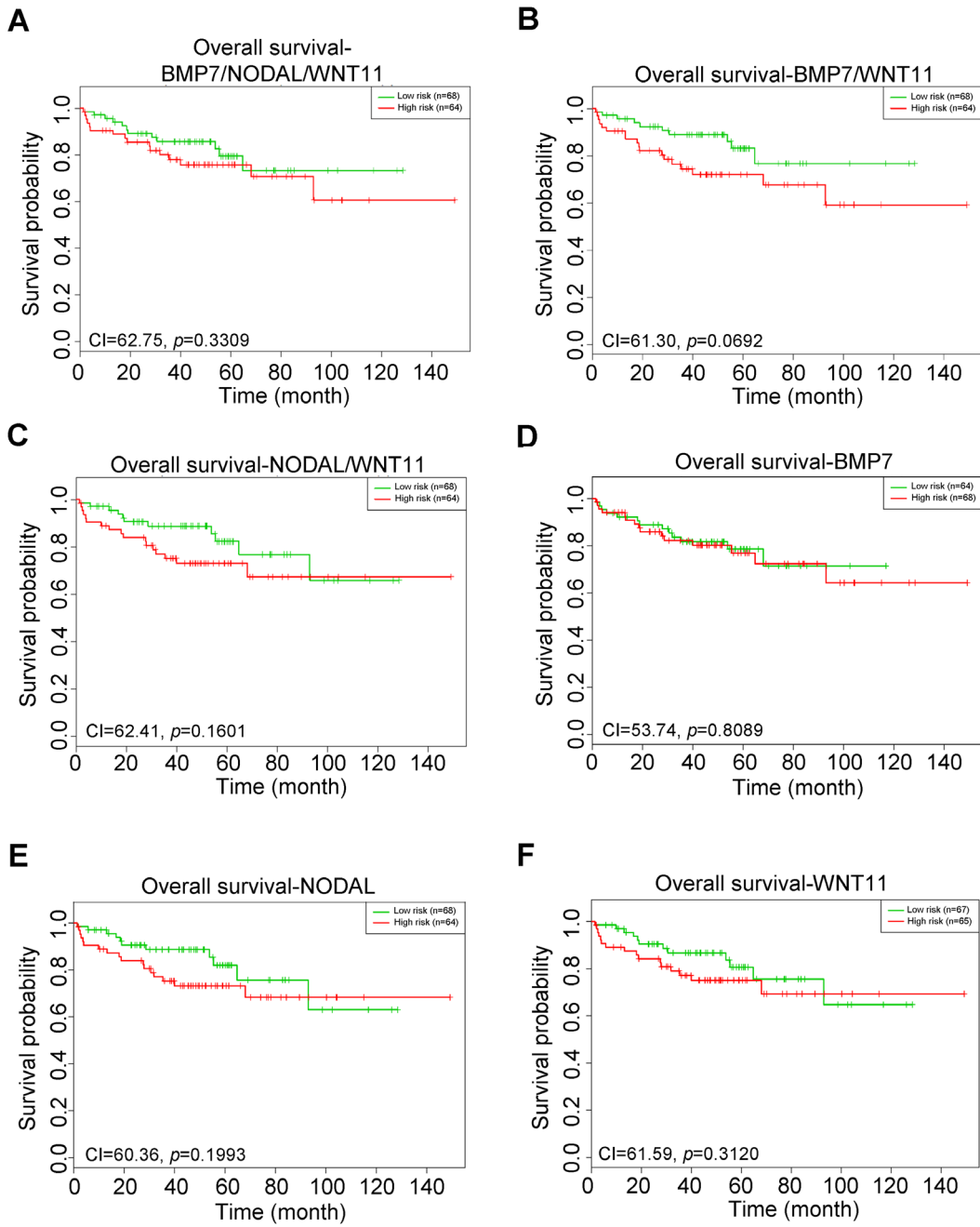
B



Supplemental Figure 2

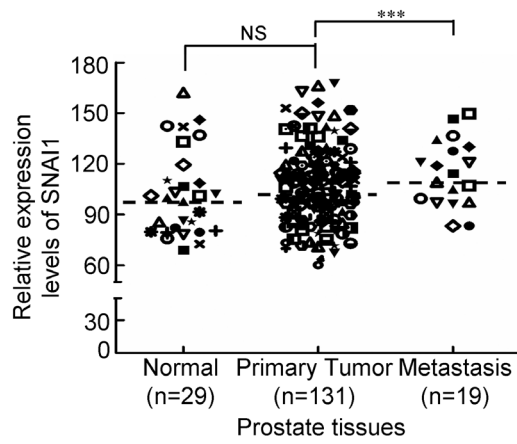


Supplemental Figure 3

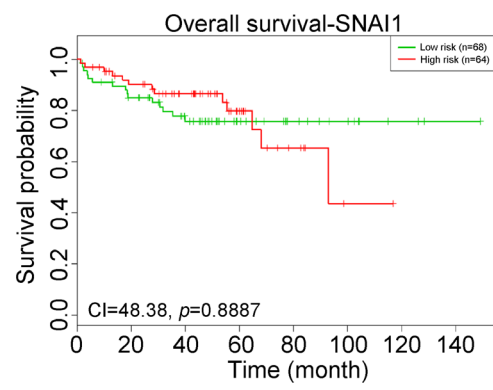


Supplemental Figure 4

A



B



C

