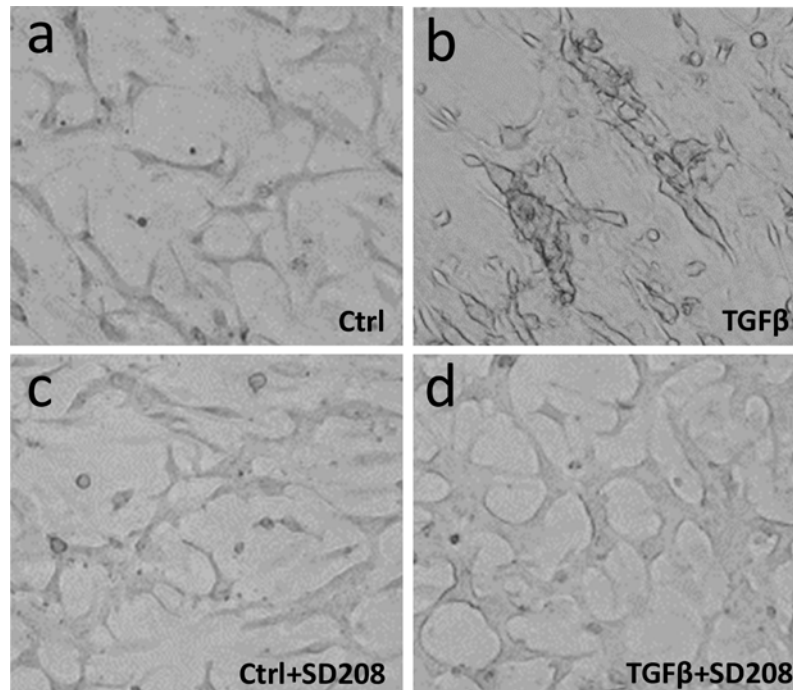
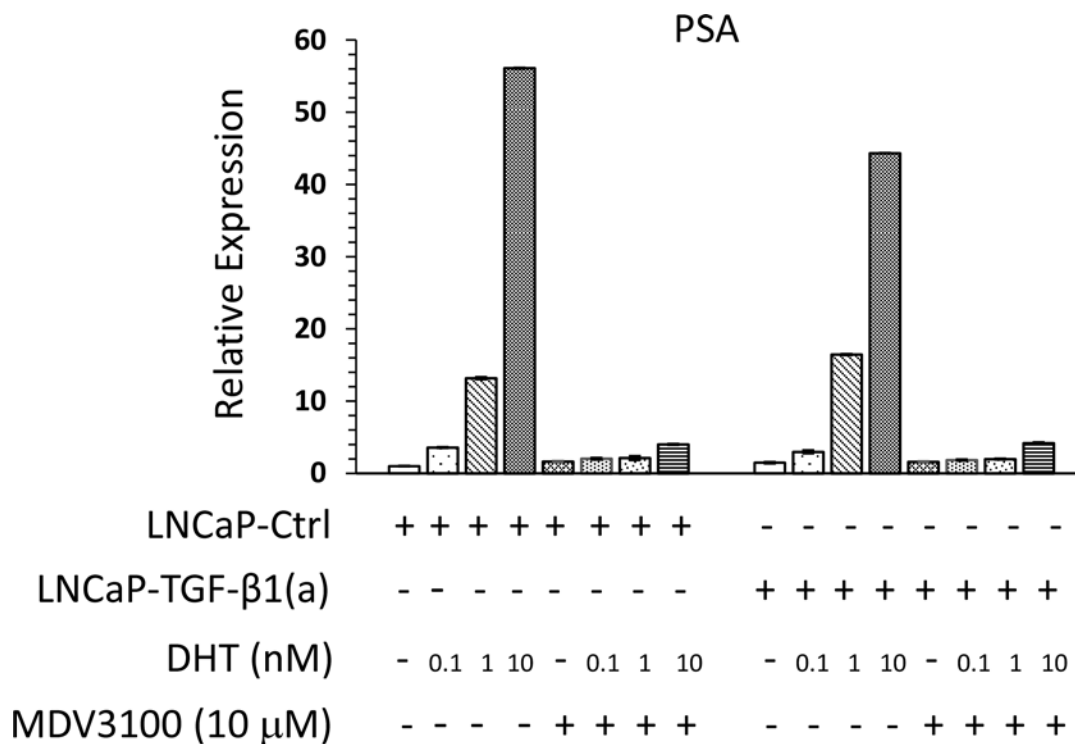


## SUPPLEMENTARY FIGURES



**Supplementary Figure 1: Prostate stromal TGF- $\beta$  signaling induces profound changes in the co-cultured LNCaP cells (higher magnification).** (a-d) LNCaP-TGF- $\beta$ 1(a) cells and LNCaP-Ctrl cells were co-cultured with HPS191 human prostate stromal cells in RPMI1640 supplemented with 0.2% FBS, and treated with 400 nM of SD-208 or control for 14 days. Representative photographs were shown for (a) control and (c) SD208 treated LNCaP-Ctrl/HPS191 co-cultures, and (b) control and (d) SD208 treated LNCaP-TGF- $\beta$ 1(a)/HPS191 co-cultures. HPS191 cells are at the bottom layer.



**Supplementary Figure 2: LNCaP-TGF-β1(a) cells and LNCaP-Ctrl cells express comparable levels of basal and DHT-induced PSA.** LNCaP-TGF-β1(a) cells and LNCaP-Ctrl cells were cultured in RPMI1640 supplemented with 0.2% charcoal-stripped FBS, and treated with different dosages of DHT in the presence (+) or absence (-) of 10 μM of MDV3100 for 6 days. Total RNA was extracted and reverse transcribed. qPCR were used to analyze the expression of PSA in these co-cultures. Representative data is from two independent experiments. All gene expression data were normalized to GAPDH expression.