

Supplementary Table 1. Correlations among TCE metabolites in serum and liver in TCE-treated mice in a sub-acute study (600 mg/kg/d for 5 days).

		TCA in serum	DCA in serum	DCVG in serum	DCVC in serum	TCA in liver	DCA in liver	TCOH in liver	DCVG in liver
DCVG in liver	ρ	-0.49	0.54	0.77	0.67	-0.10	0.09	0.40	1
	q	-	-	-	0.017	-	-	-	
	n	21	17	6	19	26	26	25	26
TCOH in liver	ρ	-0.28	0.13	-0.1	0.26	-0.28	-0.12	1	
	q	-	-	-	-	-	-		
	n	20	16	5	18	25	25	25	
DCA in liver	ρ	0.78	0.19	0.37	0.00	0.74	1		
	q	0.001	-	-	-	0.001			
	n	21	17	6	19	26	26		
TCA in liver	ρ	0.62	-0.24	-0.2	-0.09	1			
	q	0.020	-	-	-				
	n	21	17	6	19	26			
DCVC in serum	ρ	-0.48	0.03	0.54	1				
	q	-	-	-					
	n	19	15	7	20				
DCVG in serum	ρ	-0.29	-0.31	1					
	q	-	-						
	n	7	6	7					
DCA in serum	ρ	-0.11	1						
	q	-							
	n	18	18						
TCA in serum	ρ	1							
	q								
	n	22							

Table displays Spearman rank correlation (ρ), false discovery rate-corrected significance value (q), and the number of data points with matching values in the same animal (n). Empty cell indicates that no correlation value was computed. Dash (-) indicates that the correlation was not significant ($q>0.1$).

Supplementary Table 2. Correlations among TCE metabolites and toxicity phenotypes in the liver of TCE-treated mice in a sub-acute study (600 mg/kg/d for 5 days). Data from vehicle-treated samples were not included in the analyses.

		TCA	DCA	TCOH	DCVG	Liver/Body weight ratio	<i>Acox1</i>	<i>Cyp4a10</i>	Hepato-cellular proliferation
Hepatocellular proliferation	ρ	0.22	0.30	-0.43	-0.39	0.16	0.23	0.27	1
	q	-	-	-	-	-	-	-	
	n	23	23	22	23	24	20	20	24
<i>Cyp4a10</i>	ρ	0.63	0.79	-0.13	0.00	0.35	0.68	1	
	q	0.022	<0.001	-	-	-	0.006		
	n	19	19	18	19	20	20	20	
<i>Acox1</i>	ρ	0.60	0.89	-0.15	0.11	0.09	1		
	q	0.031	<0.001	-	-	-			
	n	19	19	18	19	20	20		
Liver/Body weight ratio	ρ	-0.03	0.15	-0.42	-0.38	1			
	q	-	-	-	-				
	n	26	26	25	26	27			
DCVG	ρ	-0.10	0.09	0.40	1				
	q	-	-	-					
	n	26	26	25	26				
TCOH	ρ	-0.28	-0.12	1					
	q	-	-						
	n	25	25	25					
DCA	ρ	0.74	1						
	q	<0.001							
	n	26	26						
TCA	ρ	1							
	q								
	n	26							

Table displays Spearman rank correlation (ρ), false discovery rate-corrected significance value (q), and the number of data points with matching values in the same animal (n). Empty cell indicates that no correlation value was computed. Dash (-) indicates that the correlation was not significant ($q>0.1$).

Supplementary Table 3. Correlations among TCE metabolites in serum and liver in TCE-treated mice in a sub-chronic study (100 or 400 mg/kg/d for 1, 2 or 4 wks).

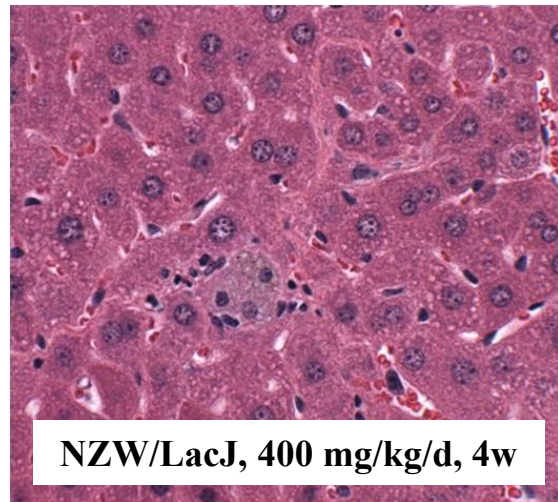
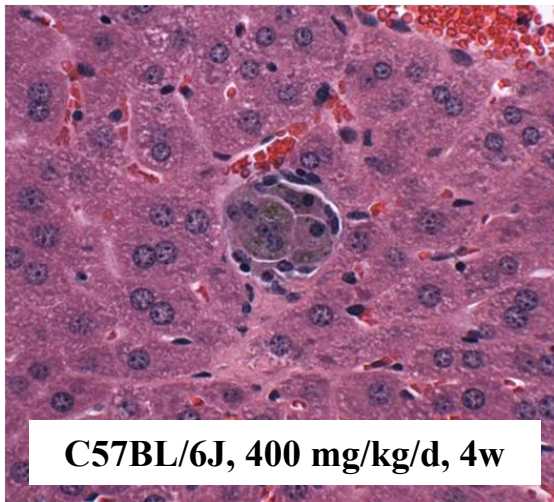
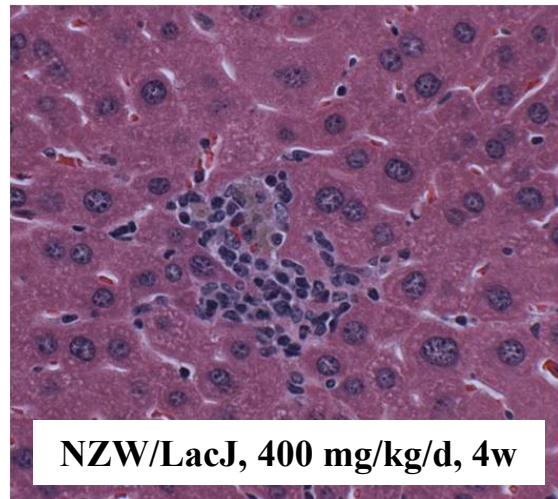
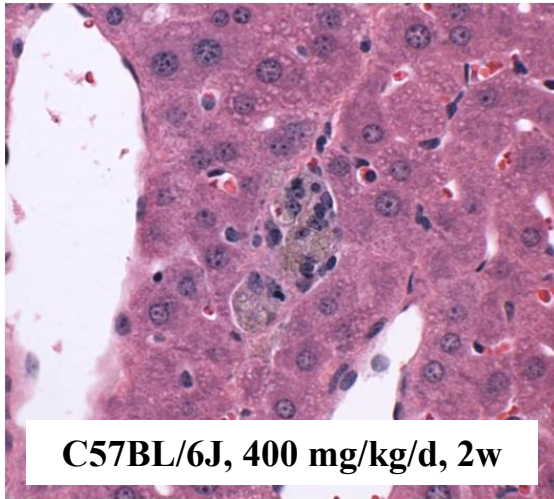
		TCA in serum	DCA in serum	TCA in liver	DCA in liver	TCOH in liver	DCVG in liver
DCVG in liver	ρ	0.04	-0.09	0.20	-0.13	0.41	1
	q	-	-	-	-	-	
	n	15	15	16	16	16	16
TCOH in liver	ρ	0.65	0.72	0.60	0.65	1	
	q	<0.001	<0.001	<0.001	<0.001		
	n	36	36	37	37	37	
DCA in liver	ρ	0.83	0.97	0.90	1		
	q	<0.001	<0.001	<0.001			
	n	40	42	43	43		
TCA in liver	ρ	0.90	0.91	1			
	q	<0.001	<0.001				
	n	40	42	43			
DCA in serum	ρ	0.87	1				
	q	<0.001					
	n	39	42				
TCA in serum	ρ	1					
	q						
	n	40					

Table displays Spearman rank correlation (ρ), false discovery rate-corrected significance value (q), and the number of data points with matching values in the same animal (n). Empty cell indicates that no correlation value was computed. Dash (-) indicates that the correlation was not significant ($q > 0.1$).

Supplementary Table 4. Correlations among TCE metabolites and toxicity phenotypes in the liver of TCE-treated mice in a sub-chronic study (100 or 400 mg/kg/d for 1, 2 or 4 wks). Data from vehicle-treated samples were not included in the analyses.

		TCA	DCA	TCOH	DCVG	Liver/Body weight ratio	<i>Acox1</i>	<i>Cyp4a10</i>	Hepato-cellular proliferation
Hepatocellular proliferation	ρ	0.13	0.09	-0.09	-0.24	-0.25	-0.26	-0.43	1
	q	-	-	-	-	-	-	0.0515	
	n	35	35	32	14	34	28	28	35
<i>Cyp4a10</i>	ρ	0.65	0.58	0.36	0.50	0.68	0.39	1	
	q	<0.001	0.001	0.089	-	<0.001	0.045		
	n	35	35	31	12	34	35	35	
<i>Acox1</i>	ρ	0.44	0.45	0.48	0.11	0.34	1		
	q	0.022	0.020	0.020	-	0.092			
	n	35	35	31	12	34	35		
Liver/Body weight ratio	ρ	0.47	0.43	0.34	0.16	1			
	q	0.007	0.017	0.083	-				
	n	41	41	36	16	41			
DCVG	ρ	0.20	-0.13	0.41	1				
	q	-	-	-					
	n	16	16	16	16				
TCOH	ρ	0.60	0.65	1					
	q	<0.001	<0.001						
	n	37	37	37					
DCA	ρ	0.90	1						
	q	<0.001							
	n	43	43						
TCA	ρ	1							
	q								
	n	43							

Table displays Spearman rank correlation (ρ), false discovery rate-corrected significance value (q), and the number of data points with matching values in the same animal (n). Empty cell indicates that no correlation value was computed. Dash (-) indicates that the correlation was not significant ($q>0.1$).



Supplementary Figure 1. Hemosiderin depositions observed in liver from TCE-treated group. Deposition of yellowish-brown pigments was a result of phagocytized red blood cells in macrophages in liver.