

Supplemental Figure 1: mRNA Expression of Ovarian Steroidogenic Enzymes and Gonadotropin Receptors

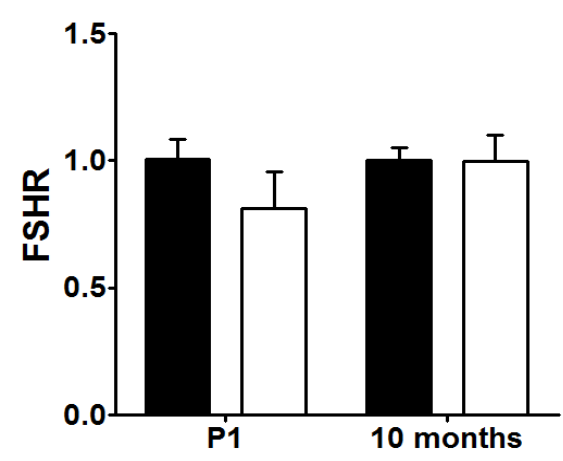
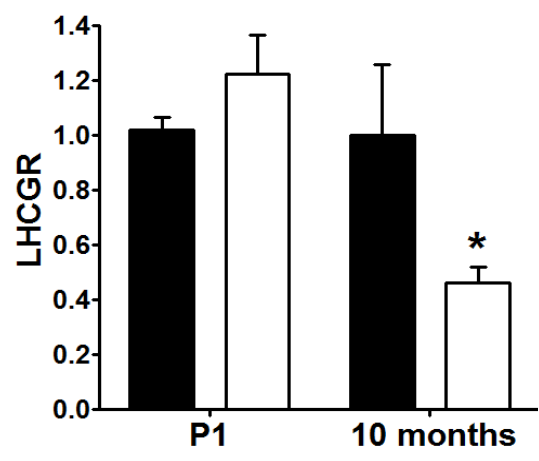
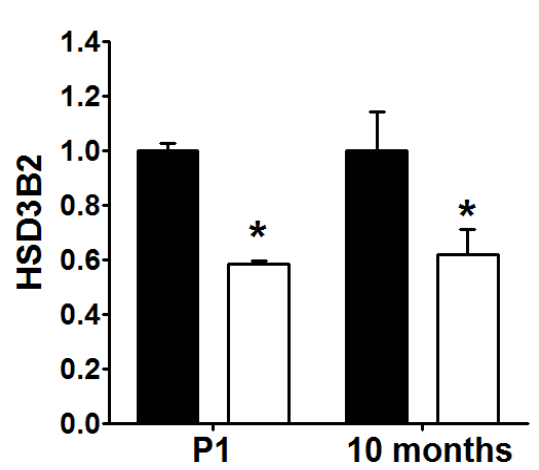
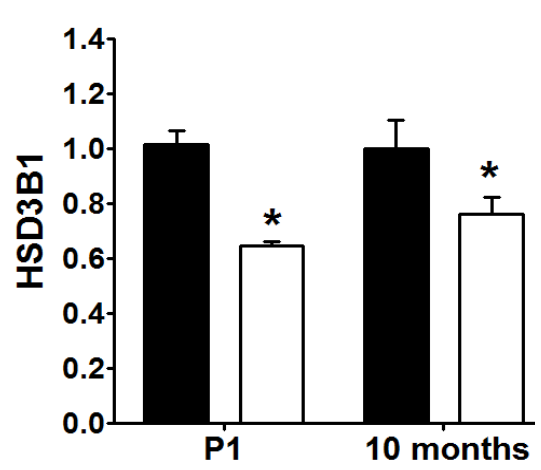
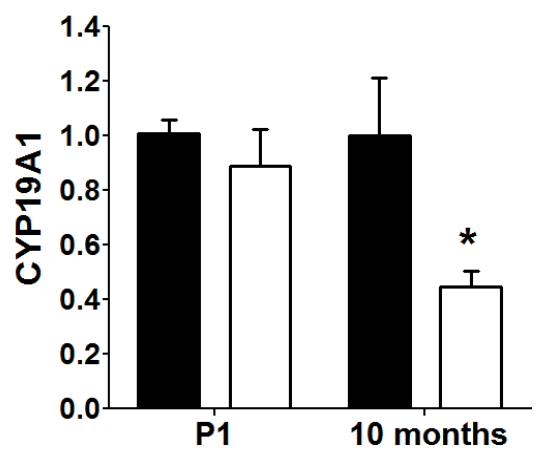
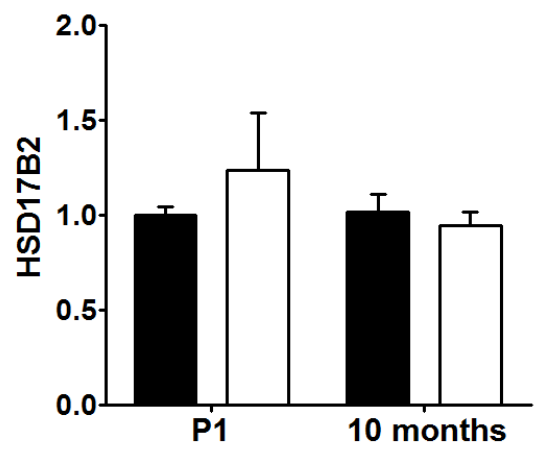
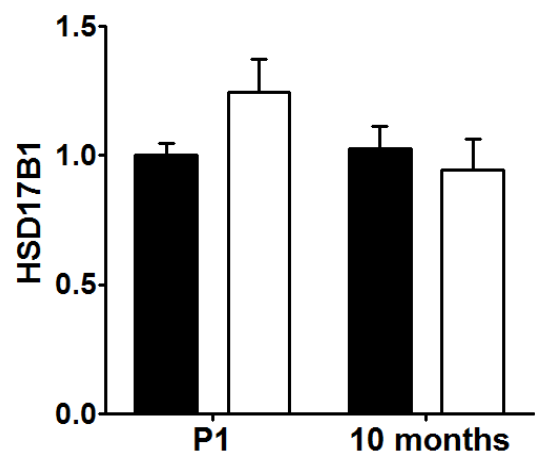
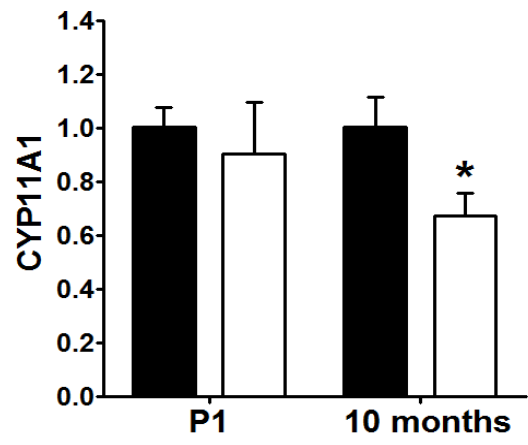
Ovarian mRNA expression of CYP11A1, HSD17B1, HSD 17B2, CYP19A1, HSD3B1, HSD3B2 and LH and FSH receptors in 1 day old (upper pane) and in 10 month old (lower panel) control (■) and LBW (□) females. Values are expressed as fold change (mean ± SE) relative to control from the same age set at 1. *P<0.01 vs. control; For P1 N=9 for con and N=6 for LBW; N=6 for 10 month group.

Supplemental Figure 2a: Ovarian Histology in 10 Month Old Females

Histological staining of ovaries showing follicular sizes in control (■) and LBW females with persistent estrus and persistent diestrus.

Supplemental Figure 2b: Ovarian Histology in 10 Month Old Females

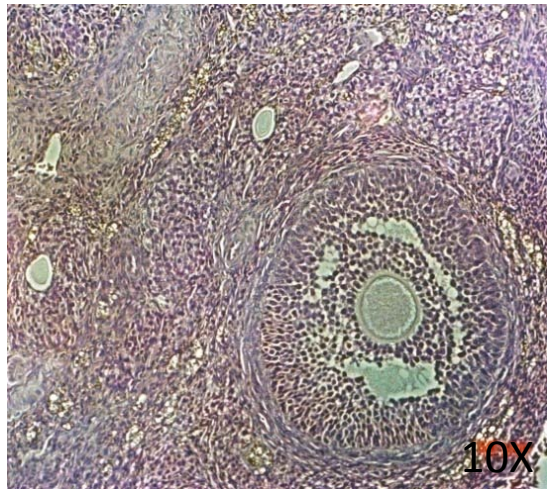
Number of corpora lutea, and small, medium and large follicles in control (■) and LBW females with persistent estrus (□) and persistent diestrus (■). Values are mean ± SE per section of 4 sections per ovary in each group. *P<0.01 vs. control



Supplemental Fig. 1

Supplemental Figure 2a

**Control
Normal Ovary**



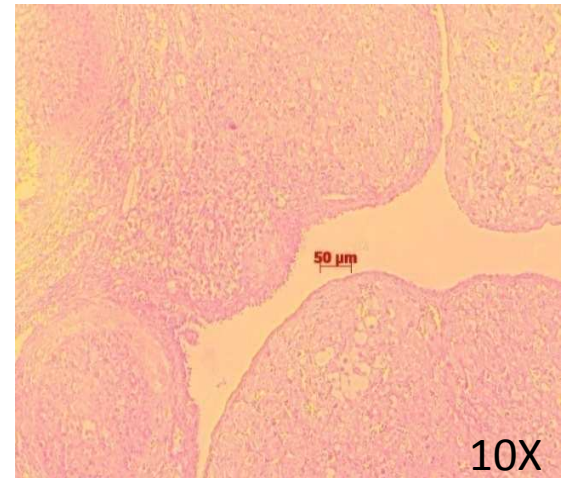
**Small follicle
< 150 μm**

**LBW
Persistent Estrus**



**Large follicle
> 300 μm**

**LBW
Persistent Diestrus**



Corpora lutea

Supplemental Figure 2b

