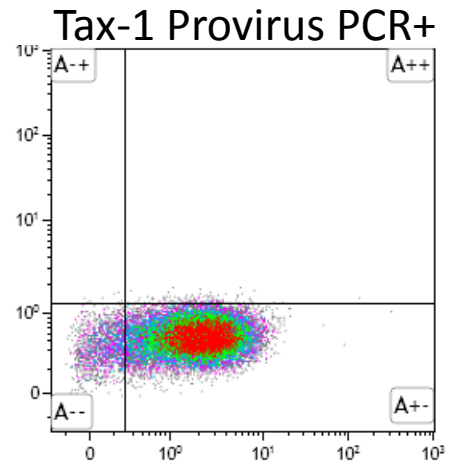
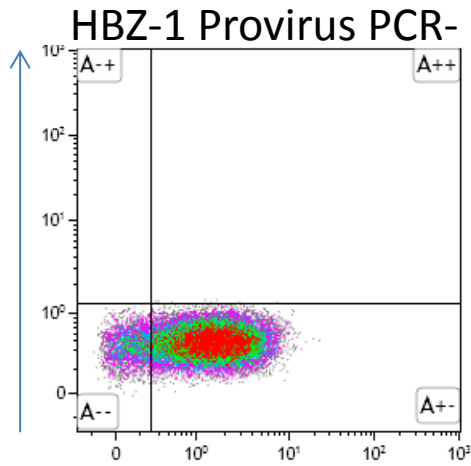
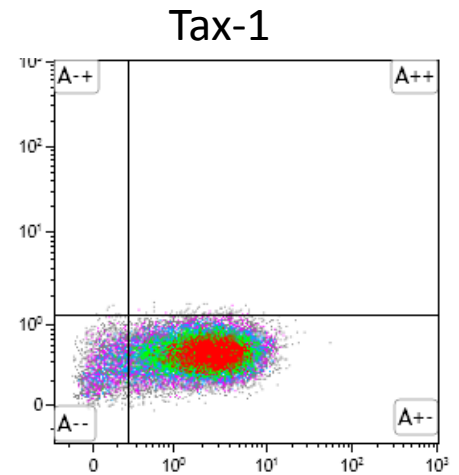
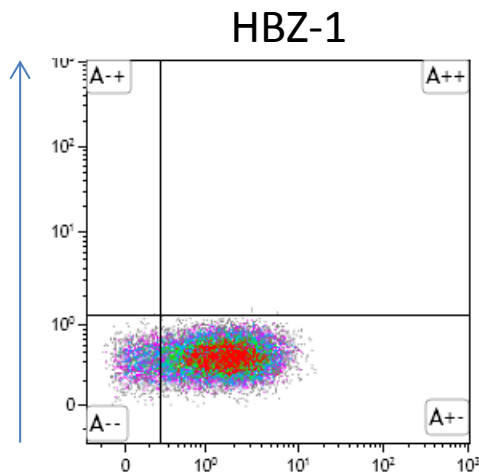


CTL clones do not express Tax protein

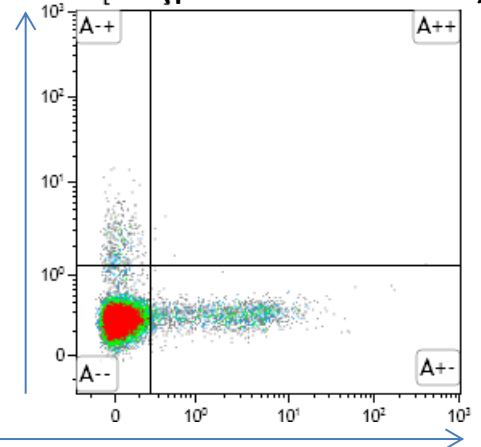
Anti-Tax LT4
AF488



IGG3 AF488



PBMC (positive control)



CD8

Legend: The Tax-1 CTL clone is infected with HTLV-1, but does not express Tax protein. CTL clones were stained with anti-CD8, anti-Tax, or an isotype control with an irrelevant specificity. PBMC from an HTLV-1 infected donor were cultured overnight and stained in parallel as a positive control.

All methods and further information can be found in the legend for figure 1.