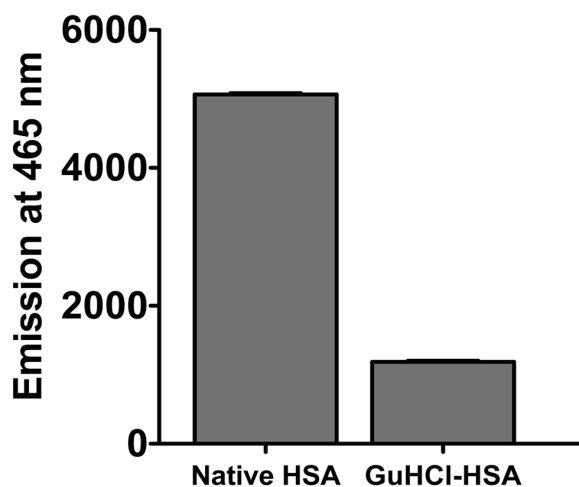
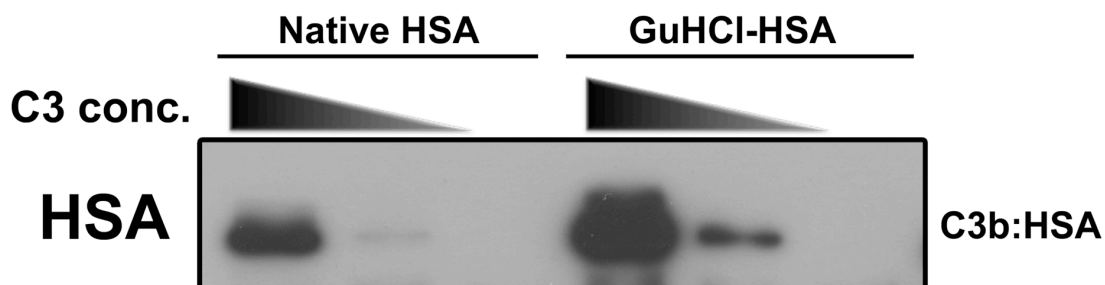


Supplementary Figure 1

A.



B.



C3b binds more avidly to denatured human serum albumin (HSA). Panel A: Fluorescence emitted by TNS binding (Ex/Em 322/465 nm) to native or guanidine hydrochloride (GuHCl) denatured HSA to measure the level of protein denaturation. Panel B: Native HSA or GuHCl HSA (both at 0.4 mg/ml) were allowed to form complexes with either 1.3 mg/ml C3 (physiological concentration), 0.26 mg/ml C3 or no C3 in the presence of factor B (fB, 0.2 mg/ml), factor D (fD, 1 μ g/ml) and 0.5 mM Mg^{2+} , all proteins were mixed at physiological (plasma) ratios with the exception of reduced or no C3 samples. The samples were incubated at 37°C for 15 minutes. Aliquots were analyzed using SDS-PAGE with β -mercaptoethanol on an 8% gel and then immunoblotted for HSA.