

Fig (2A)

First probed with anti-YAP (rabbit), then membrane is stripped and probed with anti-tubulin (mouse)

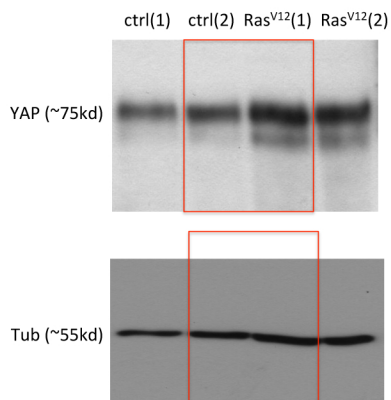
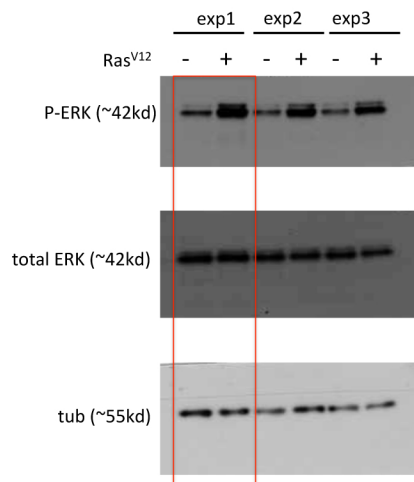
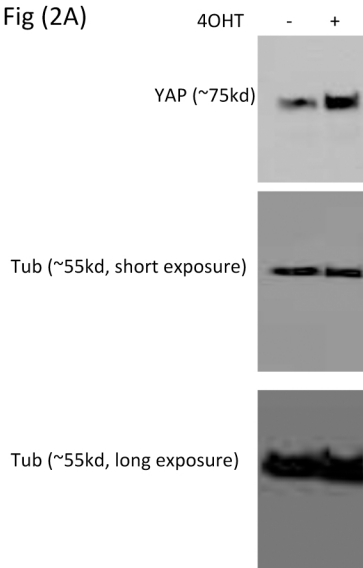


Fig (2A)



First probed with anti-pERK (mouse), then membrane is stripped and probed with anti-total ERK (rabbit). The membrane is stripped for another time and probed with anti-tubulin (mouse)

Fig (2A)



The membrane is first probed with anti-YAP (rabbit), then membrane is stripped and probed with anti-tubulin (mouse). Both long and short exposure of tubulin are shown

Fig 2C

membrane cut into two, upper one is used to probe for lats2; lower one is firstly used to probe p-YAP (rabbit) and tub; then stripped to probe with total YAP (mouse)

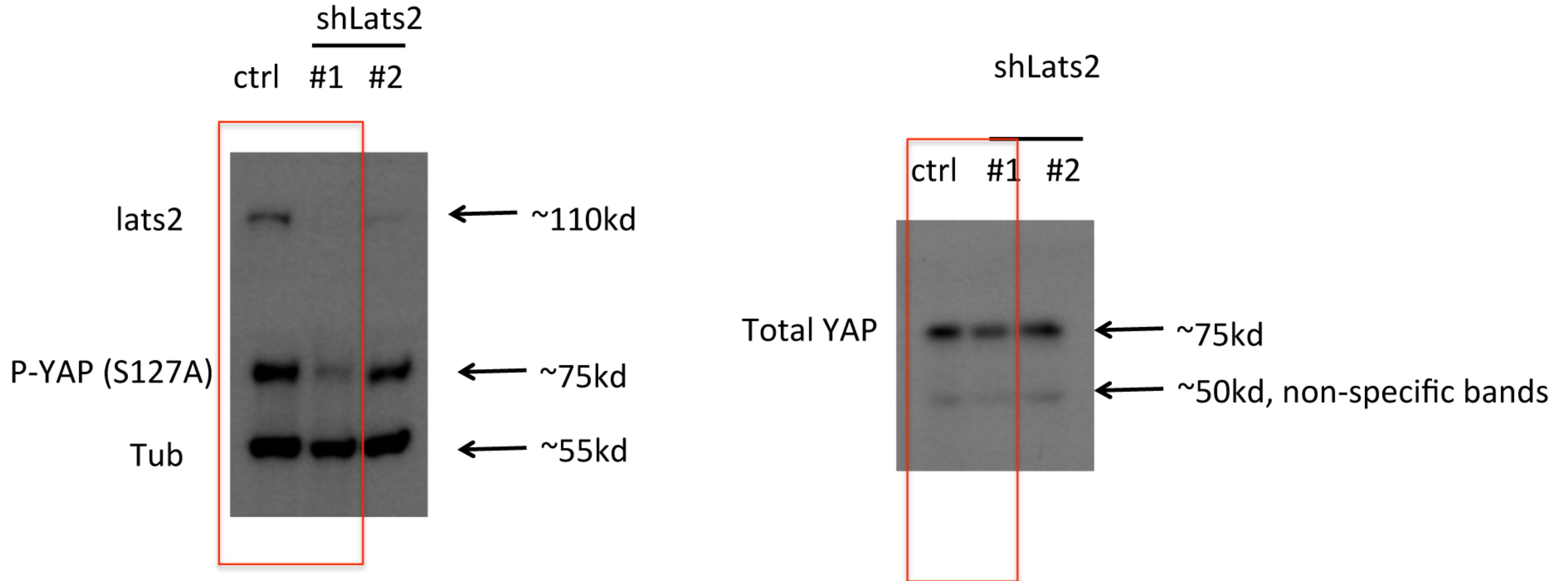


Fig 2D

The membrane is probed with rabbit anti-FLAG and mouse anti-tubulin together

