

Fig 4A

YAP IP (rabbit anti-YAP)

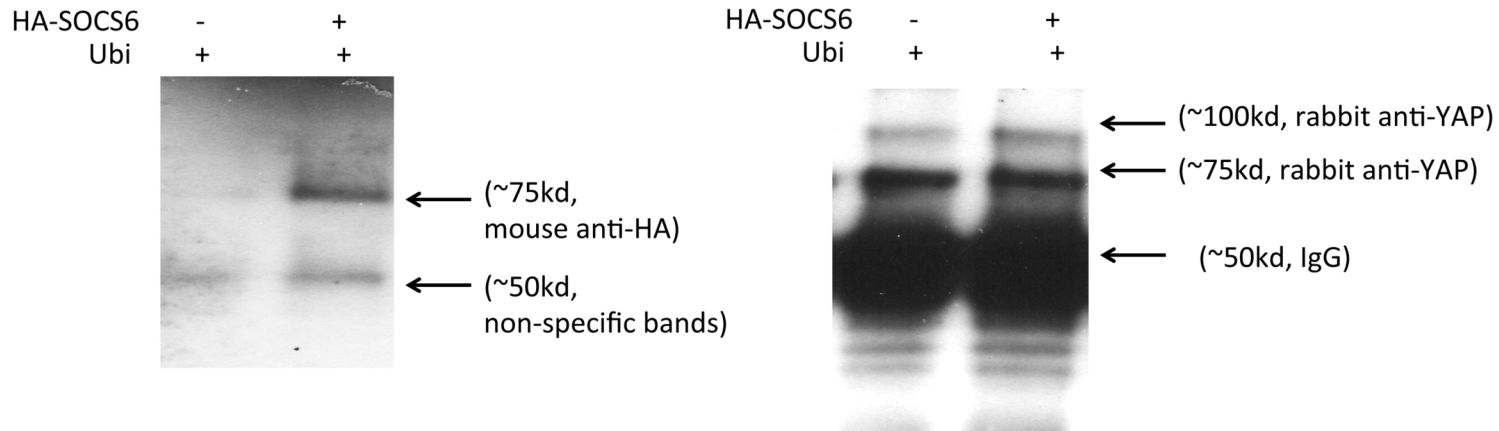


Fig 4A Input (total lysates)

Antibody used:

1. Rabbit anti-YAP
2. Mouse anti-tubulin
3. Mouse anti-HA

Membrane first probed for YAP and tubulin;
Then membrane was then stripped and probed for HA

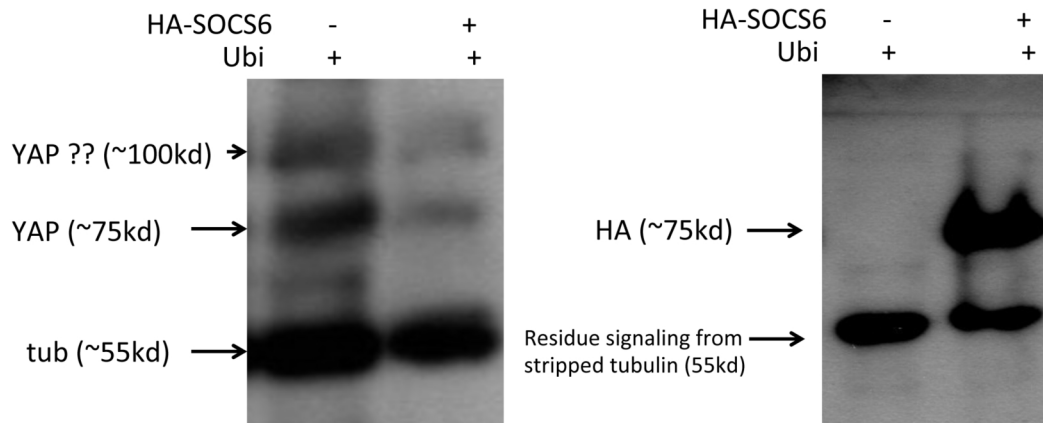
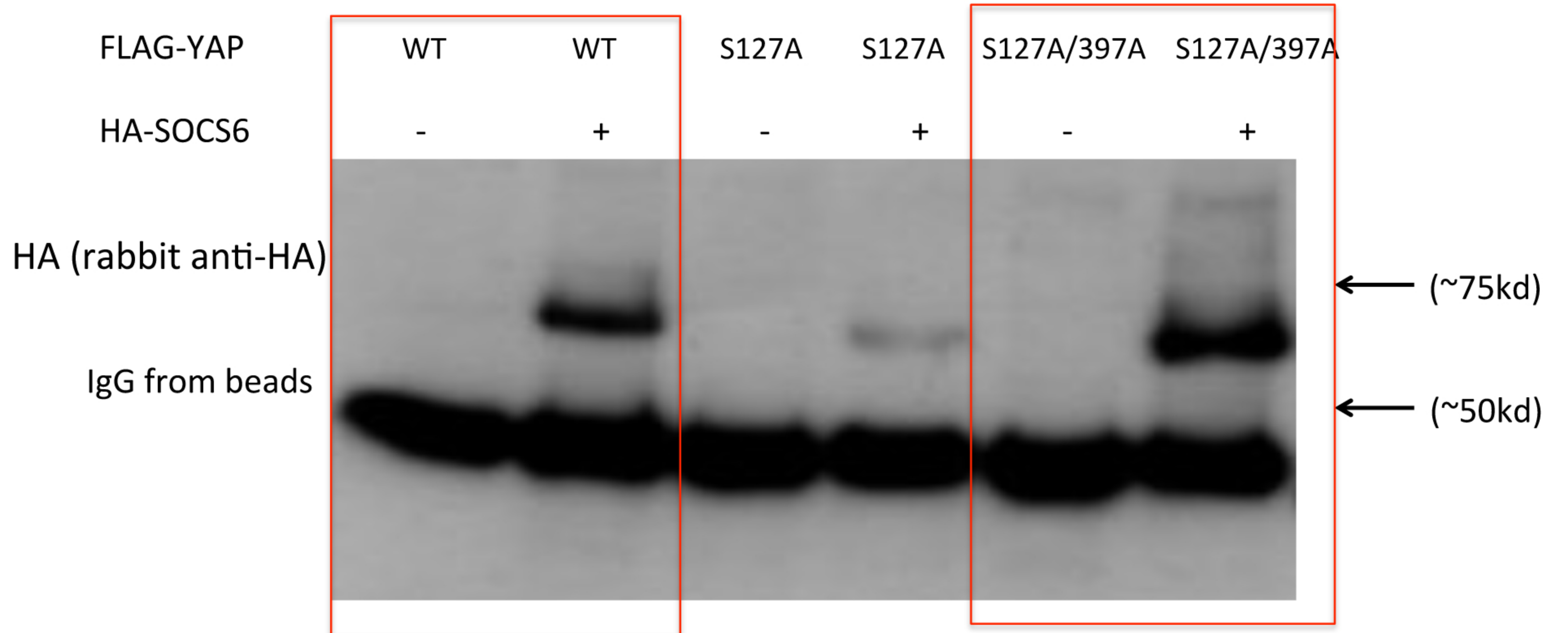


Fig 4D

FLAG IP (rabbit anti-FLAG), membrane probed with anti-HA (rabbit)



FLAG IP : Membrane probed with anti-FLAG (rabbit)

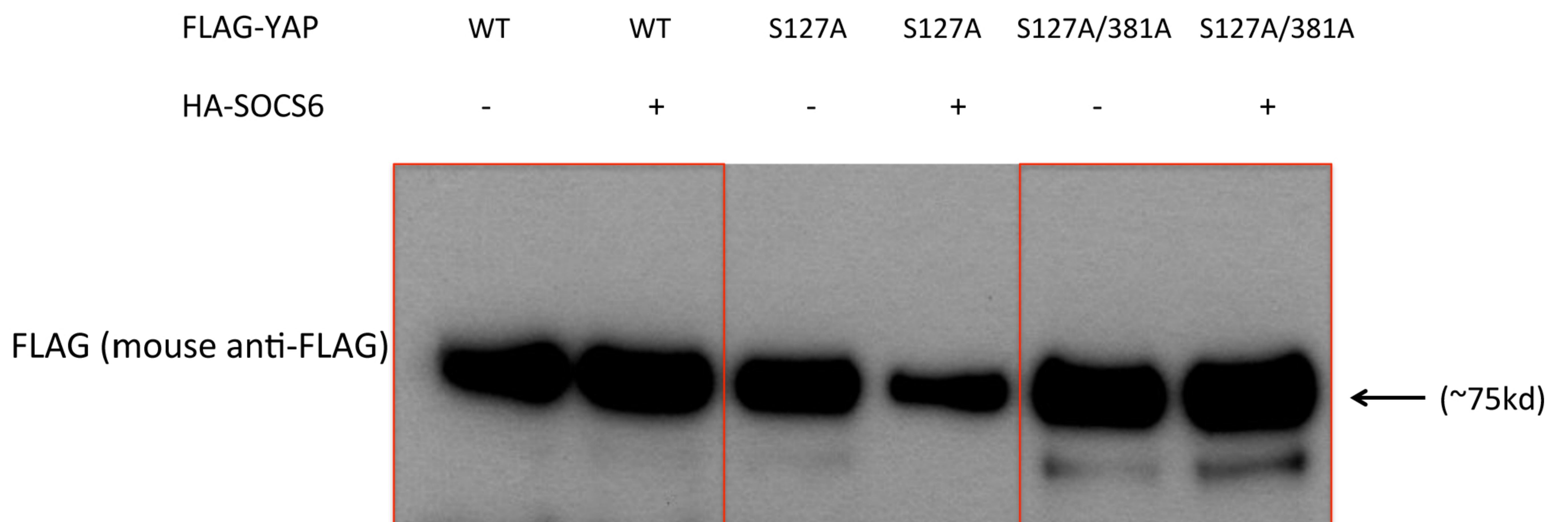


Fig 4D

Inputs (independent membranes)

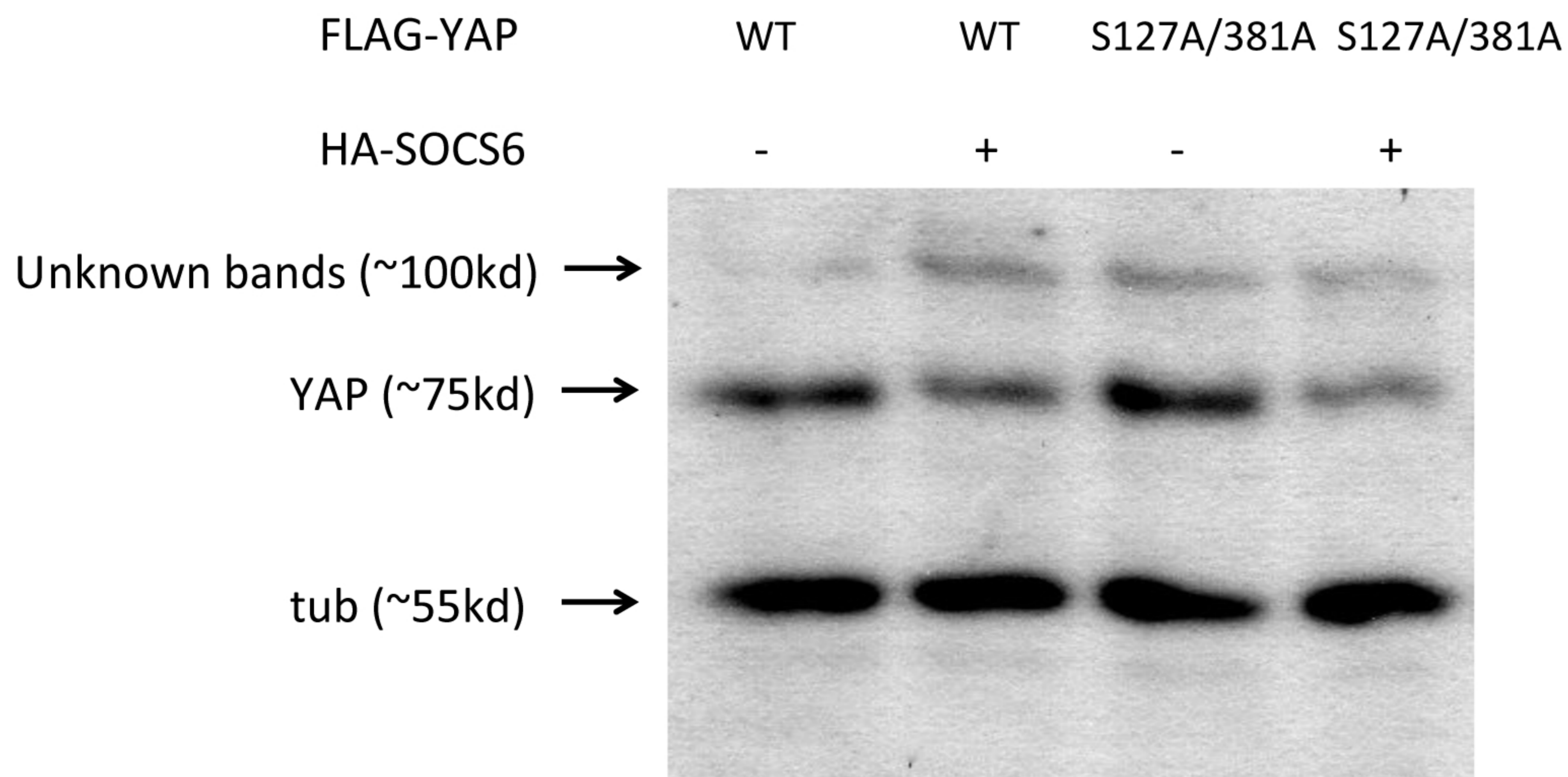


Fig 4E

Antibody used :

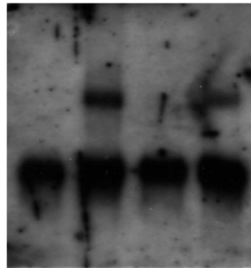
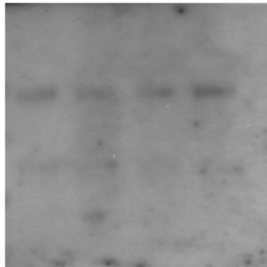
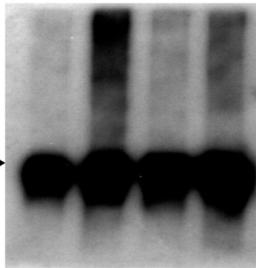
1. Rabbit anti-c-myc tag
2. Rabbit anti-SOCS6

First probed for c-myc-ubi

then stripped and probed with FLAG

After another stripping ,
probed for SOCS6 (20 min exposure)

IgG →
From beads



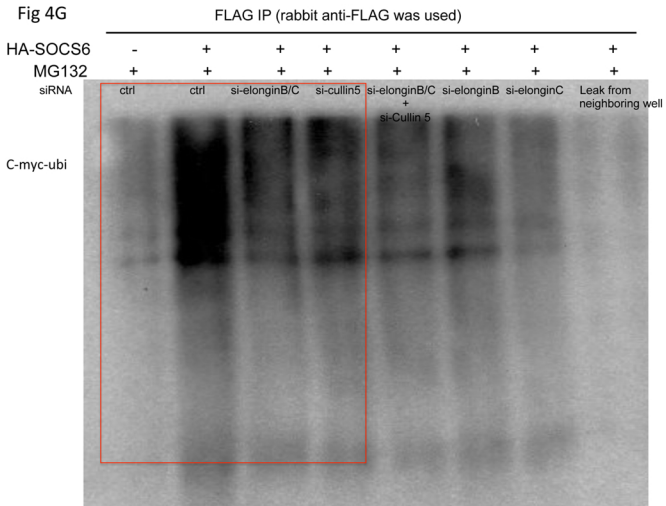


Fig 4G Antibody used after stripping : mouse anti-FLAG, in this exp, beads were removed from supernatant by centrifugation

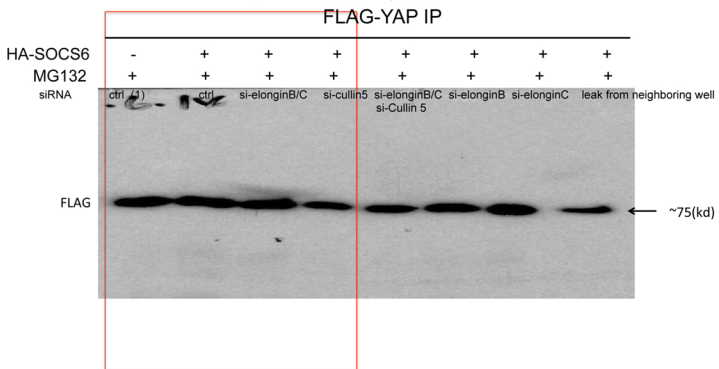


Fig 4G Antibody used after stripping: rabbit anti-SOCS6, in this exp, beads were removed from supernatant by centrifugation

