

Supplementary Figure 1

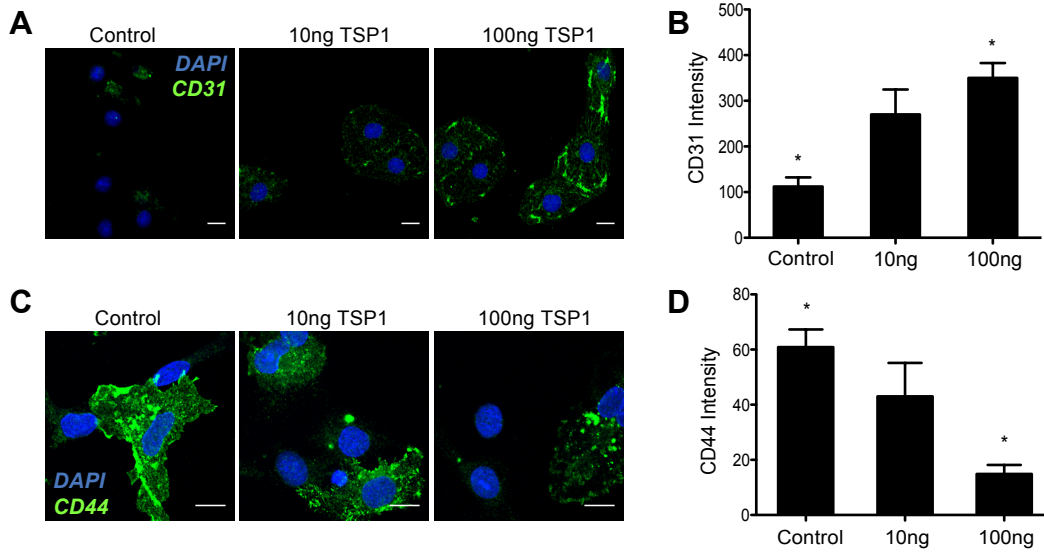


Figure S1. The effect of TSP1 on LSEC markers. LSECs were treated with 10ng or 100ng TSP1 overnight (scale bar, 10 μ m). (A) Representative images of CD31 immuno-fluorescence (green) with increasing doses of TSP1. (B) Quantification of CD31 fluorescence intensity. There is significant increase in CD31 expression after TSP1 treatment. (C) Representative images of CD44 immuno-fluorescence (green) with increasing doses of TSP1. (D) Quantification of CD44 fluorescence intensity. There is significant decrease in CD44 expression after TSP1 treatment. (* represents p-value < 0.05, n=3).