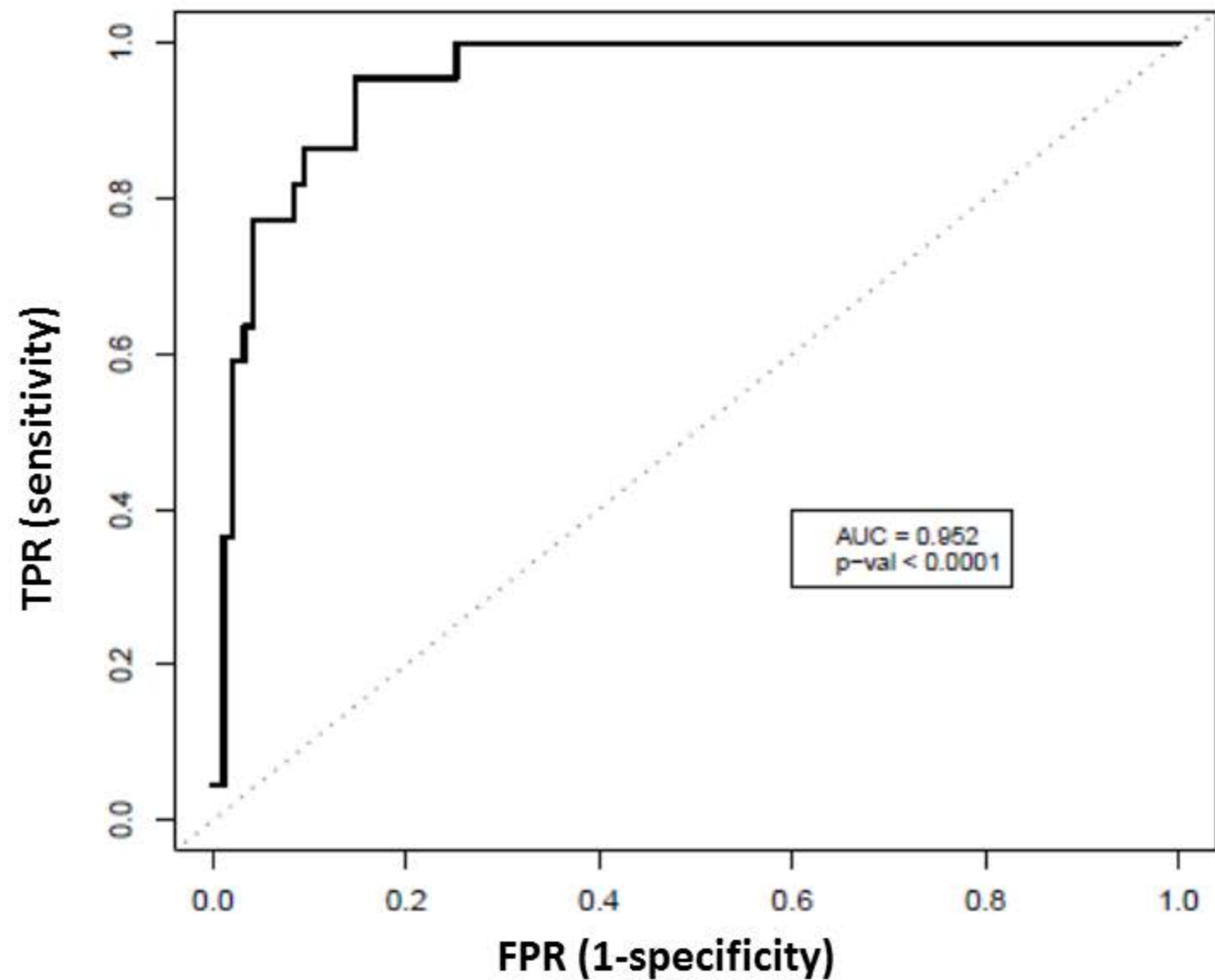


**Online figure 1: Diagnostic accuracy of age and body-mass-index adjusted 2D-MRE for advanced fibrosis**



**Online Table 1: Baseline characteristics stratified by availability of the magnetic resonance elastography reading versus no availability of magnetic resonance elastography reading paired with a biopsy.**

	Patients who underwent MRE n=117	Patients who did not undergo MRE n=47	P values
<b>Demographics</b>			
Male patients %	51 (43.6%)	19 (40.4%)	0.711
Age (years)	50.1 (13.4)	51.6 (13.3)	0.507
Weight (kg) mean (SD)	91.8 (18.4)	89.0 (22.4)	0.407
Height (cm) mean (SD)	1.68 (0.11)	1.67 (0.10)	0.566
BMI (kg/m <sup>2</sup> ) mean (SD)	32.4 (5.0)	31.7 (6.2)	0.445
Ethnic origin:			
White %	61 (52.1%)	23 (49.0%)	0.711
Black %	1 (0.9%)	0 (0.0%)	
Asian %	20 (17.1%)	12 (25.5%)	
Hispanic %	32 (27.4%)	12 (25.5%)	
Multi-racial %	1 (0.9%)	0 (0.0%)	
Other %	1 (0.9%)	0 (0.0%)	
Refused %	1 (0.9%)	0 (0.0%)	
Diabetes	40 (34.19%)	14 (29.8%)	0.588
<b>Biochemical Profile</b>			
ALT U/L mean (SD)	66.3 (54.4)	57.1 (47.9)	0.309
AST U/L mean (SD)	45.4 (31.3)	40.0 (27.4)	0.308
AST/ALT ration mean (SD)	0.77 (0.30)	0.81 (0.28)	0.410
Alk Phos U/L mean (SD)	74.7 (23.4)	82.4 (27.8)	0.075
GGT U/L mean (SD)	59.3 (47.6)	59.0 (47.6)	0.973
Total Bilirubin mg/dL mean (SD)	0.5 (0.4)	0.5 (0.2)	0.272
Direct Bilirubin mg/dL mean (SD)	0.1 (0.08)	0.1 (0.04)	0.527
Albumin g/dL mean (SD)	4.5 (0.3)	4.5 (0.3)	0.717
Glucose mg/dL mean (SD)	107.1 (30.3)	112.9 (39.2)	0.311
Hgb A1C mean (SD)	6.1 (0.9)	6.2 (0.9)	0.741
Triglycerides mg/dL mean (SD)	166.9 (98.7)	155.7 (76.6)	0.485
Total Cholesterol mg/dL mean (SD)	186.0 (39.4)	188.9 (42.2)	0.678
LDL mg/dL mean (SD)	106.2 (34.2)	111.1 (36.8)	0.425
HDL mg/dL mean (SD)	48.4 (16.6)	48.5 (12.8)	0.428
Prottime mean (SD)	10.8 (1.0)	10.8 (0.9)	0.907
<b>Histology</b>			
Steatosis			0.161
1	41 (35.0%)	22 (46.8%)	

2	43 (36.8%)	17 (36.2%)	
3	33 (28.2%)	8 (17.0%)	
Lobular Inflammation			<b>0.367</b>
0	2 (1.7%)	0 (0.0%)	
1	46 (39.3%)	29 (61.7%)	
2	64 (54.7%)	15 (31.9%)	
3	5 (4.3%)	3 (6.4%)	
Ballooning			<b>0.0001</b>
0	16 (13.7%)	20 (42.5%)	
1	77 (65.8%)	21 (44.7%)	
2	24 (20.5%)	6 (12.8%)	
Fibrosis			<b>0.09</b>
0	43 (36.8%)	24 (51.1%)	
1	39 (33.3%)	8 (17.0%)	
2	13 (11.1%)	4 (8.5%)	
3	12 (10.3%)	7 (14.9%)	
4	10 (8.5%)	4 (8.5%)	
NASH			<b>0.0001</b>
NAFLD	11 (9.4%)	21 (44.7%)	
Borderline NASH	15 (12.8%)	9 (19.1%)	
Definite NASH	91 (77.8%)	17 (36.2%)	
NAS mean (SD)	4.62 (1.36)	3.85 (1.43)	<b>0.001</b>