

Figure 1S. Protein identification by tandem mass spectrometry. MS full scan, MS/MS scan and amino acid sequence of (A) Dpysl2, (B) Nsf, (C) Dpysl3 and (D) Sept11. Each MS/MS spectrum shows the predicted peptide sequence and the identified tryptic fragment.

Figure 1S A

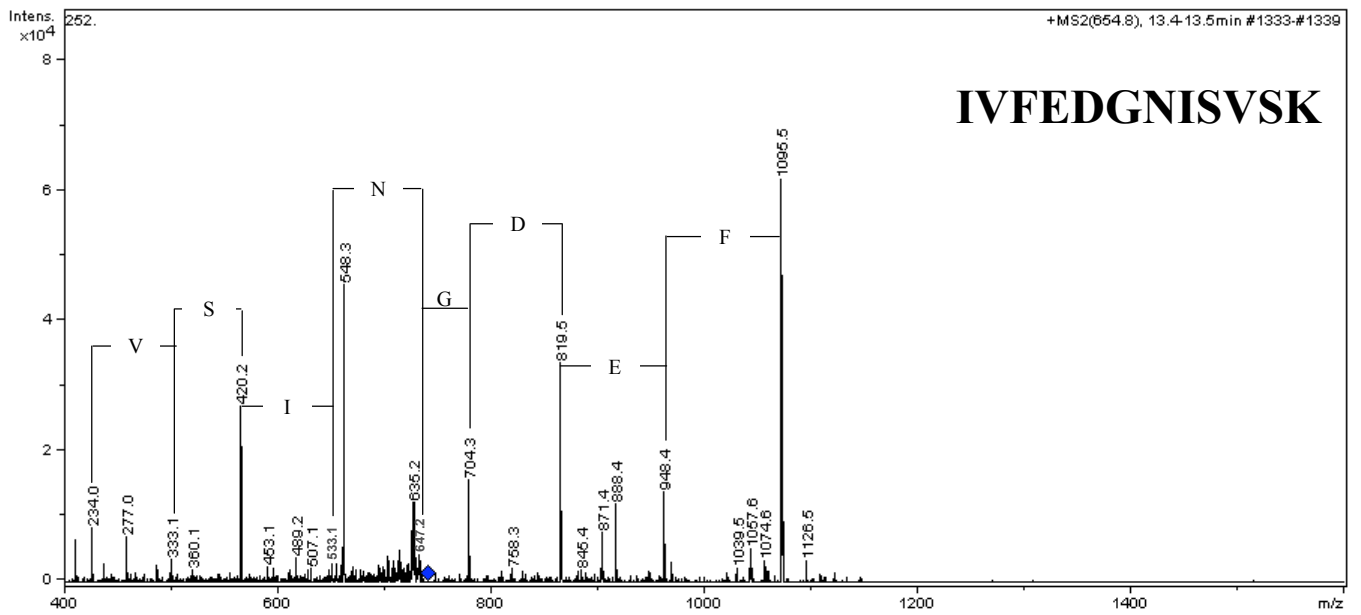
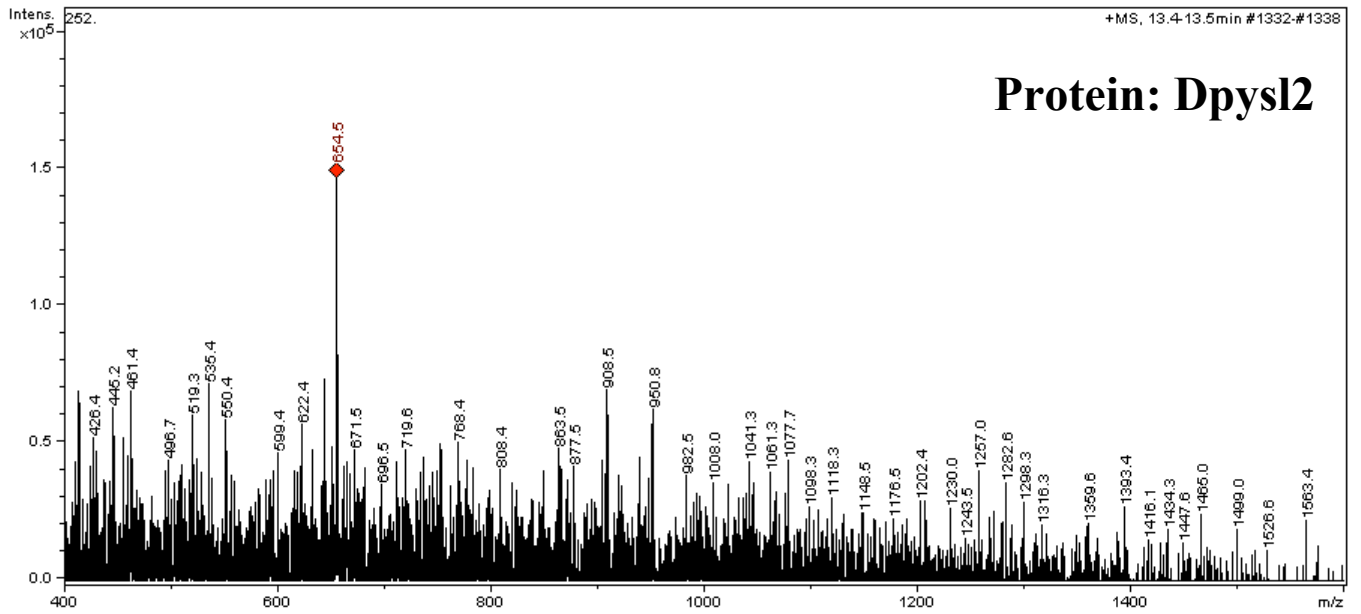


Figure 1S B

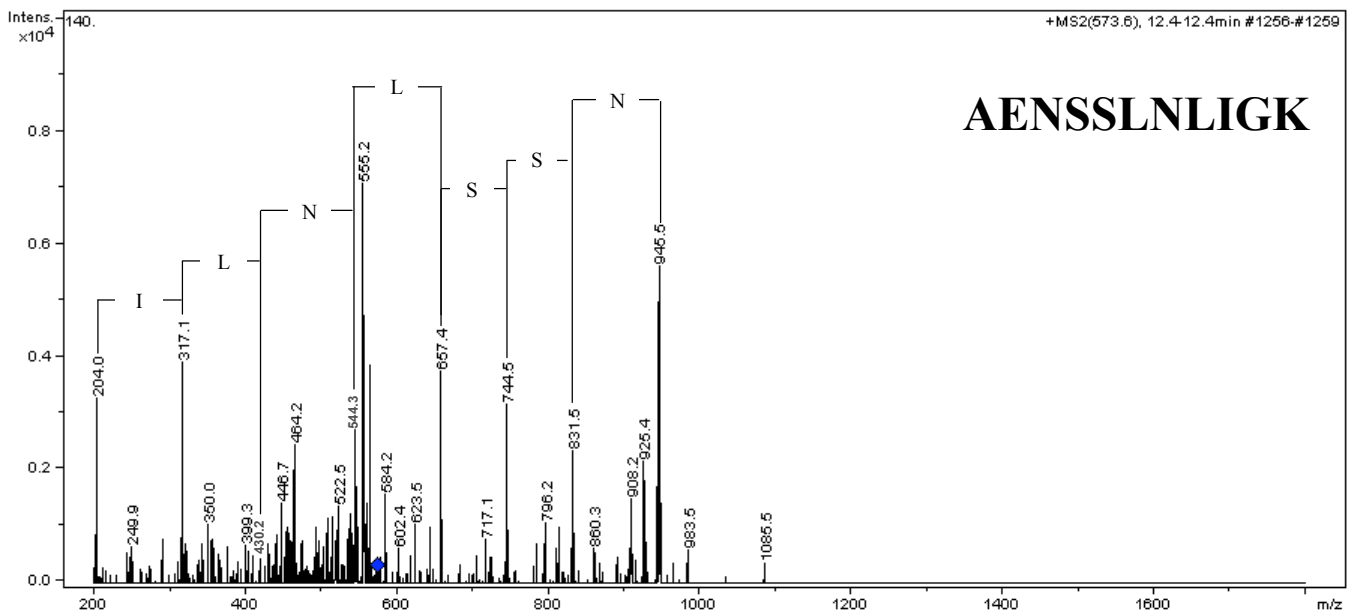
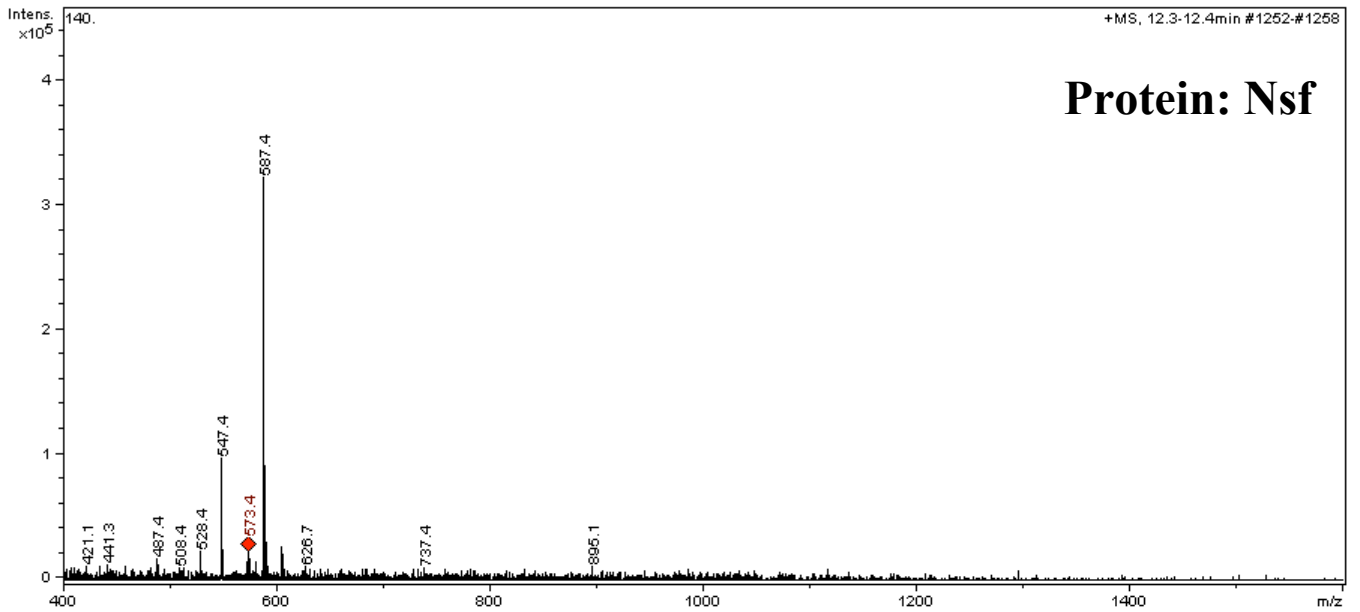


Figure 1S C

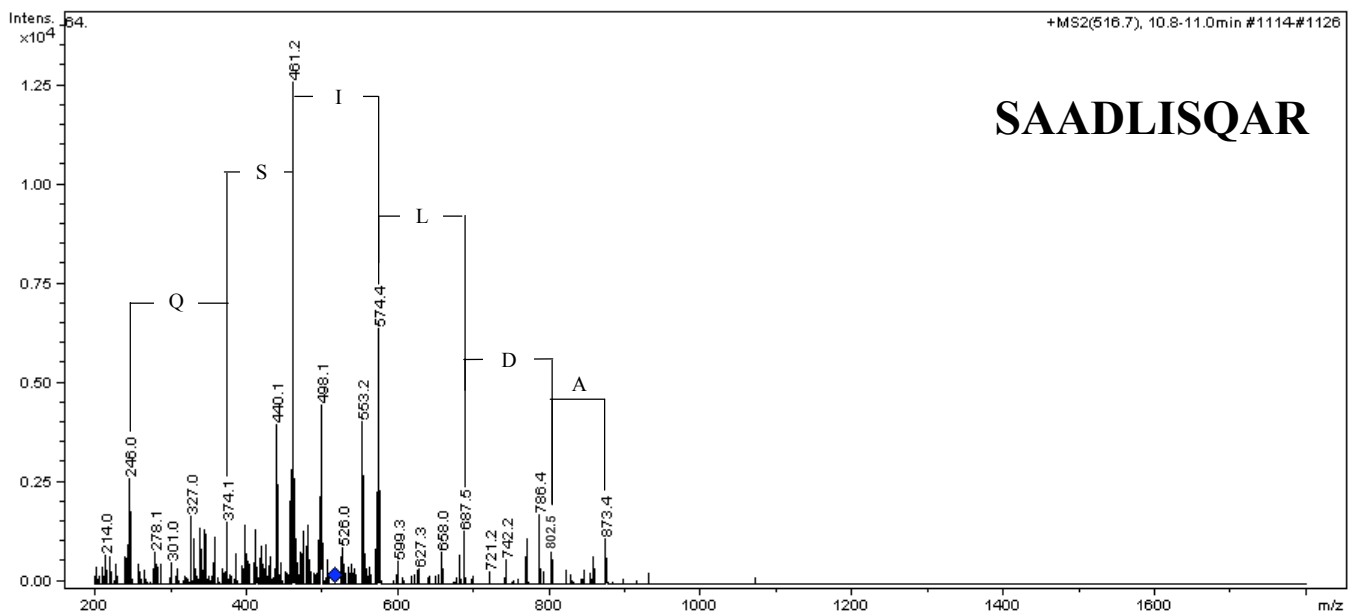
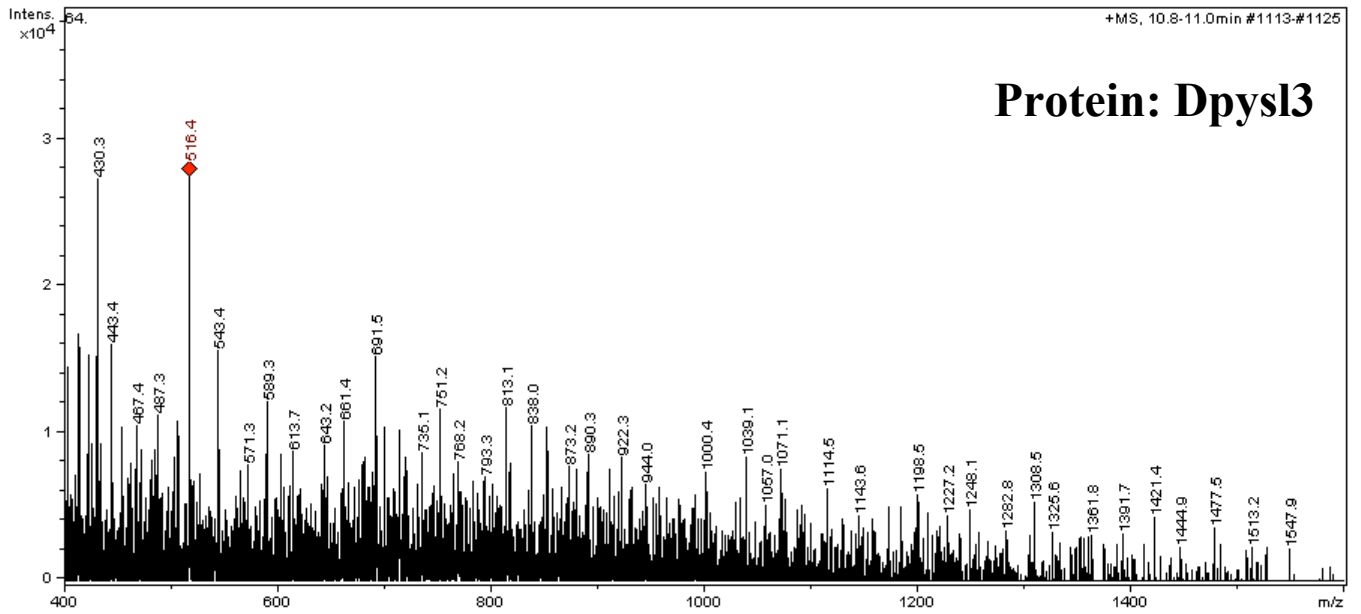


Figure 1S D

