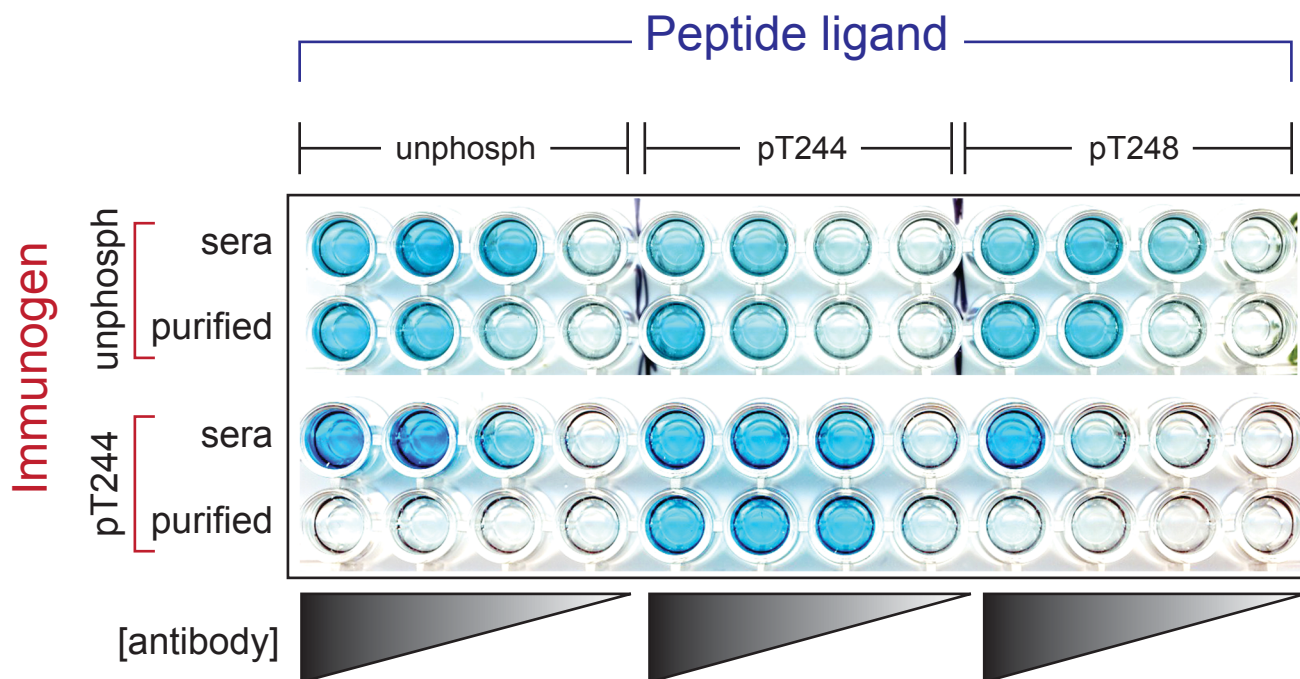


Supplementary Figure S2



Supplementary Figure S2. Characterization of phospho-specific T244 antibodies. ELISA assay. Wells were coated with either an unphosphorylated MYC peptide (LHEETPPTTSS), a peptide phosphorylated at T244 (pT244), or a control peptide phosphorylated at T248 (pT248). Either total sera, or affinity-purified antibodies, were assayed as indicated. Antibody reactivity to each peptide was scored via an HRP-conjugated secondary antibody. See Supplementary Methods for more details.