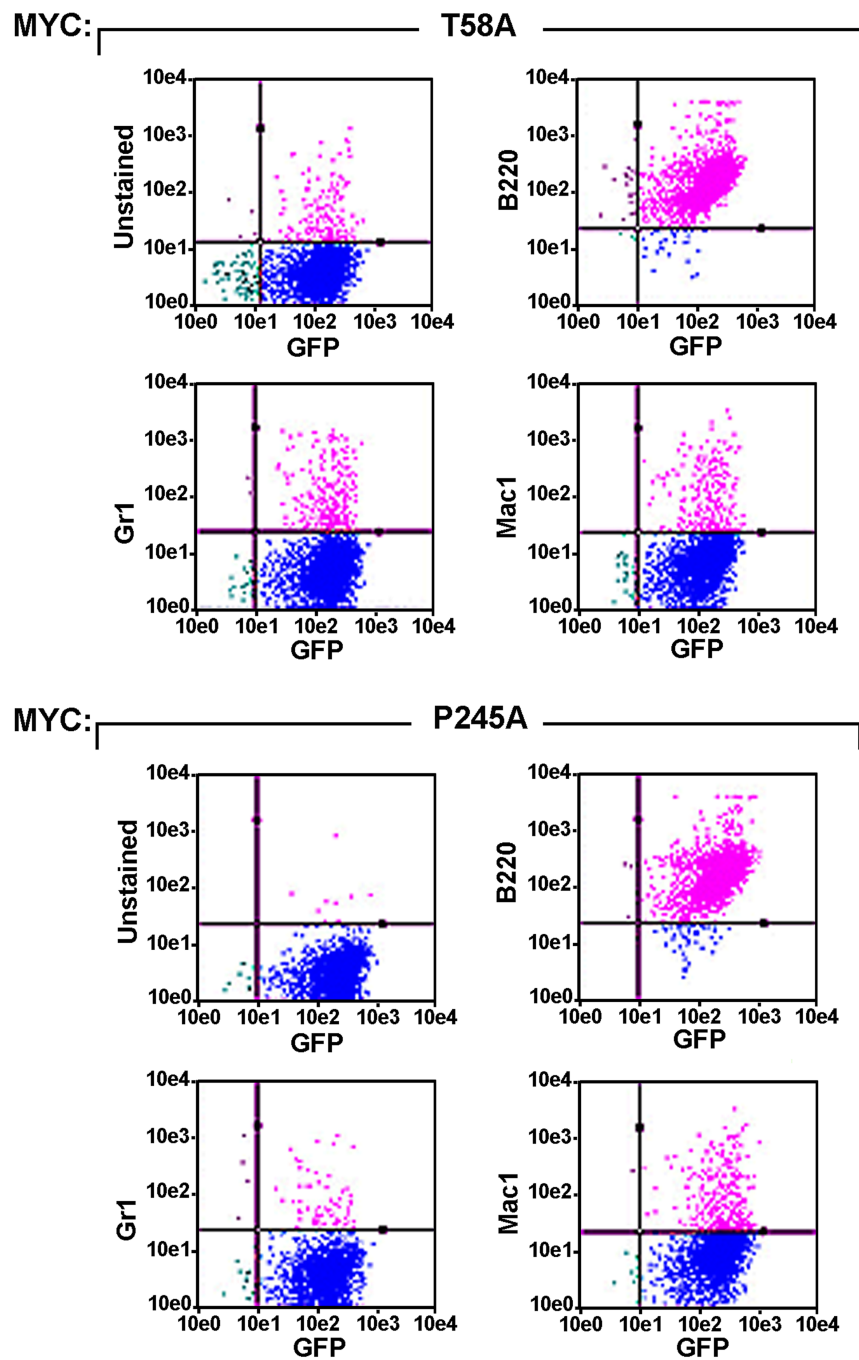


Supplementary Figure S4



Supplementary Figure S4. Immunophenotyping of lymphomas derived from expression of T58A or P245A MYC in wild-type p53 hematopoietic stem cells. GFP-positive cells recovered from tumor-bearing lymph nodes derived from T58A (top) or P245A MYC (bottom) in wild-type p53 recipient HSCs were analyzed by Flow cytometry (Guava platform) for co-expression of B220 (pre B-cell marker), or myeloid markers Gr-1 and Mac1. See Supplementary Methods for more details.