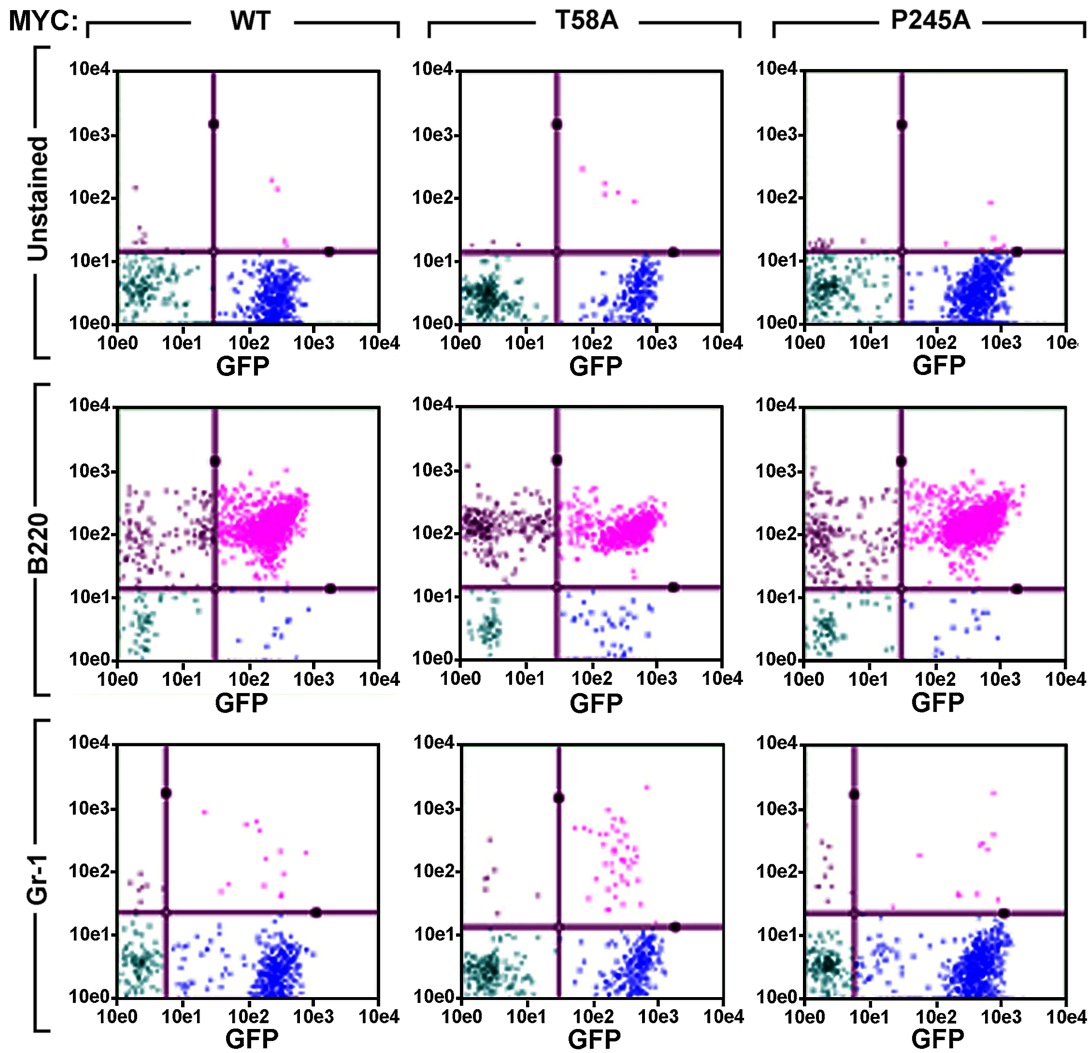


## Supplementary Figure S5



**Supplementary Figure S5.** Immunophenotyping of lymphomas derived from expression of WT, T58A, or P245A MYC in p53(+/-) hematopoietic stem cells. GFP-positive cells recovered from tumor-bearing lymph nodes derived from WT, T58A, or P245A MYC (bottom) in p53(+/-) recipient HSCs were analyzed by Flow cytometry (Guava platform) for co-expression of B220 or Gr-1. See Supplementary Methods for more details.