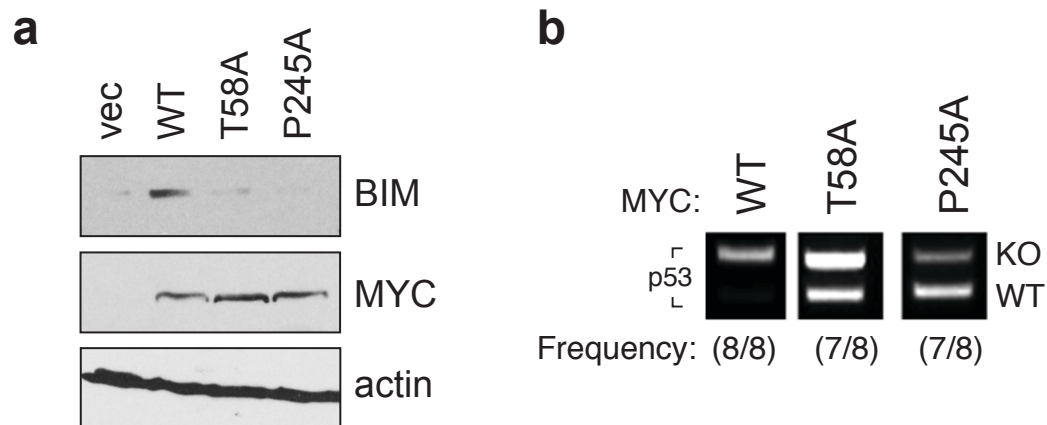


Supplementary Figure S6



Supplementary Figure S6. The P245A mutant mirrors T58A in the failure to induce Bim and to select for loss of p53. **(a)** Western blot analysis of Bim expression in early passage MEFs expressing either vector control (vec) or different versions of MYC. **(b)** PCR analysis of either p53-WT (WT) or p53-null (KO) alleles in tumors derived from p53^{+/-} HSCs expressing the indicated MYC isoforms. Frequency indicates the observed incidence of the phenotype shown. See Supplementary Methods for more details.