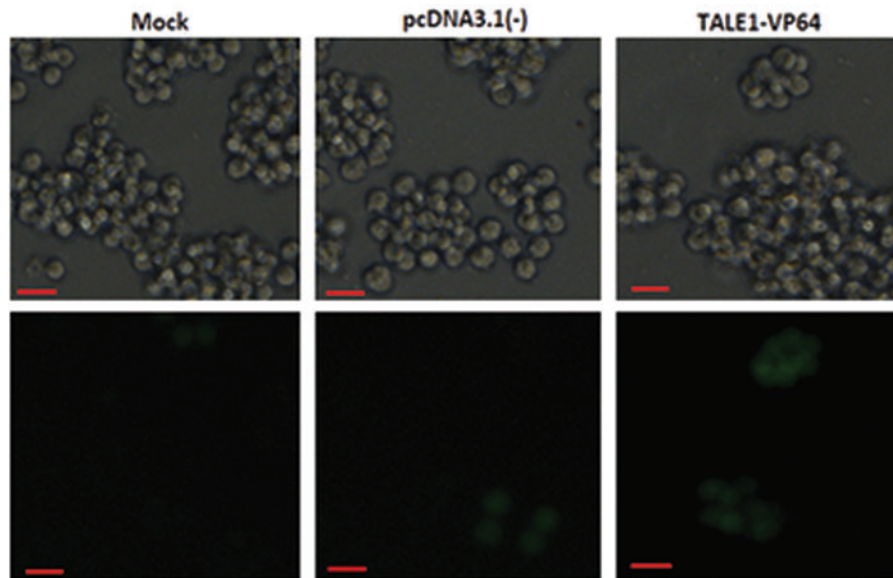


## Supplementary Data



**SUPPLEMENTARY FIG. S2.** Visualization of GFP expression in A10.6 cells after transfection with TALE1-VP64. A10.6 cells were untransfected (mock) or transfected with pcDNA3.1(-) ( $2 \mu\text{g}$ ) or TALE1-VP64 ( $2 \mu\text{g}$ ). Then, 48 h post-treatment, cells were viewed using a Nikon fluorescent microscope and microscope samples were photographed using a Nikon E2 digital camera. Scale bar,  $100 \mu\text{m}$ .