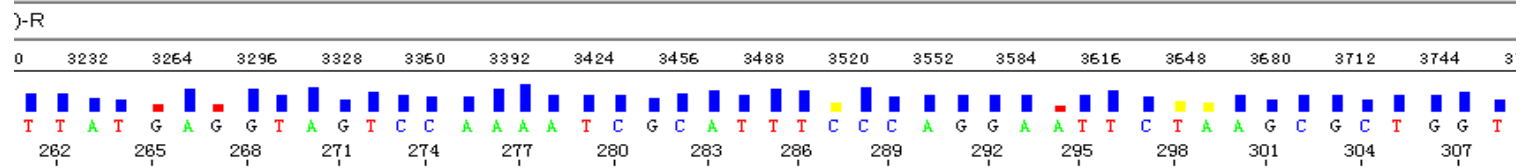


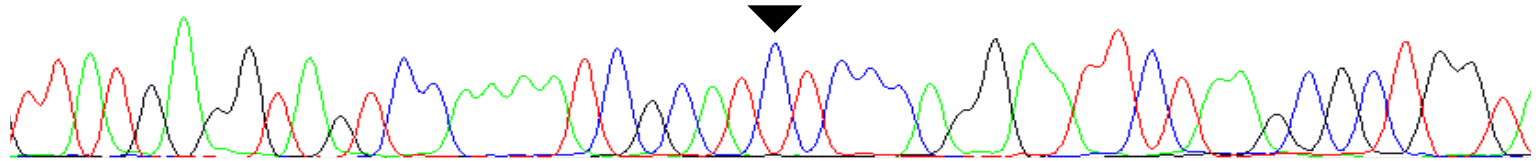
Supplementary Figure 1

DICER1 somatic hotspot mutation c.5125 G>A (p.D1709N) is in trans with germline mutant allele as shown by amplification with discriminating primers

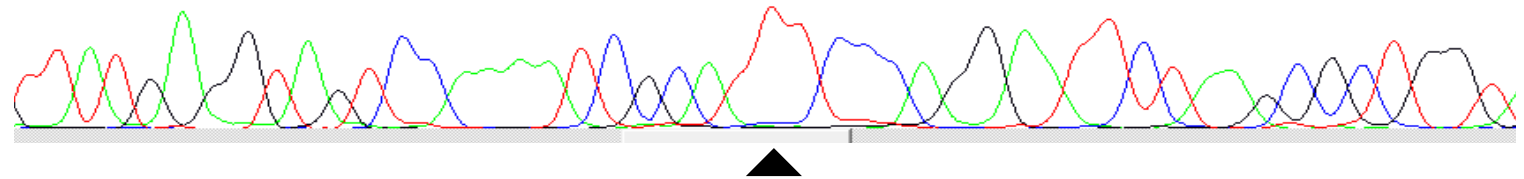
Reference
sequence



Blood DNA



Tumor DNA



Position of germline
loss-of-function variant

DNA sequence of DICER1 exon 23 from blood and tumor specimens using discriminating primers across germline mutant sequence (c.4407_4410delTTCT). Tumor DNA shows c.5125G>A (p.D1709N) in wild-type allele (germline mutant-negative allele).