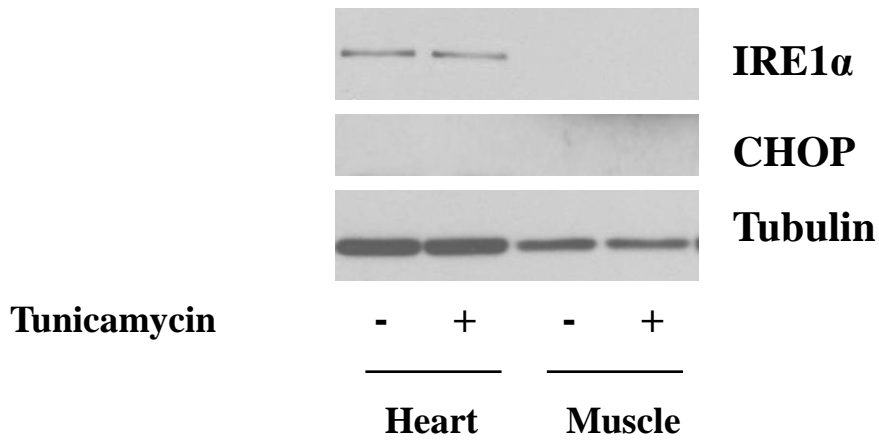


Supplementary Figure 8



Supplementary Figure 8: Male Balb/c mice were injected with either control buffer or tunicamycin. After 24 h, the gastrocnemius and heart were dissected and homogenized. Equal amounts of protein were resolved by SDS-PAGE and immunoblotted using antibodies recognizing IRE1 α , CHOP or alpha/beta tubulin. Proteins were visualized using enhanced chemiluminescence.