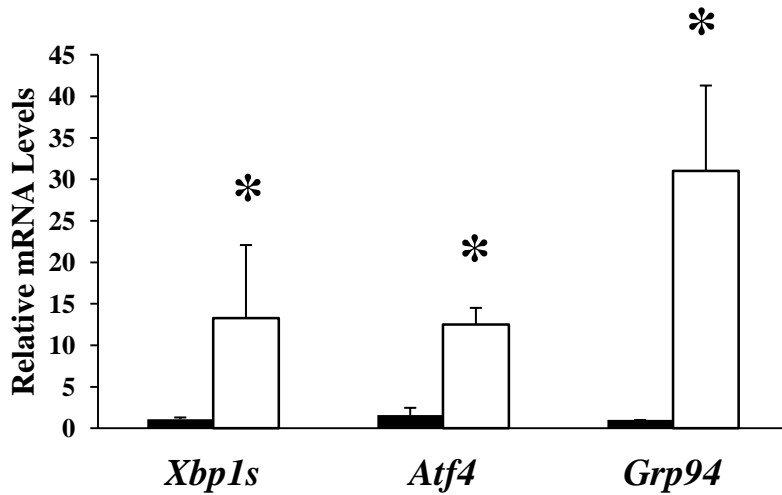
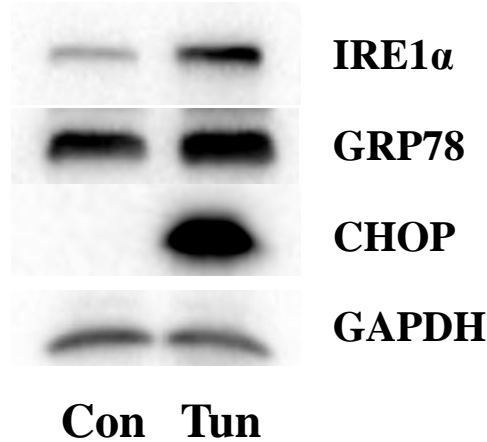


# Supplementary Figure 9

**A**



**B**



**Supplementary Figure 9:** Tunicamycin induces ER stress in primary mouse hepatocytes. Primary hepatocytes were isolated from male Balb/c mice and incubated for 20 h at 37°C in DMEM either in the absence (Con) or presence of tunicamycin (5 $\mu$ g/ml) (Tun). (A) Total RNA was extracted from cells, transcribed to cDNA followed by real-time PCR to quantify the changes in mRNA levels of the indicated genes. The value of each gene in control cells was assigned a value of 1. All other values are expressed relative to the control. ■ Control, □ Tunicamycin. \* Indicates statistical significance  $p < 0.05$ . (B) Cells were lysed and equal amounts of protein were resolved by SDS-PAGE followed by Western blotting using antibodies recognizing the indicated proteins. Proteins were visualized using the BioRad ChemiDoc MP Imaging System.