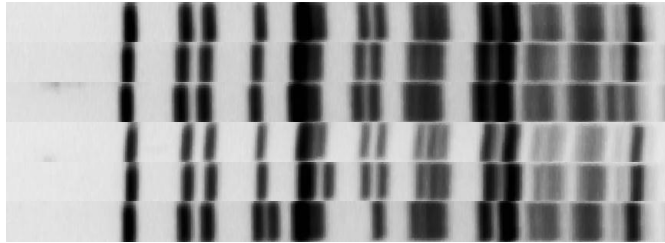
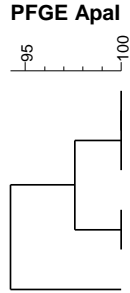


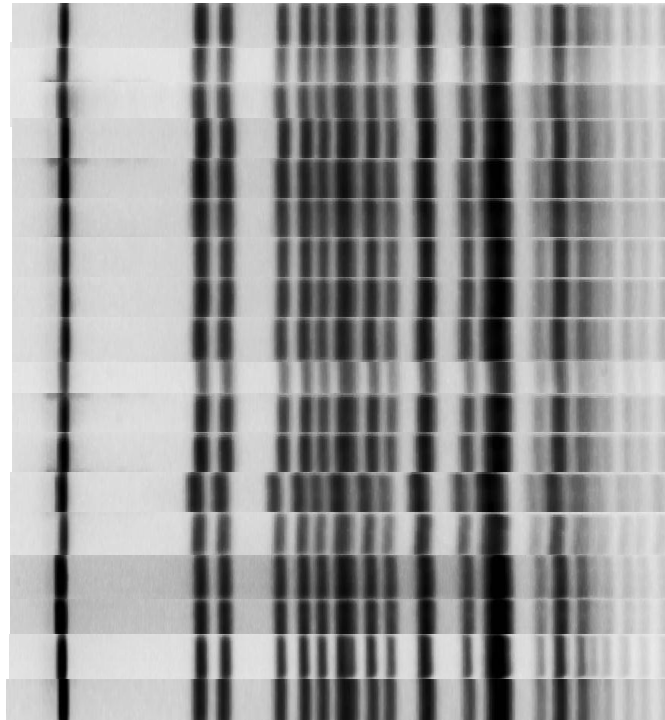
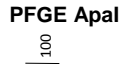
Figure S1. PFGE analysis of isolates from Patients 1 and 2 throughout the hospital stay.

Isolates from Burn Patient 1 – PFGE Type 50



Phoenix ID	Source	Hospital day	Day of colistin treatment	Colistin MIC* (µg/mL)
<i>Acinetobacter</i>	BAL	36	21	1.0
<i>Acinetobacter</i>	BAL	30	15	0.75
<i>Acinetobacter</i>	sputum	70	Post	1.0
<i>Acinetobacter</i>	tracheal aspirate	12**	Pre	0.75
<i>Acinetobacter</i>	BAL	30	15	0.75
<i>Acinetobacter</i>	BAL	36	21	1.0

Isolates from Burn Patient 2 – PFGE Type 49



Phoenix ID	Source	Hospital day	Day of colistin treatment	Colistin MIC* (µg/mL)
<i>Acinetobacter</i>	groin	1	Pre	0.5
<i>Acinetobacter</i>	wound (superficial)	2	Pre	0.5
<i>Acinetobacter</i>	wound (superficial)	2	Pre	0.75
<i>Acinetobacter</i>	tracheal aspirate	2	Pre	0.75
<i>Acinetobacter</i>	wound (deep)	2**	Pre	0.75
<i>Acinetobacter</i>	wound (superficial)	5	1	0.75
<i>Acinetobacter</i>	BAL	5	1	0.5
<i>Acinetobacter</i>	wound (deep)	10	6	0.5
<i>Acinetobacter</i>	wound (deep)	10	6	0.75
<i>Acinetobacter</i>	wound (superficial)	11	7	0.75
<i>Acinetobacter</i>	wound (superficial)	11	7	0.75
<i>Acinetobacter</i>	wound (superficial)	12	8	1.0
<i>Acinetobacter</i>	urine	24	Post	1.5
<i>Acinetobacter</i>	synovial fluid	26	Post	0.75
<i>Acinetobacter</i>	tracheal aspirate	38	Post	0.75
<i>Acinetobacter</i>	BAL	47	Post	24
<i>Acinetobacter</i>	BAL	52	Post	1.0
<i>Acinetobacter</i>	rectal swab	101	Post	>256

* E-Test™, Bio-Merieux

** First infecting isolate