

Fraction GFP-Prm3 at SPB vs. Total Cellular GFP-Prm3

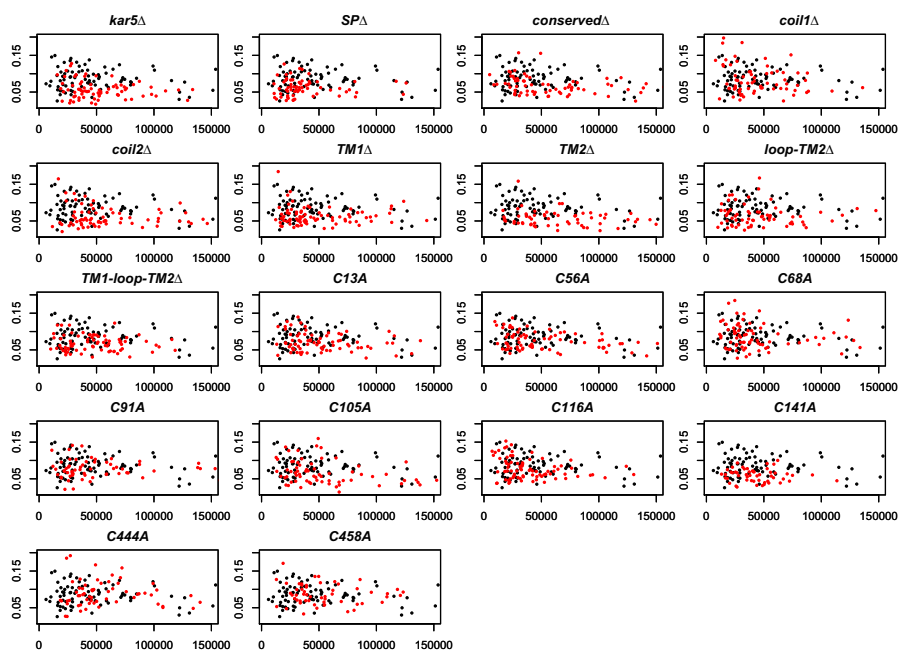


Figure S1 Quantitative comparisons of GFP-Prm3 enrichment in *kar5* mutants. Each panel shows fraction GFP-Prm3 at the SPB (y-axis) vs. total cellular GFP (x-axis). Each point is a cell; black points are *KAR5*⁺ (constant in each panel), and red points are the *kar5* mutant listed in the title for each panel. Data is identical to that summarized in Figure 2B. A few points lying beyond the axes are not shown for clarity.